

Converting Colors

XYZ(8.2612, 8.2487, 6.7080)

Have a look what the booklet for
XYZ(8.2612, 8.2487, 6.7080)
contains.

XYZ(8.2838, 8.2969, 6.7951)	3
<i>Conversions</i>	4
<i>Details</i>	6
<i>Harmonies</i>	12
<i>Previews</i>	24
<i>Color Blindness Simulation</i>	27
<i>CSS Examples</i>	30

Color

XYZ(8.2838, 8.2969, 6.7951)

Conversions

Conversions Part 1

Format	Color
Hex	5C4F45
RGB	92, 79, 69
RGB Percent	36%, 31%, 27%
CMY	0.6392, 0.6902, 0.7294
CMYK	0.00, 0.14, 0.25, 0.64
HSL	26°, 14%, 32%
HSV	26°, 25%, 36%
XYZ	8.2838, 8.2969, 6.7951
YIQ	81.7470, 10.9580, -0.3540

Conversions

Conversions Part 2

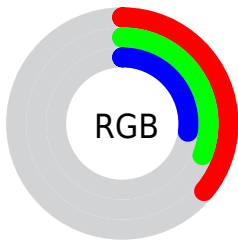
Format	Color
R_YB	92, 87, 69
Decimal	6049605
CIE Lab	34.59, 3.61, 7.90
CIE LCh	35, 8.684, 65.457
Yxy	8.2969, 0.3544, 0.3549
Android (android.graphics.Color)	4284239685 (0xFF5C4F45)
YUV	81.7470, -6.2843, 8.9919
Hunter-Lab	28.8043, 0.9270, 6.1762

Details

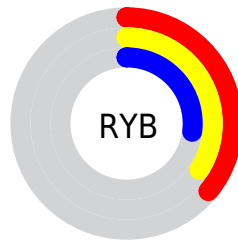
The XYZ color **8.2838, 8.2969, 6.7951** is a dark color, and the websafe version is hex **666666**. A complement of this color would be **7.4033, 8.0724, 11.2933**, and the grayscale version is **7.9802, 8.3958, 9.1430**.

A 20% lighter version of the original color is **22.2577, 22.5623, 20.0115**, and **1.9142, 1.8575, 1.2349** is the 20% darker color. If you saturate the color by 10%, you get **7.6597, 7.4707, 5.2857**, and if you desaturate by 10%, it is **8.9820, 9.2003, 8.5480**.

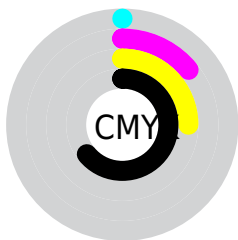
Distribution



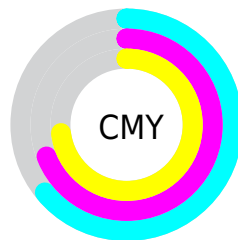
- Red (36%)
- Green (31%)
- Blue (27%)



- Red (36%)
- Yellow (34%)
- Blue (27%)



- Cyan (0%)
- Magenta (14%)
- Yellow (25%)
- Black (64%)



- Cyan (64%)
- Magenta (69%)
- Yellow (73%)

Brightness & Saturation Gradients

These gradients show how the XYZ color 8.2838, 8.2969, 6.7951 changes by changing the brightness by 10 percent. The first figure shows a shift by +10% for each color and the second figure -10%.

Similar to the brightness gradients but the following saturation gradients show a change of the XYZ color 8.2838, 8.2969, 6.7951 by changing the saturation by 10% instead.

■ 8.2838, 8.2969,
6.7951

■ 8.2838, 8.2969,
6.7951

172.2641,
178.0425, 175.5159

■ 4.3304, 4.2855,
3.2578

■ 22.1931, 22.5385,
20.0656

■ 1.8907, 1.8345,
1.2277

■ 32.8797, 33.5374,
30.6359

■ 0.5714, 0.5086,
0.0014

■ 46.5414, 47.6344,
44.3876

■ 0.0000, 0.0000,
0.0000

■ 63.5436, 65.2137,
61.7392

■ 84.2516, 86.6597,
83.1093

109.0308,

112.3570, 108.9164

138.2465,
142.6898, 139.5791

■ 8.2838, 8.2969,
6.7951

■ 8.2838, 8.2969,
6.7951

■ 7.6597, 7.4707,
5.2857

■ 8.9820, 9.2003,
8.5480

■ 7.1062, 6.7184,
4.0082

■ 9.7563, 10.1817,
10.5540

■ 6.6209, 6.0381,
2.9512

■ 10.6091, 11.2436,
12.8230

■ 6.2005, 5.4274,
2.1016

■ 11.5429, 12.3878,
15.3642

■ 5.8417, 4.8838,
1.4454

■ 12.5598, 13.6162,
18.1862

■ 5.5406, 4.4045,
0.9665

■ 13.6620, 14.9305,
21.2974

■ 5.2885, 3.9846,
0.6225

■ 14.8514, 16.3325,
24.7056

■ 5.1727, 3.7933,
0.4595

■ 16.1301, 17.8237,
28.4187

■ 17.4999, 19.4058,
32.4439

Harmonies

Analogous

The Analogous color harmony consists of three colors that are next to each other on the color wheel.



8.6785, 8.2969, 7.5574



8.2838, 8.2969, 6.7951



7.7967, 8.2969, 6.6054

Triad

The Triadic color harmony groups three colors that are evenly spaced from another and form a triangle on the color wheel.



8.2838, 8.2969, 6.7951



6.9848, 8.2969, 9.2929



8.4452, 8.2969, 11.4148

Complementary

The Complementary color scheme is a pair of colors which are on the opposite of each other on the color wheel.



8.2838, 8.2969, 6.7951



7.4033, 8.0724, 11.2933

Split Complementary

Split-complementary colors differ from the complementary color scheme. The scheme consists of three colors, the original color and two neighbors of the complement color.



7.9759, 8.2969, 11.9948



8.2838, 8.2969, 6.7951



7.1432, 8.2969, 10.6912

Square

The Square scheme is like the rectangle color scheme, but the four colors are evenly spaced on the color wheel.



8.2838, 8.2969, 6.7951



7.0596, 8.2969, 7.9589



7.5011, 8.2969, 11.7173



8.7744, 8.2969, 10.2017

Rectangle

The Rectangle color scheme consists of four colors that form a rectangle on the color wheel.



8.2838, 8.2969, 6.7951



7.4879, 8.2969, 6.8101



7.5011, 8.2969, 11.7173



8.2979, 8.2969, 11.6957

Sweetspot

The Sweet Spot groups the original color and five complimentary colors.



8.2840, 8.2973, 6.7953



16.7627, 17.4265, 17.6524



8.0661, 7.1414, 8.9427



4.1931, 4.3569, 4.4005



48.1978, 50.7079, 55.2208



4.4639, 4.6964, 5.1144

Same Dimension

The Same Dimension uses a secret algorithm to generate beautiful new colors.



8.2840, 8.2973, 6.7953



13.8332, 13.6452, 10.2706



9.1836, 10.0964, 7.0951



2.4029, 2.4909, 2.4804



7.4309, 5.3804, 0.6469



39.8376, 27.7552, 3.2576

Inverse Universe

The Inverse Universe completely reimagines the original color for something new.



7.4033, 8.0724, 11.2933



11.9998, 13.1764, 19.6325



6.6098, 6.4854, 11.0288



2.3151, 2.4685, 2.9289



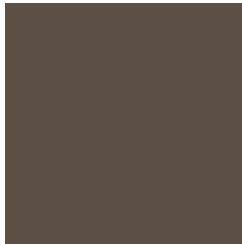
4.5164, 4.5601, 15.2943



23.8369, 23.1811, 83.4538

Previews

White Background



This preview shows how the XYZ color 8.2838, 8.2969, 6.7951 looks on a white background.

Color Contrast Check

Large Text (above 18pt) WCAG AA ✓ Pass

Any Text WCAG AA ✓ Pass

Large Text (above 18pt) WCAG AAA ✓ Pass

Any Text WCAG AAA ✓ Pass

Black Background



This preview shows how the XYZ color 8.2838, 8.2969, 6.7951 looks on a black background.

Color Contrast Check

Large Text (above 18pt) WCAG AA × Fail

Any Text WCAG AA × Fail

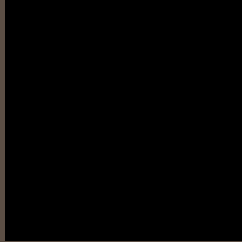
Large Text (above 18pt) WCAG AAA × Fail

Any Text WCAG AAA × Fail

If you want to check with other color combinations, try the [Color Contrast Checker](#).

XYZ 8.2838, 8.2969, 6.7951

Background



This preview shows how black text looks on a background with the XYZ color 8.2838, 8.2969, 6.7951.



This preview shows how white text looks on a background with the XYZ color 8.2838, 8.2969, 6.7951.

Color Blindness Simulation

Color vision deficiency is a very complex topic, and I could not describe the different causes any better than Wikipedia does, so if you want to learn more, you should check out their [article about color blindness](#).

Dichromacy



Original Color

8.2838, 8.2969, 6.7951

Protanopia

7.7942, 8.2584, 6.9776

Deuteranopia

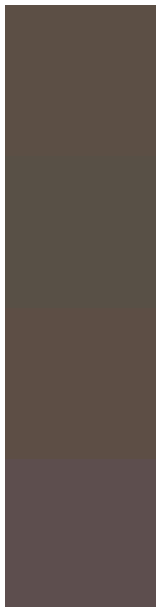
8.4147, 8.2581, 6.7807



Tritanopia

8.8313, 8.3120, 9.3225

Trichromacy



Original Color

8.2838, 8.2969, 6.7951

Protanomaly

7.9987, 8.2542, 6.9660

Deuteranomaly

8.3128, 8.2056, 6.7759

Tritanomaly

8.6137, 8.3260, 8.3608

Monochromacy



Original Color

8.2838, 8.2969, 6.7951

Achromatopsia

8.0200, 8.4376, 9.1886

Achromatomaly

8.1197, 8.3991, 8.2144

CSS Examples

Text

The CSS property to change the color of the text to XYZ 8.2838, 8.2969, 6.7951 is called "color". The color property can be set on classes, ids or directly on the HTML element.

This example shows how text in the color rgb(92, 79, 69) looks like.

```
.text, #text, p{  
    color:rgb(92, 79, 69)  
}
```

If you want to add a text shadow in that color use the text-shadow property, you can generate a text shadow directly with our [CSS Text Shadow Generator](#).

Here you see how black text with a 4 pixel rgb(92, 79, 69) colored shadow looks like.

```
.shadow{ text-shadow: 4px 4px 2px rgb(92, 79, 69) }
```

Border

The CSS property to change the border of an element to XYZ 8.2838, 8.2969, 6.7951 is called "border". The border property can be set on classes, ids or directly on the HTML element.

This example shows the color as border, it can be applied via the CSS property "border" or "border-color".

```
.border, #border, table{ border:4px solid rgb(92, 79, 69) }
```

If only the border color should be changed use the property `border-color`.

```
.border{ border-color:rgb(92, 79, 69) }
```

If you want to add a box shadow in that color use:

Here you see how a box with a 4 pixel `rgb(92, 79, 69)` colored shadow looks like.

```
.boxshadow{ -moz-box-shadow:4px 4px 4px  
4px rgb(92, 79, 69); -webkit-box-  
shadow:4px 4px 4px 4px rgb(92, 79, 69);  
box-shadow:4px 4px 4px 4px rgb(92, 79, 69)  
}
```


Background

The CSS property to change the background color of an element to XYZ 8.2838, 8.2969, 6.7951 is called "background". The background property can be set on classes, ids or directly on the HTML element.

```
.background, #background, body{  
background: rgb(92, 79, 69) }
```

If only the background color should be changed can be used:

```
.background{ background-color: rgb(92, 79,  
69) }
```

This example shows the color as background, it is applied via the CSS property "background".

To optimize and compress your CSS code, you can use our [online CSS compressor and optimizer](#) based on csstidy. If you want to create a linear or radial gradient as background or border, check our [CSS Gradient Generator](#).

Hey! You found this booklet interesting? Support Converting Colors with the new Membership Option!

The pro membership hides all ads, plus gives you double the colors in the color bucket, and more awesome pro features!

[Learn more, Memberships starting at \\$2.50/m!](#)

**Follow me
on Twitter!**

@ConvertingColor