

# Converting Colors

XYZ(80.1695, 71.6661,  
101.0452)

Have a look what the booklet for  
XYZ(80.1695, 71.6661, 101.0452)  
contains.

<b>XYZ(80.1170, 71.6985, 100.8834)</b> .....	3
<b><i>Conversions</i></b> .....	4
<b><i>Details</i></b> .....	6
<b><i>Harmonies</i></b> .....	12
<b><i>Previews</i></b> .....	24
<b><i>Color Blindness Simulation</i></b> .....	28
<b><i>CSS Examples</i></b> .....	31

# Color

**XYZ(80.1170, 71.6985,  
100.8834)**

# Conversions

## Conversions Part 1

Format	Color
Hex	FECDFB
RGB	254, 205, 251
RGB Percent	100%, 80%, 98%
CMY	0.0039, 0.1961, 0.0157
CMYK	0.00, 0.19, 0.01, 0.00
HSL	304°, 96%, 90%
HSV	304°, 19%, 100%
XYZ	80.1170, 71.6985, 100.8834
YIQ	224.8950, 14.4380, 24.6940

# Conversions

## Conversions Part 2

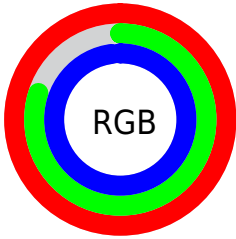
<b>Format</b>	<b>Color</b>
<b>R<sub>YB</sub></b>	254, 205, 251
Decimal	16698875
CIE <sub>Lab</sub>	87.82, 24.80, -15.97
CIE <sub>LCh</sub>	88, 29.499, 327.220
Yxy	71.6985, 0.3170, 0.2837
Android (android.graphics.Color)	4294888955 (0xFFFECDFB)
YUV	224.8950, 12.8698, 25.5251
Hunter-Lab	84.6750, 20.7103, -11.3668

# Details

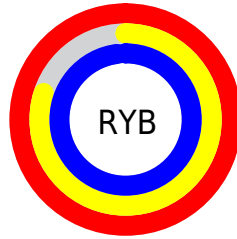
The XYZ color **80.1170, 71.6985, 100.8834** is a light color, and the websafe version is hex **FFCCFF**. A complement of this color would be **72.0067, 88.4190, 72.9499**, and the grayscale version is **71.3977, 75.1159, 81.8013**.

A 20% lighter version of the original color is **95.0500, 100.0000, 108.9000**, and **43.6699, 37.5781, 55.9906** is the 20% darker color. If you saturate the color by 10%, you get **74.2839, 60.4220, 97.7350**, and if you desaturate by 10%, it is **86.9427, 84.9546, 104.3742**.

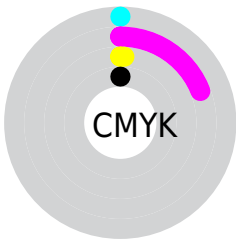
# Distribution



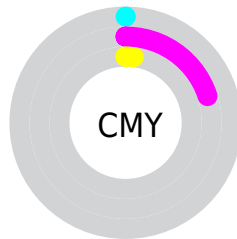
- Red (100%)
- Green (80%)
- Blue (98%)



- Red (100%)
- Yellow (80%)
- Blue (98%)



- Cyan (0%)
- Magenta (19%)
- Yellow (1%)
- Black (0%)



- Cyan (0%)
- Magenta (20%)
- Yellow (2%)

# Brightness & Saturation Gradients

These gradients show how the XYZ color 80.1170, 71.6985, 100.8834 changes by changing the brightness by 10 percent. The first figure shows a shift by +10% for each color and the second figure -10%.

Similar to the brightness gradients but the following saturation gradients show a change of the XYZ color 80.1170, 71.6985, 100.8834 by changing the saturation by 10% instead.



80.1170, 71.6985,  
100.8834

80.1170, 71.6985,  
100.8834

484.0576,  
466.4915, 584.2921

60.1234, 52.9124,  
76.4175

132.4799,  
121.6278, 164.4331

43.7680, 37.7329,  
56.2662

165.5799,  
153.5398, 204.3540

30.6853, 25.7754,  
40.0110

203.7794,  
190.5959, 250.2636

20.5100, 16.6557,  
27.2333

247.4439,  
233.1804, 302.5806

12.8767, 9.9893,  
17.5145

296.9386,  
281.6779, 361.7234

7.4201, 5.3919,  
10.4362

352.6288,

3.7748, 2.4790,

336.4726, 428.1105

5.5797

414.8800,  
397.9490, 502.1606

■ 1.5756, 0.8661,  
2.5266

■ 0.3764, 0.0000,  
0.8542

■ 80.1170, 71.6985,  
100.8834

■ 80.1170, 71.6985,  
100.8834

■ 74.2839, 60.4220,  
97.7350

■ 86.9427, 84.9546,  
104.3742

■ 69.3895, 51.0207,  
94.9086

94.5411, 99.7541,  
108.1318

■ 65.3843, 43.3948,  
92.3885

94.6837, 99.8112,  
108.8829

■ 62.2121, 37.4315,  
90.1559

■ 59.8099, 33.0052,  
88.1898

■ 58.1061, 29.9724,  
86.4664

■ 57.0153, 28.1624,  
84.9571

■ 56.4080, 27.3162,  
83.6187

■ 56.3721, 27.2705,  
83.5264

# Harmonies

## Analogous

The Analogous color harmony consists of three colors that are next to each other on the color wheel.



74.4991, 71.6985, 117.6637



80.1170, 71.6985, 100.8834



82.5134, 71.6985, 79.9546

# Triad

The Triadic color harmony groups three colors that are evenly spaced from another and form a triangle on the color wheel.



80.1170, 71.6985, 100.8834



68.8031, 71.6985, 45.5150



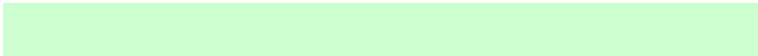
56.8521, 71.6985, 97.0851

# Complementary

The Complementary color scheme is a pair of colors which are on the opposite of each other on the color wheel.



80.1170, 71.6985, 100.8834



72.0067, 88.4190, 72.9499

# Split Complementary

Split-complementary colors differ from the complementary color scheme. The scheme consists of three colors, the original color and two neighbors of the complement color.



55.5537, 71.6985, 76.2103



80.1170, 71.6985, 100.8834



62.1672, 71.6985, 48.5304

# Square

The Square scheme is like the rectangle color scheme, but the four colors are evenly spaced on the color wheel.



80.1170, 71.6985, 100.8834



75.7071, 71.6985, 49.9068



57.4334, 71.6985, 58.9803



61.1083, 71.6985, 115.2198



# Rectangle

The Rectangle color scheme consists of four colors that form a rectangle on the color wheel.



80.1170, 71.6985, 100.8834



81.8470, 71.6985, 67.1903



57.4334, 71.6985, 58.9803



56.0685, 71.6985, 90.0595

# Sweetspot

The Sweet Spot groups the original color and five complimentary colors.



80.1192, 71.7016, 100.8849



90.2113, 90.5635, 106.5447



65.5819, 64.1523, 102.6935



19.2011, 19.1743, 22.7518



0.0000, 0.0000, 0.0000



20.3446, 21.4041, 23.3091



# Same Dimension

The Same Dimension uses a secret algorithm to generate beautiful new colors.



80.1192, 71.7016, 100.8849



78.5360, 67.8888, 100.5692



76.5789, 70.2855, 82.2424



18.7418, 18.2800, 22.5235



29.7400, 14.3853, 44.1430



2.9097, 1.4062, 4.3717



# Inverse Universe

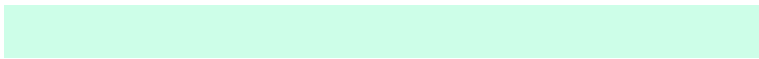
The Inverse Universe completely reimagines the original color for something new.



80.1192, 71.7016, 100.8849



78.5360, 67.8888, 100.5692



75.1796, 89.6882, 89.6585



18.7418, 18.2800, 22.5235



29.7400, 14.3853, 44.1430



2.9097, 1.4062, 4.3717



# Previews

## White Background



This preview shows how the XYZ color 80.1170, 71.6985, 100.8834 looks on a white background.

## Color Contrast Check

Large Text (above 18pt) WCAG AA × Fail

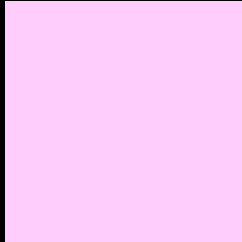
Any Text WCAG AA × Fail

Large Text (above 18pt) WCAG AAA × Fail

Any Text WCAG AAA × Fail



# Black Background



This preview shows how the XYZ color 80.1170, 71.6985, 100.8834 looks on a black background.

## Color Contrast Check

Large Text (above 18pt) WCAG AA ✓ Pass

Any Text WCAG AA ✓ Pass

Large Text (above 18pt) WCAG AAA ✓ Pass

Any Text WCAG AAA ✓ Pass

If you want to check with other color combinations, try the [Color Contrast Checker](#).

# XYZ 80.1170, 71.6985, 100.8834

## Background



This preview shows how black text looks on a background with the XYZ color 80.1170, 71.6985, 100.8834.



This preview shows how white text looks on a background with the XYZ color 80.1170, 71.6985,

100.8834.

# Color Blindness Simulation

Color vision deficiency is a very complex topic, and I could not describe the different causes any better than Wikipedia does, so if you want to learn more, you should check out their [article about color blindness](#).

## Dichromacy



### Original Color

80.1170, 71.6985, 100.8834

### Protanopia

70.8221, 72.0292, 104.7780

### Deuteranopia

73.3942, 71.9344, 99.6390



## Tritanopia

75.9523, 71.4159, 81.7330

# Trichromacy



## Original Color

80.1170, 71.6985, 100.8834



## Protanomaly

73.9309, 71.7429, 103.7171



## Deuteranomaly

75.4746, 71.4952, 100.2645



## Tritanomaly

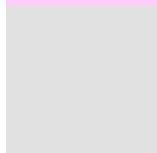
77.3349, 71.6191, 88.3451

# Monochromacy



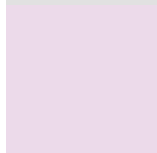
## Original Color

80.1170, 71.6985, 100.8834



## Achromatopsia

71.5672, 75.2942, 81.9954



## Achromatomaly

74.5148, 73.9162, 88.1818

# CSS Examples

## Text

The CSS property to change the color of the text to XYZ 80.1170, 71.6985, 100.8834 is called "color". The color property can be set on classes, ids or directly on the HTML element.

This example shows how text in the color `rgb(254, 205, 251)` looks like.

```
.text, #text, p{  
    color:rgb(254, 205, 251)  
}
```

If you want to add a text shadow in that color use the text-shadow property, you can generate a text shadow directly with our [CSS Text Shadow Generator](#).

Here you see how black text with a 4 pixel rgb(254, 205, 251) colored shadow looks like.

```
.shadow{ text-shadow: 4px 4px 2px rgb(254, 205, 251) }
```

## Border

The CSS property to change the border of an element to XYZ 80.1170, 71.6985, 100.8834 is called "border". The border property can be set on classes, ids or directly on the HTML element.

This example shows the color as border, it can be applied via the CSS property "border" or "border-color".

```
.border, #border, table{ border:4px solid rgb(254, 205, 251) }
```



If only the border color should be changed use the property border-color.

```
.border{ border-color:rgb(254, 205, 251) }
```

If you want to add a box shadow in that color use:

Here you see how a box with a 4 pixel rgb(254, 205, 251) colored shadow looks like.

```
.boxshadow{ -moz-box-shadow:4px 4px 4px  
4px rgb(254, 205, 251); -webkit-box-  
shadow:4px 4px 4px 4px rgb(254, 205, 251);  
box-shadow:4px 4px 4px 4px rgb(254, 205,  
251) }
```

# Background

The CSS property to change the background color of an element to XYZ 80.1170, 71.6985, 100.8834 is called "background". The background property can be set on classes, ids or directly on the HTML element.

```
.background, #background, body{  
background: rgb(254, 205, 251) }
```

If only the background color should be changed can be used:

```
.background{ background-color: rgb(254,  
205, 251) }
```

This example shows the color as background, it is applied via the CSS property "background".

To optimize and compress your CSS code, you can use our [online CSS compressor and optimizer](#) based on csstidy. If you want to create a linear or radial gradient as background or border, check our [CSS Gradient Generator](#).

Hey! You found this booklet interesting? Support Converting Colors with the new Membership Option!

The pro membership hides all ads, plus gives you double the colors in the color bucket, and more awesome pro features!

**[Learn more, Memberships starting at \\$2.50/m!](#)**

**Follow me  
on Twitter!**

@ConvertingColor