

Converting Colors

XYZ(81.0982, 72.7296,
102.2976)

Have a look what the booklet for
XYZ(81.0982, 72.7296, 102.2976)
contains.

XYZ(81.2824, 72.9775, 102.7305)	3
<i>Conversions</i>	4
<i>Details</i>	6
<i>Harmonies</i>	12
<i>Previews</i>	24
<i>Color Blindness Simulation</i>	28
<i>CSS Examples</i>	31

Color

**XYZ(81.2824, 72.9775,
102.7305)**

Conversions

Conversions Part 1

Format	Color
Hex	FFCFFD
RGB	255, 207, 253
RGB Percent	100%, 81%, 99%
CMY	0.0000, 0.1882, 0.0078
CMYK	0.00, 0.19, 0.01, 0.00
HSL	302°, 100%, 91%
HSV	302°, 19%, 100%
XYZ	81.2824, 72.9775, 102.7305
YIQ	226.5960, 13.8420, 24.4820

Conversions

Conversions Part 2

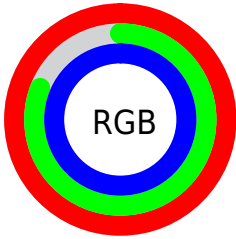
Format	Color
R_{YB}	255, 207, 253
Decimal	16764925
CIE _{Lab}	88.44, 24.44, -16.10
CIE _{LCh}	88, 29.260, 326.626
Yxy	72.9775, 0.3163, 0.2840
Android (android.graphics.Color)	4294955005 (0xFFFFCFFD)
YUV	226.5960, 13.0172, 24.9103
Hunter-Lab	85.4269, 20.3431, -11.5007

Details

The XYZ color **81.2824, 72.9775, 102.7305** is a light color, and the websafe version is hex **FFCCFF**. A complement of this color would be **73.0029, 89.3899, 73.7309**, and the grayscale version is **72.6234, 76.4055, 83.2055**.

A 20% lighter version of the original color is **95.0500, 100.0000, 108.9000**, and **44.4807, 38.4478, 57.3013** is the 20% darker color. If you saturate the color by 10%, you get **75.4280, 61.5383, 99.9476**, and if you desaturate by 10%, it is **88.1387, 86.4182, 105.8540**.

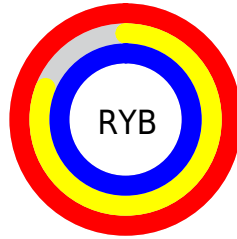
Distribution



Red (100%)

Green (81%)

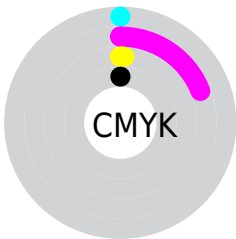
Blue (99%)



Red (100%)

Yellow (81%)

Blue (99%)

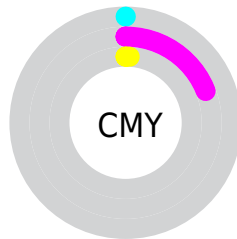


Cyan (0%)

Magenta (19%)

Yellow (1%)

Black (0%)



Cyan (0%)

Magenta (19%)

Yellow (1%)

Brightness & Saturation Gradients

These gradients show how the XYZ color 81.2824, 72.9775, 102.7305 changes by changing the brightness by 10 percent. The first figure shows a shift by +10% for each color and the second figure -10%.

Similar to the brightness gradients but the following saturation gradients show a change of the XYZ color 81.2824, 72.9775, 102.7305 by changing the saturation by 10% instead.

81.2824, 72.9775,
102.7305

81.2824, 72.9775,
102.7305

487.9151,
470.9368, 590.2332

61.0863, 53.9576,
77.9533

134.1083,
123.4453, 166.9890

44.5476, 38.5677,
57.5194

167.4688,
155.6619, 207.3073

31.3010, 26.4236,
41.0103

205.9482,
193.0462, 253.6432

20.9811, 17.1408,
28.0073

249.9117,
235.9826, 306.4150

13.2226, 10.3349,
18.0921

299.7249,
284.8554, 366.0414

7.6601, 5.6216,
10.8460

355.7529,

3.9282, 2.6164,

340.0492, 432.9408

5.8505

418.3612,
401.9482, 507.5319

■ 1.6616, 0.9349,
2.6871

■ 0.4320, 0.0000,
0.9369

■ 81.2824, 72.9775,
102.7305

■ 81.2824, 72.9775,
102.7305

■ 75.4280, 61.5383,
99.9476

■ 88.1387, 86.4182,
105.8540

■ 70.5227, 51.9962,
97.4847

95.0500, 100.0000,
108.9000

■ 66.5165, 44.2507,
95.3262

■ 63.3526, 38.1885,
93.4531

■ 60.9680, 33.6834,
91.8443

■ 59.2908, 30.5914,
90.4760

■ 58.2356, 28.7420,
89.3195

■ 57.6786, 27.8877,
88.3338

■ 57.6270, 27.8148,
88.2226

Harmonies

Analogous

The Analogous color harmony consists of three colors that are next to each other on the color wheel.



75.6030, 72.9775, 119.3624



81.2824, 72.9775, 102.7305



83.7602, 72.9775, 81.7616

Triad

The Triadic color harmony groups three colors that are evenly spaced from another and form a triangle on the color wheel.



81.2824, 72.9775, 102.7305



70.1619, 72.9775, 46.7244



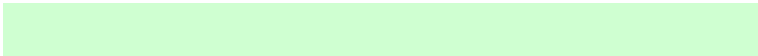
57.9607, 72.9775, 98.1155

Complementary

The Complementary color scheme is a pair of colors which are on the opposite of each other on the color wheel.



81.2824, 72.9775, 102.7305



73.0029, 89.3899, 73.7309

Split Complementary

Split-complementary colors differ from the complementary color scheme. The scheme consists of three colors, the original color and two neighbors of the complement color.



56.7179, 72.9775, 77.2022



81.2824, 72.9775, 102.7305



63.4760, 72.9775, 49.6184

Square

The Square scheme is like the rectangle color scheme, but the four colors are evenly spaced on the color wheel.



81.2824, 72.9775, 102.7305



77.0726, 72.9775, 51.3025



58.6697, 72.9775, 59.9993



62.1854, 72.9775, 116.3973

Rectangle

The Rectangle color scheme consists of four colors that form a rectangle on the color wheel.



81.2824, 72.9775, 102.7305



83.1470, 72.9775, 68.8839



58.6697, 72.9775, 59.9993



57.1932, 72.9775, 91.0670

Sweetspot

The Sweet Spot groups the original color and five complimentary colors.



81.2841, 72.9804, 102.7320



90.2594, 90.5827, 106.7979



66.5473, 65.3463, 103.7134



19.2125, 19.1789, 22.8118



0.0000, 0.0000, 0.0000



20.3446, 21.4041, 23.3091

Same Dimension

The Same Dimension uses a secret algorithm to generate beautiful new colors.



81.2841, 72.9804, 102.7320



78.7182, 67.9616, 101.5283



77.7535, 71.5682, 84.1402



18.7581, 18.2865, 22.6091



30.1258, 14.5396, 46.1742



2.9430, 1.4196, 4.5472

Inverse Universe

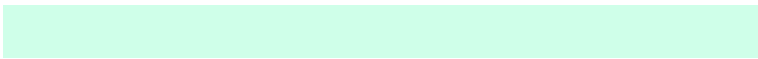
The Inverse Universe completely reimagines the original color for something new.



81.2841, 72.9804, 102.7320



78.7182, 67.9616, 101.5283



76.1450, 90.6467, 90.2769



18.7581, 18.2865, 22.6091



30.1258, 14.5396, 46.1742



2.9430, 1.4196, 4.5472

Previews

White Background



This preview shows how the XYZ color 81.2824, 72.9775, 102.7305 looks on a white background.

Color Contrast Check

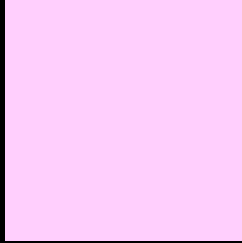
Large Text (above 18pt) WCAG AA × Fail

Any Text WCAG AA × Fail

Large Text (above 18pt) WCAG AAA × Fail

Any Text WCAG AAA × Fail

Black Background



This preview shows how the XYZ color 81.2824, 72.9775, 102.7305 looks on a black background.

Color Contrast Check

Large Text (above 18pt) WCAG AA ✓ Pass

Any Text WCAG AA ✓ Pass

Large Text (above 18pt) WCAG AAA ✓ Pass

Any Text WCAG AAA ✓ Pass

If you want to check with other color combinations, try the [Color Contrast Checker](#).

XYZ 81.2824, 72.9775, 102.7305

Background



This preview shows how black text looks on a background with the XYZ color 81.2824, 72.9775, 102.7305.



This preview shows how white text looks on a background with the XYZ color 81.2824, 72.9775,

Color Blindness Simulation

Color vision deficiency is a very complex topic, and I could not describe the different causes any better than Wikipedia does, so if you want to learn more, you should check out their [article about color blindness](#).

Dichromacy



Original Color

81.2824, 72.9775, 102.7305

Protanopia

72.2254, 73.5318, 104.9941

Deuteranopia

74.6016, 72.8998, 101.4059



Tritanopia

77.0815, 72.6992, 83.3685

Trichromacy



Original Color

81.2824, 72.9775, 102.7305



Protanomaly

75.0784, 73.0905, 103.9167



Deuteranomaly

76.9615, 72.9675, 102.1233



Tritanomaly

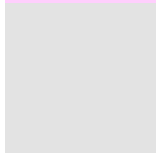
78.4775, 72.9031, 90.0562

Monochromacy



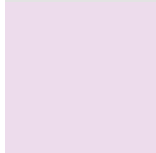
Original Color

81.2824, 72.9775, 102.7305



Achromatopsia

73.0128, 76.8151, 83.6517



Achromatomaly

75.6586, 75.2471, 89.8934

CSS Examples

Text

The CSS property to change the color of the text to XYZ 81.2824, 72.9775, 102.7305 is called "color". The color property can be set on classes, ids or directly on the HTML element.

This example shows how text in the color `rgb(255, 207, 253)` looks like.

```
.text, #text, p{  
    color:rgb(255, 207, 253)  
}
```

If you want to add a text shadow in that color use the text-shadow property, you can generate a text shadow directly with our [CSS Text Shadow Generator](#).

Here you see how black text with a 4 pixel rgb(255, 207, 253) colored shadow looks like.

```
.shadow{ text-shadow: 4px 4px 2px rgb(255, 207, 253) }
```

Border

The CSS property to change the border of an element to XYZ 81.2824, 72.9775, 102.7305 is called "border". The border property can be set on classes, ids or directly on the HTML element.

This example shows the color as border, it can be applied via the CSS property "border" or "border-color".

```
.border, #border, table{ border:4px solid rgb(255, 207, 253) }
```


If only the border color should be changed use the property `border-color`.

```
.border{ border-color:rgb(255, 207, 253) }
```

If you want to add a box shadow in that color use:

Here you see how a box with a 4 pixel `rgb(255, 207, 253)` colored shadow looks like.

```
.boxshadow{ -moz-box-shadow:4px 4px 4px  
4px rgb(255, 207, 253); -webkit-box-  
shadow:4px 4px 4px 4px rgb(255, 207, 253);  
box-shadow:4px 4px 4px 4px rgb(255, 207,  
253) }
```

Background

The CSS property to change the background color of an element to XYZ 81.2824, 72.9775, 102.7305 is called "background". The background property can be set on classes, ids or directly on the HTML element.

```
.background, #background, body{  
background: rgb(255, 207, 253) }
```

If only the background color should be changed can be used:

```
.background{ background-color: rgb(255,  
207, 253) }
```

This example shows the color as background, it is applied via the CSS property "background".

To optimize and compress your CSS code, you can use our [online CSS compressor and optimizer](#) based on csstidy. If you want to create a linear or radial gradient as background or border, check our [CSS Gradient Generator](#).

Hey! You found this booklet interesting? Support Converting Colors with the new Membership Option!

The pro membership hides all ads, plus gives you double the colors in the color bucket, and more awesome pro features!

[Learn more, Memberships starting at \\$2.50/m!](#)

**Follow me
on Twitter!**

@ConvertingColor