

Converting Colors

XYZ(92.0964, 78.5883,
101.1348)

Have a look what the booklet for
XYZ(92.0964, 78.5883, 101.1348)
contains.

XYZ(80.8081, 72.7878, 100.2329)	3
<i>Conversions</i>	4
<i>Details</i>	6
<i>Harmonies</i>	12
<i>Previews</i>	24
<i>Color Blindness Simulation</i>	28
<i>CSS Examples</i>	31

Color

**XYZ(80.8081, 72.7878,
100.2329)**

Conversions

Conversions Part 1

Format	Color
Hex	FFCFFA
RGB	255, 207, 250
RGB Percent	100%, 81%, 98%
CMY	0.0000, 0.1882, 0.0196
CMYK	0.00, 0.19, 0.02, 0.00
HSL	306°, 100%, 91%
HSV	306°, 19%, 100%
XYZ	80.8081, 72.7878, 100.2329
YIQ	226.2540, 14.8050, 23.5490

Conversions

Conversions Part 2

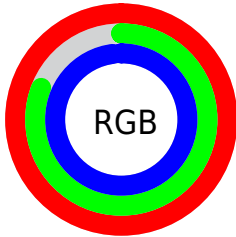
Format	Color
R _Y B	255, 207, 250
Decimal	16764922
CIE Lab	88.35, 23.90, -14.65
CIE LCh	88, 28.033, 328.495
Yxy	72.7878, 0.3184, 0.2868
Android (android.graphics.Color)	4294955002 (0xFFFFCFFA)
YUV	226.2540, 11.7068, 25.2102
Hunter-Lab	85.3158, 19.7663, -9.9356

Details

The XYZ color **80.8081, 72.7878, 100.2329** is a light color, and the websafe version is hex **FFCCFF**. A complement of this color would be **73.3780, 89.5400, 75.7059**, and the grayscale version is **72.3845, 76.1541, 82.9318**.

A 20% lighter version of the original color is **95.0500, 100.0000, 108.9000**, and **44.1426, 38.3125, 55.5206** is the 20% darker color. If you saturate the color by 10%, you get **74.7088, 61.2506, 96.1604**, and if you desaturate by 10%, it is **87.9143, 86.3285, 104.6719**.

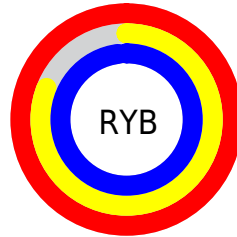
Distribution



Red (100%)

Green (81%)

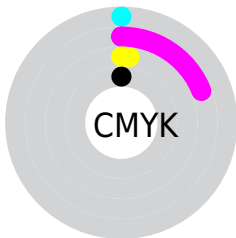
Blue (98%)



Red (100%)

Yellow (81%)

Blue (98%)

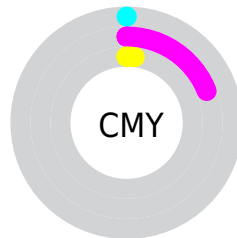


Cyan (0%)

Magenta (19%)

Yellow (2%)

Black (0%)



Cyan (0%)

Magenta (19%)

Yellow (2%)

Brightness & Saturation Gradients

These gradients show how the XYZ color 80.8081, 72.7878, 100.2329 changes by changing the brightness by 10 percent. The first figure shows a shift by +10% for each color and the second figure -10%.

Similar to the brightness gradients but the following saturation gradients show a change of the XYZ color 80.8081, 72.7878, 100.2329 by changing the saturation by 10% instead.

80.8081, 72.7878,
100.2329

80.8081, 72.7878,
100.2329

486.3472,
470.2790, 582.1922

60.6943, 53.8025,
75.8771

133.4459,
123.1759, 163.5319

44.2301, 38.4438,
55.8257

166.7005,
155.3475, 203.3121

31.0501, 26.3273,
39.6601

205.0662,
192.6833, 249.0709

20.7890, 17.0686,
26.9619

248.9083,
235.5676, 301.2268

13.0815, 10.2834,
17.3124

298.5920,
284.3850, 360.1983

7.5621, 5.5873,
10.2932

354.4829,

3.8655, 2.5958,

339.5198, 426.4040

5.4856

416.9461,
401.3563, 500.2625

■ 1.6263, 0.9246,
2.4712

■ 0.4095, 0.0000,
0.8249

■ 80.8081, 72.7878,
100.2329

■ 80.8081, 72.7878,
100.2329

■ 74.7088, 61.2506,
96.1604

■ 87.9143, 86.3285,
104.6719

■ 69.5635, 51.6125,
92.4337

95.0500, 100.0000,
108.9000

■ 65.3222, 43.7730,
89.0371

■ 61.9281, 37.6187,
85.9515

■ 59.3181, 33.0234,
83.1557

■ 57.4202, 29.8432,
80.6256

■ 56.1492, 27.9074,
78.3327

■ 55.3812, 26.9687,
76.2355

■ 55.3049, 26.8860,
75.9949

Harmonies

Analogous

The Analogous color harmony consists of three colors that are next to each other on the color wheel.



75.5394, 72.7878, 116.4754



80.8081, 72.7878, 100.2329



82.9365, 72.7878, 80.2308

Triad

The Triadic color harmony groups three colors that are evenly spaced from another and form a triangle on the color wheel.



80.8081, 72.7878, 100.2329



69.5230, 72.7878, 47.6881



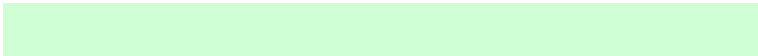
58.4252, 72.7878, 98.2744

Complementary

The Complementary color scheme is a pair of colors which are on the opposite of each other on the color wheel.



80.8081, 72.7878, 100.2329



73.3780, 89.5400, 75.7059

Split Complementary

Split-complementary colors differ from the complementary color scheme. The scheme consists of three colors, the original color and two neighbors of the complement color.



57.0402, 72.7878, 78.2843



80.8081, 72.7878, 100.2329



63.1929, 72.7878, 50.9493

Square

The Square scheme is like the rectangle color scheme, but the four colors are evenly spaced on the color wheel.



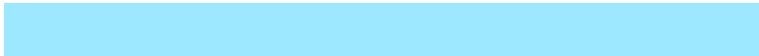
80.8081, 72.7878, 100.2329



76.1652, 72.7878, 51.6776



58.7293, 72.7878, 61.4271



62.6404, 72.7878, 115.2219

Rectangle

The Rectangle color scheme consists of four colors that form a rectangle on the color wheel.



80.8081, 72.7878, 100.2329



82.1898, 72.7878, 68.0728



58.7293, 72.7878, 61.4271



57.6257, 72.7878, 91.5960

Sweetspot

The Sweet Spot groups the original color and five complimentary colors.



80.8098, 72.7907, 100.2344



90.1063, 90.5215, 105.9916



67.4595, 65.8167, 103.7561



19.1762, 19.1644, 22.6206



0.0000, 0.0000, 0.0000



20.3446, 21.4041, 23.3091

Same Dimension

The Same Dimension uses a secret algorithm to generate beautiful new colors.



80.8098, 72.7907, 100.2344



78.1409, 67.7307, 98.4887



77.3097, 71.3907, 81.8032



18.7063, 18.2658, 22.3367



28.9311, 14.0617, 39.8830



2.8394, 1.3781, 4.0017

Inverse Universe

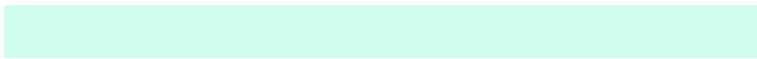
The Inverse Universe completely reimagines the original color for something new.



80.8098, 72.7907, 100.2344



78.1409, 67.7307, 98.4887



76.6054, 90.8309, 92.7010



18.7063, 18.2658, 22.3367



28.9311, 14.0617, 39.8830



2.8394, 1.3781, 4.0017

Previews

White Background



This preview shows how the XYZ color 80.8081, 72.7878, 100.2329 looks on a white background.

Color Contrast Check

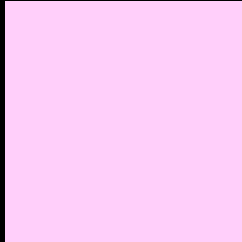
Large Text (above 18pt) WCAG AA × Fail

Any Text WCAG AA × Fail

Large Text (above 18pt) WCAG AAA × Fail

Any Text WCAG AAA × Fail

Black Background



This preview shows how the XYZ color 80.8081, 72.7878, 100.2329 looks on a black background.

Color Contrast Check

Large Text (above 18pt) WCAG AA ✓ Pass

Any Text WCAG AA ✓ Pass

Large Text (above 18pt) WCAG AAA ✓ Pass

Any Text WCAG AAA ✓ Pass

If you want to check with other color combinations, try the [Color Contrast Checker](#).

XYZ 80.8081, 72.7878, 100.2329

Background



This preview shows how black text looks on a background with the XYZ color 80.8081, 72.7878, 100.2329.



This preview shows how white text looks on a background with the XYZ color 80.8081, 72.7878,

Color Blindness Simulation

Color vision deficiency is a very complex topic, and I could not describe the different causes any better than Wikipedia does, so if you want to learn more, you should check out their [article about color blindness](#).

Dichromacy



Original Color

80.8081, 72.7878, 100.2329

Protanopia

71.9621, 73.0053, 104.9064

Deuteranopia

74.4541, 72.8780, 98.9496



Tritanopia

77.3043, 72.8300, 82.6563

Trichromacy



Original Color

80.8081, 72.7878, 100.2329



Protanomaly

74.6632, 72.5157, 102.9903



Deuteranomaly

76.8283, 72.9533, 99.6546



Tritanomaly

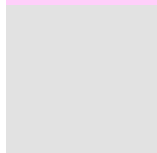
78.5500, 72.9740, 88.5426

Monochromacy



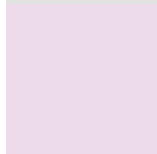
Original Color

80.8081, 72.7878, 100.2329



Achromatopsia

72.2879, 76.0525, 82.8211



Achromatomaly

75.2520, 74.6657, 89.0430

CSS Examples

Text

The CSS property to change the color of the text to XYZ 80.8081, 72.7878, 100.2329 is called "color". The color property can be set on classes, ids or directly on the HTML element.

This example shows how text in the color `rgb(255, 207, 250)` looks like.

```
.text, #text, p{  
    color:rgb(255, 207, 250)  
}
```

If you want to add a text shadow in that color use the text-shadow property, you can generate a text shadow directly with our [CSS Text Shadow Generator](#).

Here you see how black text with a 4 pixel rgb(255, 207, 250) colored shadow looks like.

```
.shadow{ text-shadow: 4px 4px 2px rgb(255, 207, 250) }
```

Border

The CSS property to change the border of an element to XYZ 80.8081, 72.7878, 100.2329 is called "border". The border property can be set on classes, ids or directly on the HTML element.

This example shows the color as border, it can be applied via the CSS property "border" or "border-color".

```
.border, #border, table{ border:4px solid rgb(255, 207, 250) }
```


If only the border color should be changed use the property `border-color`.

```
.border{ border-color:rgb(255, 207, 250) }
```

If you want to add a box shadow in that color use:

Here you see how a box with a 4 pixel `rgb(255, 207, 250)` colored shadow looks like.

```
.boxshadow{ -moz-box-shadow:4px 4px 4px  
4px rgb(255, 207, 250); -webkit-box-  
shadow:4px 4px 4px 4px rgb(255, 207, 250);  
box-shadow:4px 4px 4px 4px rgb(255, 207,  
250) }
```

Background

The CSS property to change the background color of an element to XYZ 80.8081, 72.7878, 100.2329 is called "background". The background property can be set on classes, ids or directly on the HTML element.

```
.background, #background, body{  
background: rgb(255, 207, 250) }
```

If only the background color should be changed can be used:

```
.background{ background-color: rgb(255,  
207, 250) }
```

This example shows the color as background, it is applied via the CSS property "background".

To optimize and compress your CSS code, you can use our [online CSS compressor and optimizer](#) based on csstidy. If you want to create a linear or radial gradient as background or border, check our [CSS Gradient Generator](#).

Hey! You found this booklet interesting? Support Converting Colors with the new Membership Option!

The pro membership hides all ads, plus gives you double the colors in the color bucket, and more awesome pro features!

[Learn more, Memberships starting at \\$2.50/m!](#)

**Follow me
on Twitter!**

@ConvertingColor