

Converting Colors

XYZ(92.5528, 67.8100,
186.4957)

Have a look what the booklet for
XYZ(92.5528, 67.8100, 186.4957)
contains.

XYZ(75.4101, 60.7202, 102.3534)	3
<i>Conversions</i>	4
<i>Details</i>	6
<i>Harmonies</i>	12
<i>Previews</i>	24
<i>Color Blindness Simulation</i>	28
<i>CSS Examples</i>	31

Color

**XYZ(75.4101, 60.7202,
102.3534)**

Conversions

Conversions Part 1

Format	Color
Hex	FFB3FF
RGB	255, 179, 255
RGB Percent	100%, 70%, 100%
CMY	0.0000, 0.2980, 0.0000
CMYK	0.00, 0.30, 0.00, 0.00
HSL	300°, 100%, 85%
HSV	300°, 30%, 100%
XYZ	75.4101, 60.7202, 102.3534
YIQ	210.3880, 20.9000, 39.7480

Conversions

Conversions Part 2

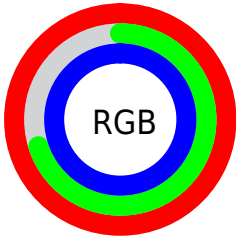
Format	Color
R_{YB}	255, 179, 255
Decimal	16757759
CIE _{Lab}	82.23, 39.48, -26.56
CIE _{LCh}	82, 47.584, 326.070
Yxy	60.7202, 0.3162, 0.2546
Android (android.graphics.Color)	4294947839 (0xFFFFB3FF)
YUV	210.3880, 21.9937, 39.1247
Hunter-Lab	77.9232, 36.3777, -23.3322

Details

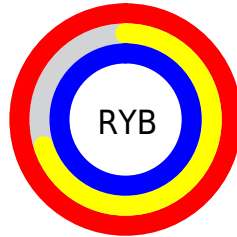
The XYZ color **75.4101, 60.7202, 102.3534** is a light color, and the websafe version is hex **FFCCFF**. A complement of this color would be **62.4890, 84.3593, 55.6403**, and the grayscale version is **61.3651, 64.5608, 70.3067**.

A 20% lighter version of the original color is **89.2855, 88.4709, 106.9785**, and **40.5526, 30.6148, 57.1980** is the 20% darker color. If you saturate the color by 10%, you get **70.7642, 51.4284, 100.8047**, and if you desaturate by 10%, it is **81.0033, 71.9065, 104.2178**.

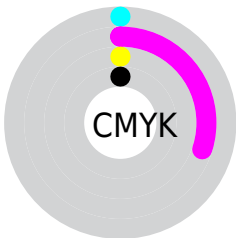
Distribution



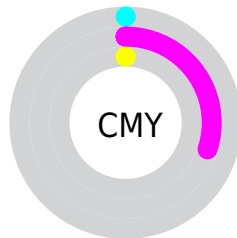
- Red (100%)
- Green (70%)
- Blue (100%)



- Red (100%)
- Yellow (70%)
- Blue (100%)



- Cyan (0%)
- Magenta (30%)
- Yellow (0%)
- Black (0%)



- Cyan (0%)
- Magenta (30%)
- Yellow (0%)

Brightness & Saturation Gradients

These gradients show how the XYZ color 75.4101, 60.7202, 102.3534 changes by changing the brightness by 10 percent. The first figure shows a shift by +10% for each color and the second figure -10%.

Similar to the brightness gradients but the following saturation gradients show a change of the XYZ color 75.4101, 60.7202, 102.3534 by changing the saturation by 10% instead.

75.4101, 60.7202,
102.3534

75.4101, 60.7202,
102.3534

468.3014,
427.2473, 589.0228

56.2443, 43.9994,
77.6396

125.8775,
105.8737, 166.4676

40.6366, 30.6700,
57.2633

157.9098,
135.0752, 206.7050

28.2216, 20.3477,
40.8059

194.9617,
169.2057, 252.9541

18.6341, 12.6481,
27.8489

237.3984,
208.6496, 305.6333

11.5086, 7.1866,
17.9737

285.5854,
253.7914, 365.1613

6.4798, 3.5791,
10.7619

339.8880,

3.1824, 1.4410,

305.0153, 431.9565

5.7948

400.6716,
362.7058, 506.4375

■ 1.2509, 0.2467,
2.6539

■ 0.1460, 0.0000,
0.9201

■ 75.4101, 60.7202,
102.3534

■ 75.4101, 60.7202,
102.3534

■ 70.7642, 51.4284,
100.8047

■ 81.0033, 71.9065,
104.2178

■ 67.0099, 43.9198,
99.5533

■ 87.5884, 85.0768,
106.4128

■ 64.0912, 38.0824,
98.5804

95.0500, 100.0000,
108.9000

■ 61.9443, 33.7886,
97.8648

■ 60.4960, 30.8921,
97.3820

■ 59.6595, 29.2190,
97.1032

■ 59.2955, 28.4910,
96.9818

■ 59.2900, 28.4800,
96.9800

Harmonies

Analogous

The Analogous color harmony consists of three colors that are next to each other on the color wheel.



66.6934, 60.7202, 129.8682



75.4101, 60.7202, 102.3534



79.3834, 60.7202, 70.0075

Triad

The Triadic color harmony groups three colors that are evenly spaced from another and form a triangle on the color wheel.



75.4101, 60.7202, 102.3534



59.0567, 60.7202, 24.6454



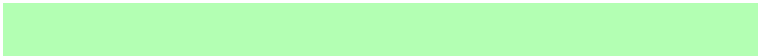
41.9392, 60.7202, 93.7529

Complementary

The Complementary color scheme is a pair of colors which are on the opposite of each other on the color wheel.



75.4101, 60.7202, 102.3534



62.4890, 84.3593, 55.6403

Split Complementary

Split-complementary colors differ from the complementary color scheme. The scheme consists of three colors, the original color and two neighbors of the complement color.



40.3953, 60.7202, 62.3676



75.4101, 60.7202, 102.3534



49.5768, 60.7202, 27.6270

Square

The Square scheme is like the rectangle color scheme, but the four colors are evenly spaced on the color wheel.



75.4101, 60.7202, 102.3534



69.2697, 60.7202, 29.8173



43.0264, 60.7202, 39.6313



47.5185, 60.7202, 123.9691

Rectangle

The Rectangle color scheme consists of four colors that form a rectangle on the color wheel.



75.4101, 60.7202, 102.3534



78.5028, 60.7202, 51.8567



43.0264, 60.7202, 39.6313



40.9612, 60.7202, 82.7708

Sweetspot

The Sweet Spot groups the original color and five complimentary colors.



75.4112, 60.7225, 102.3537



88.1607, 86.2214, 106.6036



52.7630, 49.0469, 101.2938



18.6488, 18.0124, 22.7438



0.0000, 0.0000, 0.0000



20.3446, 21.4041, 23.3091

Same Dimension

The Same Dimension uses a secret algorithm to generate beautiful new colors.



75.4112, 60.7225, 102.3537



72.4227, 54.7455, 101.3576



69.8860, 58.5124, 73.2582



18.7928, 18.3004, 22.7918



30.9803, 14.8814, 50.6741



3.0164, 1.4490, 4.9340

Inverse Universe

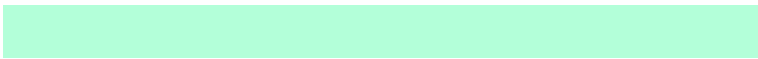
The Inverse Universe completely reimagines the original color for something new.



75.4112, 60.7225, 102.3537



72.4227, 54.7455, 101.3576



66.8765, 86.1143, 78.7445



18.7928, 18.3004, 22.7918



30.9803, 14.8814, 50.6741



3.0164, 1.4490, 4.9340

Previews

White Background



This preview shows how the XYZ color 75.4101, 60.7202, 102.3534 looks on a white background.

Color Contrast Check

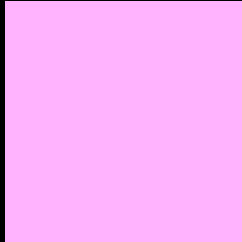
Large Text (above 18pt) WCAG AA × Fail

Any Text WCAG AA × Fail

Large Text (above 18pt) WCAG AAA × Fail

Any Text WCAG AAA × Fail

Black Background



This preview shows how the XYZ color 75.4101, 60.7202, 102.3534 looks on a black background.

Color Contrast Check

Large Text (above 18pt) WCAG AA ✓ Pass

Any Text WCAG AA ✓ Pass

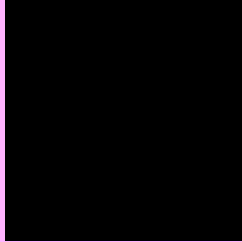
Large Text (above 18pt) WCAG AAA ✓ Pass

Any Text WCAG AAA ✓ Pass

If you want to check with other color combinations, try the [Color Contrast Checker](#).

XYZ 75.4101, 60.7202, 102.3534

Background



This preview shows how black text looks on a background with the XYZ color 75.4101, 60.7202, 102.3534.

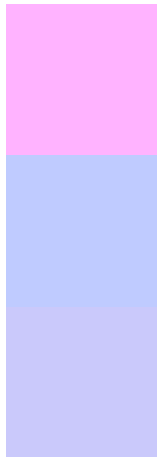


This preview shows how white text looks on a background with the XYZ color 75.4101, 60.7202,

Color Blindness Simulation

Color vision deficiency is a very complex topic, and I could not describe the different causes any better than Wikipedia does, so if you want to learn more, you should check out their [article about color blindness](#).

Dichromacy



Original Color

75.4101, 60.7202, 102.3534

Protanopia

60.8918, 61.0082, 103.1742

Deuteranopia

62.6564, 61.2949, 99.7955



Tritanopia

67.8081, 60.7113, 65.2713

Trichromacy



Original Color

75.4101, 60.7202, 102.3534



Protanomaly

65.0733, 60.0997, 102.7784



Deuteranomaly

66.4594, 60.5404, 100.2781



Tritanomaly

70.4519, 60.5349, 77.7832

Monochromacy



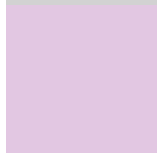
Original Color

75.4101, 60.7202, 102.3534



Achromatopsia

61.2578, 64.4480, 70.1838



Achromatomaly

65.5149, 62.5066, 80.5635

CSS Examples

Text

The CSS property to change the color of the text to XYZ 75.4101, 60.7202, 102.3534 is called "color". The color property can be set on classes, ids or directly on the HTML element.

This example shows how text in the color `rgb(255, 179, 255)` looks like.

```
.text, #text, p{  
    color:rgb(255, 179, 255)  
}
```

If you want to add a text shadow in that color use the text-shadow property, you can generate a text shadow directly with our [CSS Text Shadow Generator](#).

Here you see how black text with a 4 pixel rgb(255, 179, 255) colored shadow looks like.

```
.shadow{ text-shadow: 4px 4px 2px rgb(255, 179, 255) }
```

Border

The CSS property to change the border of an element to XYZ 75.4101, 60.7202, 102.3534 is called "border". The border property can be set on classes, ids or directly on the HTML element.

This example shows the color as border, it can be applied via the CSS property "border" or "border-color".

```
.border, #border, table{ border:4px solid rgb(255, 179, 255) }
```


If only the border color should be changed use the property `border-color`.

```
.border{ border-color:rgb(255, 179, 255) }
```

If you want to add a box shadow in that color use:

Here you see how a box with a 4 pixel `rgb(255, 179, 255)` colored shadow looks like.

```
.boxshadow{ -moz-box-shadow:4px 4px 4px  
4px rgb(255, 179, 255); -webkit-box-  
shadow:4px 4px 4px 4px rgb(255, 179, 255);  
box-shadow:4px 4px 4px 4px rgb(255, 179,  
255) }
```

Background

The CSS property to change the background color of an element to XYZ 75.4101, 60.7202, 102.3534 is called "background". The background property can be set on classes, ids or directly on the HTML element.

```
.background, #background, body{  
background: rgb(255, 179, 255) }
```

If only the background color should be changed can be used:

```
.background{ background-color: rgb(255,  
179, 255) }
```

This example shows the color as background, it is applied via the CSS property "background".

To optimize and compress your CSS code, you can use our [online CSS compressor and optimizer](#) based on csstidy. If you want to create a linear or radial gradient as background or border, check our [CSS Gradient Generator](#).

Hey! You found this booklet interesting? Support Converting Colors with the new Membership Option!

The pro membership hides all ads, plus gives you double the colors in the color bucket, and more awesome pro features!

[Learn more, Memberships starting at \\$2.50/m!](#)

**Follow me
on Twitter!**

@ConvertingColor