

Converting Colors

XYZ(94.0474, 74.0581,
197.5381)

Have a look what the booklet for
XYZ(94.0474, 74.0581, 197.5381)
contains.

XYZ(76.0223, 66.7453, 103.4841) 3
***Conversions* 4**
***Details* 6**
***Harmonies* 12**
***Previews* 24**
***Color Blindness Simulation* 28**
***CSS Examples* 31**

Color

**XYZ(76.0223, 66.7453,
103.4841)**

Conversions

Conversions Part 1

Format	Color
Hex	F6C5FF
RGB	246, 197, 255
RGB Percent	96%, 77%, 100%
CMY	0.0353, 0.2274, 0.0000
CMYK	0.04, 0.23, 0.00, 0.00
HSL	291°, 100%, 89%
HSV	291°, 23%, 100%
XYZ	76.0223, 66.7453, 103.4841
YIQ	218.2630, 10.5860, 28.4260

Conversions

Conversions Part 2

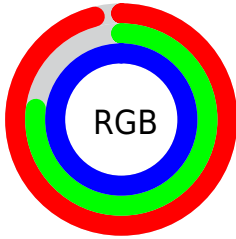
Format	Color
R _Y B	246, 197, 255
Decimal	16172543
CIE Lab	85.38, 27.17, -21.85
CIE LCh	85, 34.865, 321.185
Yxy	66.7453, 0.3087, 0.2710
Android (android.graphics.Color)	4294362623 (0xFFFF6C5FF)
YUV	218.2630, 18.1113, 24.3253
Hunter-Lab	81.6978, 23.1286, -17.9124

Details

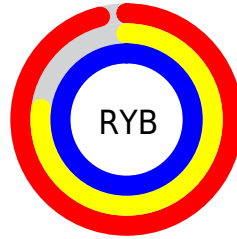
The XYZ color **76.0223, 66.7453, 103.4841** is a light color, and the websafe version is hex **FFCCFF**. A complement of this color would be **71.2932, 88.6738, 66.1847**, and the grayscale version is **66.6975, 70.1709, 76.4161**.

A 20% lighter version of the original color is **94.7318, 99.3636, 108.7939**, and **41.0018, 34.5410, 57.9321** is the 20% darker color. If you saturate the color by 10%, you get **69.3421, 55.4224, 101.6506**, and if you desaturate by 10%, it is **83.7151, 80.0477, 105.6462**.

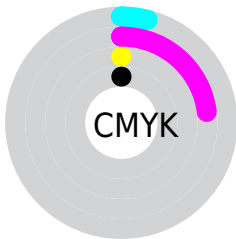
Distribution



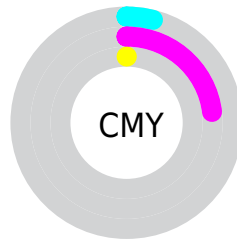
- Red (96%)
- Green (77%)
- Blue (100%)



- Red (96%)
- Yellow (77%)
- Blue (100%)



- Cyan (4%)
- Magenta (23%)
- Yellow (0%)
- Black (0%)



- Cyan (4%)
- Magenta (23%)
- Yellow (0%)

Brightness & Saturation Gradients

These gradients show how the XYZ color 76.0223, 66.7453, 103.4841 changes by changing the brightness by 10 percent. The first figure shows a shift by +10% for each color and the second figure -10%.

Similar to the brightness gradients but the following saturation gradients show a change of the XYZ color 76.0223, 66.7453, 103.4841 by changing the saturation by 10% instead.

76.0223, 66.7453,
103.4841

76.0223, 66.7453,
103.4841

470.3672,
449.0376, 592.6480

56.7479, 48.8777,
78.5804

126.7386,
114.5554, 168.0304

41.0422, 34.5224,
58.0316

158.9113,
145.2666, 208.5102

28.5399, 23.2952,
41.4192

196.1140,
181.0278, 255.0189

18.8756, 14.8117,
28.3246

238.7123,
222.2234, 307.9754

11.6839, 8.6873,
18.3293

287.0714,
269.2378, 367.7979

6.5995, 4.5378,
11.0148

341.5567,

3.2570, 1.9787,

322.4554, 434.9052

5.9625

402.5335,
382.2605, 509.7157

■ 1.2911, 0.5951,
2.7539

■ 0.1765, 0.0000,
0.9704

■ 76.0223, 66.7453,
103.4841

■ 76.0223, 66.7453,
103.4841

■ 69.3421, 55.4224,
101.6506

■ 83.7151, 80.0477,
105.6462

■ 63.6195, 45.9720,
100.1281

■ 92.4609, 95.4128,
108.1510

■ 58.8027, 38.2897,
98.8992

95.0500, 100.0000,
108.9000

■ 54.8324, 32.2575,
97.9441

■ 51.6424, 27.7430,
97.2408

■ 49.1558, 24.5930,
96.7639

■ 47.2799, 22.6220,
96.4823

■ 46.2025, 21.7331,
96.3675

Harmonies

Analogous

The Analogous color harmony consists of three colors that are next to each other on the color wheel.



69.0869, 66.7453, 121.2344



76.0223, 66.7453, 103.4841



79.6596, 66.7453, 79.5444

Triad

The Triadic color harmony groups three colors that are evenly spaced from another and form a triangle on the color wheel.



76.0223, 66.7453, 103.4841



65.7950, 66.7453, 37.6130



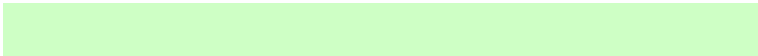
50.3076, 66.7453, 89.5509

Complementary

The Complementary color scheme is a pair of colors which are on the opposite of each other on the color wheel.



76.0223, 66.7453, 103.4841



71.2932, 88.6738, 66.1847

Split Complementary

Split-complementary colors differ from the complementary color scheme. The scheme consists of three colors, the original color and two neighbors of the complement color.



49.5855, 66.7453, 66.2116



76.0223, 66.7453, 103.4841



58.1084, 66.7453, 39.1983

Square

The Square scheme is like the rectangle color scheme, but the four colors are evenly spaced on the color wheel.



76.0223, 66.7453, 103.4841



73.4416, 66.7453, 43.7820



52.3277, 66.7453, 48.6810



54.3893, 66.7453, 112.1000

Rectangle

The Rectangle color scheme consists of four colors that form a rectangle on the color wheel.



76.0223, 66.7453, 103.4841



79.5327, 66.7453, 64.5603



52.3277, 66.7453, 48.6810



49.6781, 66.7453, 81.4411

Sweetspot

The Sweet Spot groups the original color and five complimentary colors.



76.0242, 66.7481, 103.4845



88.6061, 88.6138, 107.0419



63.3106, 63.5575, 103.5387



18.8518, 18.7673, 22.8788



0.0000, 0.0000, 0.0000



20.3446, 21.4041, 23.3091

Same Dimension

The Same Dimension uses a secret algorithm to generate beautiful new colors.



76.0242, 66.7481, 103.4845



73.0591, 61.6910, 102.6647



76.2996, 67.2318, 88.0602



18.4995, 18.1493, 22.7781



24.2460, 11.4097, 50.3590



2.4321, 1.1477, 4.9066

Inverse Universe

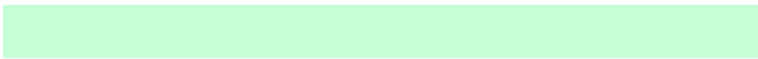
The Inverse Universe completely reimagines the original color for something new.



72.3485, 65.6513, 67.2535



68.8894, 60.4646, 60.7626



71.2256, 88.3663, 78.4968



18.1242, 18.0330, 19.2714



21.7790, 11.2009, 2.2206



2.1523, 1.1033, 0.3835

Previews

White Background



This preview shows how the XYZ color 76.0223, 66.7453, 103.4841 looks on a white background.

Color Contrast Check

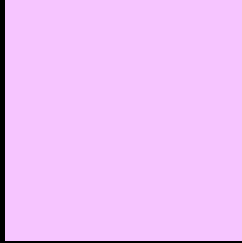
Large Text (above 18pt) WCAG AA × Fail

Any Text WCAG AA × Fail

Large Text (above 18pt) WCAG AAA × Fail

Any Text WCAG AAA × Fail

Black Background



This preview shows how the XYZ color 76.0223, 66.7453, 103.4841 looks on a black background.

Color Contrast Check

Large Text (above 18pt) WCAG AA ✓ Pass

Any Text WCAG AA ✓ Pass

Large Text (above 18pt) WCAG AAA ✓ Pass

Any Text WCAG AAA ✓ Pass

If you want to check with other color combinations, try the [Color Contrast Checker](#).

XYZ 76.0223, 66.7453, 103.4841

Background



This preview shows how black text looks on a background with the XYZ color 76.0223, 66.7453, 103.4841.

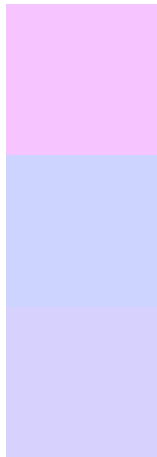


This preview shows how white text looks on a background with the XYZ color 76.0223, 66.7453,

Color Blindness Simulation

Color vision deficiency is a very complex topic, and I could not describe the different causes any better than Wikipedia does, so if you want to learn more, you should check out their [article about color blindness](#).

Dichromacy



Original Color

76.0223, 66.7453, 103.4841

Protanopia

66.4953, 67.1443, 104.0632

Deuteranopia

68.5544, 67.1399, 102.2746



Tritanopia

70.4177, 66.5271, 76.1474

Trichromacy



Original Color

76.0223, 66.7453, 103.4841



Protanomaly

69.5762, 66.9057, 103.8548



Deuteranomaly

71.0847, 66.9872, 102.9492



Tritanomaly

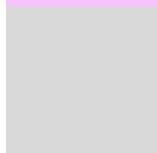
72.4143, 66.6542, 85.3928

Monochromacy



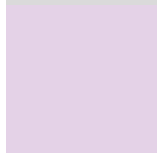
Original Color

76.0223, 66.7453, 103.4841



Achromatopsia

66.6397, 70.1102, 76.3500



Achromatomaly

69.4653, 68.3567, 85.1342

CSS Examples

Text

The CSS property to change the color of the text to XYZ 76.0223, 66.7453, 103.4841 is called "color". The color property can be set on classes, ids or directly on the HTML element.

This example shows how text in the color `rgb(246, 197, 255)` looks like.

```
.text, #text, p{  
    color:rgb(246, 197, 255)  
}
```

If you want to add a text shadow in that color use the text-shadow property, you can generate a text shadow directly with our [CSS Text Shadow Generator](#).

Here you see how black text with a 4 pixel rgb(246, 197, 255) colored shadow looks like.

```
.shadow{ text-shadow: 4px 4px 2px rgb(246, 197, 255) }
```

Border

The CSS property to change the border of an element to XYZ 76.0223, 66.7453, 103.4841 is called "border". The border property can be set on classes, ids or directly on the HTML element.

This example shows the color as border, it can be applied via the CSS property "border" or "border-color".

```
.border, #border, table{ border:4px solid rgb(246, 197, 255) }
```


If only the border color should be changed use the property `border-color`.

```
.border{ border-color:rgb(246, 197, 255) }
```

If you want to add a box shadow in that color use:

Here you see how a box with a 4 pixel `rgb(246, 197, 255)` colored shadow looks like.

```
.boxshadow{ -moz-box-shadow:4px 4px 4px  
4px rgb(246, 197, 255); -webkit-box-  
shadow:4px 4px 4px 4px rgb(246, 197, 255);  
box-shadow:4px 4px 4px 4px rgb(246, 197,  
255) }
```

Background

The CSS property to change the background color of an element to XYZ 76.0223, 66.7453, 103.4841 is called "background". The background property can be set on classes, ids or directly on the HTML element.

```
.background, #background, body{  
background: rgb(246, 197, 255) }
```

If only the background color should be changed can be used:

```
.background{ background-color: rgb(246,  
197, 255) }
```

This example shows the color as background, it is applied via the CSS property "background".

To optimize and compress your CSS code, you can use our [online CSS compressor and optimizer](#) based on csstidy. If you want to create a linear or radial gradient as background or border, check our [CSS Gradient Generator](#).

Hey! You found this booklet interesting? Support Converting Colors with the new Membership Option!

The pro membership hides all ads, plus gives you double the colors in the color bucket, and more awesome pro features!

[Learn more, Memberships starting at \\$2.50/m!](#)

**Follow me
on Twitter!**

@ConvertingColor