

Converting Colors

YIQ(104.6380, 75.9180, 44.8620)

Have a look what the booklet for
YIQ(104.6380, 75.9180, 44.8620)
contains.

YIQ(104.6380, 75.9180, 44.8620)	3
<i>Conversions</i>	4
<i>Details</i>	6
<i>Harmonies</i>	12
<i>Previews</i>	24
<i>Color Blindness Simulation</i>	28
<i>CSS Examples</i>	31

Color

**YIQ(104.6380, 75.9180,
44.8620)**

Conversions

Conversions Part 1

Format	Color
Hex	CD3761
RGB	205, 55, 97
RGB Percent	80%, 22%, 38%
CMY	0.1957, 0.7845, 0.6193
CMYK	0.00, 0.73, 0.53, 0.20
HSL	343°, 60%, 51%
HSV	343°, 73%, 80%
XYZ	28.7279, 16.5838, 13.0129
YIQ	104.6380, 75.9180, 44.8620

Conversions

Conversions Part 2

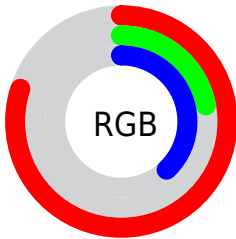
Format	Color
RYB	205, 55, 97
Decimal	13449057
CIELab	47.73, 60.85, 11.37
CIELCh	48, 61.900, 10.581
Yxy	16.5838, 0.4926, 0.2843
Android (android.graphics.Color)	4291639137 (0xFFCD3761)
YUV	104.6380, -3.7655, 88.0175
Hunter-Lab	40.7232, 54.6559, 9.5604

Details

The YIQ color **104.6380, 75.9180, 44.8620** is a dark color, and the websafe version is hex **CC3366**. The color can be described as dark muted rose. A complement of this color would be **155.3620, -75.9180, -44.8620**, and the grayscale version is **105.0000, 0.0000, 0.0000**.

A 20% lighter version of the original color is **159.3340, 73.7180, 40.6780**, and **49.1690, 70.0490, 46.6010** is the 20% darker color. If you saturate the color by 10%, you get **90.6010, 86.5080, 51.1800**, and if you desaturate by 10%, it is **118.0880, 65.6030, 39.0670**.

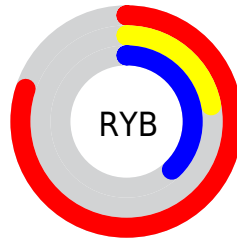
Distribution



Red (80%)

Green (22%)

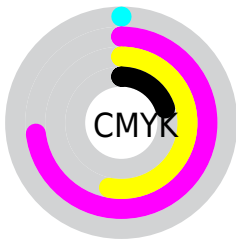
Blue (38%)



Red (80%)

Yellow (22%)

Blue (38%)

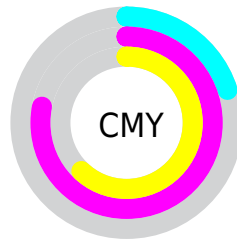


Cyan (0%)

Magenta (73%)

Yellow (53%)

Black (20%)



Cyan (20%)

Magenta (78%)

Yellow (62%)

Brightness & Saturation Gradients

These gradients show how the YIQ color 104.6380, 75.9180, 44.8620 changes by changing the brightness by 10 percent. The first figure shows a shift by +10% for each color and the second figure -10%.

Similar to the brightness gradients but the following saturation gradients show a change of the YIQ color 104.6380, 75.9180, 44.8620 by changing the saturation by 10% instead.

■ 104.6380, 75.9180,
44.8620

■ 104.6380, 75.9180,
44.8620

255.0000, -0.0000,
-0.0000

■ 70.1530, 76.1460,
51.7460

■ 159.3340, 73.7180,
40.6780

■ 49.1690, 70.0490,
46.6010

■ 179.4350, 57.0760,
33.9080

■ 37.9190, 58.5890,
34.0210

■ 198.9490, 40.7090,
27.6610

■ 26.2840, 49.6510,
19.7870

■ 219.1640, 23.7460,
21.2020

■ 17.5700, 33.9260,
12.9180

■ 239.1510, 7.4250,
14.1210

■ 5.6810, 11.3240,
4.0280

■ 0.0000, 0.0000,

0.0000

■ 104.6380, 75.9180,
44.8620

■ 104.6380, 75.9180,
44.8620

■ 90.6010, 86.5080,
51.1800

■ 118.0880, 65.6030,
39.0670

■ 77.2650, 96.5020,
57.2860

■ 132.1250, 55.0130,
32.7490

■ 67.9070, 103.5620,
61.4980

■ 145.4610, 45.0190,
26.6430

■ 159.4980, 34.4290,
20.3250

■ 172.9480, 24.1140,
14.5300

■ 186.9850, 13.5240,
8.2120

■ 200.9080, 3.2550,
1.5830

■ 214.3580, -7.0600,
-4.2120

■ 228.3950,
-17.6500, -10.5300

Harmonies

Analogous

The Analogous color harmony consists of three colors that are next to each other on the color wheel.



110.7660, 46.6190, 52.7230



104.6380, 75.9180, 44.8620



107.1010, 80.7830, 17.2550

Triad

The Triadic color harmony groups three colors that are evenly spaced from another and form a triangle on the color wheel.



104.6380, 75.9180, 44.8620



95.4700, -6.1810, -47.6930



99.3040, -103.2520, -1.0120

Complementary

The Complementary color scheme is a pair of colors which are on the opposite of each other on the color wheel.



104.6380, 75.9180, 44.8620



155.3620, -75.9180, -44.8620

Split Complementary

Split-complementary colors differ from the complementary color scheme. The scheme consists of three colors, the original color and two neighbors of the complement color.



99.7650, -94.9050, -14.6250



104.6380, 75.9180, 44.8620



87.9090, -61.5210, -46.9690

Square

The Square scheme is like the rectangle color scheme, but the four colors are evenly spaced on the color wheel.



104.6380, 75.9180, 44.8620



104.5590, 39.3450, -35.7510



95.3530, -79.7260, -30.9100



91.6560, -101.0070, 7.8650

Rectangle

The Rectangle color scheme consists of four colors that form a rectangle on the color wheel.



104.6380, 75.9180, 44.8620



106.7080, 76.6150, -6.3370



95.3530, -79.7260, -30.9100



100.1530, -101.5090, -5.0690

Sweetspot

The Sweet Spot groups the original color and five complimentary colors.



104.6380, 75.9180, 44.8620



217.5680, 28.2400, 16.8480



104.3920, 16.2180, 69.5460



105.3060, 17.0540, 10.3180



0.0000, 0.0000, 0.0000



128.0000, -0.0000, -0.0000

Same Dimension

The Same Dimension uses a secret algorithm to generate beautiful new colors.



104.6380, 75.9180, 44.8620



105.1580, 113.2810, 67.0810



118.6340, 80.6000, 15.0640



95.3320, 4.9970, 3.0530



54.8780, 84.1700, 49.4980



12.6160, 19.1170, 11.4770

Inverse Universe

The Inverse Universe completely reimagines the original color for something new.



104.6380, 75.9180, 44.8620



105.1580, 113.2810, 67.0810



141.3660, -80.6000, -15.0640



95.3320, 4.9970, 3.0530



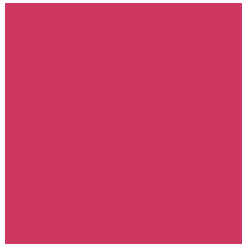
54.8780, 84.1700, 49.4980



12.6160, 19.1170, 11.4770

Previews

White Background



This preview shows how the YIQ color 104.6380, 75.9180, 44.8620 looks on a white background.

Color Contrast Check

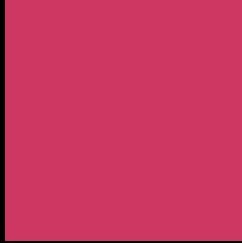
Large Text (above 18pt) WCAG AA ✓ Pass

Any Text WCAG AA ✓ Pass

Large Text (above 18pt) WCAG AAA ✓ Pass

Any Text WCAG AAA × Fail

Black Background



This preview shows how the YIQ color 104.6380, 75.9180, 44.8620 looks on a black background.

Color Contrast Check

Large Text (above 18pt) WCAG AA ✓ Pass

Any Text WCAG AA × Fail

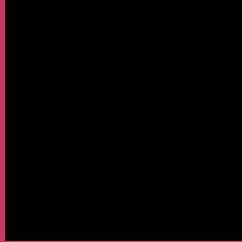
Large Text (above 18pt) WCAG AAA × Fail

Any Text WCAG AAA × Fail

If you want to check with other color combinations, try the [Color Contrast Checker](#).

YIQ 104.6380, 75.9180, 44.8620

Background



This preview shows how black text looks on a background with the YIQ color 104.6380, 75.9180, 44.8620.



This preview shows how white text looks on a background with the YIQ color 104.6380, 75.9180,

Color Blindness Simulation

Color vision deficiency is a very complex topic, and I could not describe the different causes any better than Wikipedia does, so if you want to learn more, you should check out their [article about color blindness](#).

Dichromacy



Original Color

104.6380, 75.9180, 44.8620

Protanopia

114.2970, -5.0900, 4.1420

Deuteranopia

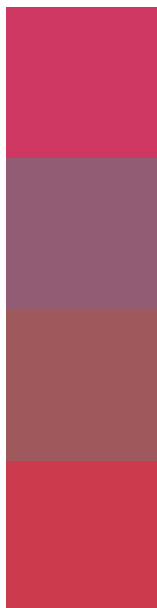
114.0100, 20.4030, -0.8210



Tritanopia

104.5010, 83.0730, 30.8250

Trichromacy



Original Color

104.6380, 75.9180, 44.8620

Protanomaly

110.8820, 24.4800, 18.9120

Deuteranomaly

110.3860, 40.4360, 16.0840

Tritanomaly

104.4070, 80.6420, 36.3380

Monochromacy



Original Color

104.6380, 75.9180, 44.8620

Achromatopsia

105.0000, 0.0000, 0.0000

Achromatomaly

104.8560, 27.3690, 16.1130

CSS Examples

Text

The CSS property to change the color of the text to YIQ 104.6380, 75.9180, 44.8620 is called "color". The color property can be set on classes, ids or directly on the HTML element.

This example shows how text in the color `rgb(205, 55, 97)` looks like.

```
.text, #text, p{  
    color:rgb(205, 55, 97)  
}
```

If you want to add a text shadow in that color use the text-shadow property, you can generate a text shadow directly with our [CSS Text Shadow Generator](#).

Here you see how black text with a 4 pixel rgb(205, 55, 97) colored shadow looks like.

```
.shadow{ text-shadow: 4px 4px 2px rgb(205, 55, 97) }
```

Border

The CSS property to change the border of an element to YIQ 104.6380, 75.9180, 44.8620 is called "border". The border property can be set on classes, ids or directly on the HTML element.

This example shows the color as border, it can be applied via the CSS property "border" or "border-color".

```
.border, #border, table{ border:4px solid rgb(205, 55, 97) }
```


If only the border color should be changed use the property border-color.

```
.border{ border-color:rgb(205, 55, 97) }
```

If you want to add a box shadow in that color use:

Here you see how a box with a 4 pixel rgb(205, 55, 97) colored shadow looks like.

```
.boxshadow{ -moz-box-shadow:4px 4px 4px  
4px rgb(205, 55, 97); -webkit-box-  
shadow:4px 4px 4px 4px rgb(205, 55, 97);  
box-shadow:4px 4px 4px 4px rgb(205, 55,  
97) }
```

Background

The CSS property to change the background color of an element to YIQ 104.6380, 75.9180, 44.8620 is called "background". The background property can be set on classes, ids or directly on the HTML element.

```
.background, #background, body{  
background: rgb(205, 55, 97) }
```

If only the background color should be changed can be used:

```
.background{ background-color: rgb(205, 55,  
97) }
```

This example shows the color as background, it is applied via the CSS property "background".

To optimize and compress your CSS code, you can use our [online CSS compressor and optimizer](#) based on csstidy. If you want to create a linear or radial gradient as background or border, check our [CSS Gradient Generator](#).

Hey! You found this booklet interesting? Support Converting Colors with the new Membership Option!

The pro membership hides all ads, plus gives you double the colors in the color bucket, and more awesome pro features!

[Learn more, Memberships starting at \\$2.50/m!](#)

**Follow me
on Twitter!**

@ConvertingColor