

Converting Colors

YIQ(105.2770, 51.5290, 29.8090)

Have a look what the booklet for
YIQ(105.2770, 51.5290, 29.8090)
contains.

YIQ(105.2770, 51.5290, 29.8090)	3
<i>Conversions</i>	4
<i>Details</i>	6
<i>Harmonies</i>	12
<i>Previews</i>	24
<i>Color Blindness Simulation</i>	28
<i>CSS Examples</i>	31

Color

**YIQ(105.2770, 51.5290,
29.8090)**

Conversions

Conversions Part 1

Format	Color
Hex	AD4863
RGB	173, 72, 99
RGB Percent	68%, 28%, 39%
CMY	0.3213, 0.7178, 0.6116
CMYK	0.00, 0.58, 0.43, 0.32
HSL	344°, 41%, 48%
HSV	344°, 58%, 68%
XYZ	21.8171, 14.4227, 13.4501
YIQ	105.2770, 51.5290, 29.8090

Conversions

Conversions Part 2

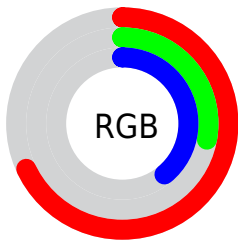
Format	Color
R_{YB}	173, 72, 99
Decimal	11356259
CIE _{Lab}	44.83, 43.93, 5.28
CIE _{LCh}	45, 44.246, 6.852
Yxy	14.4227, 0.4391, 0.2903
Android (android.graphics.Color)	4289546339 (0xFFAD4863)
YUV	105.2770, -3.0946, 59.3931
Hunter-Lab	37.9772, 36.0841, 5.5858

Details

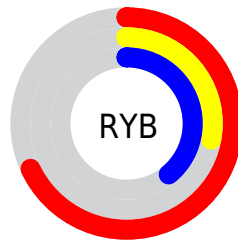
The YIQ color **105.2770, 51.5290, 29.8090** is a dark color, and the websafe version is hex **993366**. A complement of this color would be **139.7230, -51.5290, -29.8090**, and the grayscale version is **105.0000, 0.0000, 0.0000**.

A 20% lighter version of the original color is **159.8430, 55.7470, 30.4590**, and **50.1180, 47.7230, 32.7070** is the 20% darker color. If you saturate the color by 10%, you get **93.8160, 60.3770, 34.6570**, and if you desaturate by 10%, it is **116.7380, 42.6810, 24.9610**.

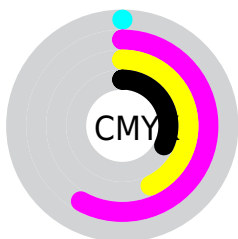
Distribution



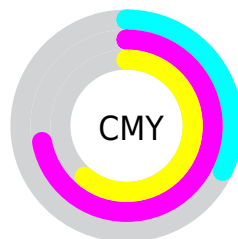
- Red (68%)
- Green (28%)
- Blue (39%)



- Red (68%)
- Yellow (28%)
- Blue (39%)



- Cyan (0%)
- Magenta (58%)
- Yellow (43%)
- Black (32%)



- Cyan (32%)
- Magenta (72%)
- Yellow (61%)

Brightness & Saturation Gradients

These gradients show how the YIQ color 105.2770, 51.5290, 29.8090 changes by changing the brightness by 10 percent. The first figure shows a shift by +10% for each color and the second figure -10%.

Similar to the brightness gradients but the following saturation gradients show a change of the YIQ color 105.2770, 51.5290, 29.8090 by changing the saturation by 10% instead.

■ 105.2770, 51.5290,
29.8090

■ 105.2770, 51.5290,
29.8090

■ 255.0000, -0.0000,
-0.0000

■ 78.9070, 49.6950,
30.0070

■ 159.8430, 55.7470,
30.4590

■ 50.4170, 48.3190,
32.9190

■ 185.5330, 53.6840,
29.3000

■ 30.2590, 42.7720,
28.8200

■ 204.5740, 37.2710,
23.8870

■ 19.6350, 35.3010,
15.5330

■ 224.2020, 20.5830,
17.9510

■ 10.5790, 20.5390,
7.7310

■ 243.8470, 5.2250,
9.9370

■ 0.0000, 0.0000,
0.0000

105.2770, 51.5290,
29.8090

105.2770, 51.5290,
29.8090

93.8160, 60.3770,
34.6570

116.7380, 42.6810,
24.9610

81.8820, 69.1790,
40.3390

128.6720, 33.8790,
19.2790

70.4210, 78.0270,
45.1870

140.1330, 25.0310,
14.4310

58.9600, 86.8750,
50.0350

151.5940, 16.1830,
9.5830

56.9710, 88.3420,
50.9820


162.9410, 7.6560,
4.4240

174.9890, -1.4670,
-0.9470

186.4500,
-10.3150, -5.7950

197.7970,

-18.8420, -10.9540

 209.8450,
-27.9650, -16.3250

Harmonies

Analogous

The Analogous color harmony consists of three colors that are next to each other on the color wheel.



108.2330, 28.4660, 34.7860



105.2770, 51.5290, 29.8090



104.2000, 58.4550, 14.4150

Triad

The Triadic color harmony groups three colors that are evenly spaced from another and form a triangle on the color wheel.



105.2770, 51.5290, 29.8090



96.6150, 1.3810, -30.5470



88.9880, -87.9830, -7.9110

Complementary

The Complementary color scheme is a pair of colors which are on the opposite of each other on the color wheel.



105.2770, 51.5290, 29.8090



139.7230, -51.5290, -29.8090

Split Complementary

Split-complementary colors differ from the complementary color scheme. The scheme consists of three colors, the original color and two neighbors of the complement color.



89.1870, -81.6540, -17.9900



105.2770, 51.5290, 29.8090



80.8760, -56.7540, -39.7460

Square

The Square scheme is like the rectangle color scheme, but the four colors are evenly spaced on the color wheel.



105.2770, 51.5290, 29.8090



101.0550, 32.5570, -22.8590



85.7840, -70.6940, -29.3980



96.6700, -60.0640, 9.2480

Rectangle

The Rectangle color scheme consists of four colors that form a rectangle on the color wheel.



105.2770, 51.5290, 29.8090



104.2020, 54.9730, 0.4210



85.7840, -70.6940, -29.3980



89.4780, -86.6070, -10.8230

Sweetspot

The Sweet Spot groups the original color and five complimentary colors.



105.2770, 51.5290, 29.8090



197.2140, 20.3090, 11.9010



105.0420, 10.4910, 46.6750



95.8600, 12.3780, 6.9540



240.0000, -0.0000, -0.0000



112.0000, -0.0000, 0.0000

Same Dimension

The Same Dimension uses a secret algorithm to generate beautiful new colors.



105.2770, 51.5290, 29.8090



118.7310, 80.0900, 46.3460



115.1130, 54.1460, 9.9060



80.9190, 4.7220, 2.5300



49.4100, 76.5600, 44.2400



7.5610, 11.7820, 6.7420

Inverse Universe

The Inverse Universe completely reimagines the original color for something new.



105.2770, 51.5290, 29.8090



118.7310, 80.0900, 46.3460



129.8870, -54.1460, -9.9060



80.9190, 4.7220, 2.5300



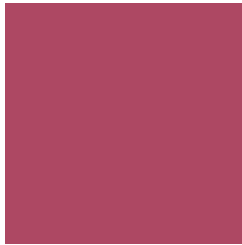
49.4100, 76.5600, 44.2400



7.5610, 11.7820, 6.7420

Previews

White Background



This preview shows how the YIQ color 105.2770, 51.5290, 29.8090 looks on a white background.

Color Contrast Check

Large Text (above 18pt) WCAG AA ✓ Pass

Any Text WCAG AA ✓ Pass

Large Text (above 18pt) WCAG AAA ✓ Pass

Any Text WCAG AAA × Fail

Black Background



This preview shows how the YIQ color 105.2770, 51.5290, 29.8090 looks on a black background.

Color Contrast Check

Large Text (above 18pt) WCAG AA ✓ Pass

Any Text WCAG AA × Fail

Large Text (above 18pt) WCAG AAA × Fail

Any Text WCAG AAA × Fail

If you want to check with other color combinations, try the [Color Contrast Checker](#).

YIQ 105.2770, 51.5290, 29.8090

Background



This preview shows how black text looks on a background with the YIQ color 105.2770, 51.5290, 29.8090.



This preview shows how white text looks on a background with the YIQ color 105.2770, 51.5290,

Color Blindness Simulation

Color vision deficiency is a very complex topic, and I could not describe the different causes any better than Wikipedia does, so if you want to learn more, you should check out their [article about color blindness](#).

Dichromacy



Original Color

105.2770, 51.5290, 29.8090

Protanopia

107.0690, -4.4480, 3.5200

Deuteranopia

107.6550, 14.2130, 1.2290



Tritanopia

104.6870, 55.8860, 22.4300

Trichromacy



Original Color

105.2770, 51.5290, 29.8090

Protanomaly

106.7020, 15.9990, 12.9190

Deuteranomaly

107.1070, 27.9200, 11.6320

Tritanomaly

104.8980, 53.9140, 25.1300

Monochromacy



Original Color

105.2770, 51.5290, 29.8090

Achromatopsia

105.0000, 0.0000, 0.0000

Achromatomaly

105.2030, 18.8420, 10.9540

CSS Examples

Text

The CSS property to change the color of the text to YIQ 105.2770, 51.5290, 29.8090 is called "color". The color property can be set on classes, ids or directly on the HTML element.

This example shows how text in the color `rgb(173, 72, 99)` looks like.

```
.text, #text, p{  
    color:rgb(173, 72, 99)  
}
```

If you want to add a text shadow in that color use the text-shadow property, you can generate a text shadow directly with our [CSS Text Shadow Generator](#).

Here you see how black text with a 4 pixel rgb(173, 72, 99) colored shadow looks like.

```
.shadow{ text-shadow: 4px 4px 2px rgb(173, 72, 99) }
```

Border

The CSS property to change the border of an element to YIQ 105.2770, 51.5290, 29.8090 is called "border". The border property can be set on classes, ids or directly on the HTML element.

This example shows the color as border, it can be applied via the CSS property "border" or "border-color".

```
.border, #border, table{ border:4px solid rgb(173, 72, 99) }
```


If only the border color should be changed use the property border-color.

```
.border{ border-color:rgb(173, 72, 99) }
```

If you want to add a box shadow in that color use:

Here you see how a box with a 4 pixel rgb(173, 72, 99) colored shadow looks like.

```
.boxshadow{ -moz-box-shadow:4px 4px 4px  
4px rgb(173, 72, 99); -webkit-box-  
shadow:4px 4px 4px 4px rgb(173, 72, 99);  
box-shadow:4px 4px 4px 4px rgb(173, 72,  
99) }
```

Background

The CSS property to change the background color of an element to YIQ 105.2770, 51.5290, 29.8090 is called "background". The background property can be set on classes, ids or directly on the HTML element.

```
.background, #background, body{  
background: rgb(173, 72, 99) }
```

If only the background color should be changed can be used:

```
.background{ background-color: rgb(173, 72,  
99) }
```

This example shows the color as background, it is applied via the CSS property "background".

To optimize and compress your CSS code, you can use our [online CSS compressor and optimizer](#) based on csstidy. If you want to create a linear or radial gradient as background or border, check our [CSS Gradient Generator](#).

Hey! You found this booklet interesting? Support Converting Colors with the new Membership Option!

The pro membership hides all ads, plus gives you double the colors in the color bucket, and more awesome pro features!

[Learn more, Memberships starting at \\$2.50/m!](#)

**Follow me
on Twitter!**

@ConvertingColor