

Converting Colors

YIQ(106.3660, 16.8250, 8.9610)

Have a look what the booklet for
YIQ(106.3660, 16.8250, 8.9610)
contains.

YIQ(106.3660, 16.8250, 8.9610)	3
<i>Conversions</i>	4
<i>Details</i>	6
<i>Harmonies</i>	12
<i>Previews</i>	24
<i>Color Blindness Simulation</i>	28
<i>CSS Examples</i>	31

Color

**YIQ(106.3660, 16.8250,
8.9610)**

Conversions

Conversions Part 1

Format	Color
Hex	806067
RGB	128, 96, 103
RGB Percent	50%, 38%, 40%
CMY	0.4980, 0.6236, 0.5960
CMYK	0.00, 0.25, 0.20, 0.50
HSL	347°, 14%, 44%
HSV	347°, 25%, 50%
XYZ	15.5358, 13.9337, 14.7067
YIQ	106.3660, 16.8250, 8.9610

Conversions

Conversions Part 2

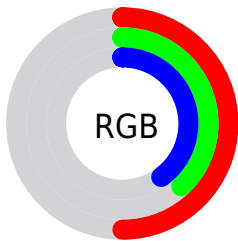
Format	Color
RYB	128, 96, 103
Decimal	8413287
CIELab	44.14, 14.17, 1.07
CIELCh	44, 14.207, 4.317
Yxy	13.9337, 0.3517, 0.3154
Android (android.graphics.Color)	4286603367 (0xFF806067)
YUV	106.3660, -1.6594, 18.9730
Hunter-Lab	37.3278, 8.9678, 2.7699

Details

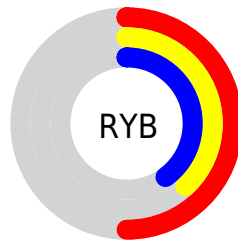
The YIQ color **106.3660, 16.8250, 8.9610** is a dark color, and the websafe version is hex **996666**. A complement of this color would be **117.6340, -16.8250, -8.9610**, and the grayscale version is **106.0000, -0.0000, -0.0000**.

A 20% lighter version of the original color is **157.9640, 18.0170, 9.3850**, and **58.4690, 15.0370, 8.3250** is the 20% darker color. If you saturate the color by 10%, you get **97.5950, 23.6100, 12.6500**, and if you desaturate by 10%, it is **115.1370, 10.0400, 5.2720**.

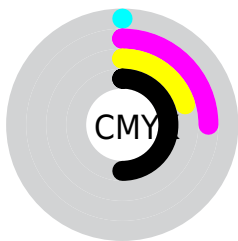
Distribution



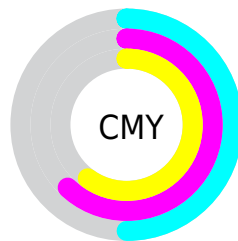
- Red (50%)
- Green (38%)
- Blue (40%)



- Red (50%)
- Yellow (38%)
- Blue (40%)



- Cyan (0%)
- Magenta (25%)
- Yellow (20%)
- Black (50%)



- Cyan (50%)
- Magenta (62%)
- Yellow (60%)

Brightness & Saturation Gradients

These gradients show how the YIQ color 106.3660, 16.8250, 8.9610 changes by changing the brightness by 10 percent. The first figure shows a shift by +10% for each color and the second figure -10%.

Similar to the brightness gradients but the following saturation gradients show a change of the YIQ color 106.3660, 16.8250, 8.9610 by changing the saturation by 10% instead.

■ 106.3660, 16.8250,
8.9610

■ 106.3660, 16.8250,
8.9610

255.0000, -0.0000,
-0.0000

■ 82.0670, 16.2290,
8.7490

■ 157.9640, 18.0170,
9.3850

■ 58.4690, 15.0370,
8.3250

■ 184.6760, 18.8880,
10.1200

■ 36.8710, 13.8450,
7.9010

■ 212.8610, 19.8050,
10.0210

■ 13.9960, 14.9910,
9.1590

■ 237.6860, 12.9280,
8.0000

■ 0.0000, 0.0000,
0.0000

■ 106.3660, 16.8250,

■ 106.3660, 16.8250,

8.9610

■ 97.5950, 23.6100,
12.6500

■ 88.8240, 30.3950,
16.3390

■ 80.6400, 36.9050,
19.5050

■ 71.8690, 43.6900,
23.1940

■ 63.0980, 50.4750,
26.8830

■ 54.3270, 57.2600,
30.5720

■ 45.5560, 64.0450,
34.2610

■ 41.4640, 67.3000,
35.8440

8.9610

■ 115.1370, 10.0400,
5.2720

■ 123.9080, 3.2550,
1.5830

■ 132.0920, -3.2550,
-1.5830

■ 140.8630,
-10.0400, -5.2720

■ 149.6340,
-16.8250, -8.9610

■ 158.4050,
-23.6100, -12.6500

■ 167.1760,
-30.3950, -16.3390

■ 175.3600,
-36.9050, -19.5050

■ 184.1310,
-43.6900, -23.1940

Harmonies

Analogous

The Analogous color harmony consists of three colors that are next to each other on the color wheel.



106.2280, 8.5260, 10.6860



106.3660, 16.8250, 8.9610



105.6990, 20.0810, 5.0170

Triad

The Triadic color harmony groups three colors that are evenly spaced from another and form a triangle on the color wheel.



106.3660, 16.8250, 8.9610



102.6870, 2.0190, -9.0610



101.2670, -22.7410, -0.8610

Complementary

The Complementary color scheme is a pair of colors which are on the opposite of each other on the color wheel.



106.3660, 16.8250, 8.9610



117.6340, -16.8250, -8.9610

Split Complementary

Split-complementary colors differ from the complementary color scheme. The scheme consists of three colors, the original color and two neighbors of the complement color.



100.0230, -25.1700, -6.4020



106.3660, 16.8250, 8.9610



100.7010, -9.7640, -10.2760

Square

The Square scheme is like the rectangle color scheme, but the four colors are evenly spaced on the color wheel.



106.3660, 16.8250, 8.9610



103.7700, 12.1510, -5.4570



99.6660, -19.8510, -9.1870



104.0340, -14.5350, 4.6090

Rectangle

The Rectangle color scheme consists of four colors that form a rectangle on the color wheel.



106.3660, 16.8250, 8.9610



105.2920, 19.6690, 1.4690



99.6660, -19.8510, -9.1870



100.4300, -24.7580, -2.8540

Sweetspot

The Sweet Spot groups the original color and five complimentary colors.



106.3660, 16.8250, 8.9610



156.5280, 7.3810, 3.9010



107.1230, 4.6280, 15.2520



78.6200, 4.1260, 2.3180



212.0000, -0.0000, -0.0000



84.0000, -0.0000, -0.0000

Same Dimension

The Same Dimension uses a secret algorithm to generate beautiful new colors.



106.3660, 16.8250, 8.9610



132.2040, 26.2690, 14.0210



110.8510, 16.5970, 2.0770



59.3210, 3.5300, 2.1060



41.4640, 67.3000, 35.8440



0.0000, 0.0000, 0.0000

Inverse Universe

The Inverse Universe completely reimagines the original color for something new.



106.3660, 16.8250, 8.9610



132.2040, 26.2690, 14.0210



113.1490, -16.5970, -2.0770



59.3210, 3.5300, 2.1060



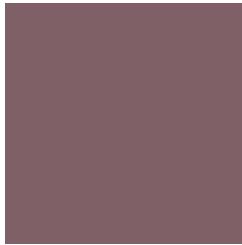
41.4640, 67.3000, 35.8440



0.0000, 0.0000, 0.0000

Previews

White Background



This preview shows how the YIQ color 106.3660, 16.8250, 8.9610 looks on a white background.

Color Contrast Check

Large Text (above 18pt) WCAG AA ✓ Pass

Any Text WCAG AA ✓ Pass

Large Text (above 18pt) WCAG AAA ✓ Pass

Any Text WCAG AAA × Fail

Black Background



This preview shows how the YIQ color 106.3660, 16.8250, 8.9610 looks on a black background.

Color Contrast Check

Large Text (above 18pt) WCAG AA ✓ Pass

Any Text WCAG AA × Fail

Large Text (above 18pt) WCAG AAA × Fail

Any Text WCAG AAA × Fail

If you want to check with other color combinations, try the [Color Contrast Checker](#).

YIQ 106.3660, 16.8250, 8.9610

Background



This preview shows how black text looks on a background with the YIQ color 106.3660, 16.8250, 8.9610.



This preview shows how white text looks on a background with the YIQ color 106.3660, 16.8250,

Color Blindness Simulation

Color vision deficiency is a very complex topic, and I could not describe the different causes any better than Wikipedia does, so if you want to learn more, you should check out their [article about color blindness](#).

Dichromacy



Original Color

106.3660, 16.8250, 8.9610

Protanopia

105.0540, -0.0920, 1.6680

Deuteranopia

105.5990, 8.6190, 3.4910



Tritanopia

106.3660, 16.8250, 8.9610

Trichromacy



Original Color

106.3660, 16.8250, 8.9610

Protanomaly

105.4570, 6.1430, 4.3110

Deuteranomaly

105.6210, 11.5530, 5.3850

Tritanomaly

106.3660, 16.8250, 8.9610

Monochromacy



Original Color

106.3660, 16.8250, 8.9610

Achromatopsia

106.0000, -0.0000, -0.0000

Achromatomaly

105.9300, 6.1890, 3.4770

CSS Examples

Text

The CSS property to change the color of the text to YIQ 106.3660, 16.8250, 8.9610 is called "color". The color property can be set on classes, ids or directly on the HTML element.

This example shows how text in the color `rgb(128, 96, 103)` looks like.

```
.text, #text, p{  
    color:rgb(128, 96, 103)  
}
```

If you want to add a text shadow in that color use the text-shadow property, you can generate a text shadow directly with our [CSS Text Shadow Generator](#).

Here you see how black text with a 4 pixel rgb(128, 96, 103) colored shadow looks like.

```
.shadow{ text-shadow: 4px 4px 2px rgb(128, 96, 103) }
```

Border

The CSS property to change the border of an element to YIQ 106.3660, 16.8250, 8.9610 is called "border". The border property can be set on classes, ids or directly on the HTML element.

This example shows the color as border, it can be applied via the CSS property "border" or "border-color".

```
.border, #border, table{ border:4px solid rgb(128, 96, 103) }
```


If only the border color should be changed use the property `border-color`.

```
.border{ border-color:rgb(128, 96, 103) }
```

If you want to add a box shadow in that color use:

Here you see how a box with a 4 pixel `rgb(128, 96, 103)` colored shadow looks like.

```
.boxshadow{ -moz-box-shadow:4px 4px 4px  
4px rgb(128, 96, 103); -webkit-box-  
shadow:4px 4px 4px 4px rgb(128, 96, 103);  
box-shadow:4px 4px 4px 4px rgb(128, 96,  
103) }
```

Background

The CSS property to change the background color of an element to YIQ 106.3660, 16.8250, 8.9610 is called "background". The background property can be set on classes, ids or directly on the HTML element.

```
.background, #background, body{  
background: rgb(128, 96, 103) }
```

If only the background color should be changed can be used:

```
.background{ background-color: rgb(128, 96,  
103) }
```

This example shows the color as background, it is applied via the CSS property "background".

To optimize and compress your CSS code, you can use our [online CSS compressor and optimizer](#) based on csstidy. If you want to create a linear or radial gradient as background or border, check our [CSS Gradient Generator](#).

Hey! You found this booklet interesting? Support Converting Colors with the new Membership Option!

The pro membership hides all ads, plus gives you double the colors in the color bucket, and more awesome pro features!

[Learn more, Memberships starting at \\$2.50/m!](#)

**Follow me
on Twitter!**

@ConvertingColor