

Converting Colors

YIQ(110.7930, 22.5120, -0.4960)

Have a look what the booklet for
YIQ(110.7930, 22.5120, -0.4960)
contains.

YIQ(110.7930, 22.5120, -0.4960)	3
<i>Conversions</i>	4
<i>Details</i>	6
<i>Harmonies</i>	12
<i>Previews</i>	24
<i>Color Blindness Simulation</i>	28
<i>CSS Examples</i>	31

Color

**YIQ(110.7930, 22.5120,
-0.4960)**

Conversions

Conversions Part 1

Format	Color
Hex	846955
RGB	132, 105, 85
RGB Percent	52%, 41%, 33%
CMY	0.4823, 0.5883, 0.6666
CMYK	0.00, 0.20, 0.36, 0.48
HSL	25°, 22%, 43%
HSV	25°, 36%, 52%
XYZ	16.2090, 15.6637, 10.7690
YIQ	110.7930, 22.5120, -0.4960

Conversions

Conversions Part 2

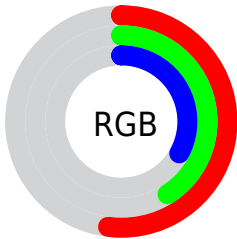
Format	Color
R_{YB}	132, 120, 85
Decimal	8677717
CIE Lab	46.53, 7.75, 15.32
CIE LCh	47, 17.167, 63.174
Yxy	15.6637, 0.3801, 0.3673
Android (android.graphics.Color)	4286867797 (0xFF846955)
YUV	110.7930, -12.7159, 18.5985
Hunter-Lab	39.5774, 3.8443, 11.5714

Details

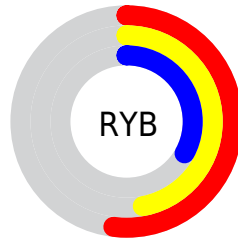
The YIQ color **110.7930, 22.5120, -0.4960** is a dark color, and the websafe version is hex **996666**. A complement of this color would be **106.2070, -22.5120, 0.4960**, and the grayscale version is **111.0000, -0.0000, 0.0000**.

A 20% lighter version of the original color is **162.5760, 24.6210, -0.1710**, and **62.8250, 19.4860, -0.7220** is the 20% darker color. If you saturate the color by 10%, you get **104.6150, 28.8850, -0.3550**, and if you desaturate by 10%, it is **116.9710, 16.1390, -0.6370**.

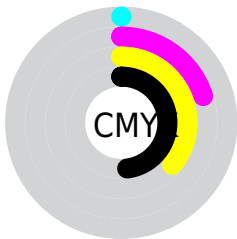
Distribution



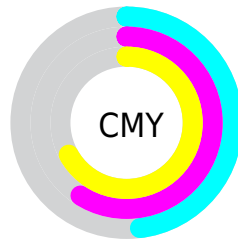
- Red (52%)
- Green (41%)
- Blue (33%)



- Red (52%)
- Yellow (47%)
- Blue (33%)



- Cyan (0%)
- Magenta (20%)
- Yellow (36%)
- Black (48%)



- Cyan (48%)
- Magenta (59%)
- Yellow (67%)

Brightness & Saturation Gradients

These gradients show how the YIQ color 110.7930, 22.5120, -0.4960 changes by changing the brightness by 10 percent. The first figure shows a shift by +10% for each color and the second figure -10%.

Similar to the brightness gradients but the following saturation gradients show a change of the YIQ color 110.7930, 22.5120, -0.4960 by changing the saturation by 10% instead.

■ 110.7930, 22.5120,
-0.4960

■ 110.7930, 22.5120,
-0.4960

■ 255.0000, -0.0000,
-0.0000

■ 86.3090, 20.9990,
-0.6090

■ 162.5760, 24.6210,
-0.1710

■ 62.8250, 19.4860,
-0.7220

■ 189.7610, 25.5380,
-0.2700

■ 40.3410, 17.9730,
-0.8350

■ 217.9460, 26.4550,
-0.3690

■ 20.1560, 17.0560,
-0.7360

■ 241.1620, 16.9190,
-3.7610

■ 0.0000, 0.0000,
0.0000

■ 253.7460, 3.5310,
-3.4210

■ 110.7930, 22.5120,
-0.4960

■ 110.7930, 22.5120,
-0.4960

■ 104.6150, 28.8850,
-0.3550

■ 116.9710, 16.1390,
-0.6370

■ 99.0240, 34.9830,
-0.7370

■ 122.5620, 10.0410,
-0.2550

■ 92.7320, 41.6770,
-0.9070

■ 128.8540, 3.3470,
-0.0850

■ 87.1410, 47.7750,
-1.2890

■ 134.4450, -2.7510,
0.2970

■ 80.9630, 54.1480,
-1.1480

■ 140.6230, -9.1240,
0.1560

■ 74.7850, 60.5210,
-1.0070

■ 146.8010,
-15.4970, 0.0150

■ 72.3400, 63.2720,
-1.3040

■ 152.3920,
-21.5950, 0.3970

■ 158.6840,

-28.2890, 0.5670

■ 164.2750,
-34.3870, 0.9490

Harmonies

Analogous

The Analogous color harmony consists of three colors that are next to each other on the color wheel.



111.6780, 24.5740, 6.1900



110.7930, 22.5120, -0.4960



109.4990, 14.3520, -6.8000

Triad

The Triadic color harmony groups three colors that are evenly spaced from another and form a triangle on the color wheel.



110.7930, 22.5120, -0.4960



104.0460, -23.9770, -11.5050



111.8830, -3.6240, 10.6160

Complementary

The Complementary color scheme is a pair of colors which are on the opposite of each other on the color wheel.



110.7930, 22.5120, -0.4960



106.2070, -22.5120, 0.4960

Split Complementary

Split-complementary colors differ from the complementary color scheme. The scheme consists of three colors, the original color and two neighbors of the complement color.



109.4080, -18.5240, 5.3160



110.7930, 22.5120, -0.4960



104.1470, -31.4510, -8.2110

Square

The Square scheme is like the rectangle color scheme, but the four colors are evenly spaced on the color wheel.



110.7930, 22.5120, -0.4960



105.7500, -11.4600, -12.5800



105.9180, -29.0680, -1.8360



112.8800, 9.6260, 12.7780

Rectangle

The Rectangle color scheme consists of four colors that form a rectangle on the color wheel.



110.7930, 22.5120, -0.4960



108.4980, 6.9250, -9.8670



105.9180, -29.0680, -1.8360



111.3060, -9.3090, 9.0190

Sweetspot

The Sweet Spot groups the original color and five complimentary colors.



110.7930, 22.5120, -0.4960



162.3770, 9.1240, -0.1560



102.1310, 19.3450, 18.3610



81.5230, 5.7770, -0.0710



214.0000, -0.0000, 0.0000



87.0000, -0.0000, -0.0000

Same Dimension

The Same Dimension uses a secret algorithm to generate beautiful new colors.



110.7930, 22.5120, -0.4960



137.9100, 35.3040, -1.0480



124.2940, 16.1870, -12.5250



62.9680, 3.0260, 0.2260



71.1550, 62.3550, -1.2050



1.4840, 1.5130, 0.1130

Inverse Universe

The Inverse Universe completely reimagines the original color for something new.



106.2070, -22.5120, 0.4960



130.6770, -35.5790, 0.5250



92.7060, -16.1870, 12.5250



62.4450, -2.7510, 0.2970



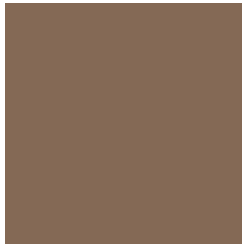
58.8450, -62.3550, 1.2050



0.9290, -1.2380, 0.4100

Previews

White Background



This preview shows how the YIQ color 110.7930, 22.5120, -0.4960 looks on a white background.

Color Contrast Check

Large Text (above 18pt) WCAG AA ✓ Pass

Any Text WCAG AA ✓ Pass

Large Text (above 18pt) WCAG AAA ✓ Pass

Any Text WCAG AAA × Fail

Black Background



This preview shows how the YIQ color 110.7930, 22.5120, -0.4960 looks on a black background.

Color Contrast Check

Large Text (above 18pt) WCAG AA ✓ Pass

Any Text WCAG AA × Fail

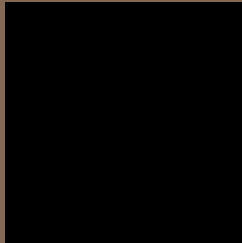
Large Text (above 18pt) WCAG AAA × Fail

Any Text WCAG AAA × Fail

If you want to check with other color combinations, try the [Color Contrast Checker](#).

YIQ 110.7930, 22.5120, -0.4960

Background



This preview shows how black text looks on a background with the YIQ color 110.7930, 22.5120, -0.4960.



This preview shows how white text looks on a background with the YIQ color 110.7930, 22.5120,

-0.4960.

Color Blindness Simulation

Color vision deficiency is a very complex topic, and I could not describe the different causes any better than Wikipedia does, so if you want to learn more, you should check out their [article about color blindness](#).

Dichromacy



Original Color

110.7930, 22.5120, -0.4960

Protanopia

109.4710, 11.5550, -5.6690

Deuteranopia

110.7820, 21.0450, -1.4430



Tritanopia

112.6650, 17.4210, 9.1730

Trichromacy



Original Color

110.7930, 22.5120, -0.4960

Protanomaly

109.6780, 15.4060, -3.8740

Deuteranomaly

111.0810, 21.6410, -1.2310

Tritanomaly

111.9270, 19.4390, 5.6390

Monochromacy



Original Color

110.7930, 22.5120, -0.4960

Achromatopsia

111.0000, -0.0000, 0.0000

Achromatomaly

111.1920, 8.2070, -0.0570

CSS Examples

Text

The CSS property to change the color of the text to YIQ 110.7930, 22.5120, -0.4960 is called "color". The color property can be set on classes, ids or directly on the HTML element.

This example shows how text in the color `rgb(132, 105, 85)` looks like.

```
.text, #text, p{  
    color:rgb(132, 105, 85)  
}
```

If you want to add a text shadow in that color use the text-shadow property, you can generate a text shadow directly with our [CSS Text Shadow Generator](#).

Here you see how black text with a 4 pixel rgb(132, 105, 85) colored shadow looks like.

```
.shadow{ text-shadow: 4px 4px 2px rgb(132, 105, 85) }
```

Border

The CSS property to change the border of an element to YIQ 110.7930, 22.5120, -0.4960 is called "border". The border property can be set on classes, ids or directly on the HTML element.

This example shows the color as border, it can be applied via the CSS property "border" or "border-color".

```
.border, #border, table{ border:4px solid rgb(132, 105, 85) }
```


If only the border color should be changed use the property `border-color`.

```
.border{ border-color:rgb(132, 105, 85) }
```

If you want to add a box shadow in that color use:

Here you see how a box with a 4 pixel `rgb(132, 105, 85)` colored shadow looks like.

```
.boxshadow{ -moz-box-shadow:4px 4px 4px  
4px rgb(132, 105, 85); -webkit-box-  
shadow:4px 4px 4px 4px rgb(132, 105, 85);  
box-shadow:4px 4px 4px 4px rgb(132, 105,  
85) }
```

Background

The CSS property to change the background color of an element to YIQ 110.7930, 22.5120, -0.4960 is called "background". The background property can be set on classes, ids or directly on the HTML element.

```
.background, #background, body{  
background: rgb(132, 105, 85) }
```

If only the background color should be changed can be used:

```
.background{ background-color: rgb(132,  
105, 85) }
```

This example shows the color as background, it is applied via the CSS property "background".

To optimize and compress your CSS code, you can use our [online CSS compressor and optimizer](#) based on csstidy. If you want to create a linear or radial gradient as background or border, check our [CSS Gradient Generator](#).

Hey! You found this booklet interesting? Support Converting Colors with the new Membership Option!

The pro membership hides all ads, plus gives you double the colors in the color bucket, and more awesome pro features!

[Learn more, Memberships starting at \\$2.50/m!](#)

**Follow me
on Twitter!**

@ConvertingColor