

# Converting Colors

YIQ(111.1670, 99.8940, 61.8940)

Have a look what the booklet for  
YIQ(111.1670, 99.8940, 61.8940)  
contains.

<b>YIQ(111.1670, 99.8940, 61.8940)</b> .....	3
<b><i>Conversions</i></b> .....	4
<b><i>Details</i></b> .....	6
<b><i>Harmonies</i></b> .....	12
<b><i>Previews</i></b> .....	24
<b><i>Color Blindness Simulation</i></b> .....	28
<b><i>CSS Examples</i></b> .....	31

**Color**

**YIQ(111.1670, 99.8940,  
61.8940)**

# Conversions

## Conversions Part 1

<b>Format</b>	<b>Color</b>
Hex	F52C6A
RGB	245, 44, 106
RGB Percent	96%, 17%, 42%
CMY	0.0387, 0.8277, 0.5840
CMYK	0.00, 0.82, 0.57, 0.04
HSL	341°, 91%, 57%
HSV	341°, 82%, 96%
XYZ	41.2059, 22.2737, 15.7874
YIQ	111.1670, 99.8940, 61.8940

# Conversions

## Conversions Part 2

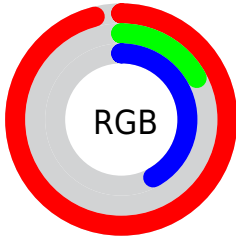
<b>Format</b>	<b>Color</b>
<b>R<sub>YB</sub></b>	245, 44, 106
Decimal	16067690
CIE <sub>Lab</sub>	54.32, 75.34, 16.16
CIE <sub>LCh</sub>	54, 77.050, 12.110
Yxy	22.2737, 0.5198, 0.2810
Android (android.graphics.Color)	4294257770 (0xFFFF52C6A)
YUV	111.1670, -2.5473, 117.3715
Hunter-Lab	47.1951, 73.2565, 13.2032

# Details

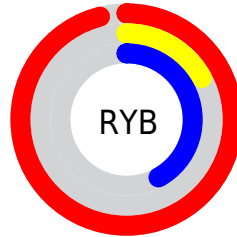
The YIQ color **111.1670, 99.8940, 61.8940** is a dark color, and the websafe version is hex **FF3366**. The color can be described as dark washed rose. A complement of this color would be **177.8330, -99.8940, -61.8940**, and the grayscale version is **111.0000, -0.0000, 0.0000**.

A 20% lighter version of the original color is **159.8870, 70.7830, 44.3110**, and **60.8450, 88.9370, 56.7210** is the 20% darker color. If you saturate the color by 10%, you get **94.5540, 112.2260, 69.6820**, and if you desaturate by 10%, it is **127.1930, 87.8370, 54.6290**.

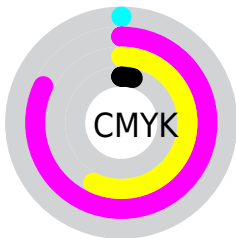
# Distribution



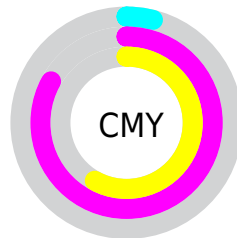
- Red (96%)
- Green (17%)
- Blue (42%)



- Red (96%)
- Yellow (17%)
- Blue (42%)



- Cyan (0%)
- Magenta (82%)
- Yellow (57%)
- Black (4%)



- Cyan (4%)
- Magenta (83%)
- Yellow (58%)

# Brightness & Saturation Gradients

These gradients show how the YIQ color 111.1670, 99.8940, 61.8940 changes by changing the brightness by 10 percent. The first figure shows a shift by +10% for each color and the second figure -10%.

Similar to the brightness gradients but the following saturation gradients show a change of the YIQ color 111.1670, 99.8940, 61.8940 by changing the saturation by 10% instead.



111.1670, 99.8940,  
61.8940

111.1670, 99.8940,  
61.8940

255.0000, -0.0000,  
-0.0000

73.0350, 100.6260,  
70.6580

159.8870, 70.7830,  
44.3110

61.2580, 89.2120,  
57.2440

180.5750, 53.8660,  
37.0180

49.1820, 77.2020,  
43.6180

201.2630, 36.9490,  
29.7250

37.7470, 64.8250,  
31.1370

222.1790, 19.3900,  
23.0540

26.9530, 52.0810,  
19.8010

241.4990, 6.3250,  
12.0290

17.5700, 33.9260,  
12.9180

5.3820, 10.7280,

3.8160

■ 0.0000, 0.0000,  
0.0000

■ 111.1670, 99.8940,  
61.8940

■ 111.1670, 99.8940,  
61.8940

■ 94.5540, 112.2260,  
69.6820

■ 127.1930, 87.8370,  
54.6290

■ 81.9190, 121.6240,  
75.5760


■ 143.8060, 75.5050,  
46.8410

■ 159.8320, 63.4480,  
39.5760


■ 176.4450, 51.1160,  
31.7880

■ 193.0580, 38.7840,  
24.0000

 209.0840, 26.7270,  
16.7350

 225.6970, 14.3950,  
8.9470

 241.7230, 2.3380,  
1.6820

 252.0100, -5.9600,  
-2.1200

# Harmonies

## Analogous

The Analogous color harmony consists of three colors that are next to each other on the color wheel.



121.5270, 64.1300, 71.2820



111.1670, 99.8940, 61.8940



119.0450, 101.5520, 20.8160

# Triad

The Triadic color harmony groups three colors that are evenly spaced from another and form a triangle on the color wheel.



111.1670, 99.8940, 61.8940



102.4130, -11.1750, -67.3270



116.5330, -122.8300, 1.3780

# Complementary

The Complementary color scheme is a pair of colors which are on the opposite of each other on the color wheel.



111.1670, 99.8940, 61.8940



177.8330, -99.8940, -61.8940

# Split Complementary

Split-complementary colors differ from the complementary color scheme. The scheme consists of three colors, the original color and two neighbors of the complement color.



117.0110, -113.1530, -14.3130



111.1670, 99.8940, 61.8940



101.3760, -70.5060, -54.8420

# Square

The Square scheme is like the rectangle color scheme, but the four colors are evenly spaced on the color wheel.



111.1670, 99.8940, 61.8940



119.5990, 41.8680, -42.9320



111.1170, -93.8010, -34.6410



104.7930, -117.3300, 11.8380



# Rectangle

The Rectangle color scheme consists of four colors that form a rectangle on the color wheel.



111.1670, 99.8940, 61.8940



120.5820, 94.4050, -9.3630



111.1170, -93.8010, -34.6410



117.4960, -121.4080, -2.3680

# Sweetspot

The Sweet Spot groups the original color and five complimentary colors.



111.1670, 99.8940, 61.8940



212.4160, 31.7240, 19.7880



107.8770, 17.1310, 91.5550



102.0290, 19.3920, 12.0000



0.0000, 0.0000, 0.0000



128.0000, -0.0000, -0.0000



# Same Dimension

The Same Dimension uses a secret algorithm to generate beautiful new colors.



111.1670, 99.8940, 61.8940



88.5280, 124.2830, 76.9470



125.8180, 109.6210, 23.2610



114.0440, 5.8680, 3.7880



62.2260, 92.2380, 57.4700



19.6930, 29.3860, 18.1060



# Inverse Universe

The Inverse Universe completely reimagines the original color for something new.



111.1670, 99.8940, 61.8940



88.5280, 124.2830, 76.9470



163.1820, -109.6210, -23.2610



114.0440, 5.8680, 3.7880



62.2260, 92.2380, 57.4700



19.6930, 29.3860, 18.1060



# Previews

## White Background



This preview shows how the YIQ color 111.1670, 99.8940, 61.8940 looks on a white background.

## Color Contrast Check

Large Text (above 18pt) WCAG AA ✓ Pass

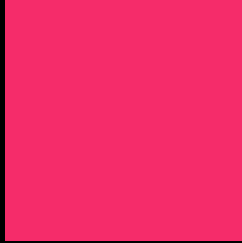
Any Text WCAG AA × Fail

Large Text (above 18pt) WCAG AAA × Fail

Any Text WCAG AAA × Fail



# Black Background



This preview shows how the YIQ color 111.1670, 99.8940, 61.8940 looks on a black background.

## Color Contrast Check

Large Text (above 18pt) WCAG AA ✓ Pass

Any Text WCAG AA ✓ Pass

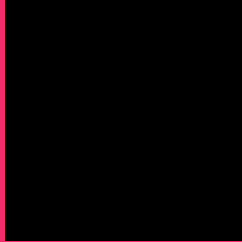
Large Text (above 18pt) WCAG AAA ✓ Pass

Any Text WCAG AAA × Fail

If you want to check with other color combinations, try the [Color Contrast Checker](#).

# YIQ 111.1670, 99.8940, 61.8940

## Background



This preview shows how black text looks on a background with the YIQ color 111.1670, 99.8940, 61.8940.



This preview shows how white text looks on a background with the YIQ color 111.1670, 99.8940,



# Color Blindness Simulation

Color vision deficiency is a very complex topic, and I could not describe the different causes any better than Wikipedia does, so if you want to learn more, you should check out their [article about color blindness](#).

## Dichromacy



### Original Color

111.1670, 99.8940, 61.8940

### Protanopia

130.7530, -6.3740, 5.3860

### Deuteranopia

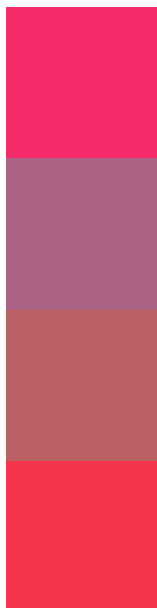
130.3650, 26.5930, -2.8710



## Tritanopia

112.7280, 110.5350, 39.7430

# Trichromacy



## Original Color

111.1670, 99.8940, 61.8940

## Protanomaly

123.7030, 32.5940, 26.0500

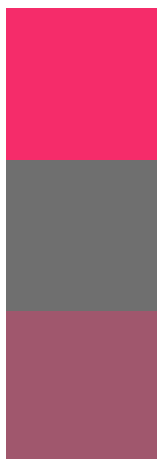
## Deuteranomaly

123.6650, 52.9520, 20.5360

## Tritanomaly

112.0300, 107.0490, 47.8570

# Monochromacy



## Original Color

111.1670, 99.8940, 61.8940

## Achromatopsia

111.0000, -0.0000, 0.0000

## Achromatomaly

111.3350, 36.4460, 22.3180

# CSS Examples

## Text

The CSS property to change the color of the text to YIQ 111.1670, 99.8940, 61.8940 is called "color". The color property can be set on classes, ids or directly on the HTML element.

This example shows how text in the color `rgb(245, 44, 106)` looks like.

```
.text, #text, p{  
    color:rgb(245, 44, 106)  
}
```

If you want to add a text shadow in that color use the text-shadow property, you can generate a text shadow directly with our [CSS Text Shadow Generator](#).

Here you see how black text with a 4 pixel rgb(245, 44, 106) colored shadow looks like.

```
.shadow{ text-shadow: 4px 4px 2px rgb(245, 44, 106) }
```

## Border

The CSS property to change the border of an element to YIQ 111.1670, 99.8940, 61.8940 is called "border". The border property can be set on classes, ids or directly on the HTML element.

This example shows the color as border, it can be applied via the CSS property "border" or "border-color".

```
.border, #border, table{ border:4px solid rgb(245, 44, 106) }
```



If only the border color should be changed use the property `border-color`.

```
.border{ border-color:rgb(245, 44, 106) }
```

If you want to add a box shadow in that color use:

Here you see how a box with a 4 pixel `rgb(245, 44, 106)` colored shadow looks like.

```
.boxshadow{ -moz-box-shadow:4px 4px 4px  
4px rgb(245, 44, 106); -webkit-box-  
shadow:4px 4px 4px 4px rgb(245, 44, 106);  
box-shadow:4px 4px 4px 4px rgb(245, 44,  
106) }
```

# Background

The CSS property to change the background color of an element to YIQ 111.1670, 99.8940, 61.8940 is called "background". The background property can be set on classes, ids or directly on the HTML element.

```
.background, #background, body{  
background: rgb(245, 44, 106) }
```

If only the background color should be changed can be used:

```
.background{ background-color: rgb(245, 44,  
106) }
```

This example shows the color as background, it is applied via the CSS property "background".

To optimize and compress your CSS code, you can use our [online CSS compressor and optimizer](#) based on csstidy. If you want to create a linear or radial gradient as background or border, check our [CSS Gradient Generator](#).

Hey! You found this booklet interesting? Support Converting Colors with the new Membership Option!

The pro membership hides all ads, plus gives you double the colors in the color bucket, and more awesome pro features!

**[Learn more, Memberships starting at \\$2.50/m!](#)**

**Follow me  
on Twitter!**

@ConvertingColor