

Converting Colors

YIQ(111.1830, 49.0980, 35.3220)

Have a look what the booklet for
YIQ(111.1830, 49.0980, 35.3220)
contains.

YIQ(111.1830, 49.0980, 35.3220)	3
<i>Conversions</i>	4
<i>Details</i>	6
<i>Harmonies</i>	12
<i>Previews</i>	24
<i>Color Blindness Simulation</i>	28
<i>CSS Examples</i>	31

Color

**YIQ(111.1830, 49.0980,
35.3220)**

Conversions

Conversions Part 1

Format	Color
Hex	B44B75
RGB	180, 75, 117
RGB Percent	71%, 29%, 46%
CMY	0.2938, 0.7060, 0.5410
CMYK	0.00, 0.58, 0.35, 0.29
HSL	336°, 41%, 50%
HSV	336°, 58%, 71%
XYZ	24.5652, 16.0233, 18.6405
YIQ	111.1830, 49.0980, 35.3220

Conversions

Conversions Part 2

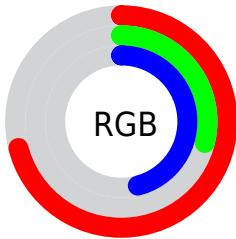
Format	Color
R_{YB}	180, 75, 117
Decimal	11815797
CIE Lab	47.00, 46.92, -2.42
CIE LCh	47, 46.980, 357.043
Yxy	16.0233, 0.4148, 0.2705
Android (android.graphics.Color)	4290005877 (0xFFB44B75)
YUV	111.1830, 2.8678, 60.3525
Hunter-Lab	40.0291, 39.4917, 0.4106

Details

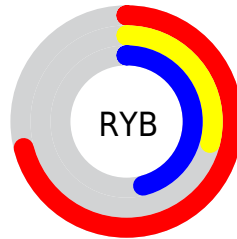
The YIQ color **111.1830, 49.0980, 35.3220** is a dark color, and the websafe version is hex **993366**. A complement of this color would be **143.8170, -49.0980, -35.3220**, and the grayscale version is **111.0000, -0.0000, 0.0000**.

A 20% lighter version of the original color is **165.8630, 52.9950, 36.2830**, and **55.5080, 46.8050, 38.3330** is the 20% darker color. If you saturate the color by 10%, you get **99.3630, 57.5790, 41.3150**, and if you desaturate by 10%, it is **123.0030, 40.6170, 29.3290**.

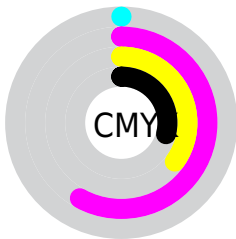
Distribution



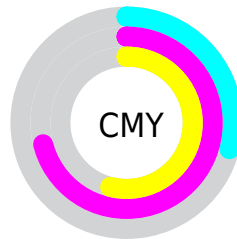
- Red (71%)
- Green (29%)
- Blue (46%)



- Red (71%)
- Yellow (29%)
- Blue (46%)



- Cyan (0%)
- Magenta (58%)
- Yellow (35%)
- Black (29%)



- Cyan (29%)
- Magenta (71%)
- Yellow (54%)

Brightness & Saturation Gradients

These gradients show how the YIQ color 111.1830, 49.0980, 35.3220 changes by changing the brightness by 10 percent. The first figure shows a shift by +10% for each color and the second figure -10%.

Similar to the brightness gradients but the following saturation gradients show a change of the YIQ color 111.1830, 49.0980, 35.3220 by changing the saturation by 10% instead.

■ 111.1830, 49.0980,
35.3220

■ 111.1830, 49.0980,
35.3220

255.0000, -0.0000,
-0.0000

■ 84.1120, 47.8600,
35.7320

■ 165.8630, 52.9950,
36.2830

■ 54.9210, 47.0800,
38.8560

■ 189.5740, 46.4390,
33.9510

■ 34.0620, 42.1290,
34.9690

■ 209.2020, 29.7510,
28.0150

■ 23.5950, 32.7780,
22.7140

■ 229.5310, 12.4670,
21.8670

■ 13.9820, 26.7740,
10.3740

■ 246.7820, 3.8500,
7.3220

■ 0.0000, 0.0000,
0.0000

111.1830, 49.0980,
35.3220

111.1830, 49.0980,
35.3220

99.3630, 57.5790,
41.3150

123.0030, 40.6170,
29.3290

87.5430, 66.0600,
47.3080

134.8230, 32.1360,
23.3360

75.8370, 74.2200,
53.6120

146.5290, 23.9760,
17.0320

64.0170, 82.7010,
59.6050

158.3490, 15.4950,
11.0390

62.0280, 84.1680,
60.5520


170.1690, 7.0140,
5.0460

181.9890, -1.4670,
-0.9470

193.8090, -9.9480,
-6.9400

205.5150,

-18.1080, -13.2440

 217.3350,
-26.5890, -19.2370

Harmonies

Analogous

The Analogous color harmony consists of three colors that are next to each other on the color wheel.



114.7960, 19.5710, 36.2990



111.1830, 49.0980, 35.3220



109.6830, 61.7090, 21.5250

Triad

The Triadic color harmony groups three colors that are evenly spaced from another and form a triangle on the color wheel.



111.1830, 49.0980, 35.3220



103.4330, 13.5770, -31.3110



94.1400, -91.4670, -10.8510

Complementary

The Complementary color scheme is a pair of colors which are on the opposite of each other on the color wheel.



111.1830, 49.0980, 35.3220



143.8170, -49.0980, -35.3220

Split Complementary

Split-complementary colors differ from the complementary color scheme. The scheme consists of three colors, the original color and two neighbors of the complement color.



92.9540, -82.6160, -22.5840



111.1830, 49.0980, 35.3220



94.6310, -31.0790, -36.9910

Square

The Square scheme is like the rectangle color scheme, but the four colors are evenly spaced on the color wheel.



111.1830, 49.0980, 35.3220



106.9100, 43.3310, -19.8770



88.3940, -69.7760, -35.0240



90.3390, -93.1650, -2.1010

Rectangle

The Rectangle color scheme consists of four colors that form a rectangle on the color wheel.



111.1830, 49.0980, 35.3220



109.6530, 61.2530, 7.7570



88.3940, -69.7760, -35.0240



94.2880, -89.1280, -14.6960

Sweetspot

The Sweet Spot groups the original color and five complimentary colors.



111.1830, 49.0980, 35.3220



206.7950, 20.1710, 14.4030



105.2090, 2.6510, 45.5870



100.0280, 11.9650, 8.9330



245.0000, -0.0000, 0.0000



117.0000, -0.0000, 0.0000

Same Dimension

The Same Dimension uses a secret algorithm to generate beautiful new colors.



111.1830, 49.0980, 35.3220



126.8590, 77.1540, 55.5060



111.6780, 60.1050, 17.5530



83.1470, 4.0800, 3.1520



52.7010, 71.6070, 51.4070



8.9140, 12.2860, 8.6220

Inverse Universe

The Inverse Universe completely reimagines the original color for something new.



111.1830, 49.0980, 35.3220



126.8590, 77.1540, 55.5060



143.3220, -60.1050, -17.5530



83.1470, 4.0800, 3.1520



52.7010, 71.6070, 51.4070



8.9140, 12.2860, 8.6220

Previews

White Background



This preview shows how the YIQ color 111.1830, 49.0980, 35.3220 looks on a white background.

Color Contrast Check

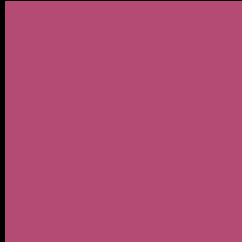
Large Text (above 18pt) WCAG AA ✓ Pass

Any Text WCAG AA ✓ Pass

Large Text (above 18pt) WCAG AAA ✓ Pass

Any Text WCAG AAA × Fail

Black Background



This preview shows how the YIQ color 111.1830, 49.0980, 35.3220 looks on a black background.

Color Contrast Check

Large Text (above 18pt) WCAG AA ✓ Pass

Any Text WCAG AA × Fail

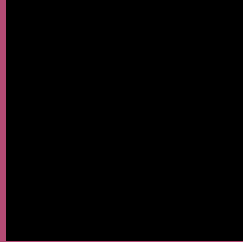
Large Text (above 18pt) WCAG AAA × Fail

Any Text WCAG AAA × Fail

If you want to check with other color combinations, try the [Color Contrast Checker](#).

YIQ 111.1830, 49.0980, 35.3220

Background



This preview shows how black text looks on a background with the YIQ color 111.1830, 49.0980, 35.3220.



This preview shows how white text looks on a background with the YIQ color 111.1830, 49.0980,

Color Blindness Simulation

Color vision deficiency is a very complex topic, and I could not describe the different causes any better than Wikipedia does, so if you want to learn more, you should check out their [article about color blindness](#).

Dichromacy



Original Color

111.1830, 49.0980, 35.3220

Protanopia

112.5120, -12.8850, 7.7470

Deuteranopia

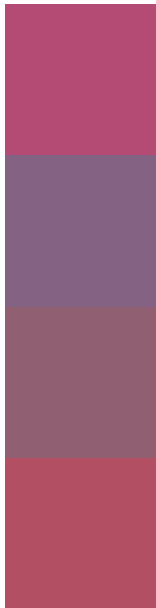
112.9410, 7.6560, 4.4240



Tritanopia

110.6870, 55.8860, 22.4300

Trichromacy



Original Color

111.1830, 49.0980, 35.3220

Protanomaly

112.0420, 9.3500, 17.7820

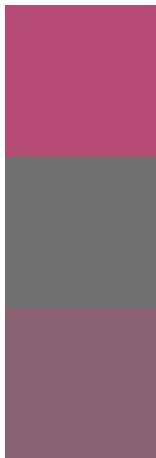
Deuteranomaly

112.4040, 22.8300, 15.7740

Tritanomaly

111.0660, 53.5010, 27.1090

Monochromacy



Original Color

111.1830, 49.0980, 35.3220

Achromatopsia

111.0000, -0.0000, 0.0000

Achromatomaly

111.0720, 17.8330, 12.7210

CSS Examples

Text

The CSS property to change the color of the text to YIQ 111.1830, 49.0980, 35.3220 is called "color". The color property can be set on classes, ids or directly on the HTML element.

This example shows how text in the color `rgb(180, 75, 117)` looks like.

```
.text, #text, p{  
    color:rgb(180, 75, 117)  
}
```

If you want to add a text shadow in that color use the text-shadow property, you can generate a text shadow directly with our [CSS Text Shadow Generator](#).

Here you see how black text with a 4 pixel rgb(180, 75, 117) colored shadow looks like.

```
.shadow{ text-shadow: 4px 4px 2px rgb(180, 75, 117) }
```

Border

The CSS property to change the border of an element to YIQ 111.1830, 49.0980, 35.3220 is called "border". The border property can be set on classes, ids or directly on the HTML element.

This example shows the color as border, it can be applied via the CSS property "border" or "border-color".

```
.border, #border, table{ border:4px solid rgb(180, 75, 117) }
```


If only the border color should be changed use the property `border-color`.

```
.border{ border-color:rgb(180, 75, 117) }
```

If you want to add a box shadow in that color use:

Here you see how a box with a 4 pixel `rgb(180, 75, 117)` colored shadow looks like.

```
.boxshadow{ -moz-box-shadow:4px 4px 4px  
4px rgb(180, 75, 117); -webkit-box-  
shadow:4px 4px 4px 4px rgb(180, 75, 117);  
box-shadow:4px 4px 4px 4px rgb(180, 75,  
117) }
```

Background

The CSS property to change the background color of an element to YIQ 111.1830, 49.0980, 35.3220 is called "background". The background property can be set on classes, ids or directly on the HTML element.

```
.background, #background, body{  
background: rgb(180, 75, 117) }
```

If only the background color should be changed can be used:

```
.background{ background-color: rgb(180, 75,  
117) }
```

This example shows the color as background, it is applied via the CSS property "background".

To optimize and compress your CSS code, you can use our [online CSS compressor and optimizer](#) based on csstidy. If you want to create a linear or radial gradient as background or border, check our [CSS Gradient Generator](#).

Hey! You found this booklet interesting? Support Converting Colors with the new Membership Option!

The pro membership hides all ads, plus gives you double the colors in the color bucket, and more awesome pro features!

[Learn more, Memberships starting at \\$2.50/m!](#)

**Follow me
on Twitter!**

@ConvertingColor