

Converting Colors

YIQ(112.1470, 76.2830, 54.7710)

Have a look what the booklet for
YIQ(112.1470, 76.2830, 54.7710)
contains.

YIQ(112.1470, 76.2830, 54.7710)	3
<i>Conversions</i>	4
<i>Details</i>	6
<i>Harmonies</i>	12
<i>Previews</i>	24
<i>Color Blindness Simulation</i>	28
<i>CSS Examples</i>	31

Color

**YIQ(112.1470, 76.2830,
54.7710)**

Conversions

Conversions Part 1

Format	Color
Hex	DB3879
RGB	219, 56, 121
RGB Percent	86%, 22%, 47%
CMY	0.1407, 0.7806, 0.5252
CMYK	0.00, 0.74, 0.45, 0.14
HSL	336°, 69%, 54%
HSV	336°, 74%, 86%
XYZ	34.1123, 19.2808, 20.0335
YIQ	112.1470, 76.2830, 54.7710

Conversions

Conversions Part 2

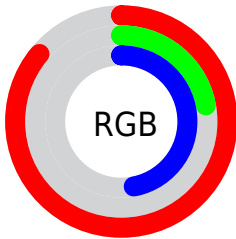
Format	Color
R_{YB}	219, 56, 121
Decimal	14366841
CIE _{Lab}	51.01, 66.47, 1.79
CIE _{LCh}	51, 66.497, 1.541
Yxy	19.2808, 0.4646, 0.2626
Android (android.graphics.Color)	4292556921 (0xFFDB3879)
YUV	112.1470, 4.3645, 93.7101
Hunter-Lab	43.9099, 61.8290, 3.6864

Details

The YIQ color **112.1470, 76.2830, 54.7710** is a dark color, and the websafe version is hex **CC3366**. The color can be described as dark muted rose. A complement of this color would be **162.8530, -76.2830, -54.7710**, and the grayscale version is **112.0000, -0.0000, 0.0000**.

A 20% lighter version of the original color is **164.0590, 64.5470, 47.1950**, and **55.5640, 70.7350, 56.1990** is the 20% darker color. If you saturate the color by 10%, you get **97.7510, 86.5060, 62.2340**, and if you desaturate by 10%, it is **126.5430, 66.0600, 47.3080**.

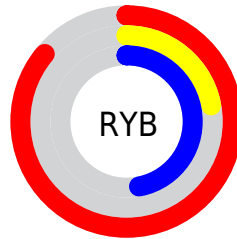
Distribution



Red (86%)

Green (22%)

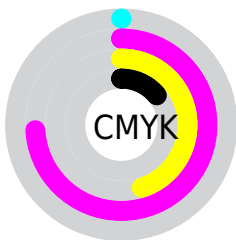
Blue (47%)



Red (86%)

Yellow (22%)

Blue (47%)

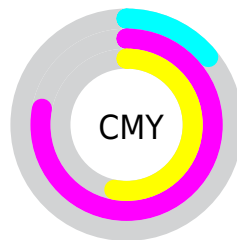


Cyan (0%)

Magenta (74%)

Yellow (45%)

Black (14%)



Cyan (14%)

Magenta (78%)

Yellow (53%)

Brightness & Saturation Gradients

These gradients show how the YIQ color 112.1470, 76.2830, 54.7710 changes by changing the brightness by 10 percent. The first figure shows a shift by +10% for each color and the second figure -10%.

Similar to the brightness gradients but the following saturation gradients show a change of the YIQ color 112.1470, 76.2830, 54.7710 by changing the saturation by 10% instead.

112.1470, 76.2830,
54.7710

112.1470, 76.2830,
54.7710

255.0000, -0.0000,
-0.0000

74.4990, 78.5280,
63.6480

164.0590, 64.5470,
47.1950

55.5640, 70.7350,
56.1990

184.1600, 47.9050,
40.4250

44.3850, 60.5130,
43.2090

204.3750, 30.9420,
33.9660

33.0210, 49.3740,
30.3180

224.4760, 14.3000,
27.1960

21.8700, 41.9490,
16.1970

242.0860, 6.0500,
11.5060

12.3730, 24.1150,
9.0030

0.0000, 0.0000,

0.0000

■ 112.1470, 76.2830,
54.7710

■ 112.1470, 76.2830,
54.7710

■ 97.7510, 86.5060,
62.2340

■ 126.5430, 66.0600,
47.3080

■ 83.3550, 96.7290,
69.6970

■ 140.9390, 55.8370,
39.8450

■ 75.3990, 102.5970,
73.4850

■ 155.4490, 45.2930,
32.6930

■ 169.8450, 35.0700,
25.2300

■ 183.6540, 25.1220,
18.2900

■ 198.0500, 14.8990,
10.8270

■ 212.4460, 4.6760,
3.3640

■ 226.8420, -5.5470,
-4.0990

■ 241.3520,
-16.0910, -11.2510

Harmonies

Analogous

The Analogous color harmony consists of three colors that are next to each other on the color wheel.



121.3120, 36.3940, 56.3140



112.1470, 76.2830, 54.7710



113.1980, 88.3000, 29.7080

Triad

The Triadic color harmony groups three colors that are evenly spaced from another and form a triangle on the color wheel.



112.1470, 76.2830, 54.7710



104.9590, 14.1310, -52.3730



107.9610, -109.7160, -5.0120

Complementary

The Complementary color scheme is a pair of colors which are on the opposite of each other on the color wheel.



112.1470, 76.2830, 54.7710



162.8530, -76.2830, -54.7710

Split Complementary

Split-complementary colors differ from the complementary color scheme. The scheme consists of three colors, the original color and two neighbors of the complement color.



106.2220, -97.9300, -20.3780



112.1470, 76.2830, 54.7710



91.2370, -59.8690, -54.8850

Square

The Square scheme is like the rectangle color scheme, but the four colors are evenly spaced on the color wheel.



112.1470, 76.2830, 54.7710



113.4960, 52.8240, -32.2320



100.3110, -79.9080, -38.6280



102.0400, -110.9560, 6.4520

Rectangle

The Rectangle color scheme consists of four colors that form a rectangle on the color wheel.



112.1470, 76.2830, 54.7710



114.5770, 84.7740, 5.4940



100.3110, -79.9080, -38.6280



107.8810, -106.7350, -9.4790

Sweetspot

The Sweet Spot groups the original color and five complimentary colors.



112.1470, 76.2830, 54.7710



218.2520, 26.3140, 18.7140



103.8840, 6.0850, 71.4690



105.7620, 15.7700, 11.5620



0.0000, 0.0000, 0.0000



128.0000, -0.0000, -0.0000

Same Dimension

The Same Dimension uses a secret algorithm to generate beautiful new colors.



112.1470, 76.2830, 54.7710



106.2470, 106.0810, 76.4250



114.1290, 92.7480, 26.1880



102.7450, 5.2720, 3.5760



59.5930, 80.9590, 58.1350



15.8060, 21.6380, 15.3500

Inverse Universe

The Inverse Universe completely reimagines the original color for something new.



112.1470, 76.2830, 54.7710



106.2470, 106.0810, 76.4250



160.8710, -92.7480, -26.1880



102.7450, 5.2720, 3.5760



59.5930, 80.9590, 58.1350



15.8060, 21.6380, 15.3500

Previews

White Background



This preview shows how the YIQ color 112.1470, 76.2830, 54.7710 looks on a white background.

Color Contrast Check

Large Text (above 18pt) WCAG AA ✓ Pass

Any Text WCAG AA × Fail

Large Text (above 18pt) WCAG AAA × Fail

Any Text WCAG AAA × Fail

Black Background



This preview shows how the YIQ color 112.1470, 76.2830, 54.7710 looks on a black background.

Color Contrast Check

Large Text (above 18pt) WCAG AA ✓ Pass

Any Text WCAG AA ✓ Pass

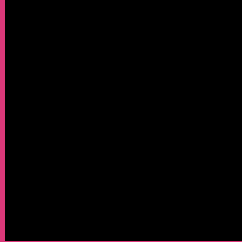
Large Text (above 18pt) WCAG AAA ✓ Pass

Any Text WCAG AAA × Fail

If you want to check with other color combinations, try the [Color Contrast Checker](#).

YIQ 112.1470, 76.2830, 54.7710

Background



This preview shows how black text looks on a background with the YIQ color 112.1470, 76.2830, 54.7710.



This preview shows how white text looks on a background with the YIQ color 112.1470, 76.2830,

Color Blindness Simulation

Color vision deficiency is a very complex topic, and I could not describe the different causes any better than Wikipedia does, so if you want to learn more, you should check out their [article about color blindness](#).

Dichromacy



Original Color

112.1470, 76.2830, 54.7710

Protanopia

122.7550, -17.8830, 10.2210

Deuteranopia

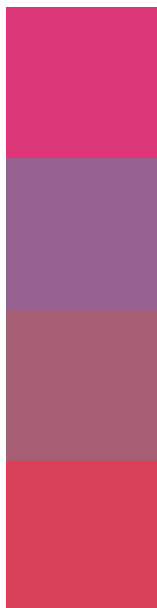
123.1110, 12.9290, 2.4730



Tritanopia

112.7080, 86.9240, 32.6200

Trichromacy



Original Color

112.1470, 76.2830, 54.7710

Protanomaly

118.7320, 16.4550, 26.6870

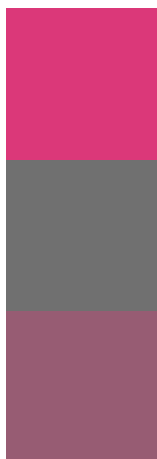
Deuteranomaly

118.9220, 36.1710, 21.7950

Tritanomaly

112.7110, 82.8420, 40.5220

Monochromacy



Original Color

112.1470, 76.2830, 54.7710

Achromatopsia

112.0000, -0.0000, 0.0000

Achromatomaly

112.2630, 27.7810, 19.6610

CSS Examples

Text

The CSS property to change the color of the text to YIQ 112.1470, 76.2830, 54.7710 is called "color". The color property can be set on classes, ids or directly on the HTML element.

This example shows how text in the color `rgb(219, 56, 121)` looks like.

```
.text, #text, p{  
    color:rgb(219, 56, 121)  
}
```

If you want to add a text shadow in that color use the text-shadow property, you can generate a text shadow directly with our [CSS Text Shadow Generator](#).

Here you see how black text with a 4 pixel rgb(219, 56, 121) colored shadow looks like.

```
.shadow{ text-shadow: 4px 4px 2px rgb(219, 56, 121) }
```

Border

The CSS property to change the border of an element to YIQ 112.1470, 76.2830, 54.7710 is called "border". The border property can be set on classes, ids or directly on the HTML element.

This example shows the color as border, it can be applied via the CSS property "border" or "border-color".

```
.border, #border, table{ border:4px solid rgb(219, 56, 121) }
```


If only the border color should be changed use the property `border-color`.

```
.border{ border-color:rgb(219, 56, 121) }
```

If you want to add a box shadow in that color use:

Here you see how a box with a 4 pixel `rgb(219, 56, 121)` colored shadow looks like.

```
.boxshadow{ -moz-box-shadow:4px 4px 4px  
4px rgb(219, 56, 121); -webkit-box-  
shadow:4px 4px 4px 4px rgb(219, 56, 121);  
box-shadow:4px 4px 4px 4px rgb(219, 56,  
121) }
```

Background

The CSS property to change the background color of an element to YIQ 112.1470, 76.2830, 54.7710 is called "background". The background property can be set on classes, ids or directly on the HTML element.

```
.background, #background, body{  
background: rgb(219, 56, 121) }
```

If only the background color should be changed can be used:

```
.background{ background-color: rgb(219, 56,  
121) }
```

This example shows the color as background, it is applied via the CSS property "background".

To optimize and compress your CSS code, you can use our [online CSS compressor and optimizer](#) based on csstidy. If you want to create a linear or radial gradient as background or border, check our [CSS Gradient Generator](#).

Hey! You found this booklet interesting? Support Converting Colors with the new Membership Option!

The pro membership hides all ads, plus gives you double the colors in the color bucket, and more awesome pro features!

[Learn more, Memberships starting at \\$2.50/m!](#)

**Follow me
on Twitter!**

@ConvertingColor