

Converting Colors

YIQ(112.7650, 19.7150, 0.6350)

Have a look what the booklet for
YIQ(112.7650, 19.7150, 0.6350)
contains.

YIQ(112.7650, 19.7150, 0.6350)	3
<i>Conversions</i>	4
<i>Details</i>	6
<i>Harmonies</i>	12
<i>Previews</i>	24
<i>Color Blindness Simulation</i>	28
<i>CSS Examples</i>	31

Color

**YIQ(112.7650, 19.7150,
0.6350)**

Conversions

Conversions Part 1

Format	Color
Hex	846B5C
RGB	132, 107, 92
RGB Percent	52%, 42%, 36%
CMY	0.4823, 0.5804, 0.6391
CMYK	0.00, 0.19, 0.30, 0.48
HSL	22°, 18%, 44%
HSV	22°, 30%, 52%
XYZ	16.7071, 16.1929, 12.3754
YIQ	112.7650, 19.7150, 0.6350

Conversions

Conversions Part 2

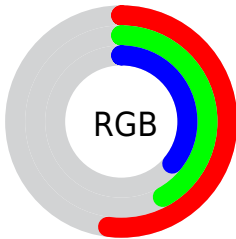
Format	Color
R_{YB}	132, 116, 92
Decimal	8678236
CIE _{Lab}	47.23, 7.56, 12.13
CIE _{LCh}	47, 14.293, 58.080
Yxy	16.1929, 0.3690, 0.3577
Android (android.graphics.Color)	4286868316 (0xFF846B5C)
YUV	112.7650, -10.2371, 16.8691
Hunter-Lab	40.2404, 3.6894, 9.9343

Details

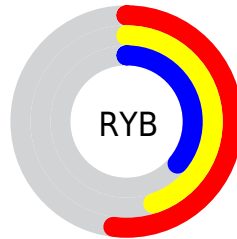
The YIQ color **112.7650, 19.7150, 0.6350** is a dark color, and the websafe version is hex **996666**. A complement of this color would be **111.2350, -19.7150, -0.6350**, and the grayscale version is **113.0000, -0.0000, 0.0000**.

A 20% lighter version of the original color is **164.5480, 21.8240, 0.9600**, and **64.9820, 17.6060, 0.3100** is the 20% darker color. If you saturate the color by 10%, you get **106.5870, 26.0880, 0.7760**, and if you desaturate by 10%, it is **118.9430, 13.3420, 0.4940**.

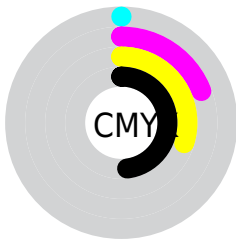
Distribution



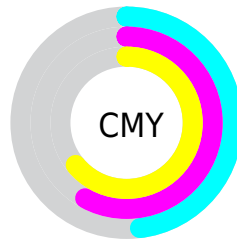
- Red (52%)
- Green (42%)
- Blue (36%)



- Red (52%)
- Yellow (45%)
- Blue (36%)



- Cyan (0%)
- Magenta (19%)
- Yellow (30%)
- Black (48%)



- Cyan (48%)
- Magenta (58%)
- Yellow (64%)

Brightness & Saturation Gradients

These gradients show how the YIQ color 112.7650, 19.7150, 0.6350 changes by changing the brightness by 10 percent. The first figure shows a shift by +10% for each color and the second figure -10%.

Similar to the brightness gradients but the following saturation gradients show a change of the YIQ color 112.7650, 19.7150, 0.6350 by changing the saturation by 10% instead.

■ 112.7650, 19.7150,
0.6350

■ 112.7650, 19.7150,
0.6350

255.0000, -0.0000,
-0.0000

■ 88.1670, 18.5230,
0.2110

■ 164.5480, 21.8240,
0.9600

■ 64.9820, 17.6060,
0.3100

■ 191.8470, 22.4200,
1.1720

■ 42.4980, 16.0930,
0.1970

■ 219.7330, 22.7410,
0.8610

■ 21.0420, 17.3770,
-1.0470

■ 243.2480, 13.8010,
-2.3190

■ 0.0000, 0.0000,
0.0000

254.7720, 0.6420,
-0.6220

■ 112.7650, 19.7150,
0.6350

■ 112.7650, 19.7150,
0.6350

■ 106.5870, 26.0880,
0.7760

■ 118.9430, 13.3420,
0.4940

■ 99.8220, 32.7360,
1.4400

■ 125.7080, 6.6940,
-0.1700

■ 93.5300, 39.4300,
1.2700

■ 132.0000, -0.0000,
-0.0000

■ 87.3520, 45.8030,
1.4110

■ 138.1780, -6.3730,
-0.1410

■ 81.1740, 52.1760,
1.5520

■ 144.3560,
-12.7460, -0.2820

■ 74.4090, 58.8240,
2.2160

■ 151.1210,
-19.3940, -0.9460

■ 68.2310, 65.1970,
2.3570

■ 157.2990,
-25.7670, -1.0870

■ 163.5910,

-32.4610, -0.9170

■ 169.7690,
-38.8340, -1.0580

Harmonies

Analogous

The Analogous color harmony consists of three colors that are next to each other on the color wheel.



113.5250, 20.6310, 6.0630



112.7650, 19.7150, 0.6350



111.6670, 13.9390, -4.8210

Triad

The Triadic color harmony groups three colors that are evenly spaced from another and form a triangle on the color wheel.



112.7650, 19.7150, 0.6350



107.6230, -18.2920, -9.9080



112.9320, -5.3200, 8.3120

Complementary

The Complementary color scheme is a pair of colors which are on the opposite of each other on the color wheel.



112.7650, 19.7150, 0.6350



111.2350, -19.7150, -0.6350

Split Complementary

Split-complementary colors differ from the complementary color scheme. The scheme consists of three colors, the original color and two neighbors of the complement color.



110.8380, -16.9190, 3.7610



112.7650, 19.7150, 0.6350



107.4960, -25.1240, -7.2360

Square

The Square scheme is like the rectangle color scheme, but the four colors are evenly spaced on the color wheel.



112.7650, 19.7150, 0.6350



108.9570, -7.6090, -10.7850



108.8430, -24.4830, -2.3310



114.4450, 6.4170, 10.3610

Rectangle

The Rectangle color scheme consists of four colors that form a rectangle on the color wheel.



112.7650, 19.7150, 0.6350



110.5630, 8.3000, -7.2520



108.8430, -24.4830, -2.3310



112.8390, -9.4920, 6.8280

Sweetspot

The Sweet Spot groups the original color and five complimentary colors.



112.7650, 19.7150, 0.6350



163.3060, 7.8860, 0.2540



106.8100, 15.8150, 16.2550



82.3380, 4.8600, 0.0280



214.0000, -0.0000, 0.0000



87.0000, -0.0000, -0.0000

Same Dimension

The Same Dimension uses a secret algorithm to generate beautiful new colors.



112.7650, 19.7150, 0.6350



141.0390, 30.6270, 1.1150



124.5050, 14.2150, -9.8250



62.9680, 3.0260, 0.2260



67.6330, 64.0050, 1.9330



1.4840, 1.5130, 0.1130

Inverse Universe

The Inverse Universe completely reimagines the original color for something new.



111.2350, -19.7150, -0.6350



138.9610, -30.6270, -1.1150



99.4950, -14.2150, 9.8250



63.0320, -3.0260, -0.2260



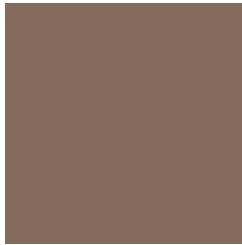
62.3670, -64.0050, -1.9330



1.5160, -1.5130, -0.1130

Previews

White Background



This preview shows how the YIQ color 112.7650, 19.7150, 0.6350 looks on a white background.

Color Contrast Check

Large Text (above 18pt) WCAG AA ✓ Pass

Any Text WCAG AA ✓ Pass

Large Text (above 18pt) WCAG AAA ✓ Pass

Any Text WCAG AAA × Fail

Black Background



This preview shows how the YIQ color 112.7650, 19.7150, 0.6350 looks on a black background.

Color Contrast Check

Large Text (above 18pt) WCAG AA ✓ Pass

Any Text WCAG AA × Fail

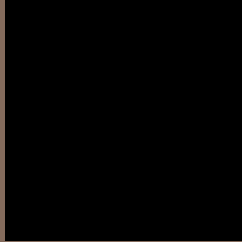
Large Text (above 18pt) WCAG AAA × Fail

Any Text WCAG AAA × Fail

If you want to check with other color combinations, try the [Color Contrast Checker](#).

YIQ 112.7650, 19.7150, 0.6350

Background



This preview shows how black text looks on a background with the YIQ color 112.7650, 19.7150, 0.6350.



This preview shows how white text looks on a background with the YIQ color 112.7650, 19.7150,

0.6350.

Color Blindness Simulation

Color vision deficiency is a very complex topic, and I could not describe the different causes any better than Wikipedia does, so if you want to learn more, you should check out their [article about color blindness](#).

Dichromacy



Original Color

112.7650, 19.7150, 0.6350

Protanopia

111.7420, 9.3540, -4.3260

Deuteranopia

112.7540, 18.2480, -0.3120



Tritanopia

113.8820, 15.3120, 8.8480

Trichromacy



Original Color

112.7650, 19.7150, 0.6350

Protanomaly

111.9490, 13.2050, -2.5310

Deuteranomaly

113.0530, 18.8440, -0.1000

Tritanomaly

113.3720, 16.6880, 5.9360

Monochromacy



Original Color

112.7650, 19.7150, 0.6350

Achromatopsia

113.0000, -0.0000, 0.0000

Achromatomaly

113.0070, 7.2900, 0.0420

CSS Examples

Text

The CSS property to change the color of the text to YIQ 112.7650, 19.7150, 0.6350 is called "color". The color property can be set on classes, ids or directly on the HTML element.

This example shows how text in the color `rgb(132, 107, 92)` looks like.

```
.text, #text, p{  
    color:rgb(132, 107, 92)  
}
```

If you want to add a text shadow in that color use the text-shadow property, you can generate a text shadow directly with our [CSS Text Shadow Generator](#).

Here you see how black text with a 4 pixel rgb(132, 107, 92) colored shadow looks like.

```
.shadow{ text-shadow: 4px 4px 2px rgb(132, 107, 92) }
```

Border

The CSS property to change the border of an element to YIQ 112.7650, 19.7150, 0.6350 is called "border". The border property can be set on classes, ids or directly on the HTML element.

This example shows the color as border, it can be applied via the CSS property "border" or "border-color".

```
.border, #border, table{ border:4px solid rgb(132, 107, 92) }
```


If only the border color should be changed use the property border-color.

```
.border{ border-color:rgb(132, 107, 92) }
```

If you want to add a box shadow in that color use:

Here you see how a box with a 4 pixel rgb(132, 107, 92) colored shadow looks like.

```
.boxshadow{ -moz-box-shadow:4px 4px 4px  
4px rgb(132, 107, 92); -webkit-box-  
shadow:4px 4px 4px 4px rgb(132, 107, 92);  
box-shadow:4px 4px 4px 4px rgb(132, 107,  
92) }
```

Background

The CSS property to change the background color of an element to YIQ 112.7650, 19.7150, 0.6350 is called "background". The background property can be set on classes, ids or directly on the HTML element.

```
.background, #background, body{  
background: rgb(132, 107, 92) }
```

If only the background color should be changed can be used:

```
.background{ background-color: rgb(132,  
107, 92) }
```

This example shows the color as background, it is applied via the CSS property "background".

To optimize and compress your CSS code, you can use our [online CSS compressor and optimizer](#) based on csstidy. If you want to create a linear or radial gradient as background or border, check our [CSS Gradient Generator](#).

Hey! You found this booklet interesting? Support Converting Colors with the new Membership Option!

The pro membership hides all ads, plus gives you double the colors in the color bucket, and more awesome pro features!

[Learn more, Memberships starting at \\$2.50/m!](#)

**Follow me
on Twitter!**

@ConvertingColor