

Converting Colors

YIQ(112.8470, 22.4200, 1.1720)

Have a look what the booklet for
YIQ(112.8470, 22.4200, 1.1720)
contains.

YIQ(112.8470, 22.4200, 1.1720)	3
<i>Conversions</i>	4
<i>Details</i>	6
<i>Harmonies</i>	12
<i>Previews</i>	24
<i>Color Blindness Simulation</i>	28
<i>CSS Examples</i>	31

Color

**YIQ(112.8470, 22.4200,
1.1720)**

Conversions

Conversions Part 1

Format	Color
Hex	876A5A
RGB	135, 106, 90
RGB Percent	53%, 42%, 35%
CMY	0.4705, 0.5843, 0.6470
CMYK	0.00, 0.21, 0.33, 0.47
HSL	21°, 20%, 44%
HSV	21°, 33%, 53%
XYZ	16.9934, 16.1963, 11.9092
YIQ	112.8470, 22.4200, 1.1720

Conversions

Conversions Part 2

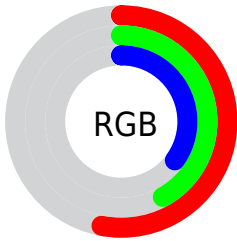
Format	Color
R_{YB}	135, 115, 90
Decimal	8874586
CIE Lab	47.23, 9.13, 13.37
CIE LCh	47, 16.191, 55.678
Yxy	16.1963, 0.3768, 0.3591
Android (android.graphics.Color)	4287064666 (0xFF876A5A)
YUV	112.8470, -11.2636, 19.4282
Hunter-Lab	40.2446, 4.9441, 10.6262

Details

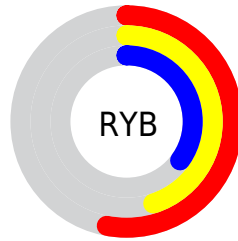
The YIQ color **112.8470, 22.4200, 1.1720** is a dark color, and the websafe version is hex **996666**. A complement of this color would be **112.1530, -22.4200, -1.1720**, and the grayscale version is **113.0000, -0.0000, 0.0000**.

A 20% lighter version of the original color is **164.6300, 24.5290, 1.4970**, and **64.7650, 19.7150, 0.6350** is the 20% darker color. If you saturate the color by 10%, you get **106.0820, 29.0680, 1.8360**, and if you desaturate by 10%, it is **119.7260, 15.4510, 0.8190**.

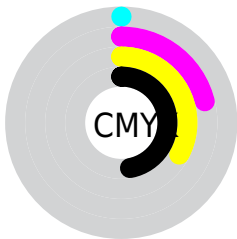
Distribution



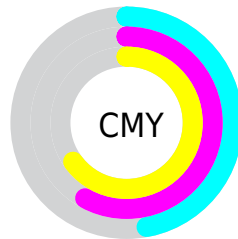
- Red (53%)
- Green (42%)
- Blue (35%)



- Red (53%)
- Yellow (45%)
- Blue (35%)



- Cyan (0%)
- Magenta (21%)
- Yellow (33%)
- Black (47%)



- Cyan (47%)
- Magenta (58%)
- Yellow (65%)

Brightness & Saturation Gradients

These gradients show how the YIQ color 112.8470, 22.4200, 1.1720 changes by changing the brightness by 10 percent. The first figure shows a shift by +10% for each color and the second figure -10%.

Similar to the brightness gradients but the following saturation gradients show a change of the YIQ color 112.8470, 22.4200, 1.1720 by changing the saturation by 10% instead.

■ 112.8470, 22.4200,
1.1720

■ 112.8470, 22.4200,
1.1720

■ 255.0000, -0.0000,
-0.0000

■ 88.3630, 20.9070,
1.0590

■ 164.6300, 24.5290,
1.4970

■ 64.7650, 19.7150,
0.6350

■ 191.9290, 25.1250,
1.7090

■ 42.3950, 17.8810,
0.8330

■ 220.1140, 26.0420,
1.6100

■ 21.6400, 18.5690,
-0.6230

■ 242.4330, 14.7180,
-2.4180

■ 0.0000, 0.0000,
0.0000

■ 254.4300, 1.6050,
-1.5550

■ 112.8470, 22.4200,
1.1720

■ 112.8470, 22.4200,
1.1720

■ 106.0820, 29.0680,
1.8360

■ 119.7260, 15.4510,
0.8190

■ 99.7900, 35.7620,
1.6660

■ 125.9040, 9.0780,
0.6780

■ 93.0250, 42.4100,
2.3300

■ 132.7830, 2.1090,
0.3250

■ 86.1460, 49.3790,
2.6830

■ 139.5480, -4.5390,
-0.3390

■ 79.3810, 56.0270,
3.3470

■ 146.4270,
-11.5080, -0.6920

■ 73.0890, 62.7210,
3.1770

■ 152.6050,
-17.8810, -0.8330

■ 68.5410, 67.2600,
3.5160

■ 159.4840,
-24.8500, -1.1860

■ 166.2490,

-31.4980, -1.8500

■ 172.5410,
-38.1920, -1.6800

Harmonies

Analogous

The Analogous color harmony consists of three colors that are next to each other on the color wheel.



113.8350, 22.6940, 7.2220



112.8470, 22.4200, 1.1720



111.3360, 16.3690, -4.8070

Triad

The Triadic color harmony groups three colors that are evenly spaced from another and form a triangle on the color wheel.



112.8470, 22.4200, 1.1720



107.0850, -19.7130, -11.6890



112.9750, -6.8790, 9.0330

Complementary

The Complementary color scheme is a pair of colors which are on the opposite of each other on the color wheel.



112.8470, 22.4200, 1.1720



112.1530, -22.4200, -1.1720

Split Complementary

Split-complementary colors differ from the complementary color scheme. The scheme consists of three colors, the original color and two neighbors of the complement color.



110.5710, -20.5410, 3.3230



112.8470, 22.4200, 1.1720



106.5880, -28.3790, -8.8190

Square

The Square scheme is like the rectangle color scheme, but the four colors are evenly spaced on the color wheel.



112.8470, 22.4200, 1.1720



108.3160, -7.2420, -11.9300



107.2770, -28.7010, -2.9810



114.4990, 6.3250, 12.0290

Rectangle

The Rectangle color scheme consists of four colors that form a rectangle on the color wheel.



112.8470, 22.4200, 1.1720



110.5200, 9.8590, -7.9730



107.2770, -28.7010, -2.9810



112.5830, -11.6470, 7.3370

Sweetspot

The Sweet Spot groups the original color and five complimentary colors.



112.8470, 22.4200, 1.1720



167.4910, 8.8030, 0.1550



106.7610, 17.5110, 18.5590



83.7510, 5.1350, 0.5510



217.0000, -0.0000, 0.0000



89.0000, -0.0000, -0.0000

Same Dimension

The Same Dimension uses a secret algorithm to generate beautiful new colors.



112.8470, 22.4200, 1.1720



141.6050, 34.8450, 1.7650



125.7610, 16.3700, -10.3340



62.9680, 3.0260, 0.2260



65.8720, 64.8300, 3.5020



1.4840, 1.5130, 0.1130

Inverse Universe

The Inverse Universe completely reimagines the original color for something new.



112.1530, -22.4200, -1.1720



140.3950, -34.8450, -1.7650



99.2390, -16.3700, 10.3340



63.0320, -3.0260, -0.2260



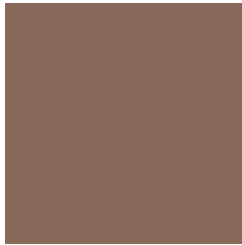
64.1280, -64.8300, -3.5020



1.5160, -1.5130, -0.1130

Previews

White Background



This preview shows how the YIQ color 112.8470, 22.4200, 1.1720 looks on a white background.

Color Contrast Check

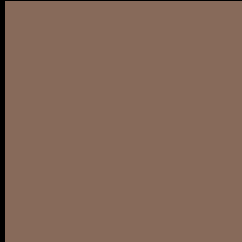
Large Text (above 18pt) WCAG AA ✓ Pass

Any Text WCAG AA ✓ Pass

Large Text (above 18pt) WCAG AAA ✓ Pass

Any Text WCAG AAA × Fail

Black Background



This preview shows how the YIQ color 112.8470, 22.4200, 1.1720 looks on a black background.

Color Contrast Check

Large Text (above 18pt) WCAG AA ✓ Pass

Any Text WCAG AA × Fail

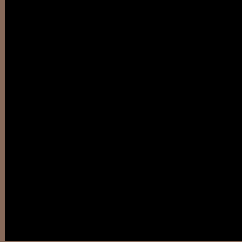
Large Text (above 18pt) WCAG AAA × Fail

Any Text WCAG AAA × Fail

If you want to check with other color combinations, try the [Color Contrast Checker](#).

YIQ 112.8470, 22.4200, 1.1720

Background



This preview shows how black text looks on a background with the YIQ color 112.8470, 22.4200, 1.1720.



This preview shows how white text looks on a background with the YIQ color 112.8470, 22.4200,

Color Blindness Simulation

Color vision deficiency is a very complex topic, and I could not describe the different causes any better than Wikipedia does, so if you want to learn more, you should check out their [article about color blindness](#).

Dichromacy



Original Color

112.8470, 22.4200, 1.1720

Protanopia

111.9270, 10.2710, -4.4250

Deuteranopia

112.8250, 19.4860, -0.7220



Tritanopia

114.0780, 17.6960, 9.6960

Trichromacy



Original Color

112.8470, 22.4200, 1.1720

Protanomaly

112.4330, 14.7180, -2.4180

Deuteranomaly

112.5370, 20.3570, 0.0130

Tritanomaly

113.4540, 19.3930, 6.4730

Monochromacy



Original Color

112.8470, 22.4200, 1.1720

Achromatopsia

113.0000, -0.0000, 0.0000

Achromatomaly

112.7190, 8.1610, 0.7770

CSS Examples

Text

The CSS property to change the color of the text to YIQ 112.8470, 22.4200, 1.1720 is called "color". The color property can be set on classes, ids or directly on the HTML element.

This example shows how text in the color `rgb(135, 106, 90)` looks like.

```
.text, #text, p{  
    color:rgb(135, 106, 90)  
}
```

If you want to add a text shadow in that color use the text-shadow property, you can generate a text shadow directly with our [CSS Text Shadow Generator](#).

Here you see how black text with a 4 pixel rgb(135, 106, 90) colored shadow looks like.

```
.shadow{ text-shadow: 4px 4px 2px rgb(135, 106, 90) }
```

Border

The CSS property to change the border of an element to YIQ 112.8470, 22.4200, 1.1720 is called "border". The border property can be set on classes, ids or directly on the HTML element.

This example shows the color as border, it can be applied via the CSS property "border" or "border-color".

```
.border, #border, table{ border:4px solid rgb(135, 106, 90) }
```


If only the border color should be changed use the property `border-color`.

```
.border{ border-color:rgb(135, 106, 90) }
```

If you want to add a box shadow in that color use:

Here you see how a box with a 4 pixel `rgb(135, 106, 90)` colored shadow looks like.

```
.boxshadow{ -moz-box-shadow:4px 4px 4px  
4px rgb(135, 106, 90); -webkit-box-  
shadow:4px 4px 4px 4px rgb(135, 106, 90);  
box-shadow:4px 4px 4px 4px rgb(135, 106,  
90) }
```

Background

The CSS property to change the background color of an element to YIQ 112.8470, 22.4200, 1.1720 is called "background". The background property can be set on classes, ids or directly on the HTML element.

```
.background, #background, body{  
background: rgb(135, 106, 90) }
```

If only the background color should be changed can be used:

```
.background{ background-color: rgb(135,  
106, 90) }
```

This example shows the color as background, it is applied via the CSS property "background".

To optimize and compress your CSS code, you can use our [online CSS compressor and optimizer](#) based on csstidy. If you want to create a linear or radial gradient as background or border, check our [CSS Gradient Generator](#).

Hey! You found this booklet interesting? Support Converting Colors with the new Membership Option!

The pro membership hides all ads, plus gives you double the colors in the color bucket, and more awesome pro features!

[Learn more, Memberships starting at \\$2.50/m!](#)

**Follow me
on Twitter!**

@ConvertingColor