

Converting Colors

YIQ(113.1500, 80.2280, 43.8440)

Have a look what the booklet for
YIQ(113.1500, 80.2280, 43.8440)
contains.

YIQ(113.1500, 80.2280, 43.8440)	3
<i>Conversions</i>	4
<i>Details</i>	6
<i>Harmonies</i>	12
<i>Previews</i>	24
<i>Color Blindness Simulation</i>	28
<i>CSS Examples</i>	31

Color

**YIQ(113.1500, 80.2280,
43.8440)**

Conversions

Conversions Part 1

Format	Color
Hex	D93F63
RGB	217, 63, 99
RGB Percent	85%, 25%, 39%
CMY	0.1486, 0.7532, 0.6115
CMYK	0.00, 0.71, 0.54, 0.15
HSL	346°, 67%, 55%
HSV	346°, 71%, 85%
XYZ	32.6744, 19.2170, 13.8101
YIQ	113.1500, 80.2280, 43.8440

Conversions

Conversions Part 2

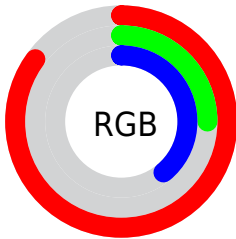
Format	Color
R_{YB}	217, 63, 99
Decimal	14237539
CIE Lab	50.94, 61.73, 14.93
CIE LCh	51, 63.506, 13.595
Yxy	19.2170, 0.4973, 0.2925
Android (android.graphics.Color)	4292427619 (0xFFD93F63)
YUV	113.1500, -6.9759, 91.0765
Hunter-Lab	43.8372, 56.3309, 12.0079

Details

The YIQ color **113.1500, 80.2280, 43.8440** is a dark color, and the websafe version is hex **CC3366**. The color can be described as dark muted rose. A complement of this color would be **166.8500, -80.2280, -43.8440**, and the grayscale version is **113.0000, -0.0000, 0.0000**.

A 20% lighter version of the original color is **164.2580, 70.8760, 37.1160**, and **52.6860, 75.9630, 49.5550** is the 20% darker color. If you saturate the color by 10%, you get **98.2980, 91.7350, 50.0630**, and if you desaturate by 10%, it is **128.0020, 68.7210, 37.6250**.

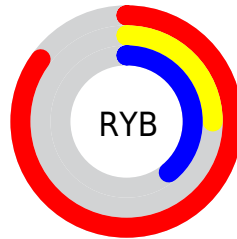
Distribution



Red (85%)

Green (25%)

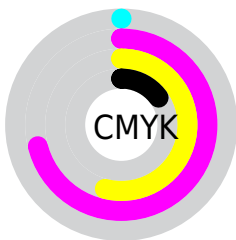
Blue (39%)



Red (85%)

Yellow (25%)

Blue (39%)

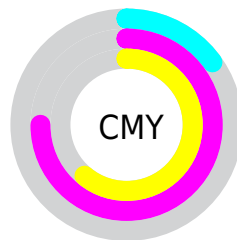


Cyan (0%)

Magenta (71%)

Yellow (54%)

Black (15%)



Cyan (15%)

Magenta (75%)

Yellow (61%)

Brightness & Saturation Gradients

These gradients show how the YIQ color 113.1500, 80.2280, 43.8440 changes by changing the brightness by 10 percent. The first figure shows a shift by +10% for each color and the second figure -10%.

Similar to the brightness gradients but the following saturation gradients show a change of the YIQ color 113.1500, 80.2280, 43.8440 by changing the saturation by 10% instead.

■ 113.1500, 80.2280,
43.8440

■ 113.1500, 80.2280,
43.8440

255.0000, -0.0000,
-0.0000

■ 80.6000, 79.0810,
48.1130

■ 164.3720, 70.5550,
37.4270

■ 52.6860, 75.9630,
49.5550

■ 183.7720, 54.5090,
30.8690

■ 41.3220, 64.8240,
36.6640

■ 203.9870, 37.5460,
24.4100

■ 29.7300, 54.3270,
23.1510

■ 224.2020, 20.5830,
17.9510

■ 20.9730, 40.1610,
15.5610

■ 244.4340, 4.9500,
9.4140

■ 10.8780, 21.1350,
7.9430

■ 0.0000, 0.0000,

0.0000

■ 113.1500, 80.2280,
43.8440

■ 113.1500, 80.2280,
43.8440

■ 98.2980, 91.7350,
50.0630

■ 128.0020, 68.7210,
37.6250

■ 84.1470, 102.6460,
56.0700

■ 142.1530, 57.8100,
31.6180

■ 70.6970, 112.9610,
61.8650

■ 157.0050, 46.3030,
25.3990

■ 171.8570, 34.7960,
19.1800

■ 186.0080, 23.8850,
13.1730

■ 200.8600, 12.3780,
6.9540

■ 215.5980, 1.1920,
0.4240

■ 230.4500,
-10.3150, -5.7950

■ 242.9540,
-20.7220, -9.9220

Harmonies

Analogous

The Analogous color harmony consists of three colors that are next to each other on the color wheel.



118.6420, 52.9000, 54.5320



113.1500, 80.2280, 43.8440



115.1890, 83.3510, 14.7670

Triad

The Triadic color harmony groups three colors that are evenly spaced from another and form a triangle on the color wheel.



113.1500, 80.2280, 43.8440



102.4090, -13.3790, -49.4030



105.5960, -109.9460, -0.8420

Complementary

The Complementary color scheme is a pair of colors which are on the opposite of each other on the color wheel.



113.1500, 80.2280, 43.8440



166.8500, -80.2280, -43.8440

Split Complementary

Split-complementary colors differ from the complementary color scheme. The scheme consists of three colors, the original color and two neighbors of the complement color.



106.7580, -102.1950, -14.6670



113.1500, 80.2280, 43.8440



94.6740, -68.1690, -47.6330

Square

The Square scheme is like the rectangle color scheme, but the four colors are evenly spaced on the color wheel.



113.1500, 80.2280, 43.8440



111.3260, 38.3830, -40.3450



102.2320, -86.6950, -31.2630



106.0110, -85.6490, 15.8790

Rectangle

The Rectangle color scheme consists of four colors that form a rectangle on the color wheel.



113.1500, 80.2280, 43.8440



114.5570, 78.3580, -10.3940



102.2320, -86.6950, -31.2630



106.4450, -108.2030, -4.8990

Sweetspot

The Sweet Spot groups the original color and five complimentary colors.



113.1500, 80.2280, 43.8440



218.6280, 28.0110, 15.4910



115.2400, 19.7020, 72.4860



106.3660, 16.8250, 8.9610



0.0000, 0.0000, 0.0000



128.0000, -0.0000, -0.0000

Same Dimension

The Same Dimension uses a secret algorithm to generate beautiful new colors.



113.1500, 80.2280, 43.8440



108.6970, 112.9610, 61.8650



131.3520, 81.3340, 12.7740



102.5170, 5.9140, 2.9540



56.4010, 89.9470, 49.4270



15.0080, 23.8850, 13.1730

Inverse Universe

The Inverse Universe completely reimagines the original color for something new.



113.1500, 80.2280, 43.8440



108.6970, 112.9610, 61.8650



148.6480, -81.3340, -12.7740



102.5170, 5.9140, 2.9540



56.4010, 89.9470, 49.4270



15.0080, 23.8850, 13.1730

Previews

White Background



This preview shows how the YIQ color 113.1500, 80.2280, 43.8440 looks on a white background.

Color Contrast Check

Large Text (above 18pt) WCAG AA ✓ Pass

Any Text WCAG AA × Fail

Large Text (above 18pt) WCAG AAA × Fail

Any Text WCAG AAA × Fail

Black Background



This preview shows how the YIQ color 113.1500, 80.2280, 43.8440 looks on a black background.

Color Contrast Check

Large Text (above 18pt) WCAG AA ✓ Pass

Any Text WCAG AA ✓ Pass

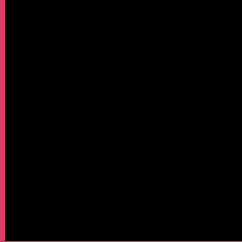
Large Text (above 18pt) WCAG AAA ✓ Pass

Any Text WCAG AAA × Fail

If you want to check with other color combinations, try the [Color Contrast Checker](#).

YIQ 113.1500, 80.2280, 43.8440

Background



This preview shows how black text looks on a background with the YIQ color 113.1500, 80.2280, 43.8440.



This preview shows how white text looks on a background with the YIQ color 113.1500, 80.2280,

Color Blindness Simulation

Color vision deficiency is a very complex topic, and I could not describe the different causes any better than Wikipedia does, so if you want to learn more, you should check out their [article about color blindness](#).

Dichromacy



Original Color

113.1500, 80.2280, 43.8440

Protanopia

122.0970, -1.6510, 2.3890

Deuteranopia

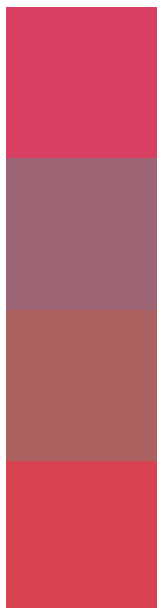
122.2230, 24.1170, -2.0510



Tritanopia

113.2950, 86.6490, 32.0970

Trichromacy



Original Color

113.1500, 80.2280, 43.8440

Protanomaly

118.9810, 28.5150, 17.3710

Deuteranomaly

118.8980, 44.7460, 15.0660

Tritanomaly

113.2610, 83.9890, 36.2530

Monochromacy



Original Color

113.1500, 80.2280, 43.8440

Achromatopsia

113.0000, -0.0000, 0.0000

Achromatomaly

113.2260, 29.2030, 15.9150

CSS Examples

Text

The CSS property to change the color of the text to YIQ 113.1500, 80.2280, 43.8440 is called "color". The color property can be set on classes, ids or directly on the HTML element.

This example shows how text in the color `rgb(217, 63, 99)` looks like.

```
.text, #text, p{  
    color:rgb(217, 63, 99)  
}
```

If you want to add a text shadow in that color use the text-shadow property, you can generate a text shadow directly with our [CSS Text Shadow Generator](#).

Here you see how black text with a 4 pixel rgb(217, 63, 99) colored shadow looks like.

```
.shadow{ text-shadow: 4px 4px 2px rgb(217, 63, 99) }
```

Border

The CSS property to change the border of an element to YIQ 113.1500, 80.2280, 43.8440 is called "border". The border property can be set on classes, ids or directly on the HTML element.

This example shows the color as border, it can be applied via the CSS property "border" or "border-color".

```
.border, #border, table{ border:4px solid rgb(217, 63, 99) }
```


If only the border color should be changed use the property `border-color`.

```
.border{ border-color:rgb(217, 63, 99) }
```

If you want to add a box shadow in that color use:

Here you see how a box with a 4 pixel `rgb(217, 63, 99)` colored shadow looks like.

```
.boxshadow{ -moz-box-shadow:4px 4px 4px  
4px rgb(217, 63, 99); -webkit-box-  
shadow:4px 4px 4px 4px rgb(217, 63, 99);  
box-shadow:4px 4px 4px 4px rgb(217, 63,  
99) }
```

Background

The CSS property to change the background color of an element to YIQ 113.1500, 80.2280, 43.8440 is called "background". The background property can be set on classes, ids or directly on the HTML element.

```
.background, #background, body{  
background: rgb(217, 63, 99) }
```

If only the background color should be changed can be used:

```
.background{ background-color: rgb(217, 63,  
99) }
```

This example shows the color as background, it is applied via the CSS property "background".

To optimize and compress your CSS code, you can use our [online CSS compressor and optimizer](#) based on csstidy. If you want to create a linear or radial gradient as background or border, check our [CSS Gradient Generator](#).

Hey! You found this booklet interesting? Support Converting Colors with the new Membership Option!

The pro membership hides all ads, plus gives you double the colors in the color bucket, and more awesome pro features!

[Learn more, Memberships starting at \\$2.50/m!](#)

**Follow me
on Twitter!**

@ConvertingColor