

Converting Colors

YIQ(114.0470, 45.3440, 4.2240)

Have a look what the booklet for
YIQ(114.0470, 45.3440, 4.2240)
contains.

YIQ(114.0470, 45.3440, 4.2240)	3
<i>Conversions</i>	4
<i>Details</i>	6
<i>Harmonies</i>	12
<i>Previews</i>	24
<i>Color Blindness Simulation</i>	28
<i>CSS Examples</i>	31

Color

**YIQ(114.0470, 45.3440,
4.2240)**

Conversions

Conversions Part 1

Format	Color
Hex	A06347
RGB	160, 99, 71
RGB Percent	63%, 39%, 28%
CMY	0.3724, 0.6118, 0.7214
CMYK	0.00, 0.38, 0.56, 0.37
HSL	19°, 39%, 45%
HSV	19°, 56%, 63%
XYZ	20.1021, 16.8513, 8.1630
YIQ	114.0470, 45.3440, 4.2240

Conversions

Conversions Part 2

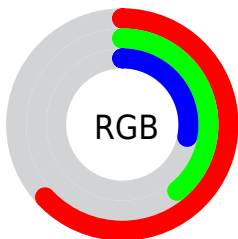
Format	Color
R_{YB}	160, 112, 71
Decimal	10511175
CIE _{Lab}	48.07, 21.73, 26.14
CIE _{LCh}	48, 33.988, 50.264
Yxy	16.8513, 0.4456, 0.3735
Android (android.graphics.Color)	4288701255 (0xFFA06347)
YUV	114.0470, -21.2222, 40.3008
Hunter-Lab	41.0504, 15.5721, 16.9452

Details

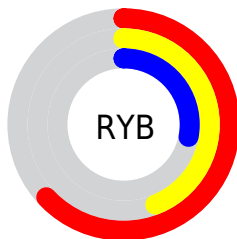
The YIQ color **114.0470, 45.3440, 4.2240** is a dark color, and the websafe version is hex **996633**. A complement of this color would be **116.9530, -45.3440, -4.2240**, and the grayscale version is **114.0000, 0.0000, 0.0000**.

A 20% lighter version of the original color is **166.6130, 49.5620, 4.8740**, and **64.2960, 40.2090, 3.6730** is the 20% darker color. If you saturate the color by 10%, you get **105.7660, 53.5050, 5.0010**, and if you desaturate by 10%, it is **122.3280, 37.1830, 3.4470**.

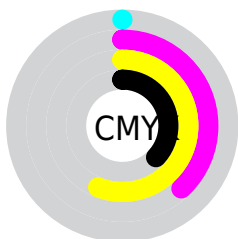
Distribution



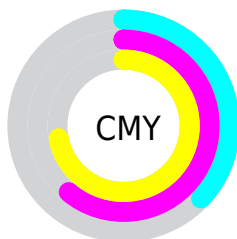
- Red (63%)
- Green (39%)
- Blue (28%)



- Red (63%)
- Yellow (44%)
- Blue (28%)



- Cyan (0%)
- Magenta (38%)
- Yellow (56%)
- Black (37%)



- Cyan (37%)
- Magenta (61%)
- Yellow (72%)

Brightness & Saturation Gradients

These gradients show how the YIQ color 114.0470, 45.3440, 4.2240 changes by changing the brightness by 10 percent. The first figure shows a shift by +10% for each color and the second figure -10%.

Similar to the brightness gradients but the following saturation gradients show a change of the YIQ color 114.0470, 45.3440, 4.2240 by changing the saturation by 10% instead.

■ 114.0470, 45.3440,
4.2240

■ 114.0470, 45.3440,
4.2240

■ 255.0000, -0.0000,
-0.0000

■ 88.9650, 42.6390,
3.6870

■ 166.6130, 49.5620,
4.8740

■ 64.4100, 39.8880,
3.9840

■ 194.3960, 51.6710,
5.1990

■ 40.8720, 38.4670,
2.2030

■ 216.1880, 40.3930,
0.3370

■ 19.6570, 29.0670,
7.3630

■ 235.8160, 23.7050,
-5.5990

■ 7.8880, 15.1750,
5.8230

■ 251.9220, 8.6670,
-8.3970

■ 0.0000, 0.0000,
0.0000

■ 114.0470, 45.3440,
4.2240

■ 114.0470, 45.3440,
4.2240

■ 105.7660, 53.5050,
5.0010

■ 122.3280, 37.1830,
3.4470

■ 97.4850, 61.6660,
5.7780

■ 130.6090, 29.0220,
2.6700

■ 89.2040, 69.8270,
6.5550

■ 138.8900, 20.8610,
1.8930

■ 80.9230, 77.9880,
7.3320

■ 147.1710, 12.7000,
1.1160

■ 77.1900, 81.6100,
7.7700

■ 155.4520, 4.5390,
0.3390

■ 163.7330, -3.6220,
-0.4380

■ 172.0140,
-11.7830, -1.2150

■ 180.2950,

-19.9440, -1.9920

■ 188.5760,
-28.1050, -2.7690

Harmonies

Analogous

The Analogous color harmony consists of three colors that are next to each other on the color wheel.



115.4790, 44.6080, 17.5680



114.0470, 45.3440, 4.2240



112.3410, 35.1680, -9.6000

Triad

The Triadic color harmony groups three colors that are evenly spaced from another and form a triangle on the color wheel.



114.0470, 45.3440, 4.2240



96.7450, -48.5950, -27.9150



114.2200, -23.3860, 16.3420

Complementary

The Complementary color scheme is a pair of colors which are on the opposite of each other on the color wheel.



114.0470, 45.3440, 4.2240



116.9530, -45.3440, -4.2240

Split Complementary

Split-complementary colors differ from the complementary color scheme. The scheme consists of three colors, the original color and two neighbors of the complement color.



103.2750, -60.7500, -0.3500



114.0470, 45.3440, 4.2240



90.8850, -78.1680, -26.1040

Square

The Square scheme is like the rectangle color scheme, but the four colors are evenly spaced on the color wheel.



114.0470, 45.3440, 4.2240



105.6600, -11.6870, -24.9910



91.8600, -85.0470, -17.0710



117.4860, 8.3400, 25.0760

Rectangle

The Rectangle color scheme consists of four colors that form a rectangle on the color wheel.



114.0470, 45.3440, 4.2240



110.9540, 22.8360, -17.3880



91.8600, -85.0470, -17.0710



112.0120, -34.6640, 11.4800

Sweetspot

The Sweet Spot groups the original color and five complimentary colors.



114.0470, 45.3440, 4.2240



190.9220, 17.8350, 1.6670



104.6790, 33.1420, 38.1500



93.8010, 10.8660, 1.3140



232.0000, -0.0000, 0.0000



105.0000, 0.0000, 0.0000

Same Dimension

The Same Dimension uses a secret algorithm to generate beautiful new colors.



114.0470, 45.3440, 4.2240



136.6880, 71.3400, 6.6680



139.2880, 33.5190, -18.2650



75.1530, 3.9430, 0.1270



69.1720, 72.8530, 6.7810



7.4200, 7.5650, 0.5650

Inverse Universe

The Inverse Universe completely reimagines the original color for something new.



116.9530, -45.3440, -4.2240



141.3120, -71.3400, -6.6680



91.7120, -33.5190, 18.2650



75.4340, -4.2180, -0.6500



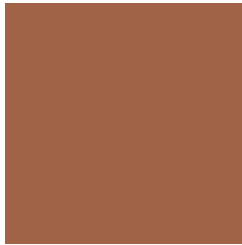
73.8280, -72.8530, -6.7810



7.5800, -7.5650, -0.5650

Previews

White Background



This preview shows how the YIQ color 114.0470, 45.3440, 4.2240 looks on a white background.

Color Contrast Check

Large Text (above 18pt) WCAG AA ✓ Pass

Any Text WCAG AA ✓ Pass

Large Text (above 18pt) WCAG AAA ✓ Pass

Any Text WCAG AAA × Fail

Black Background



This preview shows how the YIQ color 114.0470, 45.3440, 4.2240 looks on a black background.

Color Contrast Check

Large Text (above 18pt) WCAG AA ✓ Pass

Any Text WCAG AA × Fail

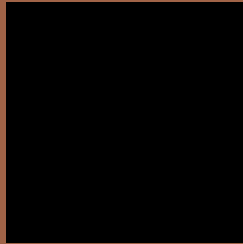
Large Text (above 18pt) WCAG AAA × Fail

Any Text WCAG AAA × Fail

If you want to check with other color combinations, try the [Color Contrast Checker](#).

YIQ 114.0470, 45.3440, 4.2240

Background



This preview shows how black text looks on a background with the YIQ color 114.0470, 45.3440, 4.2240.



This preview shows how white text looks on a background with the YIQ color 114.0470, 45.3440,

Color Blindness Simulation

Color vision deficiency is a very complex topic, and I could not describe the different causes any better than Wikipedia does, so if you want to learn more, you should check out their [article about color blindness](#).

Dichromacy



Original Color

114.0470, 45.3440, 4.2240

Protanopia

112.7720, 17.8370, -9.3870

Deuteranopia

113.4100, 30.7200, -6.0800



Tritanopia

115.8310, 37.6850, 16.3810

Trichromacy



Original Color

114.0470, 45.3440, 4.2240

Protanomaly

113.4960, 27.6020, -4.6380

Deuteranomaly

113.5680, 36.2670, -1.9810

Tritanomaly

114.8650, 40.3450, 12.2250

Monochromacy



Original Color

114.0470, 45.3440, 4.2240

Achromatopsia

114.0000, 0.0000, 0.0000

Achromatomaly

114.3240, 16.6430, 1.2430

CSS Examples

Text

The CSS property to change the color of the text to YIQ 114.0470, 45.3440, 4.2240 is called "color". The color property can be set on classes, ids or directly on the HTML element.

This example shows how text in the color `rgb(160, 99, 71)` looks like.

```
.text, #text, p{  
    color:rgb(160, 99, 71)  
}
```

If you want to add a text shadow in that color use the text-shadow property, you can generate a text shadow directly with our [CSS Text Shadow Generator](#).

Here you see how black text with a 4 pixel rgb(160, 99, 71) colored shadow looks like.

```
.shadow{ text-shadow: 4px 4px 2px rgb(160, 99, 71) }
```

Border

The CSS property to change the border of an element to YIQ 114.0470, 45.3440, 4.2240 is called "border". The border property can be set on classes, ids or directly on the HTML element.

This example shows the color as border, it can be applied via the CSS property "border" or "border-color".

```
.border, #border, table{ border:4px solid rgb(160, 99, 71) }
```


If only the border color should be changed use the property `border-color`.

```
.border{ border-color:rgb(160, 99, 71) }
```

If you want to add a box shadow in that color use:

Here you see how a box with a 4 pixel `rgb(160, 99, 71)` colored shadow looks like.

```
.boxshadow{ -moz-box-shadow:4px 4px 4px  
4px rgb(160, 99, 71); -webkit-box-  
shadow:4px 4px 4px 4px rgb(160, 99, 71);  
box-shadow:4px 4px 4px 4px rgb(160, 99,  
71) }
```

Background

The CSS property to change the background color of an element to YIQ 114.0470, 45.3440, 4.2240 is called "background". The background property can be set on classes, ids or directly on the HTML element.

```
.background, #background, body{  
background: rgb(160, 99, 71) }
```

If only the background color should be changed can be used:

```
.background{ background-color: rgb(160, 99,  
71) }
```

This example shows the color as background, it is applied via the CSS property "background".

To optimize and compress your CSS code, you can use our [online CSS compressor and optimizer](#) based on csstidy. If you want to create a linear or radial gradient as background or border, check our [CSS Gradient Generator](#).

Hey! You found this booklet interesting? Support Converting Colors with the new Membership Option!

The pro membership hides all ads, plus gives you double the colors in the color bucket, and more awesome pro features!

[Learn more, Memberships starting at \\$2.50/m!](#)

**Follow me
on Twitter!**

@ConvertingColor