

Converting Colors

YIQ(114.2890, 78.7590, 53.9510)

Have a look what the booklet for
YIQ(114.2890, 78.7590, 53.9510)
contains.

YIQ(114.2890, 78.7590, 53.9510)	3
<i>Conversions</i>	4
<i>Details</i>	6
<i>Harmonies</i>	12
<i>Previews</i>	24
<i>Color Blindness Simulation</i>	28
<i>CSS Examples</i>	31

Color

**YIQ(114.2890, 78.7590,
53.9510)**

Conversions

Conversions Part 1

Format	Color
Hex	DF3A77
RGB	223, 58, 119
RGB Percent	87%, 23%, 47%
CMY	0.1251, 0.7728, 0.5331
CMYK	0.00, 0.74, 0.47, 0.13
HSL	338°, 72%, 55%
HSV	338°, 74%, 87%
XYZ	35.3087, 20.0581, 19.4847
YIQ	114.2890, 78.7590, 53.9510

Conversions

Conversions Part 2

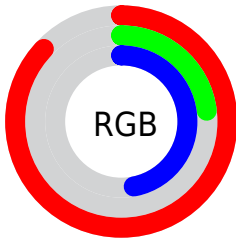
Format	Color
R_{YB}	223, 58, 119
Decimal	14629495
CIE Lab	51.90, 66.75, 4.37
CIE LCh	52, 66.891, 3.745
Yxy	20.0581, 0.4717, 0.2680
Android (android.graphics.Color)	4292819575 (0xFFDF3A77)
YUV	114.2890, 2.3225, 95.3395
Hunter-Lab	44.7863, 62.3502, 5.5557

Details

The YIQ color **114.2890, 78.7590, 53.9510** is a dark color, and the websafe version is hex **CC3366**. The color can be described as dark muted rose. A complement of this color would be **166.7110, -78.7590, -53.9510**, and the grayscale version is **114.0000, 0.0000, 0.0000**.

A 20% lighter version of the original color is **165.0050, 64.6390, 45.5270**, and **56.5320, 73.7610, 56.4250** is the 20% darker color. If you saturate the color by 10%, you get **99.7790, 89.3030, 61.1030**, and if you desaturate by 10%, it is **128.7990, 68.2150, 46.7990**.

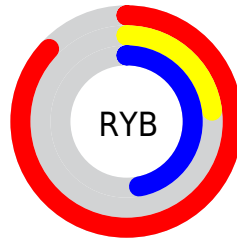
Distribution



Red (87%)

Green (23%)

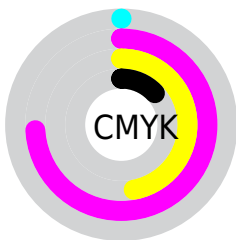
Blue (47%)



Red (87%)

Yellow (23%)

Blue (47%)

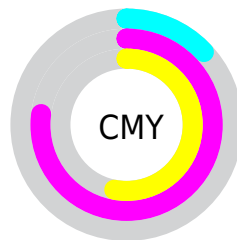


Cyan (0%)

Magenta (74%)

Yellow (47%)

Black (13%)



Cyan (13%)

Magenta (77%)

Yellow (53%)

Brightness & Saturation Gradients

These gradients show how the YIQ color 114.2890, 78.7590, 53.9510 changes by changing the brightness by 10 percent. The first figure shows a shift by +10% for each color and the second figure -10%.

Similar to the brightness gradients but the following saturation gradients show a change of the YIQ color 114.2890, 78.7590, 53.9510 by changing the saturation by 10% instead.

■ 114.2890, 78.7590,
53.9510

■ 114.2890, 78.7590,
53.9510

■ 255.0000, -0.0000,
-0.0000

■ 77.6300, 79.5370,
61.8810

■ 165.0050, 64.6390,
45.5270

■ 56.5320, 73.7610,
56.4250

■ 185.1060, 47.9970,
38.7570

■ 45.0540, 62.9430,
43.2230

■ 205.3210, 31.0340,
32.2980

■ 33.8040, 51.4830,
30.6430

■ 226.2370, 13.4750,
25.6270

■ 22.7670, 43.7370,
16.8330

■ 243.2600, 5.5000,
10.4600

■ 13.2700, 25.9030,
9.6390

■ 0.0000, 0.0000,

0.0000

■ 114.2890, 78.7590,
53.9510

■ 114.2890, 78.7590,
53.9510

■ 99.7790, 89.3030,
61.1030

■ 128.7990, 68.2150,
46.7990

■ 84.6820, 100.1220,
68.7780

■ 143.8960, 57.3960,
39.1240

■ 76.1390, 106.2650,
73.0890

■ 158.4060, 46.8520,
31.9720

■ 172.9160, 36.3080,
24.8200

■ 187.4260, 25.7640,
17.6680

■ 202.5230, 14.9450,
9.9930

■ 217.0330, 4.4010,
2.8410

■ 231.6570, -6.4640,
-4.0000

■ 244.4060,
-16.1830, -9.5830

Harmonies

Analogous

The Analogous color harmony consists of three colors that are next to each other on the color wheel.



122.9920, 40.2910, 57.2750



114.2890, 78.7590, 53.9510



115.8020, 89.3550, 27.1070

Triad

The Triadic color harmony groups three colors that are evenly spaced from another and form a triangle on the color wheel.



114.2890, 78.7590, 53.9510



105.8230, 11.5180, -54.5780



109.8190, -112.1920, -4.1920

Complementary

The Complementary color scheme is a pair of colors which are on the opposite of each other on the color wheel.



114.2890, 78.7590, 53.9510



166.7110, -78.7590, -53.9510

Split Complementary

Split-complementary colors differ from the complementary color scheme. The scheme consists of three colors, the original color and two neighbors of the complement color.



108.6670, -100.6810, -20.0810



114.2890, 78.7590, 53.9510



93.6820, -62.6200, -54.5880

Square

The Square scheme is like the rectangle color scheme, but the four colors are evenly spaced on the color wheel.



114.2890, 78.7590, 53.9510



115.5450, 51.1280, -34.5360



102.2830, -82.7050, -37.4970



102.9690, -112.1940, 6.8620

Rectangle

The Rectangle color scheme consists of four colors that form a rectangle on the color wheel.



114.2890, 78.7590, 53.9510



116.8820, 85.2330, 2.6810



102.2830, -82.7050, -37.4970



109.7390, -109.2110, -8.6590

Sweetspot

The Sweet Spot groups the original color and five complimentary colors.



114.2890, 78.7590, 53.9510



218.1380, 26.6350, 18.4030



107.3080, 7.8270, 72.9390



105.6480, 16.0910, 11.2510



0.0000, 0.0000, 0.0000



128.0000, -0.0000, -0.0000

Same Dimension

The Same Dimension uses a secret algorithm to generate beautiful new colors.



114.2890, 78.7590, 53.9510



105.4490, 108.3280, 74.2480



118.4880, 93.1150, 25.0430



104.7450, 5.2720, 3.5760



60.0340, 84.0310, 57.5270



16.4040, 22.8300, 15.7740

Inverse Universe

The Inverse Universe completely reimagines the original color for something new.



114.2890, 78.7590, 53.9510



105.4490, 108.3280, 74.2480



162.5120, -93.1150, -25.0430



104.7450, 5.2720, 3.5760



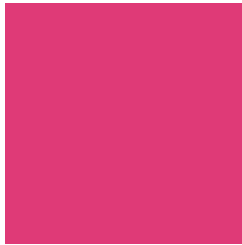
60.0340, 84.0310, 57.5270



16.4040, 22.8300, 15.7740

Previews

White Background



This preview shows how the YIQ color 114.2890, 78.7590, 53.9510 looks on a white background.

Color Contrast Check

Large Text (above 18pt) WCAG AA ✓ Pass

Any Text WCAG AA × Fail

Large Text (above 18pt) WCAG AAA × Fail

Any Text WCAG AAA × Fail

Black Background



This preview shows how the YIQ color 114.2890, 78.7590, 53.9510 looks on a black background.

Color Contrast Check

Large Text (above 18pt) WCAG AA ✓ Pass

Any Text WCAG AA ✓ Pass

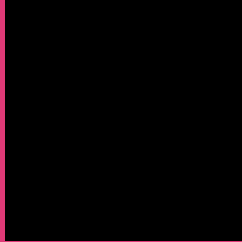
Large Text (above 18pt) WCAG AAA ✓ Pass

Any Text WCAG AAA × Fail

If you want to check with other color combinations, try the [Color Contrast Checker](#).

YIQ 114.2890, 78.7590, 53.9510

Background



This preview shows how black text looks on a background with the YIQ color 114.2890, 78.7590, 53.9510.



This preview shows how white text looks on a background with the YIQ color 114.2890, 78.7590,

Color Blindness Simulation

Color vision deficiency is a very complex topic, and I could not describe the different causes any better than Wikipedia does, so if you want to learn more, you should check out their [article about color blindness](#).

Dichromacy



Original Color

114.2890, 78.7590, 53.9510

Protanopia

124.7830, -15.0860, 9.0900

Deuteranopia

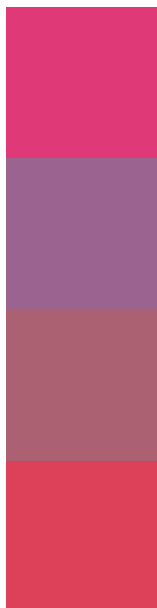
125.2530, 15.4050, 1.6530



Tritanopia

114.6050, 88.7120, 33.2560

Trichromacy



Original Color

114.2890, 78.7590, 53.9510

Protanomaly

120.7600, 19.2520, 25.5560

Deuteranomaly

121.0640, 38.6470, 20.9750

Tritanomaly

114.4940, 84.9510, 40.8470

Monochromacy



Original Color

114.2890, 78.7590, 53.9510

Achromatopsia

114.0000, 0.0000, 0.0000

Achromatomaly

114.4480, 28.6980, 19.5620

CSS Examples

Text

The CSS property to change the color of the text to YIQ 114.2890, 78.7590, 53.9510 is called "color". The color property can be set on classes, ids or directly on the HTML element.

This example shows how text in the color `rgb(223, 58, 119)` looks like.

```
.text, #text, p{  
    color:rgb(223, 58, 119)  
}
```

If you want to add a text shadow in that color use the text-shadow property, you can generate a text shadow directly with our [CSS Text Shadow Generator](#).

Here you see how black text with a 4 pixel rgb(223, 58, 119) colored shadow looks like.

```
.shadow{ text-shadow: 4px 4px 2px rgb(223, 58, 119) }
```

Border

The CSS property to change the border of an element to YIQ 114.2890, 78.7590, 53.9510 is called "border". The border property can be set on classes, ids or directly on the HTML element.

This example shows the color as border, it can be applied via the CSS property "border" or "border-color".

```
.border, #border, table{ border:4px solid rgb(223, 58, 119) }
```


If only the border color should be changed use the property border-color.

```
.border{ border-color:rgb(223, 58, 119) }
```

If you want to add a box shadow in that color use:

Here you see how a box with a 4 pixel rgb(223, 58, 119) colored shadow looks like.

```
.boxshadow{ -moz-box-shadow:4px 4px 4px  
4px rgb(223, 58, 119); -webkit-box-  
shadow:4px 4px 4px 4px rgb(223, 58, 119);  
box-shadow:4px 4px 4px 4px rgb(223, 58,  
119) }
```

Background

The CSS property to change the background color of an element to YIQ 114.2890, 78.7590, 53.9510 is called "background". The background property can be set on classes, ids or directly on the HTML element.

```
.background, #background, body{  
background: rgb(223, 58, 119) }
```

If only the background color should be changed can be used:

```
.background{ background-color: rgb(223, 58,  
119) }
```

This example shows the color as background, it is applied via the CSS property "background".

To optimize and compress your CSS code, you can use our [online CSS compressor and optimizer](#) based on csstidy. If you want to create a linear or radial gradient as background or border, check our [CSS Gradient Generator](#).

Hey! You found this booklet interesting? Support Converting Colors with the new Membership Option!

The pro membership hides all ads, plus gives you double the colors in the color bucket, and more awesome pro features!

[Learn more, Memberships starting at \\$2.50/m!](#)

**Follow me
on Twitter!**

@ConvertingColor