

Converting Colors

YIQ(114.3560, 13.6170, 1.0170)

Have a look what the booklet for
YIQ(114.3560, 13.6170, 1.0170)
contains.

YIQ(114.3560, 13.6170, 1.0170)	3
<i>Conversions</i>	4
<i>Details</i>	6
<i>Harmonies</i>	12
<i>Previews</i>	24
<i>Color Blindness Simulation</i>	28
<i>CSS Examples</i>	31

Color

**YIQ(114.3560, 13.6170,
1.0170)**

Conversions

Conversions Part 1

Format	Color
Hex	806E65
RGB	128, 110, 101
RGB Percent	50%, 43%, 40%
CMY	0.4980, 0.5686, 0.6039
CMYK	0.00, 0.14, 0.21, 0.50
HSL	20°, 12%, 45%
HSV	20°, 21%, 50%
XYZ	16.8284, 16.6800, 14.6485
YIQ	114.3560, 13.6170, 1.0170

Conversions

Conversions Part 2

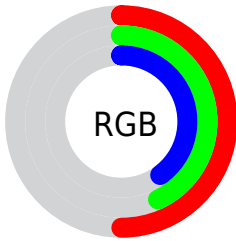
Format	Color
RYB	128, 115, 101
Decimal	8416869
CIELab	47.85, 5.53, 7.61
CIELCh	48, 9.408, 54.019
Yxy	16.6800, 0.3494, 0.3464
Android (android.graphics.Color)	4286606949 (0xFF806E65)
YUV	114.3560, -6.5845, 11.9658
Hunter-Lab	40.8412, 2.0776, 7.3233

Details

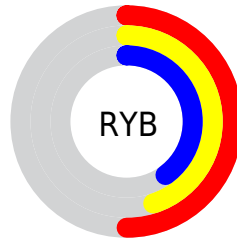
The YIQ color **114.3560, 13.6170, 1.0170** is a dark color, and the websafe version is hex **666666**. A complement of this color would be **114.6440, -13.6170, -1.0170**, and the grayscale version is **114.0000, 0.0000, 0.0000**.

A 20% lighter version of the original color is **166.5410, 14.5340, 0.9180**, and **65.8720, 12.1040, 0.9040** is the 20% darker color. If you saturate the color by 10%, you get **107.5910, 20.2650, 1.6810**, and if you desaturate by 10%, it is **121.1210, 6.9690, 0.3530**.

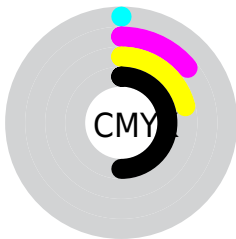
Distribution



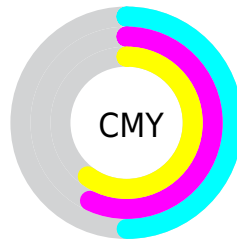
- Red (50%)
- Green (43%)
- Blue (40%)



- Red (50%)
- Yellow (45%)
- Blue (40%)



- Cyan (0%)
- Magenta (14%)
- Yellow (21%)
- Black (50%)



- Cyan (50%)
- Magenta (57%)
- Yellow (60%)

Brightness & Saturation Gradients

These gradients show how the YIQ color 114.3560, 13.6170, 1.0170 changes by changing the brightness by 10 percent. The first figure shows a shift by +10% for each color and the second figure -10%.

Similar to the brightness gradients but the following saturation gradients show a change of the YIQ color 114.3560, 13.6170, 1.0170 by changing the saturation by 10% instead.

■ 114.3560, 13.6170,
1.0170

■ 114.3560, 13.6170,
1.0170

255.0000, -0.0000,
-0.0000

■ 90.0570, 13.0210,
0.8050

■ 166.5410, 14.5340,
0.9180

■ 65.8720, 12.1040,
0.9040

■ 193.8400, 15.1300,
1.1300

■ 44.2740, 10.9120,
0.4800

■ 221.1390, 15.7260,
1.3420

■ 23.0460, 11.5540,
-0.1420

■ 246.7360, 9.4910,
-1.3010

■ 0.0000, 0.0000,
0.0000

■ 114.3560, 13.6170,

■ 114.3560, 13.6170,

1.0170

1.0170

■ 107.5910, 20.2650,
1.6810

■ 121.1210, 6.9690,
0.3530

■ 101.4130, 26.6380,
1.8220

■ 127.2990, 0.5960,
0.2120

■ 94.7620, 32.9650,
2.7970

■ 133.9500, -5.7310,
-0.7630

■ 88.5840, 39.3380,
2.9380

■ 140.1280,
-12.1040, -0.9040

■ 81.8190, 45.9860,
3.6020

■ 146.8930,
-18.7520, -1.5680

■ 75.6410, 52.3590,
3.7430

■ 153.0710,
-25.1250, -1.7090

■ 68.8760, 59.0070,
4.4070

■ 159.8360,
-31.7730, -2.3730

■ 63.5130, 64.4630,
4.6470

■ 165.9000,
-37.8250, -2.8250

■ 172.6650,
-44.4730, -3.4890

Harmonies

Analogous

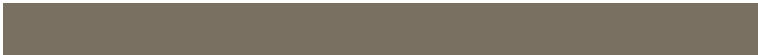
The Analogous color harmony consists of three colors that are next to each other on the color wheel.



114.7630, 14.0290, 4.5650



114.3560, 13.6170, 1.0170



113.3940, 10.4540, -2.2340

Triad

The Triadic color harmony groups three colors that are evenly spaced from another and form a triangle on the color wheel.



114.3560, 13.6170, 1.0170



111.0370, -10.5900, -6.3180



114.1230, -4.5400, 5.1880

Complementary

The Complementary color scheme is a pair of colors which are on the opposite of each other on the color wheel.



114.3560, 13.6170, 1.0170



114.6440, -13.6170, -1.0170

Split Complementary

Split-complementary colors differ from the complementary color scheme. The scheme consists of three colors, the original color and two neighbors of the complement color.



113.0080, -11.6460, 1.8100



114.3560, 13.6170, 1.0170



110.7530, -15.5420, -4.6780

Square

The Square scheme is like the rectangle color scheme, but the four colors are evenly spaced on the color wheel.



114.3560, 13.6170, 1.0170



111.6310, -3.5750, -6.7990



111.7470, -15.4050, -1.6530



115.0700, 2.9790, 6.5870

Rectangle

The Rectangle color scheme consists of four colors that form a rectangle on the color wheel.



114.3560, 13.6170, 1.0170



112.7740, 6.3280, -4.5520



111.7470, -15.4050, -1.6530



113.9270, -6.9240, 4.3400

Sweetspot

The Sweet Spot groups the original color and five complimentary colors.



114.3560, 13.6170, 1.0170



160.7510, 5.1350, 0.5510



111.1250, 10.3140, 11.3220



80.9680, 3.0260, 0.2260



212.0000, -0.0000, -0.0000



84.0000, -0.0000, -0.0000

Same Dimension

The Same Dimension uses a secret algorithm to generate beautiful new colors.



114.3560, 13.6170, 1.0170



144.7760, 21.1820, 1.5820



121.9870, 10.0420, -5.7820



60.2670, 3.6220, 0.4380



62.9260, 64.7380, 5.1700



0.0000, 0.0000, 0.0000

Inverse Universe

The Inverse Universe completely reimagines the original color for something new.



114.6440, -13.6170, -1.0170



145.2240, -21.1820, -1.5820



107.0130, -10.0420, 5.7820



60.7330, -3.6220, -0.4380



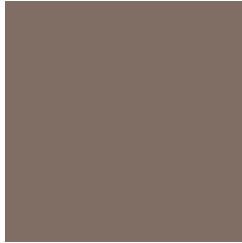
64.4870, -64.4630, -4.6470



0.0000, 0.0000, 0.0000

Previews

White Background



This preview shows how the YIQ color 114.3560, 13.6170, 1.0170 looks on a white background.

Color Contrast Check

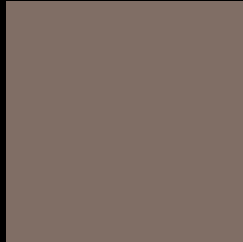
Large Text (above 18pt) WCAG AA ✓ Pass

Any Text WCAG AA ✓ Pass

Large Text (above 18pt) WCAG AAA ✓ Pass

Any Text WCAG AAA × Fail

Black Background



This preview shows how the YIQ color 114.3560, 13.6170, 1.0170 looks on a black background.

Color Contrast Check

Large Text (above 18pt) WCAG AA ✓ Pass

Any Text WCAG AA × Fail

Large Text (above 18pt) WCAG AAA × Fail

Any Text WCAG AAA × Fail

If you want to check with other color combinations, try the [Color Contrast Checker](#).

YIQ 114.3560, 13.6170, 1.0170

Background



This preview shows how black text looks on a background with the YIQ color 114.3560, 13.6170, 1.0170.

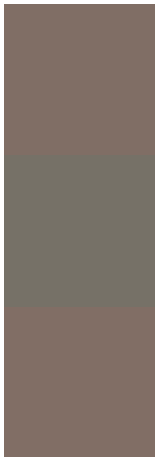


This preview shows how white text looks on a background with the YIQ color 114.3560, 13.6170,

Color Blindness Simulation

Color vision deficiency is a very complex topic, and I could not describe the different causes any better than Wikipedia does, so if you want to learn more, you should check out their [article about color blindness](#).

Dichromacy



Original Color

114.3560, 13.6170, 1.0170

Protanopia

113.3550, 6.1900, -2.0500

Deuteranopia

114.6550, 14.2130, 1.2290



Tritanopia

115.4900, 10.5440, 7.1520

Trichromacy



Original Color

114.3560, 13.6170, 1.0170

Protanomaly

113.8500, 9.1700, -0.9900

Deuteranomaly

114.6550, 14.2130, 1.2290

Tritanomaly

115.2080, 11.2780, 4.8620

Monochromacy



Original Color

114.3560, 13.6170, 1.0170

Achromatopsia

114.0000, 0.0000, 0.0000

Achromatomaly

114.3380, 4.8600, 0.0280

CSS Examples

Text

The CSS property to change the color of the text to YIQ 114.3560, 13.6170, 1.0170 is called "color". The color property can be set on classes, ids or directly on the HTML element.

This example shows how text in the color `rgb(128, 110, 101)` looks like.

```
.text, #text, p{  
    color:rgb(128, 110, 101)  
}
```

If you want to add a text shadow in that color use the text-shadow property, you can generate a text shadow directly with our [CSS Text Shadow Generator](#).

Here you see how black text with a 4 pixel rgb(128, 110, 101) colored shadow looks like.

```
.shadow{ text-shadow: 4px 4px 2px rgb(128, 110, 101) }
```

Border

The CSS property to change the border of an element to YIQ 114.3560, 13.6170, 1.0170 is called "border". The border property can be set on classes, ids or directly on the HTML element.

This example shows the color as border, it can be applied via the CSS property "border" or "border-color".

```
.border, #border, table{ border:4px solid rgb(128, 110, 101) }
```


If only the border color should be changed use the property `border-color`.

```
.border{ border-color:rgb(128, 110, 101) }
```

If you want to add a box shadow in that color use:

Here you see how a box with a 4 pixel `rgb(128, 110, 101)` colored shadow looks like.

```
.boxshadow{ -moz-box-shadow:4px 4px 4px  
4px rgb(128, 110, 101); -webkit-box-  
shadow:4px 4px 4px 4px rgb(128, 110, 101);  
box-shadow:4px 4px 4px 4px rgb(128, 110,  
101) }
```

Background

The CSS property to change the background color of an element to YIQ 114.3560, 13.6170, 1.0170 is called "background". The background property can be set on classes, ids or directly on the HTML element.

```
.background, #background, body{  
background: rgb(128, 110, 101) }
```

If only the background color should be changed can be used:

```
.background{ background-color: rgb(128,  
110, 101) }
```

This example shows the color as background, it is applied via the CSS property "background".

To optimize and compress your CSS code, you can use our [online CSS compressor and optimizer](#) based on csstidy. If you want to create a linear or radial gradient as background or border, check our [CSS Gradient Generator](#).

Hey! You found this booklet interesting? Support Converting Colors with the new Membership Option!

The pro membership hides all ads, plus gives you double the colors in the color bucket, and more awesome pro features!

[Learn more, Memberships starting at \\$2.50/m!](#)

**Follow me
on Twitter!**

@ConvertingColor