

Converting Colors

YIQ(114.8350, 39.8890, -1.5430)

Have a look what the booklet for
YIQ(114.8350, 39.8890, -1.5430)
contains.

YIQ(114.8350, 39.8890, -1.5430)	3
<i>Conversions</i>	4
<i>Details</i>	6
<i>Harmonies</i>	12
<i>Previews</i>	24
<i>Color Blindness Simulation</i>	28
<i>CSS Examples</i>	31

Color

**YIQ(114.8350, 39.8890,
-1.5430)**

Conversions

Conversions Part 1

Format	Color
Hex	986944
RGB	152, 105, 68
RGB Percent	60%, 41%, 27%
CMY	0.4038, 0.5883, 0.7331
CMYK	0.00, 0.31, 0.55, 0.40
HSL	26°, 38%, 43%
HSV	26°, 55%, 60%
XYZ	19.0475, 17.1946, 7.7915
YIQ	114.8350, 39.8890, -1.5430

Conversions

Conversions Part 2

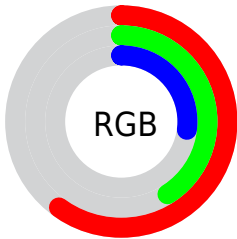
Format	Color
R_{YB}	152, 134, 68
Decimal	9988420
CIE _{Lab}	48.50, 14.56, 28.18
CIE _{LCh}	49, 31.721, 62.675
Yxy	17.1946, 0.4326, 0.3905
Android (android.graphics.Color)	4288178500 (0xFF986944)
YUV	114.8350, -23.0897, 32.5937
Hunter-Lab	41.4664, 9.4275, 17.8860

Details

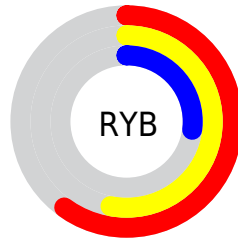
The YIQ color **114.8350, 39.8890, -1.5430** is a dark color, and the websafe version is hex **996633**. A complement of this color would be **105.1650, -39.8890, 1.5430**, and the grayscale version is **115.0000, -0.0000, 0.0000**.

A 20% lighter version of the original color is **167.4010, 44.1070, -0.8930**, and **65.9700, 35.0750, -2.4050** is the 20% darker color. If you saturate the color by 10%, you get **107.8420, 47.1790, -1.5010**, and if you desaturate by 10%, it is **121.2410, 32.8740, -1.0620**.

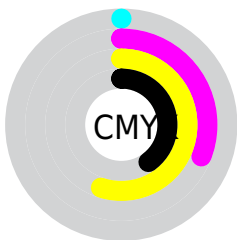
Distribution



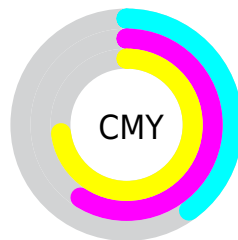
- Red (60%)
- Green (41%)
- Blue (27%)



- Red (60%)
- Yellow (53%)
- Blue (27%)



- Cyan (0%)
- Magenta (31%)
- Yellow (55%)
- Black (40%)



- Cyan (40%)
- Magenta (59%)
- Yellow (73%)

Brightness & Saturation Gradients

These gradients show how the YIQ color 114.8350, 39.8890, -1.5430 changes by changing the brightness by 10 percent. The first figure shows a shift by +10% for each color and the second figure -10%.

Similar to the brightness gradients but the following saturation gradients show a change of the YIQ color 114.8350, 39.8890, -1.5430 by changing the saturation by 10% instead.

■ 114.8350, 39.8890,
-1.5430

■ 114.8350, 39.8890,
-1.5430

■ 255.0000, -0.0000,
-0.0000

■ 90.0520, 37.7800,
-1.8680

■ 167.4010, 44.1070,
-0.8930

■ 65.9700, 35.0750,
-2.4050

■ 194.8850, 45.6200,
-0.7800

■ 42.6600, 33.0120,
-3.5640

■ 219.3680, 39.7060,
-3.7340

■ 22.8580, 23.8870,
2.1190

■ 238.9960, 23.0180,
-9.6700

■ 5.6810, 11.3240,
4.0280

■ 251.5800, 9.6300,
-9.3300

■ 0.0000, 0.0000,
0.0000

254.8860, 0.3210,

-0.3110

■ 114.8350, 39.8890,
-1.5430

■ 114.8350, 39.8890,
-1.5430

■ 107.8420, 47.1790,
-1.5010

■ 121.2410, 32.8740,
-1.0620

■ 101.4360, 54.1940,
-1.9820

■ 128.2340, 25.5840,
-1.1040

■ 94.3290, 61.8050,
-2.2510

■ 135.3410, 17.9730,
-0.8350

■ 87.9230, 68.8200,
-2.7320

■ 141.7470, 10.9580,
-0.3540

■ 84.7770, 72.1670,
-2.8170

■ 148.7400, 3.6680,
-0.3960

■ 155.1460, -3.3470,
0.0850

■ 162.1390,
-10.6370, 0.0430

■ 168.6590,
-17.9730, 0.8350

■ 175.6520,
-25.2630, 0.7930

Harmonies

Analogous

The Analogous color harmony consists of three colors that are next to each other on the color wheel.



116.3060, 43.4170, 11.6170



114.8350, 39.8890, -1.5430



112.7420, 26.5490, -13.0910

Triad

The Triadic color harmony groups three colors that are evenly spaced from another and form a triangle on the color wheel.



114.8350, 39.8890, -1.5430



95.0410, -61.1120, -26.8400



117.2280, -8.6690, 19.4510

Complementary

The Complementary color scheme is a pair of colors which are on the opposite of each other on the color wheel.



114.8350, 39.8890, -1.5430



105.1650, -39.8890, 1.5430

Split Complementary

Split-complementary colors differ from the complementary color scheme. The scheme consists of three colors, the original color and two neighbors of the complement color.



111.1530, -39.6150, 7.5930



114.8350, 39.8890, -1.5430



91.4380, -81.1030, -22.4710

Square

The Square scheme is like the rectangle color scheme, but the four colors are evenly spaced on the color wheel.



114.8350, 39.8890, -1.5430



105.4400, -22.6910, -23.8030



93.6480, -81.3340, -12.7740



118.6350, 18.1060, 24.2980

Rectangle

The Rectangle color scheme consists of four colors that form a rectangle on the color wheel.



114.8350, 39.8890, -1.5430



111.2240, 13.2080, -19.1120



93.6480, -81.3340, -12.7740



116.2590, -19.1220, 16.1580

Sweetspot

The Sweet Spot groups the original color and five complimentary colors.



114.8350, 39.8890, -1.5430



183.9710, 16.1390, -0.6370



98.5880, 34.6560, 32.7360



90.3770, 9.1240, -0.1560



227.0000, -0.0000, -0.0000



99.0000, -0.0000, 0.0000

Same Dimension

The Same Dimension uses a secret algorithm to generate beautiful new colors.



114.8350, 39.8890, -1.5430



140.6280, 62.4010, -2.0390



138.9020, 28.6140, -22.9860



73.1530, 3.9430, 0.1270



78.2540, 66.3900, -2.7460



7.4090, 6.0980, -0.3820

Inverse Universe

The Inverse Universe completely reimagines the original color for something new.



105.1650, -39.8890, 1.5430



125.7850, -62.1260, 2.5620



81.0980, -28.6140, 22.9860



72.2600, -3.6680, 0.3960



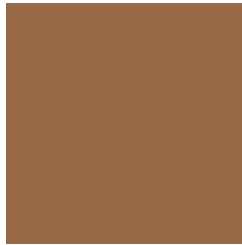
62.3330, -66.6650, 2.2230



5.5910, -6.0980, 0.3820

Previews

White Background



This preview shows how the YIQ color 114.8350, 39.8890, -1.5430 looks on a white background.

Color Contrast Check

Large Text (above 18pt) WCAG AA ✓ Pass

Any Text WCAG AA ✓ Pass

Large Text (above 18pt) WCAG AAA ✓ Pass

Any Text WCAG AAA × Fail

Black Background



This preview shows how the YIQ color 114.8350, 39.8890, -1.5430 looks on a black background.

Color Contrast Check

Large Text (above 18pt) WCAG AA ✓ Pass

Any Text WCAG AA × Fail

Large Text (above 18pt) WCAG AAA × Fail

Any Text WCAG AAA × Fail

If you want to check with other color combinations, try the [Color Contrast Checker](#).

YIQ 114.8350, 39.8890, -1.5430

Background



This preview shows how black text looks on a background with the YIQ color 114.8350, 39.8890, -1.5430.



This preview shows how white text looks on a background with the YIQ color 114.8350, 39.8890,

-1.5430.

Color Blindness Simulation

Color vision deficiency is a very complex topic, and I could not describe the different causes any better than Wikipedia does, so if you want to learn more, you should check out their [article about color blindness](#).

Dichromacy



Original Color

114.8350, 39.8890, -1.5430

Protanopia

113.9740, 20.0840, -11.5640

Deuteranopia

114.3670, 32.2790, -6.8010



Tritanopia

117.3570, 30.2120, 14.1480

Trichromacy



Original Color

114.8350, 39.8890, -1.5430

Protanomaly

114.2030, 26.8690, -7.8750

Deuteranomaly

114.3890, 35.2130, -4.9070

Tritanomaly

116.5220, 33.8810, 8.2250

Monochromacy



Original Color

114.8350, 39.8890, -1.5430

Achromatopsia

115.0000, -0.0000, 0.0000

Achromatomaly

114.6010, 14.3050, -0.4390

CSS Examples

Text

The CSS property to change the color of the text to YIQ 114.8350, 39.8890, -1.5430 is called "color". The color property can be set on classes, ids or directly on the HTML element.

This example shows how text in the color `rgb(152, 105, 68)` looks like.

```
.text, #text, p{  
    color:rgb(152, 105, 68)  
}
```

If you want to add a text shadow in that color use the text-shadow property, you can generate a text shadow directly with our [CSS Text Shadow Generator](#).

Here you see how black text with a 4 pixel rgb(152, 105, 68) colored shadow looks like.

```
.shadow{ text-shadow: 4px 4px 2px rgb(152, 105, 68) }
```

Border

The CSS property to change the border of an element to YIQ 114.8350, 39.8890, -1.5430 is called "border". The border property can be set on classes, ids or directly on the HTML element.

This example shows the color as border, it can be applied via the CSS property "border" or "border-color".

```
.border, #border, table{ border:4px solid rgb(152, 105, 68) }
```


If only the border color should be changed use the property `border-color`.

```
.border{ border-color:rgb(152, 105, 68) }
```

If you want to add a box shadow in that color use:

Here you see how a box with a 4 pixel `rgb(152, 105, 68)` colored shadow looks like.

```
.boxshadow{ -moz-box-shadow:4px 4px 4px  
4px rgb(152, 105, 68); -webkit-box-  
shadow:4px 4px 4px 4px rgb(152, 105, 68);  
box-shadow:4px 4px 4px 4px rgb(152, 105,  
68) }
```

Background

The CSS property to change the background color of an element to YIQ 114.8350, 39.8890, -1.5430 is called "background". The background property can be set on classes, ids or directly on the HTML element.

```
.background, #background, body{  
background: rgb(152, 105, 68) }
```

If only the background color should be changed can be used:

```
.background{ background-color: rgb(152,  
105, 68) }
```

This example shows the color as background, it is applied via the CSS property "background".

To optimize and compress your CSS code, you can use our [online CSS compressor and optimizer](#) based on csstidy. If you want to create a linear or radial gradient as background or border, check our [CSS Gradient Generator](#).

Hey! You found this booklet interesting? Support Converting Colors with the new Membership Option!

The pro membership hides all ads, plus gives you double the colors in the color bucket, and more awesome pro features!

[Learn more, Memberships starting at \\$2.50/m!](#)

**Follow me
on Twitter!**

@ConvertingColor