

Converting Colors

YIQ(114.8710, 31.0400, -0.8640)

Have a look what the booklet for
YIQ(114.8710, 31.0400, -0.8640)
contains.

YIQ(114.8710, 31.0400, -0.8640)	3
<i>Conversions</i>	4
<i>Details</i>	6
<i>Harmonies</i>	12
<i>Previews</i>	24
<i>Color Blindness Simulation</i>	28
<i>CSS Examples</i>	31

Color

**YIQ(114.8710, 31.0400,
-0.8640)**

Conversions

Conversions Part 1

Format	Color
Hex	906B4F
RGB	144, 107, 79
RGB Percent	56%, 42%, 31%
CMY	0.4352, 0.5804, 0.6900
CMYK	0.00, 0.26, 0.45, 0.44
HSL	26°, 29%, 44%
HSV	26°, 45%, 56%
XYZ	18.1734, 17.0081, 9.7292
YIQ	114.8710, 31.0400, -0.8640

Conversions

Conversions Part 2

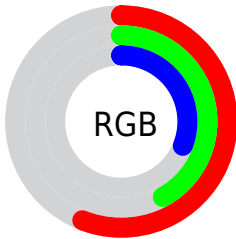
Format	Color
RYB	144, 128, 79
Decimal	9464655
CIELab	48.27, 11.02, 21.40
CIELCh	48, 24.070, 62.742
Yxy	17.0081, 0.4047, 0.3787
Android (android.graphics.Color)	4287654735 (0xFF906B4F)
YUV	114.8710, -17.6844, 25.5461
Hunter-Lab	41.2409, 6.4873, 14.8814

Details

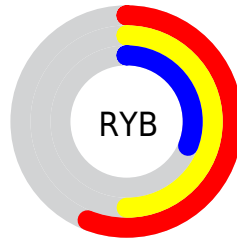
The YIQ color **114.8710, 31.0400, -0.8640** is a dark color, and the websafe version is hex **996633**. A complement of this color would be **108.1290, -31.0400, 0.8640**, and the grayscale version is **115.0000, -0.0000, 0.0000**.

A 20% lighter version of the original color is **166.8390, 34.0660, -0.6380**, and **66.6040, 27.4180, -1.3020** is the 20% darker color. If you saturate the color by 10%, you get **108.5790, 37.7340, -1.0340**, and if you desaturate by 10%, it is **121.1630, 24.3460, -0.6940**.

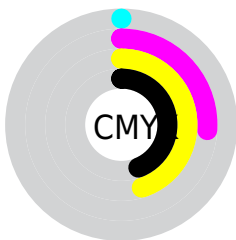
Distribution



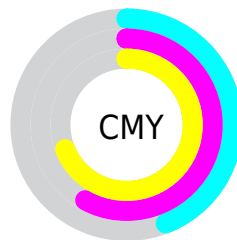
- Red (56%)
- Green (42%)
- Blue (31%)



- Red (56%)
- Yellow (50%)
- Blue (31%)



- Cyan (0%)
- Magenta (26%)
- Yellow (45%)
- Black (44%)



- Cyan (44%)
- Magenta (58%)
- Yellow (69%)

Brightness & Saturation Gradients

These gradients show how the YIQ color 114.8710, 31.0400, -0.8640 changes by changing the brightness by 10 percent. The first figure shows a shift by +10% for each color and the second figure -10%.

Similar to the brightness gradients but the following saturation gradients show a change of the YIQ color 114.8710, 31.0400, -0.8640 by changing the saturation by 10% instead.

■ 114.8710, 31.0400,
-0.8640

■ 114.8710, 31.0400,
-0.8640

■ 255.0000, -0.0000,
-0.0000

■ 90.0880, 28.9310,
-1.1890

■ 166.8390, 34.0660,
-0.6380

■ 66.6040, 27.4180,
-1.3020

■ 194.4370, 35.2580,
-0.2140

■ 43.8210, 25.3090,
-1.6270

■ 221.9100, 35.3040,
-1.0480

■ 22.8360, 20.9530,
0.2250

■ 241.5380, 18.6160,
-6.9840

■ 2.6910, 5.3640,
1.9080

■ 252.9480, 5.7780,
-5.5980

■ 0.0000, 0.0000,
0.0000

■ 114.8710, 31.0400,
-0.8640

■ 114.8710, 31.0400,
-0.8640

■ 108.5790, 37.7340,
-1.0340

■ 121.1630, 24.3460,
-0.6940

■ 102.1730, 44.7490,
-1.5150

■ 127.5690, 17.3310,
-0.2130

■ 95.2940, 51.7180,
-1.1620

■ 134.4480, 10.3620,
-0.5660

■ 88.8880, 58.7330,
-1.6430

■ 140.8540, 3.3470,
-0.0850

■ 82.5960, 65.4270,
-1.8130

■ 147.1460, -3.3470,
0.0850

■ 79.4500, 68.7740,
-1.8980

■ 153.4380,
-10.0410, 0.2550

■ 159.8440,
-17.0560, 0.7360

■ 166.7230,

-24.0250, 0.3830

■ 173.1290,
-31.0400, 0.8640

Harmonies

Analogous

The Analogous color harmony consists of three colors that are next to each other on the color wheel.



116.0490, 33.8350, 9.0590



114.8710, 31.0400, -0.8640



113.3270, 20.5880, -9.6840

Triad

The Triadic color harmony groups three colors that are evenly spaced from another and form a triangle on the color wheel.



114.8710, 31.0400, -0.8640



104.5280, -37.3180, -17.5260



116.8490, -6.2840, 14.7720

Complementary

The Complementary color scheme is a pair of colors which are on the opposite of each other on the color wheel.



114.8710, 31.0400, -0.8640



108.1290, -31.0400, 0.8640

Split Complementary

Split-complementary colors differ from the complementary color scheme. The scheme consists of three colors, the original color and two neighbors of the complement color.



112.6720, -28.0150, 6.6170



114.8710, 31.0400, -0.8640



102.6330, -50.6150, -13.3270

Square

The Square scheme is like the rectangle color scheme, but the four colors are evenly spaced on the color wheel.



114.8710, 31.0400, -0.8640



107.8370, -16.3190, -18.1350



106.6540, -45.9400, -4.4360



117.6080, 13.5680, 18.4320

Rectangle

The Rectangle color scheme consists of four colors that form a rectangle on the color wheel.



114.8710, 31.0400, -0.8640



111.8310, 10.1810, -13.8110



106.6540, -45.9400, -4.4360



115.3750, -13.7570, 12.5390

Sweetspot

The Sweet Spot groups the original color and five complimentary colors.



114.8710, 31.0400, -0.8640



174.2310, 12.4710, -0.2410



102.7670, 26.5420, 25.5980



86.8930, 7.6110, -0.2690



222.0000, -0.0000, 0.0000



94.0000, 0.0000, 0.0000

Same Dimension

The Same Dimension uses a secret algorithm to generate beautiful new colors.



114.8710, 31.0400, -0.8640



141.1410, 47.7750, -1.2890



133.6550, 22.2400, -17.6000



67.8540, 3.3470, -0.0850



74.4110, 64.5100, -1.7140



4.1530, 3.9430, 0.1270

Inverse Universe

The Inverse Universe completely reimagines the original color for something new.



108.1290, -31.0400, 0.8640



130.8590, -47.7750, 1.2890



89.3450, -22.2400, 17.6000



67.1460, -3.3470, 0.0850



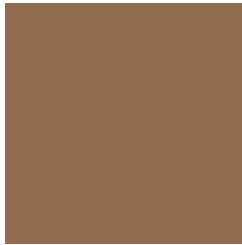
60.5890, -64.5100, 1.7140



3.2600, -3.6680, 0.3960

Previews

White Background



This preview shows how the YIQ color 114.8710, 31.0400, -0.8640 looks on a white background.

Color Contrast Check

Large Text (above 18pt) WCAG AA ✓ Pass

Any Text WCAG AA ✓ Pass

Large Text (above 18pt) WCAG AAA ✓ Pass

Any Text WCAG AAA × Fail

Black Background



This preview shows how the YIQ color 114.8710, 31.0400, -0.8640 looks on a black background.

Color Contrast Check

Large Text (above 18pt) WCAG AA ✓ Pass

Any Text WCAG AA × Fail

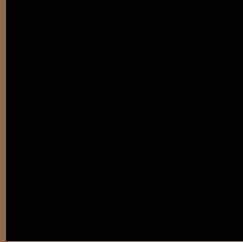
Large Text (above 18pt) WCAG AAA × Fail

Any Text WCAG AAA × Fail

If you want to check with other color combinations, try the [Color Contrast Checker](#).

YIQ 114.8710, 31.0400, -0.8640

Background



This preview shows how black text looks on a background with the YIQ color 114.8710, 31.0400, -0.8640.



This preview shows how white text looks on a background with the YIQ color 114.8710, 31.0400, -0.8640.

-0.8640.

Color Blindness Simulation

Color vision deficiency is a very complex topic, and I could not describe the different causes any better than Wikipedia does, so if you want to learn more, you should check out their [article about color blindness](#).

Dichromacy



Original Color

114.8710, 31.0400, -0.8640

Protanopia

113.9290, 15.9570, -8.3550

Deuteranopia

114.4250, 26.3640, -4.2280



Tritanopia

117.0680, 23.6560, 11.8160

Trichromacy



Original Color

114.8710, 31.0400, -0.8640

Protanomaly

114.1470, 21.2750, -5.6130

Deuteranomaly

114.7350, 28.4270, -3.0690

Tritanomaly

115.9880, 26.6370, 7.3490

Monochromacy



Original Color

114.8710, 31.0400, -0.8640

Achromatopsia

115.0000, -0.0000, 0.0000

Achromatomaly

115.0460, 11.5540, -0.1420

CSS Examples

Text

The CSS property to change the color of the text to YIQ 114.8710, 31.0400, -0.8640 is called "color". The color property can be set on classes, ids or directly on the HTML element.

This example shows how text in the color `rgb(144, 107, 79)` looks like.

```
.text, #text, p{  
    color:rgb(144, 107, 79)  
}
```

If you want to add a text shadow in that color use the text-shadow property, you can generate a text shadow directly with our [CSS Text Shadow Generator](#).

Here you see how black text with a 4 pixel rgb(144, 107, 79) colored shadow looks like.

```
.shadow{ text-shadow: 4px 4px 2px rgb(144, 107, 79) }
```

Border

The CSS property to change the border of an element to YIQ 114.8710, 31.0400, -0.8640 is called "border". The border property can be set on classes, ids or directly on the HTML element.

This example shows the color as border, it can be applied via the CSS property "border" or "border-color".

```
.border, #border, table{ border:4px solid rgb(144, 107, 79) }
```


If only the border color should be changed use the property border-color.

```
.border{ border-color:rgb(144, 107, 79) }
```

If you want to add a box shadow in that color use:

Here you see how a box with a 4 pixel rgb(144, 107, 79) colored shadow looks like.

```
.boxshadow{ -moz-box-shadow:4px 4px 4px  
4px rgb(144, 107, 79); -webkit-box-  
shadow:4px 4px 4px 4px rgb(144, 107, 79);  
box-shadow:4px 4px 4px 4px rgb(144, 107,  
79) }
```

Background

The CSS property to change the background color of an element to YIQ 114.8710, 31.0400, -0.8640 is called "background". The background property can be set on classes, ids or directly on the HTML element.

```
.background, #background, body{  
background: rgb(144, 107, 79) }
```

If only the background color should be changed can be used:

```
.background{ background-color: rgb(144,  
107, 79) }
```

This example shows the color as background, it is applied via the CSS property "background".

To optimize and compress your CSS code, you can use our [online CSS compressor and optimizer](#) based on csstidy. If you want to create a linear or radial gradient as background or border, check our [CSS Gradient Generator](#).

Hey! You found this booklet interesting? Support Converting Colors with the new Membership Option!

The pro membership hides all ads, plus gives you double the colors in the color bucket, and more awesome pro features!

[Learn more, Memberships starting at \\$2.50/m!](#)

**Follow me
on Twitter!**

@ConvertingColor