

Converting Colors

YIQ(115.2310, 38.8340, 1.0580)

Have a look what the booklet for
YIQ(115.2310, 38.8340, 1.0580)
contains.

YIQ(115.2310, 38.8340, 1.0580)	3
<i>Conversions</i>	4
<i>Details</i>	6
<i>Harmonies</i>	12
<i>Previews</i>	24
<i>Color Blindness Simulation</i>	28
<i>CSS Examples</i>	31

Color

**YIQ(115.2310, 38.8340,
1.0580)**

Conversions

Conversions Part 1

Format	Color
Hex	99684A
RGB	153, 104, 74
RGB Percent	60%, 41%, 29%
CMY	0.3999, 0.5922, 0.7096
CMYK	0.00, 0.32, 0.52, 0.40
HSL	23°, 35%, 45%
HSV	23°, 52%, 60%
XYZ	19.3274, 17.1662, 8.7813
YIQ	115.2310, 38.8340, 1.0580

Conversions

Conversions Part 2

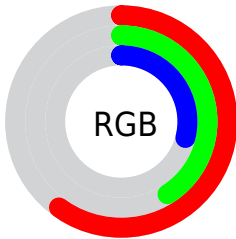
Format	Color
RYB	153, 122, 74
Decimal	10053706
CIELab	48.47, 16.14, 24.74
CIELCh	48, 29.542, 56.883
Yxy	17.1662, 0.4269, 0.3792
Android (android.graphics.Color)	4288243786 (0xFF99684A)
YUV	115.2310, -20.3269, 33.1234
Hunter-Lab	41.4321, 10.7609, 16.4363

Details

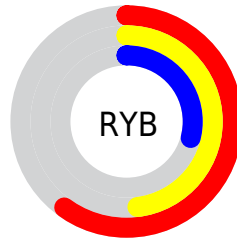
The YIQ color **115.2310, 38.8340, 1.0580** is a dark color, and the websafe version is hex **996633**. A complement of this color would be **111.7690, -38.8340, -1.0580**, and the grayscale version is **115.0000, -0.0000, 0.0000**.

A 20% lighter version of the original color is **167.4980, 42.4560, 1.4960**, and **66.3660, 34.0200, 0.1960** is the 20% darker color. If you saturate the color by 10%, you get **107.6510, 46.3990, 1.6230**, and if you desaturate by 10%, it is **122.2240, 31.5440, 1.0160**.

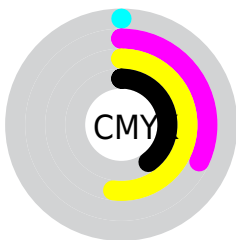
Distribution



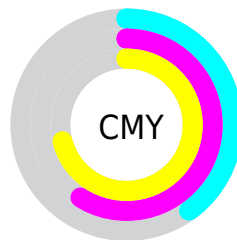
- Red (60%)
- Green (41%)
- Blue (29%)



- Red (60%)
- Yellow (48%)
- Blue (29%)



- Cyan (0%)
- Magenta (32%)
- Yellow (52%)
- Black (40%)



- Cyan (40%)
- Magenta (59%)
- Yellow (71%)

Brightness & Saturation Gradients

These gradients show how the YIQ color 115.2310, 38.8340, 1.0580 changes by changing the brightness by 10 percent. The first figure shows a shift by +10% for each color and the second figure -10%.

Similar to the brightness gradients but the following saturation gradients show a change of the YIQ color 115.2310, 38.8340, 1.0580 by changing the saturation by 10% instead.

■ 115.2310, 38.8340,
1.0580

■ 115.2310, 38.8340,
1.0580

■ 255.0000, -0.0000,
-0.0000

■ 90.4480, 36.7250,
0.7330

■ 167.7970, 43.0520,
1.7080

■ 66.3660, 34.0200,
0.1960

■ 195.2810, 44.5650,
1.8210

■ 43.0560, 31.9570,
-0.9630

■ 219.5790, 37.7340,
-1.0340

■ 22.5700, 24.7580,
2.8540

■ 239.0930, 21.3670,
-7.2810

■ 6.2790, 12.5160,
4.4520

■ 252.3780, 7.3830,
-7.1530

■ 0.0000, 0.0000,
0.0000

■ 115.2310, 38.8340,
1.0580

■ 115.2310, 38.8340,
1.0580

■ 107.6510, 46.3990,
1.6230

■ 122.2240, 31.5440,
1.0160

■ 100.5440, 54.0100,
1.3540

■ 129.9180, 23.6580,
0.7620

■ 92.9640, 61.5750,
1.9190

■ 136.9110, 16.3680,
0.7200

■ 85.9710, 68.8650,
1.9610

■ 144.4910, 8.8030,
0.1550

■ 79.7930, 75.2380,
2.1020

■ 151.5980, 1.1920,
0.4240

■ 159.1780, -6.3730,
-0.1410

■ 166.1710,
-13.6630, -0.1830

■ 173.7510,

-21.2280, -0.7480

■ 181.4450,
-29.1140, -1.0020

Harmonies

Analogous

The Analogous color harmony consists of three colors that are next to each other on the color wheel.



116.3920, 40.2990, 13.0590



115.2310, 38.8340, 1.0580



113.8070, 27.9240, -10.4760

Triad

The Triadic color harmony groups three colors that are evenly spaced from another and form a triangle on the color wheel.



115.2310, 38.8340, 1.0580



100.7610, -45.5240, -22.9960



116.8960, -13.6660, 16.3980

Complementary

The Complementary color scheme is a pair of colors which are on the opposite of each other on the color wheel.



115.2310, 38.8340, 1.0580



111.7690, -38.8340, -1.0580

Split Complementary

Split-complementary colors differ from the complementary color scheme. The scheme consists of three colors, the original color and two neighbors of the complement color.



109.9030, -41.9070, 5.0770



115.2310, 38.8340, 1.0580



90.7540, -79.1770, -24.3370

Square

The Square scheme is like the rectangle color scheme, but the four colors are evenly spaced on the color wheel.



115.2310, 38.8340, 1.0580



107.5010, -15.4930, -22.0930



97.4380, -71.9350, -12.4070



118.6450, 12.1460, 22.1780

Rectangle

The Rectangle color scheme consists of four colors that form a rectangle on the color wheel.



115.2310, 38.8340, 1.0580



111.7730, 16.0960, -16.3840



97.4380, -71.9350, -12.4070



115.1120, -23.2020, 13.0060

Sweetspot

The Sweet Spot groups the original color and five complimentary colors.



115.2310, 38.8340, 1.0580



184.4270, 14.8550, 0.6070



103.3210, 31.0340, 32.2980



90.6050, 8.4820, 0.4660



227.0000, -0.0000, -0.0000



99.0000, -0.0000, 0.0000

Same Dimension

The Same Dimension uses a secret algorithm to generate beautiful new colors.



115.2310, 38.8340, 1.0580



139.7790, 60.6580, 2.0180



137.5370, 28.3840, -18.8160



73.1530, 3.9430, 0.1270



72.9710, 68.8650, 1.9610



6.8220, 6.3730, 0.1410

Inverse Universe

The Inverse Universe completely reimagines the original color for something new.



111.7690, -38.8340, -1.0580



134.6340, -60.3830, -1.4950



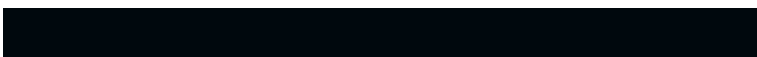
89.4630, -28.3840, 18.8160



72.8470, -3.9430, -0.1270



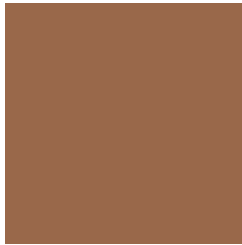
67.0290, -68.8650, -1.9610



6.1780, -6.3730, -0.1410

Previews

White Background



This preview shows how the YIQ color 115.2310, 38.8340, 1.0580 looks on a white background.

Color Contrast Check

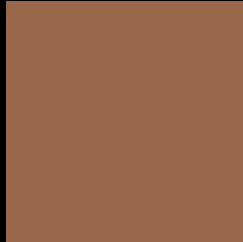
Large Text (above 18pt) WCAG AA ✓ Pass

Any Text WCAG AA ✓ Pass

Large Text (above 18pt) WCAG AAA ✓ Pass

Any Text WCAG AAA × Fail

Black Background



This preview shows how the YIQ color 115.2310, 38.8340, 1.0580 looks on a black background.

Color Contrast Check

Large Text (above 18pt) WCAG AA ✓ Pass

Any Text WCAG AA × Fail

Large Text (above 18pt) WCAG AAA × Fail

Any Text WCAG AAA × Fail

If you want to check with other color combinations, try the [Color Contrast Checker](#).

YIQ 115.2310, 38.8340, 1.0580

Background



This preview shows how black text looks on a background with the YIQ color 115.2310, 38.8340, 1.0580.



This preview shows how white text looks on a background with the YIQ color 115.2310, 38.8340,

Color Blindness Simulation

Color vision deficiency is a very complex topic, and I could not describe the different causes any better than Wikipedia does, so if you want to learn more, you should check out their [article about color blindness](#).

Dichromacy



Original Color

115.2310, 38.8340, 1.0580

Protanopia

113.8860, 17.5160, -9.0760

Deuteranopia

114.4530, 29.1610, -5.3590



Tritanopia

117.5420, 31.1290, 14.0490

Trichromacy



Original Color

115.2310, 38.8340, 1.0580

Protanomaly

114.3000, 25.2180, -5.4860

Deuteranomaly

114.7740, 32.6910, -3.2530

Tritanomaly

116.4620, 34.1100, 9.5820

Monochromacy



Original Color

115.2310, 38.8340, 1.0580

Achromatopsia

115.0000, -0.0000, 0.0000

Achromatomaly

115.1280, 14.2590, 0.3950

CSS Examples

Text

The CSS property to change the color of the text to YIQ 115.2310, 38.8340, 1.0580 is called "color". The color property can be set on classes, ids or directly on the HTML element.

This example shows how text in the color `rgb(153, 104, 74)` looks like.

```
.text, #text, p{  
    color:rgb(153, 104, 74)  
}
```

If you want to add a text shadow in that color use the text-shadow property, you can generate a text shadow directly with our [CSS Text Shadow Generator](#).

Here you see how black text with a 4 pixel rgb(153, 104, 74) colored shadow looks like.

```
.shadow{ text-shadow: 4px 4px 2px rgb(153, 104, 74) }
```

Border

The CSS property to change the border of an element to YIQ 115.2310, 38.8340, 1.0580 is called "border". The border property can be set on classes, ids or directly on the HTML element.

This example shows the color as border, it can be applied via the CSS property "border" or "border-color".

```
.border, #border, table{ border:4px solid rgb(153, 104, 74) }
```


If only the border color should be changed use the property `border-color`.

```
.border{ border-color:rgb(153, 104, 74) }
```

If you want to add a box shadow in that color use:

Here you see how a box with a 4 pixel `rgb(153, 104, 74)` colored shadow looks like.

```
.boxshadow{ -moz-box-shadow:4px 4px 4px  
4px rgb(153, 104, 74); -webkit-box-  
shadow:4px 4px 4px 4px rgb(153, 104, 74);  
box-shadow:4px 4px 4px 4px rgb(153, 104,  
74) }
```

Background

The CSS property to change the background color of an element to YIQ 115.2310, 38.8340, 1.0580 is called "background". The background property can be set on classes, ids or directly on the HTML element.

```
.background, #background, body{  
background: rgb(153, 104, 74) }
```

If only the background color should be changed can be used:

```
.background{ background-color: rgb(153,  
104, 74) }
```

This example shows the color as background, it is applied via the CSS property "background".

To optimize and compress your CSS code, you can use our [online CSS compressor and optimizer](#) based on csstidy. If you want to create a linear or radial gradient as background or border, check our [CSS Gradient Generator](#).

Hey! You found this booklet interesting? Support Converting Colors with the new Membership Option!

The pro membership hides all ads, plus gives you double the colors in the color bucket, and more awesome pro features!

[Learn more, Memberships starting at \\$2.50/m!](#)

**Follow me
on Twitter!**

@ConvertingColor