

Converting Colors

YIQ(115.4590, 74.8640, 41.9360)

Have a look what the booklet for
YIQ(115.4590, 74.8640, 41.9360)
contains.

YIQ(115.4590, 74.8640, 41.9360)	3
<i>Conversions</i>	4
<i>Details</i>	6
<i>Harmonies</i>	12
<i>Previews</i>	24
<i>Color Blindness Simulation</i>	28
<i>CSS Examples</i>	31

Color

**YIQ(115.4590, 74.8640,
41.9360)**

Conversions

Conversions Part 1

Format	Color
Hex	D54468
RGB	213, 68, 104
RGB Percent	84%, 27%, 41%
CMY	0.1643, 0.7335, 0.5919
CMYK	0.00, 0.68, 0.51, 0.16
HSL	345°, 63%, 55%
HSV	345°, 68%, 84%
XYZ	32.0334, 19.2879, 15.1496
YIQ	115.4590, 74.8640, 41.9360

Conversions

Conversions Part 2

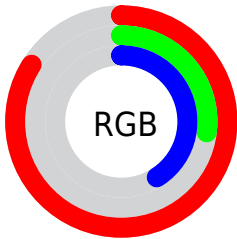
Format	Color
R_{YB}	213, 68, 104
Decimal	13976680
CIE Lab	51.02, 59.07, 11.92
CIE LCh	51, 60.258, 11.409
Yxy	19.2879, 0.4819, 0.2902
Android (android.graphics.Color)	4292166760 (0xFFD54468)
YUV	115.4590, -5.6493, 85.5435
Hunter-Lab	43.9180, 53.3397, 10.2904

Details

The YIQ color **115.4590, 74.8640, 41.9360** is a dark color, and the websafe version is hex **CC3366**. The color can be described as dark muted rose. A complement of this color would be **165.5410, -74.8640, -41.9360**, and the grayscale version is **115.0000, -0.0000, 0.0000**.

A 20% lighter version of the original color is **167.2900, 67.8500, 36.8900**, and **52.2450, 72.8910, 50.1630** is the 20% darker color. If you saturate the color by 10%, you get **101.3080, 85.7750, 47.9430**, and if you desaturate by 10%, it is **129.6100, 63.9530, 35.9290**.

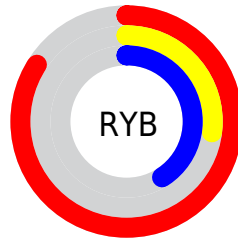
Distribution



Red (84%)

Green (27%)

Blue (41%)



Red (84%)

Yellow (27%)

Blue (41%)

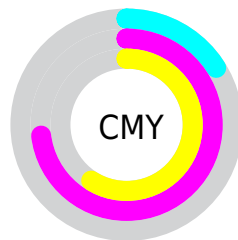


Cyan (0%)

Magenta (68%)

Yellow (51%)

Black (16%)



Cyan (16%)

Magenta (73%)

Yellow (59%)

Brightness & Saturation Gradients

These gradients show how the YIQ color 115.4590, 74.8640, 41.9360 changes by changing the brightness by 10 percent. The first figure shows a shift by +10% for each color and the second figure -10%.

Similar to the brightness gradients but the following saturation gradients show a change of the YIQ color 115.4590, 74.8640, 41.9360 by changing the saturation by 10% instead.

■ 115.4590, 74.8640,
41.9360

■ 115.4590, 74.8640,
41.9360

■ 255.0000, -0.0000,
-0.0000

■ 84.9690, 73.4880,
44.8480

■ 167.2900, 67.8500,
36.8900

■ 52.2450, 72.8910,
50.1630

■ 186.8040, 51.4830,
30.6430

■ 40.8810, 61.7520,
37.2720

■ 206.3180, 35.1160,
24.3960

■ 29.8160, 51.2090,
24.5930

■ 226.5330, 18.1530,
17.9370

■ 20.2610, 39.2900,
14.8260

■ 246.1950, 4.1250,
7.8450

■ 10.2800, 19.9430,
7.5190

■ 0.0000, 0.0000,

0.0000

■ 115.4590, 74.8640,
41.9360

■ 115.4590, 74.8640,
41.9360

■ 101.3080, 85.7750,
47.9430

■ 129.6100, 63.9530,
35.9290

■ 86.5700, 96.9610,
54.4730

■ 144.3480, 52.7670,
29.3990

■ 72.4190, 107.8720,
60.4800

■ 158.4990, 41.8560,
23.3920

■ 69.7290, 109.9350,
61.6390

■ 172.6500, 30.9450,
17.3850

■ 186.8010, 20.0340,
11.3780

■ 201.5390, 8.8480,
4.8480

■ 215.6900, -2.0630,
-1.1590

■ 229.8410,
-12.9740, -7.1660

■ 241.6440,
-22.7850, -11.0810

Harmonies

Analogous

The Analogous color harmony consists of three colors that are next to each other on the color wheel.



120.7120, 46.7110, 51.0550



115.4590, 74.8640, 41.9360



115.9760, 79.6370, 15.9970

Triad

The Triadic color harmony groups three colors that are evenly spaced from another and form a triangle on the color wheel.



115.4590, 74.8640, 41.9360



105.4530, -7.5110, -45.6150



104.7980, -107.6990, -3.0190

Complementary

The Complementary color scheme is a pair of colors which are on the opposite of each other on the color wheel.



115.4590, 74.8640, 41.9360



165.5410, -74.8640, -41.9360

Split Complementary

Split-complementary colors differ from the complementary color scheme. The scheme consists of three colors, the original color and two neighbors of the complement color.



105.4870, -99.9940, -16.0100



115.4590, 74.8640, 41.9360



93.8590, -67.2520, -47.7320

Square

The Square scheme is like the rectangle color scheme, but the four colors are evenly spaced on the color wheel.



115.4590, 74.8640, 41.9360



111.6470, 41.9130, -38.2390



101.0750, -84.8150, -32.2950



105.4190, -86.9780, 12.4300

Rectangle

The Rectangle color scheme consists of four colors that form a rectangle on the color wheel.



115.4590, 74.8640, 41.9360



116.5660, 74.1390, -5.5170



101.0750, -84.8150, -32.2950



105.7610, -106.2770, -6.7650

Sweetspot

The Sweet Spot groups the original color and five complimentary colors.



115.4590, 74.8640, 41.9360



220.7310, 26.2230, 14.8550



117.1210, 18.4190, 68.2030



107.1810, 15.9080, 9.0600



0.0000, 0.0000, 0.0000



128.0000, -0.0000, -0.0000

Same Dimension

The Same Dimension uses a secret algorithm to generate beautiful new colors.



115.4590, 74.8640, 41.9360



114.4190, 107.8720, 60.4800



132.4870, 76.5200, 11.9120



99.6310, 5.5930, 3.2650



56.0310, 88.1130, 49.6250



14.1110, 22.0970, 12.5370

Inverse Universe

The Inverse Universe completely reimagines the original color for something new.



115.4590, 74.8640, 41.9360



114.4190, 107.8720, 60.4800



148.5130, -76.5200, -11.9120



99.6310, 5.5930, 3.2650



56.0310, 88.1130, 49.6250



14.1110, 22.0970, 12.5370

Previews

White Background



This preview shows how the YIQ color 115.4590, 74.8640, 41.9360 looks on a white background.

Color Contrast Check

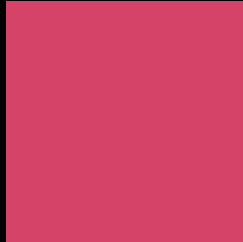
Large Text (above 18pt) WCAG AA ✓ Pass

Any Text WCAG AA × Fail

Large Text (above 18pt) WCAG AAA × Fail

Any Text WCAG AAA × Fail

Black Background



This preview shows how the YIQ color 115.4590, 74.8640, 41.9360 looks on a black background.

Color Contrast Check

Large Text (above 18pt) WCAG AA ✓ Pass

Any Text WCAG AA ✓ Pass

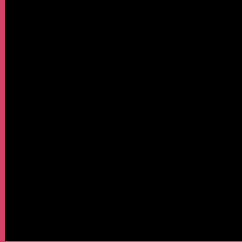
Large Text (above 18pt) WCAG AAA ✓ Pass

Any Text WCAG AAA × Fail

If you want to check with other color combinations, try the [Color Contrast Checker](#).

YIQ 115.4590, 74.8640, 41.9360

Background



This preview shows how black text looks on a background with the YIQ color 115.4590, 74.8640, 41.9360.



This preview shows how white text looks on a background with the YIQ color 115.4590, 74.8640,

Color Blindness Simulation

Color vision deficiency is a very complex topic, and I could not describe the different causes any better than Wikipedia does, so if you want to learn more, you should check out their [article about color blindness](#).

Dichromacy



Original Color

115.4590, 74.8640, 41.9360

Protanopia

122.2540, -3.5310, 3.4210

Deuteranopia

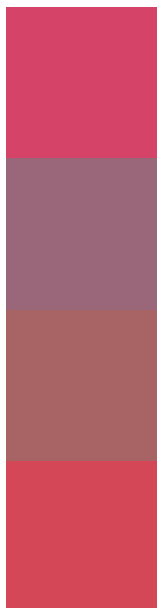
122.1950, 21.3200, -0.9200



Tritanopia

115.1310, 81.2390, 31.0230

Trichromacy



Original Color

115.4590, 74.8640, 41.9360

Protanomaly

119.8280, 24.5720, 17.2440

Deuteranomaly

119.7450, 40.8030, 14.9390

Tritanomaly

114.9830, 78.9000, 34.8680

Monochromacy



Original Color

115.4590, 74.8640, 41.9360

Achromatopsia

115.0000, -0.0000, 0.0000

Achromatomaly

115.3290, 27.4150, 15.2790

CSS Examples

Text

The CSS property to change the color of the text to YIQ 115.4590, 74.8640, 41.9360 is called "color". The color property can be set on classes, ids or directly on the HTML element.

This example shows how text in the color `rgb(213, 68, 104)` looks like.

```
.text, #text, p{  
    color:rgb(213, 68, 104)  
}
```

If you want to add a text shadow in that color use the text-shadow property, you can generate a text shadow directly with our [CSS Text Shadow Generator](#).

Here you see how black text with a 4 pixel rgb(213, 68, 104) colored shadow looks like.

```
.shadow{ text-shadow: 4px 4px 2px rgb(213, 68, 104) }
```

Border

The CSS property to change the border of an element to YIQ 115.4590, 74.8640, 41.9360 is called "border". The border property can be set on classes, ids or directly on the HTML element.

This example shows the color as border, it can be applied via the CSS property "border" or "border-color".

```
.border, #border, table{ border:4px solid rgb(213, 68, 104) }
```


If only the border color should be changed use the property `border-color`.

```
.border{ border-color:rgb(213, 68, 104) }
```

If you want to add a box shadow in that color use:

Here you see how a box with a 4 pixel `rgb(213, 68, 104)` colored shadow looks like.

```
.boxshadow{ -moz-box-shadow:4px 4px 4px  
4px rgb(213, 68, 104); -webkit-box-  
shadow:4px 4px 4px 4px rgb(213, 68, 104);  
box-shadow:4px 4px 4px 4px rgb(213, 68,  
104) }
```

Background

The CSS property to change the background color of an element to YIQ 115.4590, 74.8640, 41.9360 is called "background". The background property can be set on classes, ids or directly on the HTML element.

```
.background, #background, body{  
background: rgb(213, 68, 104) }
```

If only the background color should be changed can be used:

```
.background{ background-color: rgb(213, 68,  
104) }
```

This example shows the color as background, it is applied via the CSS property "background".

To optimize and compress your CSS code, you can use our [online CSS compressor and optimizer](#) based on csstidy. If you want to create a linear or radial gradient as background or border, check our [CSS Gradient Generator](#).

Hey! You found this booklet interesting? Support Converting Colors with the new Membership Option!

The pro membership hides all ads, plus gives you double the colors in the color bucket, and more awesome pro features!

[Learn more, Memberships starting at \\$2.50/m!](#)

**Follow me
on Twitter!**

@ConvertingColor