

Converting Colors

YIQ(118.3810, 38.8320, 12.1120)

Have a look what the booklet for
YIQ(118.3810, 38.8320, 12.1120)
contains.

YIQ(118.3810, 38.8320, 12.1120)	3
<i>Conversions</i>	4
<i>Details</i>	6
<i>Harmonies</i>	12
<i>Previews</i>	24
<i>Color Blindness Simulation</i>	28
<i>CSS Examples</i>	31

Color

**YIQ(118.3810, 38.8320,
12.1120)**

Conversions

Conversions Part 1

Format	Color
Hex	A36460
RGB	163, 100, 96
RGB Percent	64%, 39%, 38%
CMY	0.3606, 0.6079, 0.6234
CMYK	0.00, 0.39, 0.41, 0.36
HSL	4°, 27%, 51%
HSV	4°, 41%, 64%
XYZ	21.7798, 17.7450, 13.3532
YIQ	118.3810, 38.8320, 12.1120

Conversions

Conversions Part 2

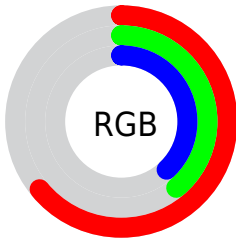
Format	Color
R_{YB}	163, 100, 96
Decimal	10708064
CIE _{Lab}	49.19, 25.00, 13.02
CIE _{LCh}	49, 28.185, 27.519
Yxy	17.7450, 0.4119, 0.3356
Android (android.graphics.Color)	4288898144 (0xFFA36460)
YUV	118.3810, -11.0338, 39.1309
Hunter-Lab	42.1248, 18.5711, 10.6930

Details

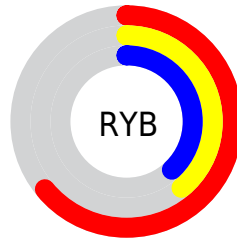
The YIQ color **118.3810, 38.8320, 12.1120** is a dark color, and the websafe version is hex **996666**. A complement of this color would be **140.6190, -38.8320, -12.1120**, and the grayscale version is **118.0000, 0.0000, -0.0000**.

A 20% lighter version of the original color is **171.6480, 42.4540, 12.5500**, and **68.8150, 34.6140, 11.4620** is the 20% darker color. If you saturate the color by 10%, you get **107.7520, 48.0930, 14.9810**, and if you desaturate by 10%, it is **129.0100, 29.5710, 9.2430**.

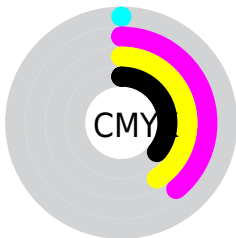
Distribution



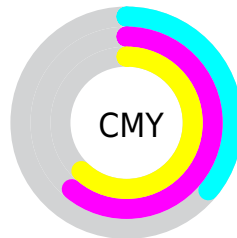
- Red (64%)
- Green (39%)
- Blue (38%)



- Red (64%)
- Yellow (39%)
- Blue (38%)



- Cyan (0%)
- Magenta (39%)
- Yellow (41%)
- Black (36%)



- Cyan (36%)
- Magenta (61%)
- Yellow (62%)

Brightness & Saturation Gradients

These gradients show how the YIQ color 118.3810, 38.8320, 12.1120 changes by changing the brightness by 10 percent. The first figure shows a shift by +10% for each color and the second figure -10%.

Similar to the brightness gradients but the following saturation gradients show a change of the YIQ color 118.3810, 38.8320, 12.1120 by changing the saturation by 10% instead.

■ 118.3810, 38.8320,
12.1120

■ 118.3810, 38.8320,
12.1120

■ 255.0000, -0.0000,
-0.0000

■ 92.8970, 37.3190,
11.9990

■ 171.7620, 42.1330,
12.8610

■ 68.8150, 34.6140,
11.4620

■ 199.2460, 43.6460,
12.9740

■ 45.1460, 32.1840,
11.4480

■ 219.9670, 31.1300,
8.5220

■ 21.2060, 31.9550,
10.0910

■ 240.2960, 13.8460,
2.3740

■ 10.5790, 20.5390,
7.7310

■ 0.0000, 0.0000,
0.0000

■ 118.3810, 38.8320,
12.1120

■ 118.3810, 38.8320,
12.1120

■ 107.7520, 48.0930,
14.9810

■ 129.0100, 29.5710,
9.2430

■ 96.4220, 57.9500,
18.0620

■ 140.3400, 19.7140,
6.1620

■ 85.7930, 67.2110,
20.9310

■ 150.9690, 10.4530,
3.2930

■ 75.1640, 76.4720,
23.8000

■ 161.5980, 1.1920,
0.4240

■ 63.9480, 86.0080,
27.1920

■ 172.9280, -8.6650,
-2.6570


■ 54.6070, 94.3980,
29.3260

■ 183.5570,
-17.9260, -5.5260

■ 194.1860,
-27.1870, -8.3950

■ 205.4020,

-36.7230, -11.7870

 216.1450,
-46.3050, -14.3450

Harmonies

Analogous

The Analogous color harmony consists of three colors that are next to each other on the color wheel.



119.9320, 30.2110, 19.6750



118.3810, 38.8320, 12.1120



116.7470, 37.3210, 0.9450

Triad

The Triadic color harmony groups three colors that are evenly spaced from another and form a triangle on the color wheel.



118.3810, 38.8320, 12.1120



109.3270, -14.9430, -21.0470



112.7570, -38.5600, 4.9920

Complementary

The Complementary color scheme is a pair of colors which are on the opposite of each other on the color wheel.



118.3810, 38.8320, 12.1120



140.6190, -38.8320, -12.1120

Split Complementary

Split-complementary colors differ from the complementary color scheme. The scheme consists of three colors, the original color and two neighbors of the complement color.



102.9230, -62.9950, -9.2270



118.3810, 38.8320, 12.1120



104.2560, -42.5440, -21.9360

Square

The Square scheme is like the rectangle color scheme, but the four colors are evenly spaced on the color wheel.



118.3810, 38.8320, 12.1120



112.9400, 8.2560, -17.4720



97.1360, -68.4490, -20.5210



118.2660, -11.8320, 16.2000

Rectangle

The Rectangle color scheme consists of four colors that form a rectangle on the color wheel.



118.3810, 38.8320, 12.1120



116.1820, 31.3620, -6.7020



97.1360, -68.4490, -20.5210



109.6310, -47.1330, 0.6670

Sweetspot

The Sweet Spot groups the original color and five complimentary colors.



118.3810, 38.8320, 12.1120



194.9480, 14.9460, 4.4660



123.3290, 19.3880, 34.1080



97.0720, 8.6650, 2.6570



235.0000, 0.0000, -0.0000



107.0000, -0.0000, 0.0000

Same Dimension

The Same Dimension uses a secret algorithm to generate beautiful new colors.



118.3810, 38.8320, 12.1120



142.6180, 60.3340, 18.9100



137.7520, 29.7570, -5.1470



76.2780, 5.0890, 1.3850



48.6380, 83.9450, 26.0330



5.9690, 10.4530, 3.2930

Inverse Universe

The Inverse Universe completely reimagines the original color for something new.



140.6190, -38.8320, -12.1120



177.3820, -60.3340, -18.9100



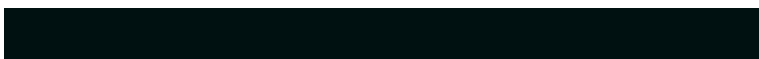
121.2480, -29.7570, 5.1470



78.7220, -5.0890, -1.3850



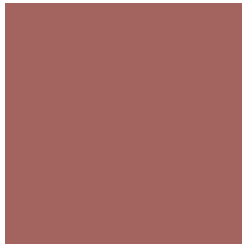
96.9490, -84.2200, -26.5560



12.0310, -10.4530, -3.2930

Previews

White Background



This preview shows how the YIQ color 118.3810, 38.8320, 12.1120 looks on a white background.

Color Contrast Check

Large Text (above 18pt) WCAG AA ✓ Pass

Any Text WCAG AA ✓ Pass

Large Text (above 18pt) WCAG AAA ✓ Pass

Any Text WCAG AAA × Fail

Black Background



This preview shows how the YIQ color 118.3810, 38.8320, 12.1120 looks on a black background.

Color Contrast Check

Large Text (above 18pt) WCAG AA ✓ Pass

Any Text WCAG AA ✓ Pass

Large Text (above 18pt) WCAG AAA ✓ Pass

Any Text WCAG AAA × Fail

If you want to check with other color combinations, try the [Color Contrast Checker](#).

YIQ 118.3810, 38.8320, 12.1120

Background



This preview shows how black text looks on a background with the YIQ color 118.3810, 38.8320, 12.1120.

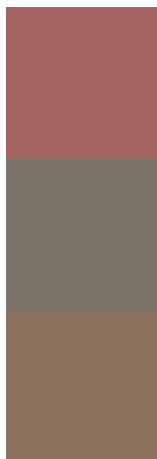


This preview shows how white text looks on a background with the YIQ color 118.3810, 38.8320,

Color Blindness Simulation

Color vision deficiency is a very complex topic, and I could not describe the different causes any better than Wikipedia does, so if you want to learn more, you should check out their [article about color blindness](#).

Dichromacy



Original Color

118.3810, 38.8320, 12.1120

Protanopia

117.0130, 7.1530, -2.9830

Deuteranopia

118.0100, 20.4030, -0.8210



Tritanopia

118.6460, 36.7680, 16.4800

Trichromacy



Original Color

118.3810, 38.8320, 12.1120

Protanomaly

117.6340, 18.7060, 2.4020

Deuteranomaly

117.8800, 26.8210, 4.0130

Tritanomaly

118.7770, 37.7770, 14.7130

Monochromacy



Original Color

118.3810, 38.8320, 12.1120

Achromatopsia

118.0000, 0.0000, -0.0000

Achromatomaly

117.7630, 14.0290, 4.5650

CSS Examples

Text

The CSS property to change the color of the text to YIQ 118.3810, 38.8320, 12.1120 is called "color". The color property can be set on classes, ids or directly on the HTML element.

This example shows how text in the color `rgb(163, 100, 96)` looks like.

```
.text, #text, p{  
    color:rgb(163, 100, 96)  
}
```

If you want to add a text shadow in that color use the text-shadow property, you can generate a text shadow directly with our [CSS Text Shadow Generator](#).

Here you see how black text with a 4 pixel rgb(163, 100, 96) colored shadow looks like.

```
.shadow{ text-shadow: 4px 4px 2px rgb(163, 100, 96) }
```

Border

The CSS property to change the border of an element to YIQ 118.3810, 38.8320, 12.1120 is called "border". The border property can be set on classes, ids or directly on the HTML element.

This example shows the color as border, it can be applied via the CSS property "border" or "border-color".

```
.border, #border, table{ border:4px solid rgb(163, 100, 96) }
```


If only the border color should be changed use the property border-color.

```
.border{ border-color:rgb(163, 100, 96) }
```

If you want to add a box shadow in that color use:

Here you see how a box with a 4 pixel rgb(163, 100, 96) colored shadow looks like.

```
.boxshadow{ -moz-box-shadow:4px 4px 4px  
4px rgb(163, 100, 96); -webkit-box-  
shadow:4px 4px 4px 4px rgb(163, 100, 96);  
box-shadow:4px 4px 4px 4px rgb(163, 100,  
96) }
```

Background

The CSS property to change the background color of an element to YIQ 118.3810, 38.8320, 12.1120 is called "background". The background property can be set on classes, ids or directly on the HTML element.

```
.background, #background, body{  
background: rgb(163, 100, 96) }
```

If only the background color should be changed can be used:

```
.background{ background-color: rgb(163,  
100, 96) }
```

This example shows the color as background, it is applied via the CSS property "background".

To optimize and compress your CSS code, you can use our [online CSS compressor and optimizer](#) based on csstidy. If you want to create a linear or radial gradient as background or border, check our [CSS Gradient Generator](#).

Hey! You found this booklet interesting? Support Converting Colors with the new Membership Option!

The pro membership hides all ads, plus gives you double the colors in the color bucket, and more awesome pro features!

[Learn more, Memberships starting at \\$2.50/m!](#)

**Follow me
on Twitter!**

@ConvertingColor