

Converting Colors

YIQ(123.7100, 38.7430, -2.8010)

Have a look what the booklet for
YIQ(123.7100, 38.7430, -2.8010)
contains.

YIQ(123.7100, 38.7430, -2.8010)	3
<i>Conversions</i>	4
<i>Details</i>	6
<i>Harmonies</i>	12
<i>Previews</i>	24
<i>Color Blindness Simulation</i>	28
<i>CSS Examples</i>	31

Color

**YIQ(123.7100, 38.7430,
-2.8010)**

Conversions

Conversions Part 1

Format	Color
Hex	9F734C
RGB	159, 115, 76
RGB Percent	62%, 45%, 30%
CMY	0.3764, 0.5491, 0.7018
CMYK	0.00, 0.28, 0.52, 0.38
HSL	28°, 35%, 46%
HSV	28°, 52%, 62%
XYZ	21.7369, 20.1527, 9.5902
YIQ	123.7100, 38.7430, -2.8010

Conversions

Conversions Part 2

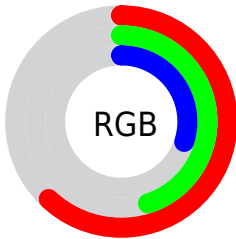
Format	Color
RYB	159, 150, 76
Decimal	10449740
CIELab	52.01, 12.62, 28.27
CIELCh	52, 30.962, 65.941
Yxy	20.1527, 0.4222, 0.3915
Android (android.graphics.Color)	4288639820 (0xFF9F734C)
YUV	123.7100, -23.5210, 30.9493
Hunter-Lab	44.8918, 7.8703, 18.7581

Details

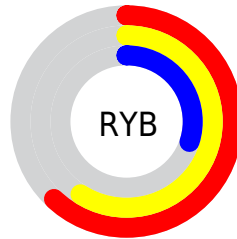
The YIQ color **123.7100, 38.7430, -2.8010** is a dark color, and the websafe version is hex **996633**. A complement of this color would be **111.2900, -38.7430, 2.8010**, and the grayscale version is **124.0000, -0.0000, -0.0000**.

A 20% lighter version of the original color is **176.9770, 42.3650, -2.3630**, and **74.1440, 34.5250, -3.4510** is the 20% darker color. If you saturate the color by 10%, you get **117.1900, 46.0790, -3.5930**, and if you desaturate by 10%, it is **130.2300, 31.4070, -2.0090**.

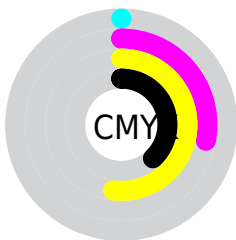
Distribution



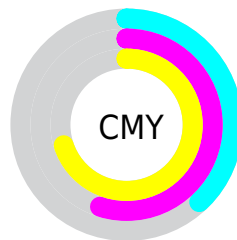
- Red (62%)
- Green (45%)
- Blue (30%)



- Red (62%)
- Yellow (59%)
- Blue (30%)



- Cyan (0%)
- Magenta (28%)
- Yellow (52%)
- Black (38%)



- Cyan (38%)
- Magenta (55%)
- Yellow (70%)

Brightness & Saturation Gradients

These gradients show how the YIQ color 123.7100, 38.7430, -2.8010 changes by changing the brightness by 10 percent. The first figure shows a shift by +10% for each color and the second figure -10%.

Similar to the brightness gradients but the following saturation gradients show a change of the YIQ color 123.7100, 38.7430, -2.8010 by changing the saturation by 10% instead.

■ 123.7100, 38.7430,
-2.8010

■ 123.7100, 38.7430,
-2.8010

■ 255.0000, -0.0000,
-0.0000

■ 98.3400, 36.9090,
-2.6030

■ 176.9770, 42.3650,
-2.3630

■ 74.1440, 34.5250,
-3.4510

■ 204.4610, 43.8780,
-2.2500

■ 50.9480, 32.1410,
-4.2990

■ 226.9650, 33.4710,
-6.3770

■ 30.2340, 25.5840,
-1.1040

■ 247.0660, 16.8290,
-13.1470

■ 9.2690, 18.4760,
6.5720

■ 252.7200, 6.4200,
-6.2200

■ 0.0000, 0.0000,
0.0000

■ 123.7100, 38.7430,
-2.8010

■ 123.7100, 38.7430,
-2.8010

■ 117.1900, 46.0790,
-3.5930

■ 130.2300, 31.4070,
-2.0090

■ 110.0830, 53.6900,
-3.8620

■ 137.3370, 23.7960,
-1.7400

■ 103.5630, 61.0260,
-4.6540

■ 143.8570, 16.4600,
-0.9480

■ 96.4560, 68.6370,
-4.9230

■ 150.9640, 8.8490,
-0.6790

■ 91.5660, 74.1390,
-5.5170

■ 157.4840, 1.5130,
0.1130

■ 164.4770, -5.7770,
0.0710

■ 170.9970,
-13.1130, 0.8630

■ 178.1040,

-20.7240, 1.1320

■ 184.6240,
-28.0600, 1.9240

Harmonies

Analogous

The Analogous color harmony consists of three colors that are next to each other on the color wheel.



125.2520, 43.5090, 9.9490



123.7100, 38.7430, -2.8010



121.5460, 24.1650, -13.9390

Triad

The Triadic color harmony groups three colors that are evenly spaced from another and form a triangle on the color wheel.



123.7100, 38.7430, -2.8010



106.1770, -58.4990, -24.6350



126.6090, -5.3680, 20.2000

Complementary

The Complementary color scheme is a pair of colors which are on the opposite of each other on the color wheel.



123.7100, 38.7430, -2.8010



111.2900, -38.7430, 2.8010

Split Complementary

Split-complementary colors differ from the complementary color scheme. The scheme consists of three colors, the original color and two neighbors of the complement color.



121.5450, -34.8470, 9.2890



123.7100, 38.7430, -2.8010



97.9750, -87.1090, -23.7570

Square

The Square scheme is like the rectangle color scheme, but the four colors are evenly spaced on the color wheel.



123.7100, 38.7430, -2.8010



113.8850, -25.4420, -23.5060



110.8350, -65.5630, -6.7390



127.8910, 20.2610, 23.7890

Rectangle

The Rectangle color scheme consists of four colors that form a rectangle on the color wheel.



123.7100, 38.7430, -2.8010



119.5550, 10.7780, -19.1260



110.8350, -65.5630, -6.7390



125.3520, -14.9500, 17.6420

Sweetspot

The Sweet Spot groups the original color and five complimentary colors.



123.7100, 38.7430, -2.8010



192.6720, 15.5430, -0.8490



105.8330, 35.3440, 31.2800



96.2630, 9.4450, -0.4670



232.0000, -0.0000, 0.0000



105.0000, 0.0000, 0.0000

Same Dimension

The Same Dimension uses a secret algorithm to generate beautiful new colors.



123.7100, 38.7430, -2.8010



150.9760, 61.3010, -4.1310



147.7770, 27.4680, -24.2440



75.7400, 3.6680, -0.3960



82.0860, 66.8030, -4.7250



8.5940, 7.0150, -0.4810

Inverse Universe

The Inverse Universe completely reimagines the original color for something new.



111.2900, -38.7430, 2.8010



131.4370, -61.0260, 4.6540



87.2230, -27.4680, 24.2440



74.2600, -3.6680, 0.3960



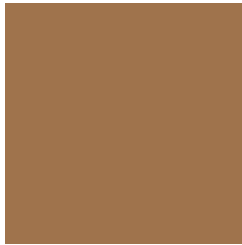
60.9140, -66.8030, 4.7250



6.4060, -7.0150, 0.4810

Previews

White Background



This preview shows how the YIQ color 123.7100, 38.7430, -2.8010 looks on a white background.

Color Contrast Check

Large Text (above 18pt) WCAG AA ✓ Pass

Any Text WCAG AA × Fail

Large Text (above 18pt) WCAG AAA × Fail

Any Text WCAG AAA × Fail

Black Background



This preview shows how the YIQ color 123.7100, 38.7430, -2.8010 looks on a black background.

Color Contrast Check

Large Text (above 18pt) WCAG AA ✓ Pass

Any Text WCAG AA ✓ Pass

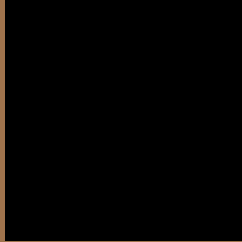
Large Text (above 18pt) WCAG AAA ✓ Pass

Any Text WCAG AAA × Fail

If you want to check with other color combinations, try the [Color Contrast Checker](#).

YIQ 123.7100, 38.7430, -2.8010

Background



This preview shows how black text looks on a background with the YIQ color 123.7100, 38.7430, -2.8010.



This preview shows how white text looks on a background with the YIQ color 123.7100, 38.7430, -2.8010.

-2.8010.

Color Blindness Simulation

Color vision deficiency is a very complex topic, and I could not describe the different causes any better than Wikipedia does, so if you want to learn more, you should check out their [article about color blindness](#).

Dichromacy



Original Color

123.7100, 38.7430, -2.8010

Protanopia

122.2730, 20.6800, -11.3520

Deuteranopia

123.5520, 33.1960, -6.9000



Tritanopia

126.7590, 29.0200, 13.7240

Trichromacy



Original Color

123.7100, 38.7430, -2.8010

Protanomaly

123.0890, 27.1900, -8.1860

Deuteranomaly

123.8620, 35.2590, -5.7410

Tritanomaly

125.9240, 32.6890, 7.8010

Monochromacy



Original Color

123.7100, 38.7430, -2.8010

Achromatopsia

124.0000, -0.0000, -0.0000

Achromatomaly

124.1880, 14.0300, -0.9620

CSS Examples

Text

The CSS property to change the color of the text to YIQ 123.7100, 38.7430, -2.8010 is called "color". The color property can be set on classes, ids or directly on the HTML element.

This example shows how text in the color `rgb(159, 115, 76)` looks like.

```
.text, #text, p{  
    color:rgb(159, 115, 76)  
}
```

If you want to add a text shadow in that color use the text-shadow property, you can generate a text shadow directly with our [CSS Text Shadow Generator](#).

Here you see how black text with a 4 pixel rgb(159, 115, 76) colored shadow looks like.

```
.shadow{ text-shadow: 4px 4px 2px rgb(159, 115, 76) }
```

Border

The CSS property to change the border of an element to YIQ 123.7100, 38.7430, -2.8010 is called "border". The border property can be set on classes, ids or directly on the HTML element.

This example shows the color as border, it can be applied via the CSS property "border" or "border-color".

```
.border, #border, table{ border:4px solid rgb(159, 115, 76) }
```


If only the border color should be changed use the property border-color.

```
.border{ border-color:rgb(159, 115, 76) }
```

If you want to add a box shadow in that color use:

Here you see how a box with a 4 pixel rgb(159, 115, 76) colored shadow looks like.

```
.boxshadow{ -moz-box-shadow:4px 4px 4px  
4px rgb(159, 115, 76); -webkit-box-  
shadow:4px 4px 4px 4px rgb(159, 115, 76);  
box-shadow:4px 4px 4px 4px rgb(159, 115,  
76) }
```

Background

The CSS property to change the background color of an element to YIQ 123.7100, 38.7430, -2.8010 is called "background". The background property can be set on classes, ids or directly on the HTML element.

```
.background, #background, body{  
background: rgb(159, 115, 76) }
```

If only the background color should be changed can be used:

```
.background{ background-color: rgb(159,  
115, 76) }
```

This example shows the color as background, it is applied via the CSS property "background".

To optimize and compress your CSS code, you can use our [online CSS compressor and optimizer](#) based on csstidy. If you want to create a linear or radial gradient as background or border, check our [CSS Gradient Generator](#).

Hey! You found this booklet interesting? Support Converting Colors with the new Membership Option!

The pro membership hides all ads, plus gives you double the colors in the color bucket, and more awesome pro features!

[Learn more, Memberships starting at \\$2.50/m!](#)

**Follow me
on Twitter!**

@ConvertingColor