

Converting Colors

YIQ(124.3120, 34.1120, -1.4720)

Have a look what the booklet for
YIQ(124.3120, 34.1120, -1.4720)
contains.

YIQ(124.3120, 34.1120, -1.4720)	3
<i>Conversions</i>	4
<i>Details</i>	6
<i>Harmonies</i>	12
<i>Previews</i>	24
<i>Color Blindness Simulation</i>	28
<i>CSS Examples</i>	31

Color

**YIQ(124.3120, 34.1120,
-1.4720)**

Conversions

Conversions Part 1

Format	Color
Hex	9C7454
RGB	156, 116, 84
RGB Percent	61%, 45%, 33%
CMY	0.3882, 0.5451, 0.6704
CMYK	0.00, 0.26, 0.46, 0.39
HSL	27°, 30%, 47%
HSV	27°, 46%, 61%
XYZ	21.5593, 20.1975, 11.1581
YIQ	124.3120, 34.1120, -1.4720

Conversions

Conversions Part 2

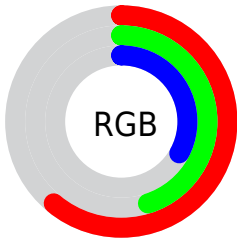
Format	Color
RYB	156, 142, 84
Decimal	10253396
CIELab	52.06, 11.57, 23.75
CIElCh	52, 26.420, 64.028
Yxy	20.1975, 0.4074, 0.3817
Android (android.graphics.Color)	4288443476 (0xFF9C7454)
YUV	124.3120, -19.8738, 27.7904
Hunter-Lab	44.9416, 6.9819, 16.7386

Details

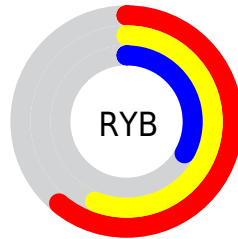
The YIQ color **124.3120, 34.1120, -1.4720** is a dark color, and the websafe version is hex **996633**. A complement of this color would be **115.6880, -34.1120, 1.4720**, and the grayscale version is **124.0000, -0.0000, -0.0000**.

A 20% lighter version of the original color is **177.2800, 37.1380, -1.2460**, and **75.0450, 30.4900, -1.9100** is the 20% darker color. If you saturate the color by 10%, you get **117.2050, 41.7230, -1.7410**, and if you desaturate by 10%, it is **131.4190, 26.5010, -1.2030**.

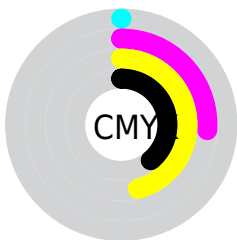
Distribution



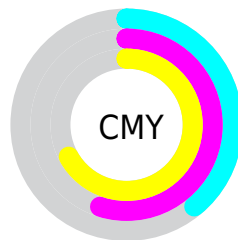
- Red (61%)
- Green (45%)
- Blue (33%)



- Red (61%)
- Yellow (56%)
- Blue (33%)



- Cyan (0%)
- Magenta (26%)
- Yellow (46%)
- Black (39%)



- Cyan (39%)
- Magenta (55%)
- Yellow (67%)

Brightness & Saturation Gradients

These gradients show how the YIQ color 124.3120, 34.1120, -1.4720 changes by changing the brightness by 10 percent. The first figure shows a shift by +10% for each color and the second figure -10%.

Similar to the brightness gradients but the following saturation gradients show a change of the YIQ color 124.3120, 34.1120, -1.4720 by changing the saturation by 10% instead.

124.3120, 34.1120,
-1.4720

124.3120, 34.1120,
-1.4720

255.0000, -0.0000,
-0.0000

98.9420, 32.2780,
-1.2740

177.2800, 37.1380,
-1.2460

75.0450, 30.4900,
-1.9100

204.7640, 38.6510,
-1.1330

51.3760, 28.0600,
-1.9240

228.4640, 30.6280,
-4.4120

29.9350, 24.9880,
-1.3160

248.6790, 13.6650,
-10.8710

8.9700, 17.8800,
6.3600

253.7460, 3.5310,
-3.4210

0.0000, 0.0000,
0.0000

■ 124.3120, 34.1120,
-1.4720

■ 124.3120, 34.1120,
-1.4720

■ 117.2050, 41.7230,
-1.7410

■ 131.4190, 26.5010,
-1.2030

■ 110.7990, 48.7380,
-2.2220

■ 137.8250, 19.4860,
-0.7220

■ 103.6920, 56.3490,
-2.4910

■ 144.9320, 11.8750,
-0.4530

■ 96.6990, 63.6390,
-2.4490

■ 151.9250, 4.5850,
-0.4950

■ 90.1790, 70.9750,
-3.2410

■ 158.4450, -2.7510,
0.2970

■ 87.1470, 74.0010,
-3.0150

■ 165.5520,
-10.3620, 0.5660

■ 172.5450,
-17.6520, 0.5240

■ 179.0650,

-24.9880, 1.3160

■ 186.0580,
-32.2780, 1.2740

Harmonies

Analogous

The Analogous color harmony consists of three colors that are next to each other on the color wheel.



125.3160, 37.4570, 9.4970



124.3120, 34.1120, -1.4720



122.7570, 22.1930, -11.2390

Triad

The Triadic color harmony groups three colors that are evenly spaced from another and form a triangle on the color wheel.



124.3120, 34.1120, -1.4720



112.5380, -43.2780, -19.6460



126.3160, -6.1010, 16.9630

Complementary

The Complementary color scheme is a pair of colors which are on the opposite of each other on the color wheel.



124.3120, 34.1120, -1.4720



115.6880, -34.1120, 1.4720

Split Complementary

Split-complementary colors differ from the complementary color scheme. The scheme consists of three colors, the original color and two neighbors of the complement color.



121.9430, -30.2160, 7.9600



124.3120, 34.1120, -1.4720



110.2730, -58.4090, -15.2490

Square

The Square scheme is like the rectangle color scheme, but the four colors are evenly spaced on the color wheel.



124.3120, 34.1120, -1.4720



116.8150, -19.2530, -20.0290



115.0170, -51.3960, -4.6760



127.3310, 15.9060, 20.1140

Rectangle

The Rectangle color scheme consists of four colors that form a rectangle on the color wheel.



124.3120, 34.1120, -1.4720



120.6630, 10.5940, -15.7900



115.0170, -51.3960, -4.6760



125.4290, -13.8490, 14.2070

Sweetspot

The Sweet Spot groups the original color and five complimentary colors.



124.3120, 34.1120, -1.4720



191.3020, 13.7090, -0.6510



110.2020, 29.7510, 28.0150



94.1920, 8.2070, -0.0570



230.0000, -0.0000, 0.0000



102.0000, -0.0000, -0.0000

Same Dimension

The Same Dimension uses a secret algorithm to generate beautiful new colors.



124.3120, 34.1120, -1.4720



154.8380, 53.0020, -2.4060



144.8570, 24.4870, -19.7770



75.7400, 3.6680, -0.3960



79.7380, 67.9030, -2.6330



8.5940, 7.0150, -0.4810

Inverse Universe

The Inverse Universe completely reimagines the original color for something new.



115.6880, -34.1120, 1.4720



141.1620, -53.0020, 2.4060



95.1430, -24.4870, 19.7770



74.8470, -3.9430, -0.1270



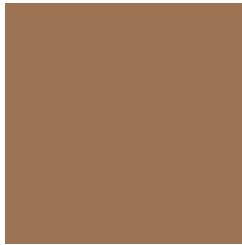
62.6750, -67.6280, 3.1560



6.9930, -7.2900, -0.0420

Previews

White Background



This preview shows how the YIQ color 124.3120, 34.1120, -1.4720 looks on a white background.

Color Contrast Check

Large Text (above 18pt) WCAG AA ✓ Pass

Any Text WCAG AA × Fail

Large Text (above 18pt) WCAG AAA × Fail

Any Text WCAG AAA × Fail

Black Background



This preview shows how the YIQ color 124.3120, 34.1120, -1.4720 looks on a black background.

Color Contrast Check

Large Text (above 18pt) WCAG AA ✓ Pass

Any Text WCAG AA ✓ Pass

Large Text (above 18pt) WCAG AAA ✓ Pass

Any Text WCAG AAA × Fail

If you want to check with other color combinations, try the [Color Contrast Checker](#).

YIQ 124.3120, 34.1120, -1.4720

Background



This preview shows how black text looks on a background with the YIQ color 124.3120, 34.1120, -1.4720.



This preview shows how white text looks on a background with the YIQ color 124.3120, 34.1120, -1.4720.

-1.4720.

Color Blindness Simulation

Color vision deficiency is a very complex topic, and I could not describe the different causes any better than Wikipedia does, so if you want to learn more, you should check out their [article about color blindness](#).

Dichromacy



Original Color

124.3120, 34.1120, -1.4720

Protanopia

122.8860, 17.5160, -9.0760

Deuteranopia

123.8660, 29.4360, -4.8360



Tritanopia

126.3780, 25.7190, 12.9750

Trichromacy



Original Color

124.3120, 34.1120, -1.4720

Protanomaly

123.4030, 23.4300, -6.1220

Deuteranomaly

124.1760, 31.4990, -3.6770

Tritanomaly

125.7710, 28.7460, 7.6740

Monochromacy



Original Color

124.3120, 34.1120, -1.4720

Achromatopsia

124.0000, -0.0000, -0.0000

Achromatomaly

124.1170, 12.7920, -0.5520

CSS Examples

Text

The CSS property to change the color of the text to YIQ 124.3120, 34.1120, -1.4720 is called "color". The color property can be set on classes, ids or directly on the HTML element.

This example shows how text in the color `rgb(156, 116, 84)` looks like.

```
.text, #text, p{  
    color:rgb(156, 116, 84)  
}
```

If you want to add a text shadow in that color use the text-shadow property, you can generate a text shadow directly with our [CSS Text Shadow Generator](#).

Here you see how black text with a 4 pixel rgb(156, 116, 84) colored shadow looks like.

```
.shadow{ text-shadow: 4px 4px 2px rgb(156, 116, 84) }
```

Border

The CSS property to change the border of an element to YIQ 124.3120, 34.1120, -1.4720 is called "border". The border property can be set on classes, ids or directly on the HTML element.

This example shows the color as border, it can be applied via the CSS property "border" or "border-color".

```
.border, #border, table{ border:4px solid rgb(156, 116, 84) }
```


If only the border color should be changed use the property border-color.

```
.border{ border-color:rgb(156, 116, 84) }
```

If you want to add a box shadow in that color use:

Here you see how a box with a 4 pixel rgb(156, 116, 84) colored shadow looks like.

```
.boxshadow{ -moz-box-shadow:4px 4px 4px  
4px rgb(156, 116, 84); -webkit-box-  
shadow:4px 4px 4px 4px rgb(156, 116, 84);  
box-shadow:4px 4px 4px 4px rgb(156, 116,  
84) }
```

Background

The CSS property to change the background color of an element to YIQ 124.3120, 34.1120, -1.4720 is called "background". The background property can be set on classes, ids or directly on the HTML element.

```
.background, #background, body{  
background: rgb(156, 116, 84) }
```

If only the background color should be changed can be used:

```
.background{ background-color: rgb(156,  
116, 84) }
```

This example shows the color as background, it is applied via the CSS property "background".

To optimize and compress your CSS code, you can use our [online CSS compressor and optimizer](#) based on csstidy. If you want to create a linear or radial gradient as background or border, check our [CSS Gradient Generator](#).

Hey! You found this booklet interesting? Support Converting Colors with the new Membership Option!

The pro membership hides all ads, plus gives you double the colors in the color bucket, and more awesome pro features!

[Learn more, Memberships starting at \\$2.50/m!](#)

**Follow me
on Twitter!**

@ConvertingColor