

Converting Colors

YIQ(124.7210, 40.2100, -1.8540)

Have a look what the booklet for
YIQ(124.7210, 40.2100, -1.8540)
contains.

YIQ(124.7210, 40.2100, -1.8540)	3
<i>Conversions</i>	4
<i>Details</i>	6
<i>Harmonies</i>	12
<i>Previews</i>	24
<i>Color Blindness Simulation</i>	28
<i>CSS Examples</i>	31

Color

**YIQ(124.7210, 40.2100,
-1.8540)**

Conversions

Conversions Part 1

Format	Color
Hex	A2734D
RGB	162, 115, 77
RGB Percent	64%, 45%, 30%
CMY	0.3646, 0.5491, 0.6978
CMYK	0.00, 0.29, 0.52, 0.36
HSL	27°, 36%, 47%
HSV	27°, 52%, 64%
XYZ	22.3746, 20.4772, 9.8033
YIQ	124.7210, 40.2100, -1.8540

Conversions

Conversions Part 2

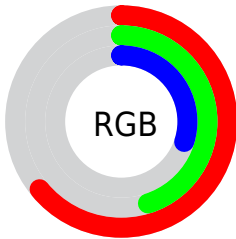
Format	Color
R_{YB}	162, 146, 77
Decimal	10646349
CIE _{Lab}	52.37, 14.02, 28.24
CIE _{LCh}	52, 31.531, 63.603
Yxy	20.4772, 0.4249, 0.3889
Android (android.graphics.Color)	4288836429 (0xFFA2734D)
YUV	124.7210, -23.5265, 32.6937
Hunter-Lab	45.2517, 9.0683, 18.8316

Details

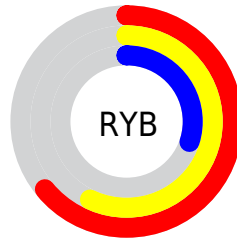
The YIQ color **124.7210, 40.2100, -1.8540** is a dark color, and the websafe version is hex **996633**. A complement of this color would be **114.2790, -40.2100, 1.8540**, and the grayscale version is **125.0000, 0.0000, 0.0000**.

A 20% lighter version of the original color is **177.9880, 43.8320, -1.4160**, and **75.1550, 35.9920, -2.5040** is the 20% darker color. If you saturate the color by 10%, you get **117.6140, 47.8210, -2.1230**, and if you desaturate by 10%, it is **131.8280, 32.5990, -1.5850**.

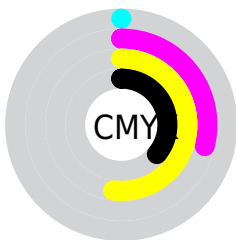
Distribution



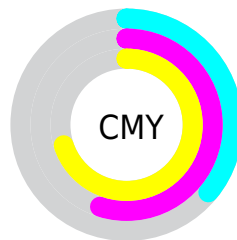
- Red (64%)
- Green (45%)
- Blue (30%)



- Red (64%)
- Yellow (57%)
- Blue (30%)



- Cyan (0%)
- Magenta (29%)
- Yellow (52%)
- Black (36%)



- Cyan (36%)
- Magenta (55%)
- Yellow (70%)

Brightness & Saturation Gradients

These gradients show how the YIQ color 124.7210, 40.2100, -1.8540 changes by changing the brightness by 10 percent. The first figure shows a shift by +10% for each color and the second figure -10%.

Similar to the brightness gradients but the following saturation gradients show a change of the YIQ color 124.7210, 40.2100, -1.8540 by changing the saturation by 10% instead.

■ 124.7210, 40.2100,
-1.8540

■ 124.7210, 40.2100,
-1.8540

■ 255.0000, -0.0000,
-0.0000

■ 99.0520, 37.7800,
-1.8680

■ 177.9880, 43.8320,
-1.4160

■ 75.1550, 35.9920,
-2.5040

■ 205.4720, 45.3450,
-1.3030

■ 51.0730, 33.2870,
-3.0410

■ 227.0790, 33.1500,
-6.0660

■ 30.2450, 27.0510,
-0.1570

■ 247.1800, 16.5080,
-12.8360

■ 9.8670, 19.6680,
6.9960

■ 252.8340, 6.0990,
-5.9090

■ 0.0000, 0.0000,
0.0000

■ 124.7210, 40.2100,
-1.8540

■ 124.7210, 40.2100,
-1.8540

■ 117.6140, 47.8210,
-2.1230

■ 131.8280, 32.5990,
-1.5850

■ 110.5070, 55.4320,
-2.3920

■ 138.9350, 24.9880,
-1.3160

■ 103.2860, 63.3640,
-2.9720

■ 146.1560, 17.0560,
-0.7360

■ 96.1790, 70.9750,
-3.2410

■ 153.2630, 9.4450,
-0.4670

■ 90.7020, 76.7520,
-3.3120

■ 160.3700, 1.8340,
-0.1980

■ 167.4770, -5.7770,
0.0710

■ 174.5840,
-13.3880, 0.3400

■ 181.8050,

-21.3200, 0.9200

■ 188.9120,
-28.9310, 1.1890

Harmonies

Analogous

The Analogous color harmony consists of three colors that are next to each other on the color wheel.



126.0780, 44.0590, 10.9950



124.7210, 40.2100, -1.8540



122.3290, 26.2740, -13.6140

Triad

The Triadic color harmony groups three colors that are evenly spaced from another and form a triangle on the color wheel.



124.7210, 40.2100, -1.8540



106.8350, -57.5360, -25.5680



127.5270, -8.0730, 19.6630

Complementary

The Complementary color scheme is a pair of colors which are on the opposite of each other on the color wheel.



124.7210, 40.2100, -1.8540



114.2790, -40.2100, 1.8540

Split Complementary

Split-complementary colors differ from the complementary color scheme. The scheme consists of three colors, the original color and two neighbors of the complement color.



121.8650, -38.7440, 8.3280



124.7210, 40.2100, -1.8540



98.5620, -87.3840, -24.2800

Square

The Square scheme is like the rectangle color scheme, but the four colors are evenly spaced on the color wheel.



124.7210, 40.2100, -1.8540



115.1410, -23.2870, -24.0150



109.4430, -70.3310, -8.4350



128.8200, 19.0230, 24.1990

Rectangle

The Rectangle color scheme consists of four colors that form a rectangle on the color wheel.



124.7210, 40.2100, -1.8540



120.9250, 12.6120, -19.3240



109.4430, -70.3310, -8.4350



125.8570, -17.9300, 16.5820

Sweetspot

The Sweet Spot groups the original color and five complimentary colors.



124.7210, 40.2100, -1.8540



196.9710, 16.1390, -0.6370



107.8870, 35.2520, 32.9480



98.2630, 9.4450, -0.4670



235.0000, 0.0000, -0.0000



107.0000, -0.0000, 0.0000

Same Dimension

The Same Dimension uses a secret algorithm to generate beautiful new colors.



124.7210, 40.2100, -1.8540



153.2860, 63.3640, -2.9720



148.7880, 28.9350, -23.2970



78.0390, 4.2640, -0.1840



81.5100, 68.5450, -3.2550



10.0780, 8.5280, -0.3680

Inverse Universe

The Inverse Universe completely reimagines the original color for something new.



114.2790, -40.2100, 1.8540



136.7140, -63.3640, 2.9720



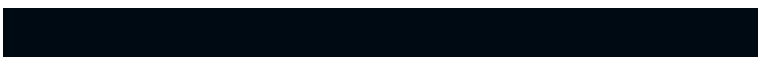
90.2120, -28.9350, 23.2970



76.9610, -4.2640, 0.1840



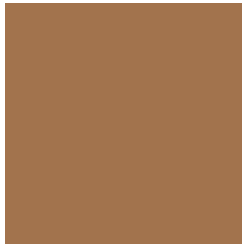
63.4900, -68.5450, 3.2550



7.9220, -8.5280, 0.3680

Previews

White Background



This preview shows how the YIQ color 124.7210, 40.2100, -1.8540 looks on a white background.

Color Contrast Check

Large Text (above 18pt) WCAG AA ✓ Pass

Any Text WCAG AA × Fail

Large Text (above 18pt) WCAG AAA × Fail

Any Text WCAG AAA × Fail

Black Background



This preview shows how the YIQ color 124.7210, 40.2100, -1.8540 looks on a black background.

Color Contrast Check

Large Text (above 18pt) WCAG AA ✓ Pass

Any Text WCAG AA ✓ Pass

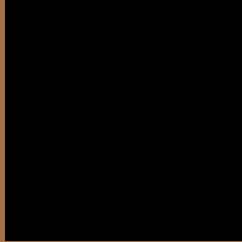
Large Text (above 18pt) WCAG AAA ✓ Pass

Any Text WCAG AAA × Fail

If you want to check with other color combinations, try the [Color Contrast Checker](#).

YIQ 124.7210, 40.2100, -1.8540

Background



This preview shows how black text looks on a background with the YIQ color 124.7210, 40.2100, -1.8540.



This preview shows how white text looks on a background with the YIQ color 124.7210, 40.2100, -1.8540.

-1.8540.

Color Blindness Simulation

Color vision deficiency is a very complex topic, and I could not describe the different causes any better than Wikipedia does, so if you want to learn more, you should check out their [article about color blindness](#).

Dichromacy



Original Color

124.7210, 40.2100, -1.8540

Protanopia

123.2730, 20.6800, -11.3520

Deuteranopia

124.5520, 33.1960, -6.9000



Tritanopia

127.3570, 30.2120, 14.1480

Trichromacy



Original Color

124.7210, 40.2100, -1.8540

Protanomaly

123.5020, 27.4650, -7.6630

Deuteranomaly

124.5740, 36.1300, -5.0060

Tritanomaly

126.5220, 33.8810, 8.2250

Monochromacy



Original Color

124.7210, 40.2100, -1.8540

Achromatopsia

125.0000, 0.0000, 0.0000

Achromatomaly

124.6010, 14.3050, -0.4390

CSS Examples

Text

The CSS property to change the color of the text to YIQ 124.7210, 40.2100, -1.8540 is called "color". The color property can be set on classes, ids or directly on the HTML element.

This example shows how text in the color `rgb(162, 115, 77)` looks like.

```
.text, #text, p{  
    color:rgb(162, 115, 77)  
}
```

If you want to add a text shadow in that color use the text-shadow property, you can generate a text shadow directly with our [CSS Text Shadow Generator](#).

Here you see how black text with a 4 pixel rgb(162, 115, 77) colored shadow looks like.

```
.shadow{ text-shadow: 4px 4px 2px rgb(162, 115, 77) }
```

Border

The CSS property to change the border of an element to YIQ 124.7210, 40.2100, -1.8540 is called "border". The border property can be set on classes, ids or directly on the HTML element.

This example shows the color as border, it can be applied via the CSS property "border" or "border-color".

```
.border, #border, table{ border:4px solid rgb(162, 115, 77) }
```


If only the border color should be changed use the property border-color.

```
.border{ border-color:rgb(162, 115, 77) }
```

If you want to add a box shadow in that color use:

Here you see how a box with a 4 pixel rgb(162, 115, 77) colored shadow looks like.

```
.boxshadow{ -moz-box-shadow:4px 4px 4px  
4px rgb(162, 115, 77); -webkit-box-  
shadow:4px 4px 4px 4px rgb(162, 115, 77);  
box-shadow:4px 4px 4px 4px rgb(162, 115,  
77) }
```

Background

The CSS property to change the background color of an element to YIQ 124.7210, 40.2100, -1.8540 is called "background". The background property can be set on classes, ids or directly on the HTML element.

```
.background, #background, body{  
background: rgb(162, 115, 77) }
```

If only the background color should be changed can be used:

```
.background{ background-color: rgb(162,  
115, 77) }
```

This example shows the color as background, it is applied via the CSS property "background".

To optimize and compress your CSS code, you can use our [online CSS compressor and optimizer](#) based on csstidy. If you want to create a linear or radial gradient as background or border, check our [CSS Gradient Generator](#).

Hey! You found this booklet interesting? Support Converting Colors with the new Membership Option!

The pro membership hides all ads, plus gives you double the colors in the color bucket, and more awesome pro features!

[Learn more, Memberships starting at \\$2.50/m!](#)

**Follow me
on Twitter!**

@ConvertingColor