

Converting Colors

YIQ(124.8820, 32.5070, 0.0830)

Have a look what the booklet for
YIQ(124.8820, 32.5070, 0.0830)
contains.

YIQ(124.8820, 32.5070, 0.0830)	3
<i>Conversions</i>	4
<i>Details</i>	6
<i>Harmonies</i>	12
<i>Previews</i>	24
<i>Color Blindness Simulation</i>	28
<i>CSS Examples</i>	31

Color

**YIQ(124.8820, 32.5070,
0.0830)**

Conversions

Conversions Part 1

Format	Color
Hex	9C7459
RGB	156, 116, 89
RGB Percent	61%, 45%, 35%
CMY	0.3882, 0.5451, 0.6508
CMYK	0.00, 0.26, 0.43, 0.39
HSL	24°, 27%, 48%
HSV	24°, 43%, 61%
XYZ	21.7624, 20.2787, 12.2268
YIQ	124.8820, 32.5070, 0.0830

Conversions

Conversions Part 2

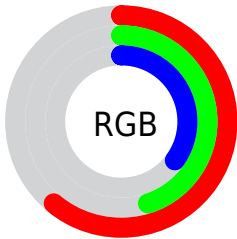
Format	Color
R_{YB}	156, 134, 89
Decimal	10253401
CIE Lab	52.15, 12.13, 21.01
CIE LCh	52, 24.263, 59.998
Yxy	20.2787, 0.4010, 0.3737
Android (android.graphics.Color)	4288443481 (0xFF9C7459)
YUV	124.8820, -17.6898, 27.2905
Hunter-Lab	45.0319, 7.4572, 15.4243

Details

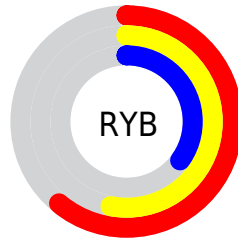
The YIQ color **124.8820, 32.5070, 0.0830** is a dark color, and the websafe version is hex **996666**. A complement of this color would be **120.1180, -32.5070, -0.0830**, and the grayscale version is **125.0000, 0.0000, 0.0000**.

A 20% lighter version of the original color is **177.8500, 35.5330, 0.3090**, and **75.6150, 28.8850, -0.3550** is the 20% darker color. If you saturate the color by 10%, you get **117.7750, 40.1180, -0.1860**, and if you desaturate by 10%, it is **131.9890, 24.8960, 0.3520**.

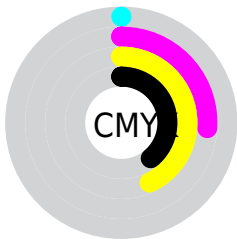
Distribution



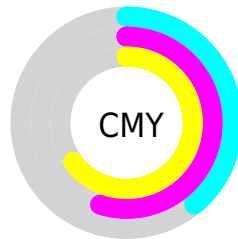
- Red (61%)
- Green (45%)
- Blue (35%)



- Red (61%)
- Yellow (53%)
- Blue (35%)



- Cyan (0%)
- Magenta (26%)
- Yellow (43%)
- Black (39%)



- Cyan (39%)
- Magenta (55%)
- Yellow (65%)

Brightness & Saturation Gradients

These gradients show how the YIQ color 124.8820, 32.5070, 0.0830 changes by changing the brightness by 10 percent. The first figure shows a shift by +10% for each color and the second figure -10%.

Similar to the brightness gradients but the following saturation gradients show a change of the YIQ color 124.8820, 32.5070, 0.0830 by changing the saturation by 10% instead.

124.8820, 32.5070,
0.0830

124.8820, 32.5070,
0.0830

255.0000, -0.0000,
-0.0000

99.3980, 30.9940,
-0.0300

177.8500, 35.5330,
0.3090

75.6150, 28.8850,
-0.3550

205.4480, 36.7250,
0.7330

51.9460, 26.4550,
-0.3690

229.1480, 28.7020,
-2.5460

30.2340, 25.5840,
-1.1040

249.3630, 11.7390,
-9.0050

8.9700, 17.8800,
6.3600

254.3160, 1.9260,
-1.8660

0.0000, 0.0000,
0.0000

■ 124.8820, 32.5070,
0.0830

■ 124.8820, 32.5070,
0.0830

■ 117.7750, 40.1180,
-0.1860

■ 131.9890, 24.8960,
0.3520

■ 110.1950, 47.6830,
0.3790

■ 139.5690, 17.3310,
-0.2130

■ 103.0880, 55.2940,
0.1100

■ 146.6760, 9.7200,
0.0560

■ 96.0950, 62.5840,
0.1520

■ 153.6690, 2.4300,
0.0140

■ 88.4010, 70.4700,
0.4060

■ 161.3630, -5.4560,
-0.2400

■ 83.6250, 75.6510,
0.1230

■ 168.4700,
-13.0670, 0.0290

■ 175.4630,
-20.3570, -0.0130

■ 183.1570,

-28.2430, -0.2670

■ 190.1500,
-35.5330, -0.3090

Harmonies

Analogous

The Analogous color harmony consists of three colors that are next to each other on the color wheel.



125.8750, 34.3850, 10.1050



124.8820, 32.5070, 0.0830



123.2240, 22.3760, -9.0480

Triad

The Triadic color harmony groups three colors that are evenly spaced from another and form a triangle on the color wheel.



124.8820, 32.5070, 0.0830



114.8980, -35.4840, -17.7240



126.0660, -8.3930, 14.4470

Complementary

The Complementary color scheme is a pair of colors which are on the opposite of each other on the color wheel.



124.8820, 32.5070, 0.0830



120.1180, -32.5070, -0.0830

Split Complementary

Split-complementary colors differ from the complementary color scheme. The scheme consists of three colors, the original color and two neighbors of the complement color.



121.8890, -30.1240, 6.2920



124.8820, 32.5070, 0.0830



112.7040, -49.3770, -13.7370

Square

The Square scheme is like the rectangle color scheme, but the four colors are evenly spaced on the color wheel.



124.8820, 32.5070, 0.0830



118.2070, -14.4850, -18.3330



116.0560, -47.1320, -4.8600



127.4230, 12.6510, 18.5310

Rectangle

The Rectangle color scheme consists of four colors that form a rectangle on the color wheel.



124.8820, 32.5070, 0.0830



121.6140, 12.2900, -13.4860



116.0560, -47.1320, -4.8600



125.4780, -15.5450, 11.9030

Sweetspot

The Sweet Spot groups the original color and five complimentary colors.



124.8820, 32.5070, 0.0830



191.5300, 13.0670, -0.0290



113.5930, 27.0920, 26.6440



94.3060, 7.8860, 0.2540



230.0000, -0.0000, 0.0000



102.0000, -0.0000, -0.0000

Same Dimension

The Same Dimension uses a secret algorithm to generate beautiful new colors.



124.8820, 32.5070, 0.0830



154.9350, 51.3510, -0.0170



144.2530, 23.4320, -17.1760



75.1530, 3.9430, 0.1270



76.2160, 69.5530, 0.5050



8.0070, 7.2900, 0.0420

Inverse Universe

The Inverse Universe completely reimagines the original color for something new.



120.1180, -32.5070, -0.0830



147.0650, -51.3510, 0.0170



100.7470, -23.4320, 17.1760



74.8470, -3.9430, -0.1270



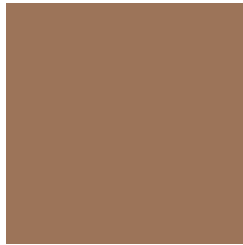
66.1970, -69.2780, 0.0180



6.9930, -7.2900, -0.0420

Previews

White Background



This preview shows how the YIQ color 124.8820, 32.5070, 0.0830 looks on a white background.

Color Contrast Check

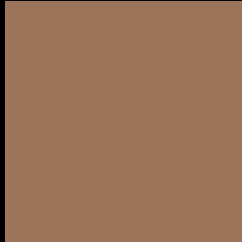
Large Text (above 18pt) WCAG AA ✓ Pass

Any Text WCAG AA × Fail

Large Text (above 18pt) WCAG AAA × Fail

Any Text WCAG AAA × Fail

Black Background



This preview shows how the YIQ color 124.8820, 32.5070, 0.0830 looks on a black background.

Color Contrast Check

Large Text (above 18pt) WCAG AA ✓ Pass

Any Text WCAG AA ✓ Pass

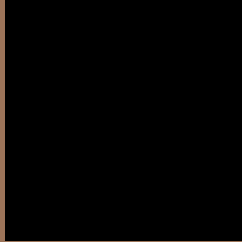
Large Text (above 18pt) WCAG AAA ✓ Pass

Any Text WCAG AAA × Fail

If you want to check with other color combinations, try the [Color Contrast Checker](#).

YIQ 124.8820, 32.5070, 0.0830

Background



This preview shows how black text looks on a background with the YIQ color 124.8820, 32.5070, 0.0830.



This preview shows how white text looks on a background with the YIQ color 124.8820, 32.5070,

0.0830.

Color Blindness Simulation

Color vision deficiency is a very complex topic, and I could not describe the different causes any better than Wikipedia does, so if you want to learn more, you should check out their [article about color blindness](#).

Dichromacy



Original Color

124.8820, 32.5070, 0.0830

Protanopia

124.0430, 15.6360, -8.0440

Deuteranopia

124.1370, 27.2350, -3.4930



Tritanopia

126.9650, 25.4440, 12.4520

Trichromacy



Original Color

124.8820, 32.5070, 0.0830

Protanomaly

124.5600, 21.5500, -5.0900

Deuteranomaly

124.4470, 29.2980, -2.3340

Tritanomaly

125.9990, 28.1040, 8.2960

Monochromacy



Original Color

124.8820, 32.5070, 0.0830

Achromatopsia

125.0000, 0.0000, 0.0000

Achromatomaly

125.0460, 11.5540, -0.1420

CSS Examples

Text

The CSS property to change the color of the text to YIQ 124.8820, 32.5070, 0.0830 is called "color". The color property can be set on classes, ids or directly on the HTML element.

This example shows how text in the color `rgb(156, 116, 89)` looks like.

```
.text, #text, p{  
    color:rgb(156, 116, 89)  
}
```

If you want to add a text shadow in that color use the text-shadow property, you can generate a text shadow directly with our [CSS Text Shadow Generator](#).

Here you see how black text with a 4 pixel rgb(156, 116, 89) colored shadow looks like.

```
.shadow{ text-shadow: 4px 4px 2px rgb(156, 116, 89) }
```

Border

The CSS property to change the border of an element to YIQ 124.8820, 32.5070, 0.0830 is called "border". The border property can be set on classes, ids or directly on the HTML element.

This example shows the color as border, it can be applied via the CSS property "border" or "border-color".

```
.border, #border, table{ border:4px solid rgb(156, 116, 89) }
```


If only the border color should be changed use the property `border-color`.

```
.border{ border-color:rgb(156, 116, 89) }
```

If you want to add a box shadow in that color use:

Here you see how a box with a 4 pixel `rgb(156, 116, 89)` colored shadow looks like.

```
.boxshadow{ -moz-box-shadow:4px 4px 4px  
4px rgb(156, 116, 89); -webkit-box-  
shadow:4px 4px 4px 4px rgb(156, 116, 89);  
box-shadow:4px 4px 4px 4px rgb(156, 116,  
89) }
```

Background

The CSS property to change the background color of an element to YIQ 124.8820, 32.5070, 0.0830 is called "background". The background property can be set on classes, ids or directly on the HTML element.

```
.background, #background, body{  
background: rgb(156, 116, 89) }
```

If only the background color should be changed can be used:

```
.background{ background-color: rgb(156,  
116, 89) }
```

This example shows the color as background, it is applied via the CSS property "background".

To optimize and compress your CSS code, you can use our [online CSS compressor and optimizer](#) based on csstidy. If you want to create a linear or radial gradient as background or border, check our [CSS Gradient Generator](#).

Hey! You found this booklet interesting? Support Converting Colors with the new Membership Option!

The pro membership hides all ads, plus gives you double the colors in the color bucket, and more awesome pro features!

[Learn more, Memberships starting at \\$2.50/m!](#)

**Follow me
on Twitter!**

@ConvertingColor