

Converting Colors

YIQ(124.9000, 96.2720, 61.4560)

Have a look what the booklet for
YIQ(124.9000, 96.2720, 61.4560)
contains.

YIQ(124.9000, 96.2720, 61.4560)	3
<i>Conversions</i>	4
<i>Details</i>	6
<i>Harmonies</i>	12
<i>Previews</i>	24
<i>Color Blindness Simulation</i>	28
<i>CSS Examples</i>	31

Color

**YIQ(124.9000, 96.2720,
61.4560)**

Conversions

Conversions Part 1

Format	Color
Hex	FF3B7B
RGB	255, 59, 123
RGB Percent	100%, 23%, 48%
CMY	0.0000, 0.7689, 0.5173
CMYK	0.00, 0.77, 0.52, 0.00
HSL	340°, 100%, 62%
HSV	340°, 77%, 100%
XYZ	46.3802, 25.8117, 21.3044
YIQ	124.9000, 96.2720, 61.4560

Conversions

Conversions Part 2

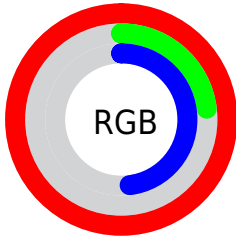
Format	Color
R_{YB}	255, 59, 123
Decimal	16726907
CIE _{Lab}	57.86, 75.29, 11.23
CIE _{LCh}	58, 76.122, 8.485
Yxy	25.8117, 0.4961, 0.2761
Android (android.graphics.Color)	4294916987 (0xFFFF3B7B)
YUV	124.9000, -0.9367, 114.0977
Hunter-Lab	50.8052, 74.0441, 10.7013

Details

The YIQ color **124.9000, 96.2720, 61.4560** is a dark color, and the websafe version is hex **FF3366**. The color can be described as middle washed rose. A complement of this color would be **189.1000, -96.2720, -61.4560**, and the grayscale version is **125.0000, 0.0000, 0.0000**.

A 20% lighter version of the original color is **168.3960, 61.9800, 44.1560**, and **65.9580, 90.3570, 64.0290** is the 20% darker color. If you saturate the color by 10%, you get **107.7000, 108.8790, 69.7670**, and if you desaturate by 10%, it is **141.5130, 83.9400, 53.6680**.

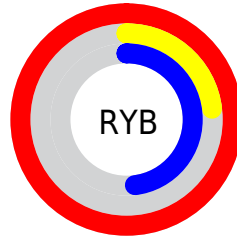
Distribution



Red (100%)

Green (23%)

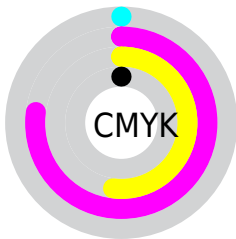
Blue (48%)



Red (100%)

Yellow (23%)

Blue (48%)

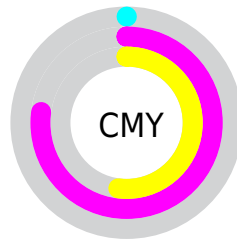


Cyan (0%)

Magenta (77%)

Yellow (52%)

Black (0%)



Cyan (0%)

Magenta (77%)

Yellow (52%)

Brightness & Saturation Gradients

These gradients show how the YIQ color 124.9000, 96.2720, 61.4560 changes by changing the brightness by 10 percent. The first figure shows a shift by +10% for each color and the second figure -10%.

Similar to the brightness gradients but the following saturation gradients show a change of the YIQ color 124.9000, 96.2720, 61.4560 by changing the saturation by 10% instead.

124.9000, 96.2720,
61.4560

124.9000, 96.2720,
61.4560

255.0000, -0.0000,
-0.0000

79.6100, 100.6250,
76.1850

168.3960, 61.9800,
44.1560

65.9580, 90.3570,
64.0290

189.1980, 44.7420,
37.1740

53.8820, 78.3470,
50.4030

210.0000, 27.5040,
30.1920

42.5180, 67.2080,
37.5120

230.3460, 11.5500,
21.9660

30.5130, 56.4360,
23.4760

247.9560, 3.3000,
6.2760

21.2720, 40.7570,
15.7730

11.1770, 21.7310,

8.1550

■ 0.0000, 0.0000,
0.0000

■ 124.9000, 96.2720,
61.4560

■ 124.9000, 96.2720,
61.4560

■ 107.7000,
108.8790, 69.7670

■ 141.5130, 83.9400,
53.6680

■ 91.0870, 121.2110,
77.5550

■ 158.7130, 71.3330,
45.3570

■ 85.7070, 125.3370,
79.8730

■ 175.4400, 58.6800,
37.8800

■ 192.6400, 46.0730,
29.5690

■ 209.2530, 33.7410,
21.7810

■ 226.4530, 21.1340,
13.4700

■ 243.0660, 8.8020,
5.6820

255.0000, -0.0000,
-0.0000

Harmonies

Analogous

The Analogous color harmony consists of three colors that are next to each other on the color wheel.



134.6400, 56.3820, 68.5260



124.9000, 96.2720, 61.4560



128.6910, 102.7890, 25.9330

Triad

The Triadic color harmony groups three colors that are evenly spaced from another and form a triangle on the color wheel.



124.9000, 96.2720, 61.4560



115.1110, 1.4790, -65.3770



122.4030, -125.5800, -3.8520

Complementary

The Complementary color scheme is a pair of colors which are on the opposite of each other on the color wheel.



124.9000, 96.2720, 61.4560



189.1000, -96.2720, -61.4560

Split Complementary

Split-complementary colors differ from the complementary color scheme. The scheme consists of three colors, the original color and two neighbors of the complement color.



123.2230, -116.8660, -18.6100



124.9000, 96.2720, 61.4560



106.7730, -73.3020, -59.2380

Square

The Square scheme is like the rectangle color scheme, but the four colors are evenly spaced on the color wheel.



124.9000, 96.2720, 61.4560



128.5030, 50.9460, -42.2540



116.5140, -96.5970, -39.0370



111.8370, -120.6300, 5.5620

Rectangle

The Rectangle color scheme consists of four colors that form a rectangle on the color wheel.



124.9000, 96.2720, 61.4560



129.2730, 99.7690, -7.4550



116.5140, -96.5970, -39.0370



124.5230, -126.0380, -6.5660

Sweetspot

The Sweet Spot groups the original color and five complimentary colors.



124.9000, 96.2720, 61.4560



215.9210, 28.7440, 18.7280



120.5130, 15.1600, 88.7280



104.0180, 17.9250, 11.0530



0.0000, 0.0000, 0.0000



128.0000, -0.0000, -0.0000

Same Dimension

The Same Dimension uses a secret algorithm to generate beautiful new colors.



124.9000, 96.2720, 61.4560



99.0430, 115.3430, 73.7670



136.9750, 107.7410, 24.2930



119.3430, 6.4640, 4.0000



64.2910, 93.6130, 60.0850



21.5300, 31.4030, 20.0990

Inverse Universe

The Inverse Universe completely reimagines the original color for something new.



124.9000, 96.2720, 61.4560



99.0430, 115.3430, 73.7670



177.0250, -107.7410, -24.2930



119.3430, 6.4640, 4.0000



64.2910, 93.6130, 60.0850



21.5300, 31.4030, 20.0990

Previews

White Background



This preview shows how the YIQ color 124.9000, 96.2720, 61.4560 looks on a white background.

Color Contrast Check

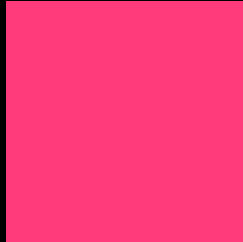
Large Text (above 18pt) WCAG AA ✓ Pass

Any Text WCAG AA × Fail

Large Text (above 18pt) WCAG AAA × Fail

Any Text WCAG AAA × Fail

Black Background



This preview shows how the YIQ color 124.9000, 96.2720, 61.4560 looks on a black background.

Color Contrast Check

Large Text (above 18pt) WCAG AA ✓ Pass

Any Text WCAG AA ✓ Pass

Large Text (above 18pt) WCAG AAA ✓ Pass

Any Text WCAG AAA × Fail

If you want to check with other color combinations, try the [Color Contrast Checker](#).

YIQ 124.9000, 96.2720, 61.4560

Background



This preview shows how black text looks on a background with the YIQ color 124.9000, 96.2720, 61.4560.



This preview shows how white text looks on a background with the YIQ color 124.9000, 96.2720,

61.4560.

Color Blindness Simulation

Color vision deficiency is a very complex topic, and I could not describe the different causes any better than Wikipedia does, so if you want to learn more, you should check out their [article about color blindness](#).

Dichromacy



Original Color

124.9000, 96.2720, 61.4560

Protanopia

139.8820, -11.0510, 7.5490

Deuteranopia

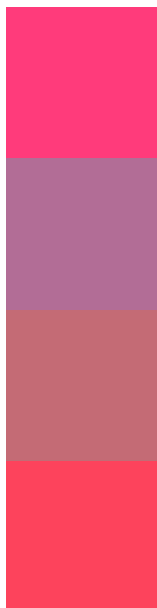
140.0920, 23.1080, -0.2840



Tritanopia

125.4610, 106.9130, 39.3050

Trichromacy



Original Color

124.9000, 96.2720, 61.4560

Protanomaly

134.3050, 27.9630, 27.3790

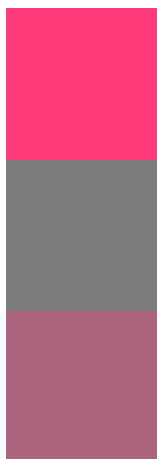
Deuteranomaly

134.7510, 49.8340, 21.9780

Tritanomaly

125.4640, 102.8310, 47.2070

Monochromacy



Original Color

124.9000, 96.2720, 61.4560

Achromatopsia

125.0000, 0.0000, 0.0000

Achromatomaly

124.8510, 34.9330, 22.2050

CSS Examples

Text

The CSS property to change the color of the text to YIQ 124.9000, 96.2720, 61.4560 is called "color". The color property can be set on classes, ids or directly on the HTML element.

This example shows how text in the color `rgb(255, 59, 123)` looks like.

```
.text, #text, p{  
    color:rgb(255, 59, 123)  
}
```

If you want to add a text shadow in that color use the text-shadow property, you can generate a text shadow directly with our [CSS Text Shadow Generator](#).

Here you see how black text with a 4 pixel rgb(255, 59, 123) colored shadow looks like.

```
.shadow{ text-shadow: 4px 4px 2px rgb(255, 59, 123) }
```

Border

The CSS property to change the border of an element to YIQ 124.9000, 96.2720, 61.4560 is called "border". The border property can be set on classes, ids or directly on the HTML element.

This example shows the color as border, it can be applied via the CSS property "border" or "border-color".

```
.border, #border, table{ border:4px solid rgb(255, 59, 123) }
```


If only the border color should be changed use the property `border-color`.

```
.border{ border-color:rgb(255, 59, 123) }
```

If you want to add a box shadow in that color use:

Here you see how a box with a 4 pixel `rgb(255, 59, 123)` colored shadow looks like.

```
.boxshadow{ -moz-box-shadow:4px 4px 4px  
4px rgb(255, 59, 123); -webkit-box-  
shadow:4px 4px 4px 4px rgb(255, 59, 123);  
box-shadow:4px 4px 4px 4px rgb(255, 59,  
123) }
```

Background

The CSS property to change the background color of an element to YIQ 124.9000, 96.2720, 61.4560 is called "background". The background property can be set on classes, ids or directly on the HTML element.

```
.background, #background, body{  
background: rgb(255, 59, 123) }
```

If only the background color should be changed can be used:

```
.background{ background-color: rgb(255, 59,  
123) }
```

This example shows the color as background, it is applied via the CSS property "background".

To optimize and compress your CSS code, you can use our [online CSS compressor and optimizer](#) based on csstidy. If you want to create a linear or radial gradient as background or border, check our [CSS Gradient Generator](#).

Hey! You found this booklet interesting? Support Converting Colors with the new Membership Option!

The pro membership hides all ads, plus gives you double the colors in the color bucket, and more awesome pro features!

[Learn more, Memberships starting at \\$2.50/m!](#)

**Follow me
on Twitter!**

@ConvertingColor