

Converting Colors

YIQ(125.8870, 43.2790, 14.1190)

Have a look what the booklet for
YIQ(125.8870, 43.2790, 14.1190)
contains.

YIQ(125.8870, 43.2790, 14.1190)	3
<i>Conversions</i>	4
<i>Details</i>	6
<i>Harmonies</i>	12
<i>Previews</i>	24
<i>Color Blindness Simulation</i>	28
<i>CSS Examples</i>	31

Color

**YIQ(125.8870, 43.2790,
14.1190)**

Conversions

Conversions Part 1

Format	Color
Hex	B06966
RGB	176, 105, 102
RGB Percent	69%, 41%, 40%
CMY	0.3096, 0.5883, 0.5998
CMYK	0.00, 0.40, 0.42, 0.31
HSL	2°, 32%, 55%
HSV	2°, 42%, 69%
XYZ	25.3631, 20.2923, 15.1619
YIQ	125.8870, 43.2790, 14.1190

Conversions

Conversions Part 2

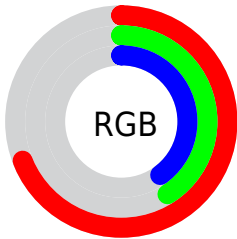
Format	Color
RYB	176, 105, 102
Decimal	11561318
CIELab	52.17, 28.08, 13.86
CIElCh	52, 31.319, 26.274
Yxy	20.2923, 0.4170, 0.3337
Android (android.graphics.Color)	4289751398 (0xFFB06966)
YUV	125.8870, -11.7763, 43.9491
Hunter-Lab	45.0470, 21.6699, 11.5771

Details

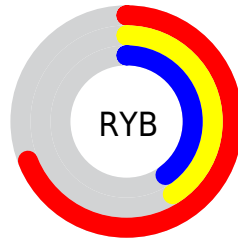
The YIQ color **125.8870, 43.2790, 14.1190** is a dark color, and the websafe version is hex **996666**. A complement of this color would be **152.1130, -43.2790, -14.1190**, and the grayscale version is **126.0000, 0.0000, 0.0000**.

A 20% lighter version of the original color is **179.5670, 47.1760, 15.0800**, and **75.3210, 39.0610, 13.4690** is the 20% darker color. If you saturate the color by 10%, you get **113.8560, 53.7320, 17.4120**, and if you desaturate by 10%, it is **137.9180, 32.8260, 10.8260**.

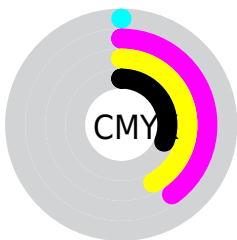
Distribution



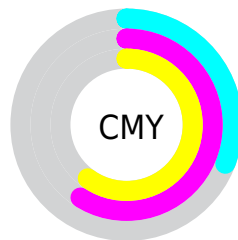
- Red (69%)
- Green (41%)
- Blue (40%)



- Red (69%)
- Yellow (41%)
- Blue (40%)



- Cyan (0%)
- Magenta (40%)
- Yellow (42%)
- Black (31%)



- Cyan (31%)
- Magenta (59%)
- Yellow (60%)

Brightness & Saturation Gradients

These gradients show how the YIQ color 125.8870, 43.2790, 14.1190 changes by changing the brightness by 10 percent. The first figure shows a shift by +10% for each color and the second figure -10%.

Similar to the brightness gradients but the following saturation gradients show a change of the YIQ color 125.8870, 43.2790, 14.1190 by changing the saturation by 10% instead.

■ 125.8870, 43.2790,
14.1190

■ 125.8870, 43.2790,
14.1190

■ 255.0000, -0.0000,
-0.0000

■ 100.1040, 41.1700,
13.7940

■ 179.5670, 47.1760,
15.0800

■ 75.3210, 39.0610,
13.4690

■ 204.7730, 43.6000,
13.8080

■ 51.3530, 36.0350,
13.2430

■ 224.2870, 27.2330,
7.5610

■ 26.3960, 34.4760,
13.9640

■ 244.6160, 9.9490,
1.4130

■ 13.4550, 26.8200,
9.5400

■ 0.0000, 0.0000,
0.0000

■ 125.8870, 43.2790,
14.1190

■ 125.8870, 43.2790,
14.1190

■ 113.8560, 53.7320,
17.4120

■ 137.9180, 32.8260,
10.8260

■ 101.9390, 63.8640,
21.0160

■ 149.8350, 22.6940,
7.2220

■ 89.9080, 74.3170,
24.3090

■ 161.8660, 12.2410,
3.9290

■ 77.9910, 84.4490,
27.9130

■ 173.7830, 2.1090,
0.3250

■ 65.9600, 94.9020,
31.2060

■ 185.8140, -8.3440,
-2.9680


■ 56.7330, 102.9710,
33.6510

■ 197.2580,
-18.5220, -5.7380

■ 209.1750,
-28.6540, -9.3420

■ 221.2060,

-39.1070, -12.6350

 231.3790,
-47.0840, -16.7480

Harmonies

Analogous

The Analogous color harmony consists of three colors that are next to each other on the color wheel.



127.4810, 33.0990, 22.4030



125.8870, 43.2790, 14.1190



124.6120, 42.1350, 1.8070

Triad

The Triadic color harmony groups three colors that are evenly spaced from another and form a triangle on the color wheel.



125.8870, 43.2790, 14.1190



116.2620, -16.3180, -23.6620



118.7500, -45.8500, 4.9500

Complementary

The Complementary color scheme is a pair of colors which are on the opposite of each other on the color wheel.



125.8870, 43.2790, 14.1190



152.1130, -43.2790, -14.1190

Split Complementary

Split-complementary colors differ from the complementary color scheme. The scheme consists of three colors, the original color and two neighbors of the complement color.



104.6760, -78.5370, -13.9050



125.8870, 43.2790, 14.1190



109.0380, -47.8620, -24.6780

Square

The Square scheme is like the rectangle color scheme, but the four colors are evenly spaced on the color wheel.



125.8870, 43.2790, 14.1190



120.1420, 10.5030, -19.6490



97.7640, -85.1370, -26.4570



125.9390, -15.2250, 17.1190

Rectangle

The Rectangle color scheme consists of four colors that form a rectangle on the color wheel.



125.8870, 43.2790, 14.1190



123.8080, 35.3510, -7.4090



97.7640, -85.1370, -26.4570



115.2000, -56.1650, -0.8450

Sweetspot

The Sweet Spot groups the original color and five complimentary colors.



125.8870, 43.2790, 14.1190



209.5570, 17.6050, 5.8370



132.3340, 20.9920, 38.0800



102.2680, 11.0490, 3.5050



242.0000, -0.0000, 0.0000



115.0000, -0.0000, 0.0000

Same Dimension

The Same Dimension uses a secret algorithm to generate beautiful new colors.



125.8870, 43.2790, 14.1190



151.7330, 67.4400, 22.2880



147.6060, 33.1040, -5.2320



83.2780, 5.0890, 1.3850



49.2690, 89.5380, 29.2980



8.3610, 15.2210, 4.9890

Inverse Universe

The Inverse Universe completely reimagines the original color for something new.



152.1130, -43.2790, -14.1190



192.6800, -67.1650, -21.7650



130.9810, -33.3790, 4.7090



86.3090, -5.3640, -1.9080



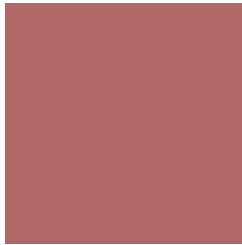
103.7310, -89.5380, -29.2980



17.0520, -14.9460, -4.4660

Previews

White Background



This preview shows how the YIQ color 125.8870, 43.2790, 14.1190 looks on a white background.

Color Contrast Check

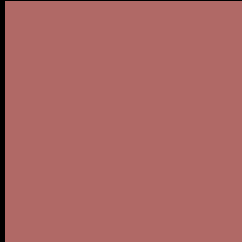
Large Text (above 18pt) WCAG AA ✓ Pass

Any Text WCAG AA × Fail

Large Text (above 18pt) WCAG AAA × Fail

Any Text WCAG AAA × Fail

Black Background



This preview shows how the YIQ color 125.8870, 43.2790, 14.1190 looks on a black background.

Color Contrast Check

Large Text (above 18pt) WCAG AA ✓ Pass

Any Text WCAG AA ✓ Pass

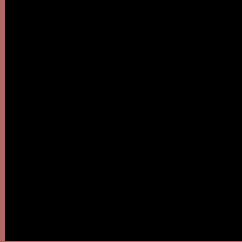
Large Text (above 18pt) WCAG AAA ✓ Pass

Any Text WCAG AAA × Fail

If you want to check with other color combinations, try the [Color Contrast Checker](#).

YIQ 125.8870, 43.2790, 14.1190

Background



This preview shows how black text looks on a background with the YIQ color 125.8870, 43.2790, 14.1190.



This preview shows how white text looks on a background with the YIQ color 125.8870, 43.2790,

Color Blindness Simulation

Color vision deficiency is a very complex topic, and I could not describe the different causes any better than Wikipedia does, so if you want to learn more, you should check out their [article about color blindness](#).

Dichromacy



Original Color

125.8870, 43.2790, 14.1190

Protanopia

124.4260, 7.4280, -2.4600

Deuteranopia

125.3800, 22.2370, -1.0190



Tritanopia

126.6250, 41.2610, 17.6530

Trichromacy



Original Color

125.8870, 43.2790, 14.1190

Protanomaly

124.9440, 20.7690, 3.5610

Deuteranomaly

125.8480, 29.8470, 4.2390

Tritanomaly

126.2830, 42.2240, 16.7200

Monochromacy



Original Color

125.8870, 43.2790, 14.1190

Achromatopsia

126.0000, 0.0000, 0.0000

Achromatomaly

125.6600, 15.8170, 5.2010

CSS Examples

Text

The CSS property to change the color of the text to YIQ 125.8870, 43.2790, 14.1190 is called "color". The color property can be set on classes, ids or directly on the HTML element.

This example shows how text in the color `rgb(176, 105, 102)` looks like.

```
.text, #text, p{  
    color:rgb(176, 105, 102)  
}
```

If you want to add a text shadow in that color use the text-shadow property, you can generate a text shadow directly with our [CSS Text Shadow Generator](#).

Here you see how black text with a 4 pixel rgb(176, 105, 102) colored shadow looks like.

```
.shadow{ text-shadow: 4px 4px 2px rgb(176, 105, 102) }
```

Border

The CSS property to change the border of an element to YIQ 125.8870, 43.2790, 14.1190 is called "border". The border property can be set on classes, ids or directly on the HTML element.

This example shows the color as border, it can be applied via the CSS property "border" or "border-color".

```
.border, #border, table{ border:4px solid rgb(176, 105, 102) }
```


If only the border color should be changed use the property `border-color`.

```
.border{ border-color:rgb(176, 105, 102) }
```

If you want to add a box shadow in that color use:

Here you see how a box with a 4 pixel `rgb(176, 105, 102)` colored shadow looks like.

```
.boxshadow{ -moz-box-shadow:4px 4px 4px  
4px rgb(176, 105, 102); -webkit-box-  
shadow:4px 4px 4px 4px rgb(176, 105, 102);  
box-shadow:4px 4px 4px 4px rgb(176, 105,  
102) }
```

Background

The CSS property to change the background color of an element to YIQ 125.8870, 43.2790, 14.1190 is called "background". The background property can be set on classes, ids or directly on the HTML element.

```
.background, #background, body{  
background: rgb(176, 105, 102) }
```

If only the background color should be changed can be used:

```
.background{ background-color: rgb(176,  
105, 102) }
```

This example shows the color as background, it is applied via the CSS property "background".

To optimize and compress your CSS code, you can use our [online CSS compressor and optimizer](#) based on csstidy. If you want to create a linear or radial gradient as background or border, check our [CSS Gradient Generator](#).

Hey! You found this booklet interesting? Support Converting Colors with the new Membership Option!

The pro membership hides all ads, plus gives you double the colors in the color bucket, and more awesome pro features!

[Learn more, Memberships starting at \\$2.50/m!](#)

**Follow me
on Twitter!**

@ConvertingColor