

# Converting Colors

YIQ(126.3880, 73.6260, 42.3460)

Have a look what the booklet for  
YIQ(126.3880, 73.6260, 42.3460)  
contains.

<b>YIQ(126.3880, 73.6260, 42.3460)</b> .....	3
<b><i>Conversions</i></b> .....	4
<b><i>Details</i></b> .....	6
<b><i>Harmonies</i></b> .....	12
<b><i>Previews</i></b> .....	24
<b><i>Color Blindness Simulation</i></b> .....	28
<b><i>CSS Examples</i></b> .....	31

# Color

**YIQ(126.3880, 73.6260,  
42.3460)**

# Conversions

## Conversions Part 1

<b>Format</b>	<b>Color</b>
Hex	DF4F75
RGB	223, 79, 117
RGB Percent	87%, 31%, 46%
CMY	0.1251, 0.6904, 0.5409
CMYK	0.00, 0.65, 0.48, 0.13
HSL	344°, 69%, 59%
HSV	344°, 65%, 87%
XYZ	36.4667, 22.5720, 19.2851
YIQ	126.3880, 73.6260, 42.3460

# Conversions

## Conversions Part 2

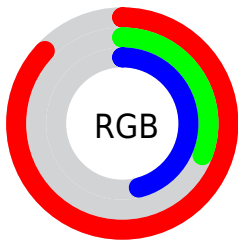
<b>Format</b>	<b>Color</b>
<b>R<sub>YB</sub></b>	223, 79, 117
Decimal	14634869
CIE <sub>Lab</sub>	54.63, 58.89, 9.46
CIE <sub>LCh</sub>	55, 59.640, 9.122
Yxy	22.5720, 0.4656, 0.2882
Android (android.graphics.Color)	4292824949 (0xFFDF4F75)
YUV	126.3880, -4.6283, 84.7287
Hunter-Lab	47.5100, 53.8666, 9.1902

# Details

The YIQ color **126.3880, 73.6260, 42.3460** is a dark color, and the websafe version is hex **CC3366**. The color can be described as middle muted rose. A complement of this color would be **175.6120, -73.6260, -42.3460**, and the grayscale version is **126.0000, 0.0000, 0.0000**.

A 20% lighter version of the original color is **174.7560, 60.6060, 36.0140**, and **60.1250, 73.3490, 52.8770** is the 20% darker color. If you saturate the color by 10%, you get **111.6500, 84.8120, 48.8760**, and if you desaturate by 10%, it is **141.1260, 62.4400, 35.8160**.

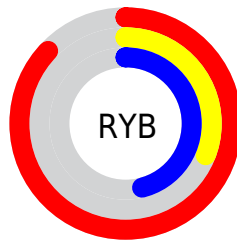
# Distribution



Red (87%)

Green (31%)

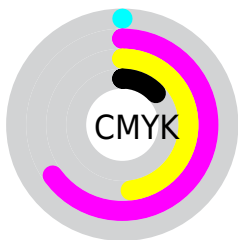
Blue (46%)



Red (87%)

Yellow (31%)

Blue (46%)

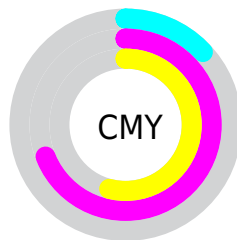


Cyan (0%)

Magenta (65%)

Yellow (48%)

Black (13%)



Cyan (13%)

Magenta (69%)

Yellow (54%)

# Brightness & Saturation Gradients

These gradients show how the YIQ color 126.3880, 73.6260, 42.3460 changes by changing the brightness by 10 percent. The first figure shows a shift by +10% for each color and the second figure -10%.

Similar to the brightness gradients but the following saturation gradients show a change of the YIQ color 126.3880, 73.6260, 42.3460 by changing the saturation by 10% instead.



126.3880, 73.6260,  
42.3460

126.3880, 73.6260,  
42.3460

255.0000, -0.0000,  
-0.0000

97.0720, 71.7000,  
44.2120

174.7560, 60.6060,  
36.0140

60.1250, 73.3490,  
52.8770

194.2700, 44.2390,  
29.7670

45.1250, 64.1810,  
42.8130

214.4850, 27.2760,  
23.3080

34.1740, 53.3170,  
30.4450

234.8140, 9.9920,  
17.1600

22.8380, 44.9750,  
16.4230

252.6520, 1.1000,  
2.0920

14.2810, 27.3700,  
10.5860

0.0000, 0.0000,

0.0000

■ 126.3880, 73.6260,  
42.3460

■ 126.3880, 73.6260,  
42.3460

■ 111.6500, 84.8120,  
48.8760

■ 141.1260, 62.4400,  
35.8160

■ 96.2110, 96.5940,  
55.6180

■ 156.5650, 50.6580,  
29.0740

■ 81.4730, 107.7800,  
62.1480

■ 171.3030, 39.4720,  
22.5440

■ 73.4030, 113.9690,  
65.6250

■ 186.1550, 27.9650,  
16.3250

■ 200.8930, 16.7790,  
9.7950

■ 216.3320, 4.9970,  
3.0530

■ 231.0700, -6.1890,  
-3.4770

■ 244.6340,  
-16.8250, -8.9610

■ 245.4320,  
-19.0720, -6.7840

# Harmonies

## Analogous

The Analogous color harmony consists of three colors that are next to each other on the color wheel.



131.3310, 43.4100, 50.3060



126.3880, 73.6260, 42.3460



126.3290, 80.1410, 17.8770

# Triad

The Triadic color harmony groups three colors that are evenly spaced from another and form a triangle on the color wheel.



126.3880, 73.6260, 42.3460



116.0190, -3.2930, -44.9650



111.5800, -113.0170, -5.7610

# Complementary

The Complementary color scheme is a pair of colors which are on the opposite of each other on the color wheel.



126.3880, 73.6260, 42.3460



175.6120, -73.6260, -42.3460

# Split Complementary

Split-complementary colors differ from the complementary color scheme. The scheme consists of three colors, the original color and two neighbors of the complement color.



112.0410, -104.6700, -19.3740



126.3880, 73.6260, 42.3460



99.7120, -71.3320, -50.8840

# Square

The Square scheme is like the rectangle color scheme, but the four colors are evenly spaced on the color wheel.



126.3880, 73.6260, 42.3460



120.7570, 47.4150, -38.8330



107.6290, -89.4910, -35.6590



113.9130, -91.4250, 10.4230



# Rectangle

The Rectangle color scheme consists of four colors that form a rectangle on the color wheel.



126.3880, 73.6260, 42.3460



126.1580, 75.4680, -2.0680



107.6290, -89.4910, -35.6590



112.4290, -111.2740, -9.8180

# Sweetspot

The Sweet Spot groups the original color and five complimentary colors.



126.3880, 73.6260, 42.3460



222.7200, 24.7560, 13.9080



127.1100, 16.9520, 67.2560



107.8820, 15.3120, 8.8480



0.0000, 0.0000, 0.0000



128.0000, -0.0000, -0.0000



# Same Dimension

The Same Dimension uses a secret algorithm to generate beautiful new colors.



126.3880, 73.6260, 42.3460



121.5430, 101.5910, 58.6710



142.0140, 76.4740, 12.7460



104.6310, 5.5930, 3.2650



57.9820, 89.8090, 51.9290



15.8340, 24.4350, 14.2190



# Inverse Universe

The Inverse Universe completely reimagines the original color for something new.



126.3880, 73.6260, 42.3460



121.5430, 101.5910, 58.6710



159.9860, -76.4740, -12.7460



104.6310, 5.5930, 3.2650



57.9820, 89.8090, 51.9290



15.8340, 24.4350, 14.2190



# Previews

## White Background



This preview shows how the YIQ color 126.3880, 73.6260, 42.3460 looks on a white background.

## Color Contrast Check

Large Text (above 18pt) WCAG AA ✓ Pass

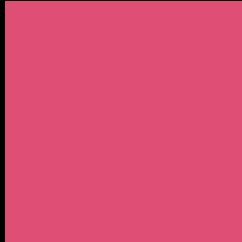
Any Text WCAG AA × Fail

Large Text (above 18pt) WCAG AAA × Fail

Any Text WCAG AAA × Fail



# Black Background



This preview shows how the YIQ color 126.3880, 73.6260, 42.3460 looks on a black background.

## Color Contrast Check

Large Text (above 18pt) WCAG AA ✓ Pass

Any Text WCAG AA ✓ Pass

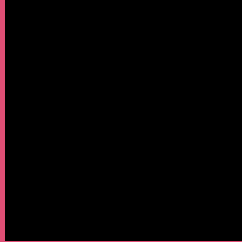
Large Text (above 18pt) WCAG AAA ✓ Pass

Any Text WCAG AAA × Fail

If you want to check with other color combinations, try the [Color Contrast Checker](#).

# YIQ 126.3880, 73.6260, 42.3460

## Background



This preview shows how black text looks on a background with the YIQ color 126.3880, 73.6260, 42.3460.



This preview shows how white text looks on a background with the YIQ color 126.3880, 73.6260,



# Color Blindness Simulation

Color vision deficiency is a very complex topic, and I could not describe the different causes any better than Wikipedia does, so if you want to learn more, you should check out their [article about color blindness](#).

## Dichromacy



### Original Color

126.3880, 73.6260, 42.3460

### Protanopia

131.4110, -5.4110, 4.4530

### Deuteranopia

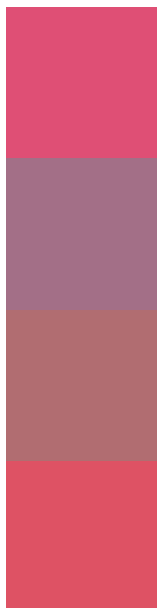
131.6510, 20.0360, 0.3240



## Tritanopia

125.6470, 79.7260, 30.9100

# Trichromacy



## Original Color

126.3880, 73.6260, 42.3460

## Protanomaly

129.2840, 23.2880, 18.4880

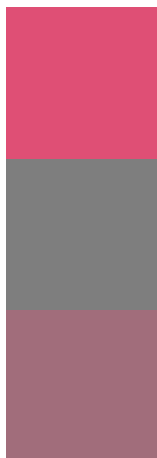
## Deuteranomaly

129.7880, 39.2440, 15.6600

## Tritanomaly

125.9120, 77.6620, 35.2780

# Monochromacy



## Original Color

126.3880, 73.6260, 42.3460

## Achromatopsia

126.0000, 0.0000, 0.0000

## Achromatomaly

126.1440, 26.4980, 15.3780

# CSS Examples

## Text

The CSS property to change the color of the text to YIQ 126.3880, 73.6260, 42.3460 is called "color". The color property can be set on classes, ids or directly on the HTML element.

This example shows how text in the color `rgb(223, 79, 117)` looks like.

```
.text, #text, p{  
    color:rgb(223, 79, 117)  
}
```

If you want to add a text shadow in that color use the text-shadow property, you can generate a text shadow directly with our [CSS Text Shadow Generator](#).

Here you see how black text with a 4 pixel rgb(223, 79, 117) colored shadow looks like.

```
.shadow{ text-shadow: 4px 4px 2px rgb(223, 79, 117) }
```

## Border

The CSS property to change the border of an element to YIQ 126.3880, 73.6260, 42.3460 is called "border". The border property can be set on classes, ids or directly on the HTML element.

This example shows the color as border, it can be applied via the CSS property "border" or "border-color".

```
.border, #border, table{ border:4px solid rgb(223, 79, 117) }
```



If only the border color should be changed use the property `border-color`.

```
.border{ border-color:rgb(223, 79, 117) }
```

If you want to add a box shadow in that color use:

Here you see how a box with a 4 pixel `rgb(223, 79, 117)` colored shadow looks like.

```
.boxshadow{ -moz-box-shadow:4px 4px 4px 4px rgb(223, 79, 117); -webkit-box-shadow:4px 4px 4px 4px rgb(223, 79, 117); box-shadow:4px 4px 4px 4px rgb(223, 79, 117) }
```

# Background

The CSS property to change the background color of an element to YIQ 126.3880, 73.6260, 42.3460 is called "background". The background property can be set on classes, ids or directly on the HTML element.

```
.background, #background, body{  
background: rgb(223, 79, 117) }
```

If only the background color should be changed can be used:

```
.background{ background-color: rgb(223, 79,  
117) }
```

This example shows the color as background, it is applied via the CSS property "background".

To optimize and compress your CSS code, you can use our [online CSS compressor and optimizer](#) based on csstidy. If you want to create a linear or radial gradient as background or border, check our [CSS Gradient Generator](#).

Hey! You found this booklet interesting? Support Converting Colors with the new Membership Option!

The pro membership hides all ads, plus gives you double the colors in the color bucket, and more awesome pro features!

**[Learn more, Memberships starting at \\$2.50/m!](#)**

**Follow me  
on Twitter!**

@ConvertingColor