

Converting Colors

YIQ(126.9590, 51.9440, 16.7760)

Have a look what the booklet for
YIQ(126.9590, 51.9440, 16.7760)
contains.

YIQ(126.9590, 51.9440, 16.7760)	3
<i>Conversions</i>	4
<i>Details</i>	6
<i>Harmonies</i>	12
<i>Previews</i>	24
<i>Color Blindness Simulation</i>	28
<i>CSS Examples</i>	31

Color

**YIQ(126.9590, 51.9440,
16.7760)**

Conversions

Conversions Part 1

Format	Color
Hex	BB6662
RGB	187, 102, 98
RGB Percent	73%, 40%, 38%
CMY	0.2665, 0.6001, 0.6155
CMYK	0.00, 0.45, 0.48, 0.27
HSL	3°, 40%, 56%
HSV	3°, 48%, 73%
XYZ	27.4610, 20.9498, 14.1649
YIQ	126.9590, 51.9440, 16.7760

Conversions

Conversions Part 2

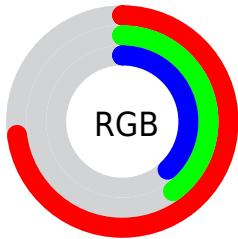
Format	Color
RYB	187, 102, 98
Decimal	12281442
CIELab	52.89, 33.58, 17.44
CIElCh	53, 37.845, 27.447
Yxy	20.9498, 0.4388, 0.3348
Android (android.graphics.Color)	4290471522 (0xFFBB6662)
YUV	126.9590, -14.2768, 52.6560
Hunter-Lab	45.7709, 26.9946, 13.6910

Details

The YIQ color **126.9590, 51.9440, 16.7760** is a dark color, and the websafe version is hex **CC6666**. A complement of this color would be **158.0410, -51.9440, -16.7760**, and the grayscale version is **127.0000, -0.0000, -0.0000**.

A 20% lighter version of the original color is **180.9380, 56.4370, 17.9490**, and **75.3220, 46.4880, 16.5360** is the 20% darker color. If you saturate the color by 10%, you get **114.2270, 62.9930, 20.2810**, and if you desaturate by 10%, it is **139.6910, 40.8950, 13.2710**.

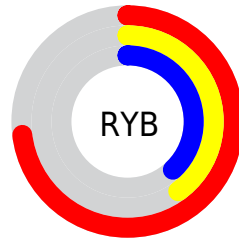
Distribution



Red (73%)

Green (40%)

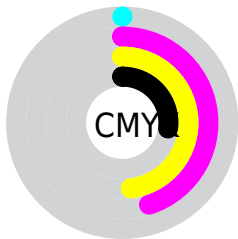
Blue (38%)



Red (73%)

Yellow (40%)

Blue (38%)

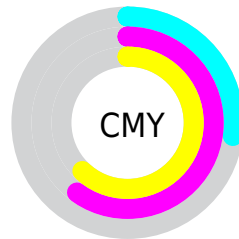


Cyan (0%)

Magenta (45%)

Yellow (48%)

Black (27%)



Cyan (27%)

Magenta (60%)

Yellow (62%)

Brightness & Saturation Gradients

These gradients show how the YIQ color 126.9590, 51.9440, 16.7760 changes by changing the brightness by 10 percent. The first figure shows a shift by +10% for each color and the second figure -10%.

Similar to the brightness gradients but the following saturation gradients show a change of the YIQ color 126.9590, 51.9440, 16.7760 by changing the saturation by 10% instead.

■ 126.9590, 51.9440,
16.7760

■ 126.9590, 51.9440,
16.7760

255.0000, -0.0000,
-0.0000

■ 100.8770, 49.2390,
16.2390

■ 180.9380, 56.4370,
17.9490

■ 75.3220, 46.4880,
16.5360

■ 203.0290, 45.7550,
13.2990

■ 50.6530, 44.0580,
16.5220

■ 222.6570, 29.0670,
7.3630

■ 23.5220, 43.0490,
18.2890

■ 242.2850, 12.3790,
1.4270

■ 15.2490, 30.3960,
10.8120

■ 2.3920, 4.7680,
1.6960

■ 0.0000, 0.0000,

0.0000

■ 126.9590, 51.9440,
16.7760

■ 126.9590, 51.9440,
16.7760

■ 114.2270, 62.9930,
20.2810

■ 139.6910, 40.8950,
13.2710

■ 101.6090, 73.7210,
24.0970

■ 152.3090, 30.1670,
9.4550

■ 88.8770, 84.7700,
27.6020

■ 165.0410, 19.1180,
5.9500

■ 76.1450, 95.8190,
31.1070

■ 177.1860, 8.3440,
2.9680

■ 64.1140, 106.2720,
34.4000

■ 189.9180, -2.7050,
-0.5370

■ 60.6090, 109.2520,
35.4600

■ 202.5360,
-13.4330, -4.3530

■ 215.2680,
-24.4820, -7.8580

■ 228.0000,
-35.5310, -11.3630

■ 234.6680,
-40.5280, -14.4160

Harmonies

Analogous

The Analogous color harmony consists of three colors that are next to each other on the color wheel.



128.8350, 41.0300, 27.3500



126.9590, 51.9440, 16.7760



125.9780, 49.7920, 0.7040

Triad

The Triadic color harmony groups three colors that are evenly spaced from another and form a triangle on the color wheel.



126.9590, 51.9440, 16.7760



115.1640, -22.0940, -29.1180



117.2200, -58.9170, 4.9790

Complementary

The Complementary color scheme is a pair of colors which are on the opposite of each other on the color wheel.



126.9590, 51.9440, 16.7760



158.0410, -51.9440, -16.7760

Split Complementary

Split-complementary colors differ from the complementary color scheme. The scheme consists of three colors, the original color and two neighbors of the complement color.



102.1130, -96.0050, -16.7170



126.9590, 51.9440, 16.7760



97.8490, -78.4870, -36.8470

Square

The Square scheme is like the rectangle color scheme, but the four colors are evenly spaced on the color wheel.



126.9590, 51.9440, 16.7760



120.3930, 11.0540, -24.1300



101.6110, -89.0800, -26.5840



128.2040, -17.2890, 21.4870

Rectangle

The Rectangle color scheme consists of four colors that form a rectangle on the color wheel.



126.9590, 51.9440, 16.7760



124.7500, 41.2660, -9.9820



101.6110, -89.0800, -26.5840



109.7720, -78.4470, -4.5190

Sweetspot

The Sweet Spot groups the original color and five complimentary colors.



126.9590, 51.9440, 16.7760



219.3400, 19.7140, 6.1620



134.4150, 25.4380, 45.6140



108.5670, 11.6450, 3.7170



250.0000, 0.0000, 0.0000



122.0000, 0.0000, -0.0000

Same Dimension

The Same Dimension uses a secret algorithm to generate beautiful new colors.



126.9590, 51.9440, 16.7760



148.7840, 80.5980, 26.1180



152.7870, 39.8440, -6.2360



87.6910, 5.3640, 1.9080



51.3510, 92.2430, 29.8350



9.8560, 18.2010, 6.0490

Inverse Universe

The Inverse Universe completely reimagines the original color for something new.



158.0410, -51.9440, -16.7760



197.2160, -80.5980, -26.1180



132.8000, -40.1190, 5.7130



91.3090, -5.3640, -1.9080



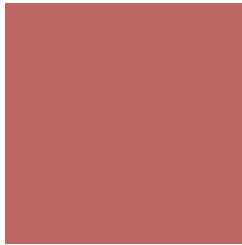
106.6490, -92.2430, -29.8350



20.5570, -17.9260, -5.5260

Previews

White Background



This preview shows how the YIQ color 126.9590, 51.9440, 16.7760 looks on a white background.

Color Contrast Check

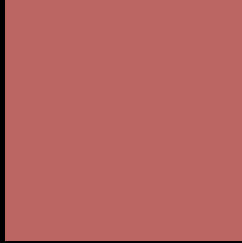
Large Text (above 18pt) WCAG AA ✓ Pass

Any Text WCAG AA × Fail

Large Text (above 18pt) WCAG AAA × Fail

Any Text WCAG AAA × Fail

Black Background



This preview shows how the YIQ color 126.9590, 51.9440, 16.7760 looks on a black background.

Color Contrast Check

Large Text (above 18pt) WCAG AA ✓ Pass

Any Text WCAG AA ✓ Pass

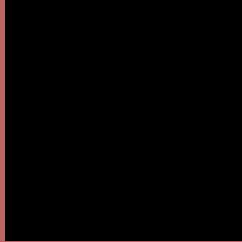
Large Text (above 18pt) WCAG AAA ✓ Pass

Any Text WCAG AAA × Fail

If you want to check with other color combinations, try the [Color Contrast Checker](#).

YIQ 126.9590, 51.9440, 16.7760

Background



This preview shows how black text looks on a background with the YIQ color 126.9590, 51.9440, 16.7760.



This preview shows how white text looks on a background with the YIQ color 126.9590, 51.9440,

Color Blindness Simulation

Color vision deficiency is a very complex topic, and I could not describe the different causes any better than Wikipedia does, so if you want to learn more, you should check out their [article about color blindness](#).

Dichromacy



Original Color

126.9590, 51.9440, 16.7760

Protanopia

126.2690, 9.3080, -3.4920

Deuteranopia

127.2940, 25.3550, -2.4610



Tritanopia

127.2240, 49.8800, 21.1440

Trichromacy



Original Color

126.9590, 51.9440, 16.7760

Protanomaly

126.5100, 24.9870, 4.2110

Deuteranomaly

127.1860, 34.7070, 4.2670

Tritanomaly

127.3550, 50.8890, 19.3770

Monochromacy



Original Color

126.9590, 51.9440, 16.7760

Achromatopsia

127.0000, -0.0000, -0.0000

Achromatomaly

127.0410, 19.1180, 5.9500

CSS Examples

Text

The CSS property to change the color of the text to YIQ 126.9590, 51.9440, 16.7760 is called "color". The color property can be set on classes, ids or directly on the HTML element.

This example shows how text in the color `rgb(187, 102, 98)` looks like.

```
.text, #text, p{  
    color:rgb(187, 102, 98)  
}
```

If you want to add a text shadow in that color use the text-shadow property, you can generate a text shadow directly with our [CSS Text Shadow Generator](#).

Here you see how black text with a 4 pixel rgb(187, 102, 98) colored shadow looks like.

```
.shadow{ text-shadow: 4px 4px 2px rgb(187, 102, 98) }
```

Border

The CSS property to change the border of an element to YIQ 126.9590, 51.9440, 16.7760 is called "border". The border property can be set on classes, ids or directly on the HTML element.

This example shows the color as border, it can be applied via the CSS property "border" or "border-color".

```
.border, #border, table{ border:4px solid rgb(187, 102, 98) }
```


If only the border color should be changed use the property `border-color`.

```
.border{ border-color:rgb(187, 102, 98) }
```

If you want to add a box shadow in that color use:

Here you see how a box with a 4 pixel `rgb(187, 102, 98)` colored shadow looks like.

```
.boxshadow{ -moz-box-shadow:4px 4px 4px  
4px rgb(187, 102, 98); -webkit-box-  
shadow:4px 4px 4px 4px rgb(187, 102, 98);  
box-shadow:4px 4px 4px 4px rgb(187, 102,  
98) }
```

Background

The CSS property to change the background color of an element to YIQ 126.9590, 51.9440, 16.7760 is called "background". The background property can be set on classes, ids or directly on the HTML element.

```
.background, #background, body{  
background: rgb(187, 102, 98) }
```

If only the background color should be changed can be used:

```
.background{ background-color: rgb(187,  
102, 98) }
```

This example shows the color as background, it is applied via the CSS property "background".

To optimize and compress your CSS code, you can use our [online CSS compressor and optimizer](#) based on csstidy. If you want to create a linear or radial gradient as background or border, check our [CSS Gradient Generator](#).

Hey! You found this booklet interesting? Support Converting Colors with the new Membership Option!

The pro membership hides all ads, plus gives you double the colors in the color bucket, and more awesome pro features!

[Learn more, Memberships starting at \\$2.50/m!](#)

**Follow me
on Twitter!**

@ConvertingColor