

Converting Colors

YIQ(128.5240, 76.2390, 44.5510)

Have a look what the booklet for
YIQ(128.5240, 76.2390, 44.5510)
contains.

YIQ(128.5240, 76.2390, 44.5510)	3
<i>Conversions</i>	4
<i>Details</i>	6
<i>Harmonies</i>	12
<i>Previews</i>	24
<i>Color Blindness Simulation</i>	28
<i>CSS Examples</i>	31

Color

**YIQ(128.5240, 76.2390,
44.5510)**

Conversions

Conversions Part 1

Format	Color
Hex	E54F78
RGB	229, 79, 120
RGB Percent	90%, 31%, 47%
CMY	0.1016, 0.6904, 0.5291
CMYK	0.00, 0.66, 0.48, 0.10
HSL	344°, 74%, 60%
HSV	344°, 66%, 90%
XYZ	38.5300, 23.6147, 20.3186
YIQ	128.5240, 76.2390, 44.5510

Conversions

Conversions Part 2

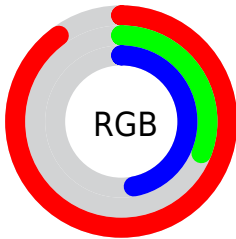
Format	Color
R_{YB}	229, 79, 120
Decimal	15028088
CIE _{Lab}	55.70, 61.00, 9.33
CIE _{LCh}	56, 61.705, 8.697
Yxy	23.6147, 0.4672, 0.2864
Android (android.graphics.Color)	4293218168 (0xFFE54F78)
YUV	128.5240, -4.2023, 88.1175
Hunter-Lab	48.5950, 56.4882, 9.2260

Details

The YIQ color **128.5240, 76.2390, 44.5510** is a dark color, and the websafe version is hex **CC3366**. The color can be described as middle muted rose. A complement of this color would be **179.4760, -76.2390, -44.5510**, and the grayscale version is **129.0000, 0.0000, 0.0000**.

A 20% lighter version of the original color is **175.6850, 59.3680, 36.4240**, and **59.6140, 76.4660, 56.9620** is the 20% darker color. If you saturate the color by 10%, you get **113.0850, 88.0210, 51.2930**, and if you desaturate by 10%, it is **143.9630, 64.4570, 37.8090**.

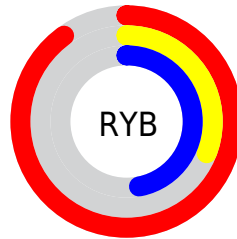
Distribution



Red (90%)

Green (31%)

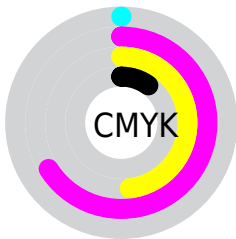
Blue (47%)



Red (90%)

Yellow (31%)

Blue (47%)

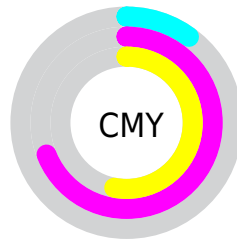


Cyan (0%)

Magenta (66%)

Yellow (48%)

Black (10%)



Cyan (10%)

Magenta (69%)

Yellow (53%)

Brightness & Saturation Gradients

These gradients show how the YIQ color 128.5240, 76.2390, 44.5510 changes by changing the brightness by 10 percent. The first figure shows a shift by +10% for each color and the second figure -10%.

Similar to the brightness gradients but the following saturation gradients show a change of the YIQ color 128.5240, 76.2390, 44.5510 by changing the saturation by 10% instead.

■ 128.5240, 76.2390,
44.5510

■ 128.5240, 76.2390,
44.5510

■ 255.0000, -0.0000,
-0.0000

■ 98.2080, 74.3130,
46.4170

■ 175.6850, 59.3680,
36.4240

■ 59.6140, 76.4660,
56.9620

■ 195.1990, 43.0010,
30.1770

■ 46.9620, 66.1980,
44.8060

■ 215.4140, 26.0380,
23.7180

■ 35.8970, 55.6550,
32.1270

■ 235.6290, 9.0750,
17.2590

■ 24.1480, 47.0380,
17.5820

■ 253.2390, 0.8250,
1.5690

■ 15.7760, 30.3500,
11.6460

■ 0.0000, 0.0000,

0.0000

■ 128.5240, 76.2390,
44.5510

■ 128.5240, 76.2390,
44.5510

■ 113.0850, 88.0210,
51.2930

■ 143.9630, 64.4570,
37.8090

■ 97.7600, 99.4820,
58.3460

■ 159.2880, 52.9960,
30.7560

■ 82.3210, 111.2640,
65.0880

■ 174.7270, 41.2140,
24.0140

■ 75.6530, 116.2610,
68.1410

■ 190.1660, 29.4320,
17.2720

■ 204.9040, 18.2460,
10.7420

■ 220.3430, 6.4640,
4.0000

■ 235.7820, -5.3180,
-2.7420

■ 246.9980,
-14.8540, -6.1340

■ 247.2260,
-15.4960, -5.5120

Harmonies

Analogous

The Analogous color harmony consists of three colors that are next to each other on the color wheel.



133.9830, 44.5100, 52.3980



128.5240, 76.2390, 44.5510



128.2370, 83.3960, 19.4600

Triad

The Triadic color harmony groups three colors that are evenly spaced from another and form a triangle on the color wheel.



128.5240, 76.2390, 44.5510



118.1500, -2.2840, -46.7320



114.6120, -116.0430, -5.9870

Complementary

The Complementary color scheme is a pair of colors which are on the opposite of each other on the color wheel.



128.5240, 76.2390, 44.5510



179.4760, -76.2390, -44.5510

Split Complementary

Split-complementary colors differ from the complementary color scheme. The scheme consists of three colors, the original color and two neighbors of the complement color.



114.8450, -107.0540, -20.2220



128.5240, 76.2390, 44.5510



102.0600, -72.4320, -52.9760

Square

The Square scheme is like the rectangle color scheme, but the four colors are evenly spaced on the color wheel.



128.5240, 76.2390, 44.5510



123.1870, 49.0200, -40.3880



109.6180, -90.9580, -36.6060



111.3890, -104.6290, 7.4270

Rectangle

The Rectangle color scheme consists of four colors that form a rectangle on the color wheel.



128.5240, 76.2390, 44.5510



128.8270, 77.8980, -2.0540



109.6180, -90.9580, -36.6060



115.4610, -114.3000, -10.0440

Sweetspot

The Sweet Spot groups the original color and five complimentary colors.



128.5240, 76.2390, 44.5510



220.8450, 25.9020, 15.1660



128.3920, 16.2180, 69.5460



107.1810, 15.9080, 9.0600



0.0000, 0.0000, 0.0000



128.0000, -0.0000, -0.0000

Same Dimension

The Same Dimension uses a secret algorithm to generate beautiful new colors.



128.5240, 76.2390, 44.5510



120.3690, 102.1410, 59.7170



142.6340, 80.6000, 15.0640



106.9300, 6.1890, 3.4770



59.1070, 90.9550, 53.1870



16.8450, 25.9020, 15.1660

Inverse Universe

The Inverse Universe completely reimagines the original color for something new.



128.5240, 76.2390, 44.5510



120.3690, 102.1410, 59.7170



165.3660, -80.6000, -15.0640



106.9300, 6.1890, 3.4770



59.1070, 90.9550, 53.1870



16.8450, 25.9020, 15.1660

Previews

White Background



This preview shows how the YIQ color 128.5240, 76.2390, 44.5510 looks on a white background.

Color Contrast Check

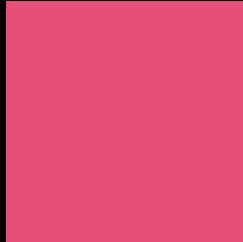
Large Text (above 18pt) WCAG AA ✓ Pass

Any Text WCAG AA × Fail

Large Text (above 18pt) WCAG AAA × Fail

Any Text WCAG AAA × Fail

Black Background



This preview shows how the YIQ color 128.5240, 76.2390, 44.5510 looks on a black background.

Color Contrast Check

Large Text (above 18pt) WCAG AA ✓ Pass

Any Text WCAG AA ✓ Pass

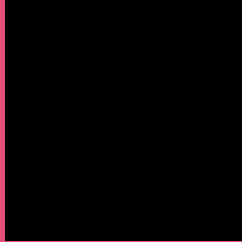
Large Text (above 18pt) WCAG AAA ✓ Pass

Any Text WCAG AAA × Fail

If you want to check with other color combinations, try the [Color Contrast Checker](#).

YIQ 128.5240, 76.2390, 44.5510

Background



This preview shows how black text looks on a background with the YIQ color 128.5240, 76.2390, 44.5510.

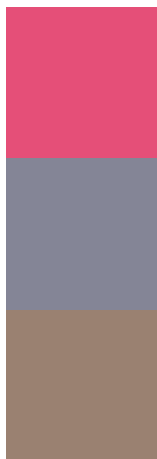


This preview shows how white text looks on a background with the YIQ color 128.5240, 76.2390,

Color Blindness Simulation

Color vision deficiency is a very complex topic, and I could not describe the different causes any better than Wikipedia does, so if you want to learn more, you should check out their [article about color blindness](#).

Dichromacy



Original Color

128.5240, 76.2390, 44.5510

Protanopia

134.6390, -6.0530, 5.0750

Deuteranopia

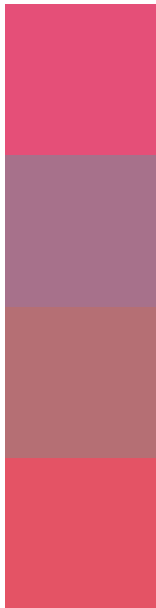
134.6510, 20.0360, 0.3240



Tritanopia

128.0280, 83.0270, 31.6590

Trichromacy



Original Color

128.5240, 76.2390, 44.5510

Protanomaly

132.1100, 23.8380, 19.5340

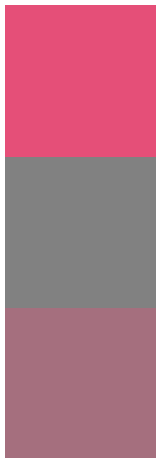
Deuteranomaly

132.5000, 40.1150, 16.3950

Tritanomaly

128.4070, 80.6420, 36.3380

Monochromacy



Original Color

128.5240, 76.2390, 44.5510

Achromatopsia

129.0000, 0.0000, 0.0000

Achromatomaly

128.8560, 27.3690, 16.1130

CSS Examples

Text

The CSS property to change the color of the text to YIQ 128.5240, 76.2390, 44.5510 is called "color". The color property can be set on classes, ids or directly on the HTML element.

This example shows how text in the color `rgb(229, 79, 120)` looks like.

```
.text, #text, p{  
    color:rgb(229, 79, 120)  
}
```

If you want to add a text shadow in that color use the text-shadow property, you can generate a text shadow directly with our [CSS Text Shadow Generator](#).

Here you see how black text with a 4 pixel rgb(229, 79, 120) colored shadow looks like.

```
.shadow{ text-shadow: 4px 4px 2px rgb(229, 79, 120) }
```

Border

The CSS property to change the border of an element to YIQ 128.5240, 76.2390, 44.5510 is called "border". The border property can be set on classes, ids or directly on the HTML element.

This example shows the color as border, it can be applied via the CSS property "border" or "border-color".

```
.border, #border, table{ border:4px solid rgb(229, 79, 120) }
```


If only the border color should be changed use the property `border-color`.

```
.border{ border-color:rgb(229, 79, 120) }
```

If you want to add a box shadow in that color use:

Here you see how a box with a 4 pixel `rgb(229, 79, 120)` colored shadow looks like.

```
.boxshadow{ -moz-box-shadow:4px 4px 4px  
4px rgb(229, 79, 120); -webkit-box-  
shadow:4px 4px 4px 4px rgb(229, 79, 120);  
box-shadow:4px 4px 4px 4px rgb(229, 79,  
120) }
```

Background

The CSS property to change the background color of an element to YIQ 128.5240, 76.2390, 44.5510 is called "background". The background property can be set on classes, ids or directly on the HTML element.

```
.background, #background, body{  
background: rgb(229, 79, 120) }
```

If only the background color should be changed can be used:

```
.background{ background-color: rgb(229, 79,  
120) }
```

This example shows the color as background, it is applied via the CSS property "background".

To optimize and compress your CSS code, you can use our [online CSS compressor and optimizer](#) based on csstidy. If you want to create a linear or radial gradient as background or border, check our [CSS Gradient Generator](#).

Hey! You found this booklet interesting? Support Converting Colors with the new Membership Option!

The pro membership hides all ads, plus gives you double the colors in the color bucket, and more awesome pro features!

[Learn more, Memberships starting at \\$2.50/m!](#)

**Follow me
on Twitter!**

@ConvertingColor