

Converting Colors

YIQ(128.7960, 35.6250, -1.3590)

Have a look what the booklet for
YIQ(128.7960, 35.6250, -1.3590)
contains.

YIQ(128.7960, 35.6250, -1.3590)	3
<i>Conversions</i>	4
<i>Details</i>	6
<i>Harmonies</i>	12
<i>Previews</i>	24
<i>Color Blindness Simulation</i>	28
<i>CSS Examples</i>	31

Color

**YIQ(128.7960, 35.6250,
-1.3590)**

Conversions

Conversions Part 1

Format	Color
Hex	A27857
RGB	162, 120, 87
RGB Percent	64%, 47%, 34%
CMY	0.3646, 0.5295, 0.6587
CMYK	0.00, 0.26, 0.46, 0.36
HSL	26°, 30%, 49%
HSV	26°, 46%, 64%
XYZ	23.3408, 21.8010, 12.0038
YIQ	128.7960, 35.6250, -1.3590

Conversions

Conversions Part 2

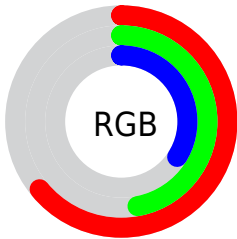
Format	Color
R _Y B	162, 146, 87
Decimal	10647639
CIE Lab	53.82, 12.18, 24.47
CIE LCh	54, 27.336, 63.537
Yxy	21.8010, 0.4084, 0.3815
Android (android.graphics.Color)	4288837719 (0xFFA27857)
YUV	128.7960, -20.6054, 29.1199
Hunter-Lab	46.6915, 7.5208, 17.4414

Details

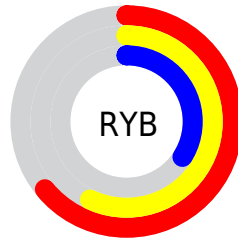
The YIQ color **128.7960, 35.6250, -1.3590** is a dark color, and the websafe version is hex **996633**. A complement of this color would be **120.2040, -35.6250, 1.3590**, and the grayscale version is **129.0000, 0.0000, 0.0000**.

A 20% lighter version of the original color is **182.0630, 39.2470, -0.9210**, and **78.6430, 31.6820, -1.4860** is the 20% darker color. If you saturate the color by 10%, you get **121.6890, 43.2360, -1.6280**, and if you desaturate by 10%, it is **135.9030, 28.0140, -1.0900**.

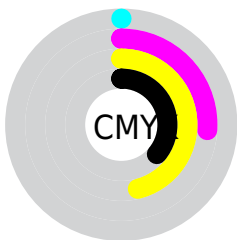
Distribution



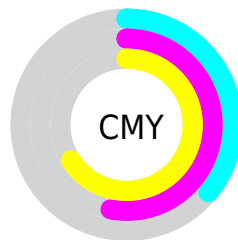
- Red (64%)
- Green (47%)
- Blue (34%)



- Red (64%)
- Yellow (57%)
- Blue (34%)



- Cyan (0%)
- Magenta (26%)
- Yellow (46%)
- Black (36%)



- Cyan (36%)
- Magenta (53%)
- Yellow (66%)

Brightness & Saturation Gradients

These gradients show how the YIQ color 128.7960, 35.6250, -1.3590 changes by changing the brightness by 10 percent. The first figure shows a shift by +10% for each color and the second figure -10%.

Similar to the brightness gradients but the following saturation gradients show a change of the YIQ color 128.7960, 35.6250, -1.3590 by changing the saturation by 10% instead.

■ 128.7960, 35.6250,
-1.3590

■ 128.7960, 35.6250,
-1.3590

■ 255.0000, -0.0000,
-0.0000

■ 103.3120, 34.1120,
-1.4720

■ 182.0630, 39.2470,
-0.9210

■ 78.6430, 31.6820,
-1.4860

■ 210.2480, 40.1640,
-1.0200

■ 55.5610, 28.9770,
-2.0230

■ 231.8550, 27.9690,
-5.7830

■ 33.7780, 26.8680,
-2.3480

■ 250.8960, 11.5560,
-11.1960

■ 12.5140, 19.1640,
5.1160

■ 254.0880, 2.5680,
-2.4880

■ 0.0000, 0.0000,
0.0000

■ 128.7960, 35.6250,
-1.3590

■ 128.7960, 35.6250,
-1.3590

■ 121.6890, 43.2360,
-1.6280

■ 135.9030, 28.0140,
-1.0900

■ 114.5820, 50.8470,
-1.8970

■ 143.0100, 20.4030,
-0.8210

■ 107.3610, 58.7790,
-2.4770

■ 150.2310, 12.4710,
-0.2410

■ 100.2540, 66.3900,
-2.7460

■ 157.3380, 4.8600,
0.0280

■ 93.1470, 74.0010,
-3.0150

■ 164.4450, -2.7510,
0.2970

■ 90.1150, 77.0270,
-2.7890

■ 171.5520,
-10.3620, 0.5660

■ 179.2460,
-18.2480, 0.3120

■ 186.4670,

-26.1800, 0.8920

■ 193.5740,
-33.7910, 1.1610

Harmonies

Analogous

The Analogous color harmony consists of three colors that are next to each other on the color wheel.



130.2130, 39.2450, 10.1330



128.7960, 35.6250, -1.3590



126.8280, 23.4310, -11.6490

Triad

The Triadic color harmony groups three colors that are evenly spaced from another and form a triangle on the color wheel.



128.7960, 35.6250, -1.3590



115.9400, -44.4700, -20.0700



131.1310, -7.0180, 17.0620

Complementary

The Complementary color scheme is a pair of colors which are on the opposite of each other on the color wheel.



128.7960, 35.6250, -1.3590



120.2040, -35.6250, 1.3590

Split Complementary

Split-complementary colors differ from the complementary color scheme. The scheme consists of three colors, the original color and two neighbors of the complement color.



126.4590, -31.7290, 7.8470



128.7960, 35.6250, -1.3590



113.7780, -61.3890, -16.3090

Square

The Square scheme is like the rectangle color scheme, but the four colors are evenly spaced on the color wheel.



128.7960, 35.6250, -1.3590



120.9890, -19.8030, -21.0750



118.9350, -54.1010, -5.2130



132.1570, 16.4560, 21.1600

Rectangle

The Rectangle color scheme consists of four colors that form a rectangle on the color wheel.



128.7960, 35.6250, -1.3590



125.4350, 11.2360, -16.4120



118.9350, -54.1010, -5.2130



129.7710, -14.8120, 15.1400

Sweetspot

The Sweet Spot groups the original color and five complimentary colors.



128.7960, 35.6250, -1.3590



198.6010, 14.3050, -0.4390



114.3270, 30.8970, 29.2730



99.0780, 8.5280, -0.3680



235.0000, 0.0000, -0.0000



107.0000, -0.0000, 0.0000

Same Dimension

The Same Dimension uses a secret algorithm to generate beautiful new colors.



128.7960, 35.6250, -1.3590



159.1050, 56.6240, -1.9680



150.5150, 25.4500, -20.7100



78.0390, 4.2640, -0.1840



80.9230, 68.8200, -2.7320



10.0780, 8.5280, -0.3680

Inverse Universe

The Inverse Universe completely reimagines the original color for something new.



120.2040, -35.6250, 1.3590



145.8950, -56.6240, 1.9680



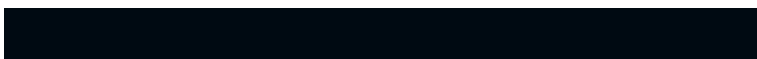
98.4850, -25.4500, 20.7100



76.9610, -4.2640, 0.1840



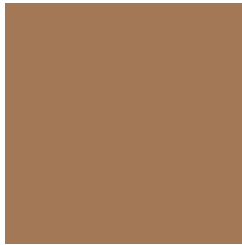
64.0770, -68.8200, 2.7320



7.9220, -8.5280, 0.3680

Previews

White Background



This preview shows how the YIQ color 128.7960, 35.6250, -1.3590 looks on a white background.

Color Contrast Check

Large Text (above 18pt) WCAG AA ✓ Pass

Any Text WCAG AA × Fail

Large Text (above 18pt) WCAG AAA × Fail

Any Text WCAG AAA × Fail

Black Background



This preview shows how the YIQ color 128.7960, 35.6250, -1.3590 looks on a black background.

Color Contrast Check

Large Text (above 18pt) WCAG AA ✓ Pass

Any Text WCAG AA ✓ Pass

Large Text (above 18pt) WCAG AAA ✓ Pass

Any Text WCAG AAA × Fail

If you want to check with other color combinations, try the [Color Contrast Checker](#).

YIQ 128.7960, 35.6250, -1.3590

Background



This preview shows how black text looks on a background with the YIQ color 128.7960, 35.6250, -1.3590.



This preview shows how white text looks on a background with the YIQ color 128.7960, 35.6250, -1.3590.

-1.3590.

Color Blindness Simulation

Color vision deficiency is a very complex topic, and I could not describe the different causes any better than Wikipedia does, so if you want to learn more, you should check out their [article about color blindness](#).

Dichromacy



Original Color

128.7960, 35.6250, -1.3590

Protanopia

127.6580, 18.1580, -9.6980

Deuteranopia

128.0510, 30.3530, -4.9350



Tritanopia

130.9760, 26.9110, 13.3990

Trichromacy



Original Color

128.7960, 35.6250, -1.3590

Protanomaly

128.1750, 24.0720, -6.7440

Deuteranomaly

128.3610, 32.4160, -3.7760

Tritanomaly

130.3690, 29.9380, 8.0980

Monochromacy



Original Color

128.7960, 35.6250, -1.3590

Achromatopsia

129.0000, 0.0000, 0.0000

Achromatomaly

129.1170, 12.7920, -0.5520

CSS Examples

Text

The CSS property to change the color of the text to YIQ 128.7960, 35.6250, -1.3590 is called "color". The color property can be set on classes, ids or directly on the HTML element.

This example shows how text in the color `rgb(162, 120, 87)` looks like.

```
.text, #text, p{  
    color:rgb(162, 120, 87)  
}
```

If you want to add a text shadow in that color use the text-shadow property, you can generate a text shadow directly with our [CSS Text Shadow Generator](#).

Here you see how black text with a 4 pixel rgb(162, 120, 87) colored shadow looks like.

```
.shadow{ text-shadow: 4px 4px 2px rgb(162, 120, 87) }
```

Border

The CSS property to change the border of an element to YIQ 128.7960, 35.6250, -1.3590 is called "border". The border property can be set on classes, ids or directly on the HTML element.

This example shows the color as border, it can be applied via the CSS property "border" or "border-color".

```
.border, #border, table{ border:4px solid rgb(162, 120, 87) }
```


If only the border color should be changed use the property border-color.

```
.border{ border-color:rgb(162, 120, 87) }
```

If you want to add a box shadow in that color use:

Here you see how a box with a 4 pixel rgb(162, 120, 87) colored shadow looks like.

```
.boxshadow{ -moz-box-shadow:4px 4px 4px  
4px rgb(162, 120, 87); -webkit-box-  
shadow:4px 4px 4px 4px rgb(162, 120, 87);  
box-shadow:4px 4px 4px 4px rgb(162, 120,  
87) }
```

Background

The CSS property to change the background color of an element to YIQ 128.7960, 35.6250, -1.3590 is called "background". The background property can be set on classes, ids or directly on the HTML element.

```
.background, #background, body{  
background: rgb(162, 120, 87) }
```

If only the background color should be changed can be used:

```
.background{ background-color: rgb(162,  
120, 87) }
```

This example shows the color as background, it is applied via the CSS property "background".

To optimize and compress your CSS code, you can use our [online CSS compressor and optimizer](#) based on csstidy. If you want to create a linear or radial gradient as background or border, check our [CSS Gradient Generator](#).

Hey! You found this booklet interesting? Support Converting Colors with the new Membership Option!

The pro membership hides all ads, plus gives you double the colors in the color bucket, and more awesome pro features!

[Learn more, Memberships starting at \\$2.50/m!](#)

**Follow me
on Twitter!**

@ConvertingColor