

Converting Colors

YIQ(129.1970, 45.3420, 15.2780)

Have a look what the booklet for
YIQ(129.1970, 45.3420, 15.2780)
contains.

YIQ(129.1970, 45.3420, 15.2780)	3
<i>Conversions</i>	4
<i>Details</i>	6
<i>Harmonies</i>	12
<i>Previews</i>	24
<i>Color Blindness Simulation</i>	28
<i>CSS Examples</i>	31

Color

**YIQ(129.1970, 45.3420,
15.2780)**

Conversions

Conversions Part 1

Format	Color
Hex	B66B69
RGB	182, 107, 105
RGB Percent	71%, 42%, 41%
CMY	0.2861, 0.5805, 0.5881
CMYK	0.00, 0.41, 0.42, 0.29
HSL	1°, 35%, 56%
HSV	2°, 42%, 71%
XYZ	27.1087, 21.4803, 16.0944
YIQ	129.1970, 45.3420, 15.2780

Conversions

Conversions Part 2

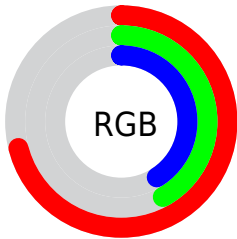
Format	Color
R _Y B	182, 107, 105
Decimal	11955049
CIE Lab	53.47, 29.68, 14.03
CIE LCh	53, 32.829, 25.302
Yxy	21.4803, 0.4191, 0.3321
Android (android.graphics.Color)	4290145129 (0xFFB66B69)
YUV	129.1970, -11.9291, 46.3082
Hunter-Lab	46.3468, 23.2993, 11.8537

Details

The YIQ color **129.1970, 45.3420, 15.2780** is a dark color, and the websafe version is hex **996666**. A complement of this color would be **157.8030, -45.3420, -15.2780**, and the grayscale version is **129.0000, 0.0000, 0.0000**.

A 20% lighter version of the original color is **182.8770, 49.2390, 16.2390**, and **78.3320, 40.5280, 14.4160** is the 20% darker color. If you saturate the color by 10%, you get **116.5790, 56.0700, 19.0940**, and if you desaturate by 10%, it is **141.8150, 34.6140, 11.4620**.

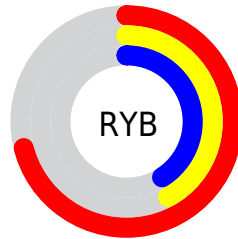
Distribution



Red (71%)

Green (42%)

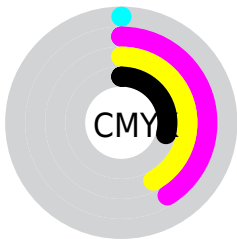
Blue (41%)



Red (71%)

Yellow (42%)

Blue (41%)

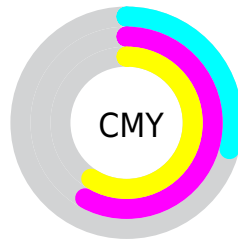


Cyan (0%)

Magenta (41%)

Yellow (42%)

Black (29%)



Cyan (29%)

Magenta (58%)

Yellow (59%)

Brightness & Saturation Gradients

These gradients show how the YIQ color 129.1970, 45.3420, 15.2780 changes by changing the brightness by 10 percent. The first figure shows a shift by +10% for each color and the second figure -10%.

Similar to the brightness gradients but the following saturation gradients show a change of the YIQ color 129.1970, 45.3420, 15.2780 by changing the saturation by 10% instead.

■ 129.1970, 45.3420,
15.2780

■ 129.1970, 45.3420,
15.2780

■ 255.0000, -0.0000,
-0.0000

■ 103.4140, 43.2330,
14.9530

■ 182.8770, 49.2390,
16.2390

■ 78.3320, 40.5280,
14.4160

■ 206.8760, 41.8120,
13.1720

■ 53.6630, 38.0980,
14.4020

■ 226.5040, 25.1240,
7.2360

■ 28.9340, 35.8970,
15.7450

■ 246.1320, 8.4360,
1.3000

■ 14.6510, 29.2040,
10.3880

■ 1.1960, 2.3840,
0.8480

■ 0.0000, 0.0000,

0.0000

■ 129.1970, 45.3420,
15.2780

■ 129.1970, 45.3420,
15.2780

■ 116.5790, 56.0700,
19.0940

■ 141.8150, 34.6140,
11.4620

■ 103.9610, 66.7980,
22.9100

■ 153.8460, 24.1610,
8.1690

■ 91.8160, 77.5720,
25.8920

■ 166.5780, 13.1120,
4.6640

■ 79.1980, 88.3000,
29.7080

■ 179.1960, 2.3840,
0.8480

■ 66.5800, 99.0280,
33.5240

■ 191.8140, -8.3440,
-2.9680

■ 57.3530, 107.0970,
35.9690

■ 203.8450,
-18.7970, -6.2610

■ 216.4630,
-29.5250, -10.0770

■ 229.1950,
-40.5740, -13.5820

■ 233.1730,
-43.5080, -15.4760

Harmonies

Analogous

The Analogous color harmony consists of three colors that are next to each other on the color wheel.



130.9050, 34.8410, 23.8730



129.1970, 45.3420, 15.2780



127.9820, 43.9690, 1.6090

Triad

The Triadic color harmony groups three colors that are evenly spaced from another and form a triangle on the color wheel.



129.1970, 45.3420, 15.2780



118.7350, -16.2720, -24.4960



121.1840, -50.0680, 4.3000

Complementary

The Complementary color scheme is a pair of colors which are on the opposite of each other on the color wheel.



129.1970, 45.3420, 15.2780



157.8030, -45.3420, -15.2780

Split Complementary

Split-complementary colors differ from the complementary color scheme. The scheme consists of three colors, the original color and two neighbors of the complement color.



101.9130, -92.5660, -18.4700



129.1970, 45.3420, 15.2780



111.3150, -50.2000, -26.3600

Square

The Square scheme is like the rectangle color scheme, but the four colors are evenly spaced on the color wheel.



129.1970, 45.3420, 15.2780



123.0990, 12.0620, -20.3700



100.5680, -87.5210, -27.3050



129.0960, -17.1050, 18.1510

Rectangle

The Rectangle color scheme consists of four colors that form a rectangle on the color wheel.



129.1970, 45.3420, 15.2780



126.5910, 37.4600, -7.0840



100.5680, -87.5210, -27.3050



117.0360, -61.5750, -1.9190

Sweetspot

The Sweet Spot groups the original color and five complimentary colors.



129.1970, 45.3420, 15.2780



215.8560, 18.2010, 6.0490



136.6870, 21.4960, 39.9600



106.6810, 11.3240, 4.0280



247.0000, -0.0000, -0.0000



120.0000, -0.0000, -0.0000

Same Dimension

The Same Dimension uses a secret algorithm to generate beautiful new colors.



129.1970, 45.3420, 15.2780



153.9400, 71.2910, 24.0830



151.5030, 34.8920, -4.5960



85.6910, 5.3640, 1.9080



48.9920, 91.8760, 30.9800



8.9590, 16.4130, 5.4130

Inverse Universe

The Inverse Universe completely reimagines the original color for something new.



157.8030, -45.3420, -15.2780



199.0600, -71.2910, -24.0830



135.4970, -34.8920, 4.5960



89.3090, -5.3640, -1.9080



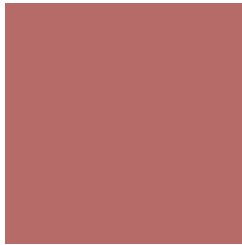
107.0080, -91.8760, -30.9800



19.0410, -16.4130, -5.4130

Previews

White Background



This preview shows how the YIQ color 129.1970, 45.3420, 15.2780 looks on a white background.

Color Contrast Check

Large Text (above 18pt) WCAG AA ✓ Pass

Any Text WCAG AA × Fail

Large Text (above 18pt) WCAG AAA × Fail

Any Text WCAG AAA × Fail

Black Background



This preview shows how the YIQ color 129.1970, 45.3420, 15.2780 looks on a black background.

Color Contrast Check

Large Text (above 18pt) WCAG AA ✓ Pass

Any Text WCAG AA ✓ Pass

Large Text (above 18pt) WCAG AAA ✓ Pass

Any Text WCAG AAA × Fail

If you want to check with other color combinations, try the [Color Contrast Checker](#).

YIQ 129.1970, 45.3420, 15.2780

Background



This preview shows how black text looks on a background with the YIQ color 129.1970, 45.3420, 15.2780.



This preview shows how white text looks on a background with the YIQ color 129.1970, 45.3420,

15.2780.

Color Blindness Simulation

Color vision deficiency is a very complex topic, and I could not describe the different causes any better than Wikipedia does, so if you want to learn more, you should check out their [article about color blindness](#).

Dichromacy



Original Color

129.1970, 45.3420, 15.2780

Protanopia

128.0130, 7.1530, -2.9830

Deuteranopia

128.3800, 22.2370, -1.0190



Tritanopia

129.8210, 43.6450, 18.5010

Trichromacy



Original Color

129.1970, 45.3420, 15.2780

Protanomaly

128.2430, 21.3650, 3.7730

Deuteranomaly

128.5600, 30.7180, 4.9740

Tritanomaly

129.4790, 44.6080, 17.5680

Monochromacy



Original Color

129.1970, 45.3420, 15.2780

Achromatopsia

129.0000, 0.0000, 0.0000

Achromatomaly

128.9590, 16.4130, 5.4130

CSS Examples

Text

The CSS property to change the color of the text to YIQ 129.1970, 45.3420, 15.2780 is called "color". The color property can be set on classes, ids or directly on the HTML element.

This example shows how text in the color `rgb(182, 107, 105)` looks like.

```
.text, #text, p{  
    color:rgb(182, 107, 105)  
}
```

If you want to add a text shadow in that color use the text-shadow property, you can generate a text shadow directly with our [CSS Text Shadow Generator](#).

Here you see how black text with a 4 pixel rgb(182, 107, 105) colored shadow looks like.

```
.shadow{ text-shadow: 4px 4px 2px rgb(182, 107, 105) }
```

Border

The CSS property to change the border of an element to YIQ 129.1970, 45.3420, 15.2780 is called "border". The border property can be set on classes, ids or directly on the HTML element.

This example shows the color as border, it can be applied via the CSS property "border" or "border-color".

```
.border, #border, table{ border:4px solid rgb(182, 107, 105) }
```


If only the border color should be changed use the property `border-color`.

```
.border{ border-color:rgb(182, 107, 105) }
```

If you want to add a box shadow in that color use:

Here you see how a box with a 4 pixel `rgb(182, 107, 105)` colored shadow looks like.

```
.boxshadow{ -moz-box-shadow:4px 4px 4px 4px rgb(182, 107, 105); -webkit-box-shadow:4px 4px 4px 4px rgb(182, 107, 105); box-shadow:4px 4px 4px 4px rgb(182, 107, 105) }
```

Background

The CSS property to change the background color of an element to YIQ 129.1970, 45.3420, 15.2780 is called "background". The background property can be set on classes, ids or directly on the HTML element.

```
.background, #background, body{  
background: rgb(182, 107, 105) }
```

If only the background color should be changed can be used:

```
.background{ background-color: rgb(182,  
107, 105) }
```

This example shows the color as background, it is applied via the CSS property "background".

To optimize and compress your CSS code, you can use our [online CSS compressor and optimizer](#) based on csstidy. If you want to create a linear or radial gradient as background or border, check our [CSS Gradient Generator](#).

Hey! You found this booklet interesting? Support Converting Colors with the new Membership Option!

The pro membership hides all ads, plus gives you double the colors in the color bucket, and more awesome pro features!

[Learn more, Memberships starting at \\$2.50/m!](#)

**Follow me
on Twitter!**

@ConvertingColor