

Converting Colors

YIQ(129.5700, 70.5980, 53.1740)

Have a look what the booklet for
YIQ(129.5700, 70.5980, 53.1740)
contains.

YIQ(129.5700, 70.5980, 53.1740)	3
<i>Conversions</i>	4
<i>Details</i>	6
<i>Harmonies</i>	12
<i>Previews</i>	24
<i>Color Blindness Simulation</i>	28
<i>CSS Examples</i>	31

Color

**YIQ(129.5700, 70.5980,
53.1740)**

Conversions

Conversions Part 1

Format	Color
Hex	E64C8E
RGB	230, 76, 142
RGB Percent	90%, 30%, 56%
CMY	0.0976, 0.7022, 0.4429
CMYK	0.00, 0.67, 0.38, 0.10
HSL	334°, 76%, 60%
HSV	334°, 67%, 90%
XYZ	40.1334, 23.9549, 28.1227
YIQ	129.5700, 70.5980, 53.1740

Conversions

Conversions Part 2

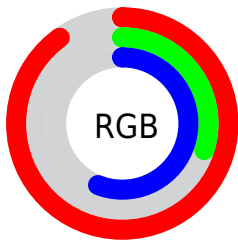
Format	Color
R_{YB}	230, 76, 142
Decimal	15092878
CIE Lab	56.04, 64.58, -3.16
CIE LCh	56, 64.659, 357.201
Yxy	23.9549, 0.4352, 0.2598
Android (android.graphics.Color)	4293282958 (0xFFE64C8E)
YUV	129.5700, 6.1280, 88.0771
Hunter-Lab	48.9438, 60.7164, 0.1931

Details

The YIQ color **129.5700, 70.5980, 53.1740** is a dark color, and the websafe version is hex **FF6699**. The color can be described as middle muted rose. A complement of this color would be **176.4300, -70.5980, -53.1740**, and the grayscale version is **129.0000, 0.0000, 0.0000**.

A 20% lighter version of the original color is **177.2470, 52.2140, 44.9340**, and **61.3180, 71.7880, 64.6520** is the 20% darker color. If you saturate the color by 10%, you get **114.5870, 81.0960, 61.1600**, and if you desaturate by 10%, it is **144.5530, 60.1000, 45.1880**.

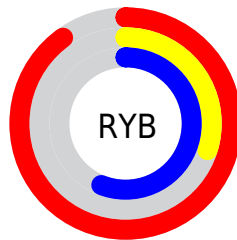
Distribution



Red (90%)

Green (30%)

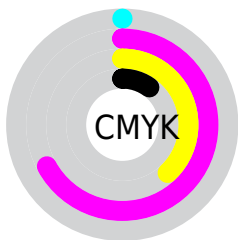
Blue (56%)



Red (90%)

Yellow (30%)

Blue (56%)

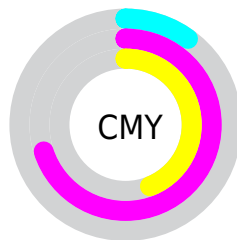


Cyan (0%)

Magenta (67%)

Yellow (38%)

Black (10%)



Cyan (10%)

Magenta (70%)

Yellow (44%)

Brightness & Saturation Gradients

These gradients show how the YIQ color 129.5700, 70.5980, 53.1740 changes by changing the brightness by 10 percent. The first figure shows a shift by +10% for each color and the second figure -10%.

Similar to the brightness gradients but the following saturation gradients show a change of the YIQ color 129.5700, 70.5980, 53.1740 by changing the saturation by 10% instead.

■ 129.5700, 70.5980,
53.1740

■ 129.5700, 70.5980,
53.1740

■ 255.0000, -0.0000,
-0.0000

■ 98.9660, 69.5430,
55.7750

■ 177.2470, 52.2140,
44.9340

■ 61.3180, 71.7880,
64.6520

■ 197.4620, 35.2510,
38.4750

■ 49.7260, 61.2910,
51.1390

■ 217.0900, 18.5630,
32.5390

■ 38.5470, 51.0690,
38.1490

■ 235.0420, 9.3500,
17.7820

■ 27.4820, 40.5260,
25.4700

■ 252.6520, 1.1000,
2.0920

■ 16.9720, 32.7340,
12.4940

■ 3.2890, 6.5560,

2.3320

■ 0.0000, 0.0000,
0.0000

■ 129.5700, 70.5980,
53.1740

■ 129.5700, 70.5980,
53.1740

■ 114.5870, 81.0960,
61.1600

■ 144.5530, 60.1000,
45.1880

■ 99.6040, 91.5940,
69.1460

■ 159.5360, 49.6020,
37.2020

■ 84.6210, 102.0920,
77.1320

■ 174.5190, 39.1040,
29.2160

■ 80.0560, 105.3010,
79.5490

■ 189.6160, 28.2850,
21.5410

■ 204.5990, 17.7870,
13.5550

■ 219.5820, 7.2890,
5.5690

■ 234.5650, -3.2090,
-2.4170

■ 246.6130,
-12.3320, -7.7880

■ 247.5250,
-14.9000, -5.3000

Harmonies

Analogous

The Analogous color harmony consists of three colors that are next to each other on the color wheel.



136.7130, 27.7750, 52.8230



129.5700, 70.5980, 53.1740



127.7080, 86.9240, 32.6200

Triad

The Triadic color harmony groups three colors that are evenly spaced from another and form a triangle on the color wheel.



129.5700, 70.5980, 53.1740



120.1450, 22.4750, -49.4050



116.9770, -115.8130, -10.1570

Complementary

The Complementary color scheme is a pair of colors which are on the opposite of each other on the color wheel.



129.5700, 70.5980, 53.1740



176.4300, -70.5980, -53.1740

Split Complementary

Split-complementary colors differ from the complementary color scheme. The scheme consists of three colors, the original color and two neighbors of the complement color.



114.8960, -103.0640, -26.4560



129.5700, 70.5980, 53.1740



98.8510, -64.7740, -59.6060

Square

The Square scheme is like the rectangle color scheme, but the four colors are evenly spaced on the color wheel.



129.5700, 70.5980, 53.1740



125.6450, 62.5900, -33.0100



108.3980, -84.7670, -44.1830



112.0990, -118.6120, 2.0280

Rectangle

The Rectangle color scheme consists of four colors that form a rectangle on the color wheel.



129.5700, 70.5980, 53.1740



129.3370, 85.6900, 10.9220



108.3980, -84.7670, -44.1830



116.7830, -112.5110, -14.9350

Sweetspot

The Sweet Spot groups the original color and five complimentary colors.



129.5700, 70.5980, 53.1740



221.7570, 23.3340, 17.6540



119.5690, 2.4180, 66.3380



107.7510, 14.3030, 10.6150



0.0000, 0.0000, 0.0000



128.0000, -0.0000, -0.0000

Same Dimension

The Same Dimension uses a secret algorithm to generate beautiful new colors.



129.5700, 70.5980, 53.1740



121.9140, 93.6570, 70.3050



127.9160, 89.0340, 27.4180



107.1580, 5.5470, 4.0990



62.2990, 81.9670, 61.8950



17.7570, 23.3340, 17.6540

Inverse Universe

The Inverse Universe completely reimagines the original color for something new.



129.5700, 70.5980, 53.1740



121.9140, 93.6570, 70.3050



178.0840, -89.0340, -27.4180



107.1580, 5.5470, 4.0990



62.2990, 81.9670, 61.8950



17.7570, 23.3340, 17.6540

Previews

White Background



This preview shows how the YIQ color 129.5700, 70.5980, 53.1740 looks on a white background.

Color Contrast Check

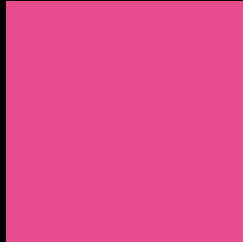
Large Text (above 18pt) WCAG AA ✓ Pass

Any Text WCAG AA × Fail

Large Text (above 18pt) WCAG AAA × Fail

Any Text WCAG AAA × Fail

Black Background



This preview shows how the YIQ color 129.5700, 70.5980, 53.1740 looks on a black background.

Color Contrast Check

Large Text (above 18pt) WCAG AA ✓ Pass

Any Text WCAG AA ✓ Pass

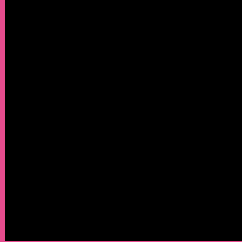
Large Text (above 18pt) WCAG AAA ✓ Pass

Any Text WCAG AAA × Fail

If you want to check with other color combinations, try the [Color Contrast Checker](#).

YIQ 129.5700, 70.5980, 53.1740

Background



This preview shows how black text looks on a background with the YIQ color 129.5700, 70.5980, 53.1740.



This preview shows how white text looks on a background with the YIQ color 129.5700, 70.5980,

Color Blindness Simulation

Color vision deficiency is a very complex topic, and I could not describe the different causes any better than Wikipedia does, so if you want to learn more, you should check out their [article about color blindness](#).

Dichromacy



Original Color

129.5700, 70.5980, 53.1740

Protanopia

134.9550, -21.3220, 11.9740

Deuteranopia

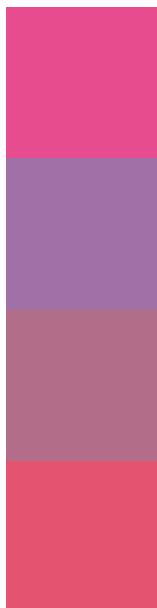
135.8380, 9.4440, 5.0600



Tritanopia

129.5440, 81.5140, 31.5460

Trichromacy



Original Color

129.5700, 70.5980, 53.1740

Protanomaly

132.8070, 11.8700, 27.1820

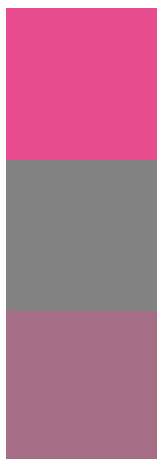
Deuteranomaly

133.4100, 31.8610, 22.8130

Tritanomaly

129.5470, 77.4320, 39.4480

Monochromacy



Original Color

129.5700, 70.5980, 53.1740

Achromatopsia

130.0000, -0.0000, -0.0000

Achromatomaly

129.4800, 25.6720, 19.3360

CSS Examples

Text

The CSS property to change the color of the text to YIQ 129.5700, 70.5980, 53.1740 is called "color". The color property can be set on classes, ids or directly on the HTML element.

This example shows how text in the color `rgb(230, 76, 142)` looks like.

```
.text, #text, p{  
    color:rgb(230, 76, 142)  
}
```

If you want to add a text shadow in that color use the text-shadow property, you can generate a text shadow directly with our [CSS Text Shadow Generator](#).

Here you see how black text with a 4 pixel rgb(230, 76, 142) colored shadow looks like.

```
.shadow{ text-shadow: 4px 4px 2px rgb(230, 76, 142) }
```

Border

The CSS property to change the border of an element to YIQ 129.5700, 70.5980, 53.1740 is called "border". The border property can be set on classes, ids or directly on the HTML element.

This example shows the color as border, it can be applied via the CSS property "border" or "border-color".

```
.border, #border, table{ border:4px solid rgb(230, 76, 142) }
```


If only the border color should be changed use the property `border-color`.

```
.border{ border-color:rgb(230, 76, 142) }
```

If you want to add a box shadow in that color use:

Here you see how a box with a 4 pixel `rgb(230, 76, 142)` colored shadow looks like.

```
.boxshadow{ -moz-box-shadow:4px 4px 4px  
4px rgb(230, 76, 142); -webkit-box-  
shadow:4px 4px 4px 4px rgb(230, 76, 142);  
box-shadow:4px 4px 4px 4px rgb(230, 76,  
142) }
```

Background

The CSS property to change the background color of an element to YIQ 129.5700, 70.5980, 53.1740 is called "background". The background property can be set on classes, ids or directly on the HTML element.

```
.background, #background, body{  
background: rgb(230, 76, 142) }
```

If only the background color should be changed can be used:

```
.background{ background-color: rgb(230, 76,  
142) }
```

This example shows the color as background, it is applied via the CSS property "background".

To optimize and compress your CSS code, you can use our [online CSS compressor and optimizer](#) based on csstidy. If you want to create a linear or radial gradient as background or border, check our [CSS Gradient Generator](#).

Hey! You found this booklet interesting? Support Converting Colors with the new Membership Option!

The pro membership hides all ads, plus gives you double the colors in the color bucket, and more awesome pro features!

[Learn more, Memberships starting at \\$2.50/m!](#)

**Follow me
on Twitter!**

@ConvertingColor