

# Converting Colors

YIQ(129.6630, 38.0980, 14.4020)

Have a look what the booklet for  
YIQ(129.6630, 38.0980, 14.4020)  
contains.

<b>YIQ(129.6630, 38.0980, 14.4020)</b> .....	3
<b><i>Conversions</i></b> .....	4
<b><i>Details</i></b> .....	6
<b><i>Harmonies</i></b> .....	12
<b><i>Previews</i></b> .....	24
<b><i>Color Blindness Simulation</i></b> .....	28
<b><i>CSS Examples</i></b> .....	31

# Color

**YIQ(129.6630, 38.0980,  
14.4020)**

# Conversions

## Conversions Part 1

<b>Format</b>	<b>Color</b>
Hex	AF6E70
RGB	175, 110, 112
RGB Percent	69%, 43%, 44%
CMY	0.3136, 0.5687, 0.5606
CMYK	0.00, 0.37, 0.36, 0.31
HSL	358°, 29%, 56%
HSV	358°, 37%, 69%
XYZ	26.1879, 21.4352, 18.0975
YIQ	129.6630, 38.0980, 14.4020

# Conversions

## Conversions Part 2

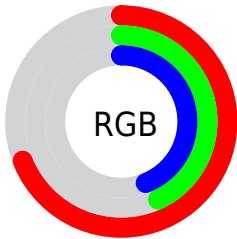
<b>Format</b>	<b>Color</b>
<b>R<sub>YB</sub></b>	175, 110, 112
Decimal	11497072
CIE <sub>Lab</sub>	53.42, 26.12, 9.73
CIE <sub>LCh</sub>	53, 27.873, 20.432
Yxy	21.4352, 0.3985, 0.3262
Android (android.graphics.Color)	4289687152 (0xFFAF6E70)
YUV	129.6630, -8.7079, 39.7605
Hunter-Lab	46.2982, 19.9439, 9.2328

# Details

The YIQ color **129.6630, 38.0980, 14.4020** is a dark color, and the websafe version is hex **996666**. A complement of this color would be **155.3370, -38.0980, -14.4020**, and the grayscale version is **130.0000, -0.0000, -0.0000**.

A 20% lighter version of the original color is **183.1580, 41.0780, 15.4620**, and **78.9830, 34.2010, 13.4410** is the 20% darker color. If you saturate the color by 10%, you get **117.1590, 48.5050, 18.5290**, and if you desaturate by 10%, it is **141.5800, 27.9660, 10.7980**.

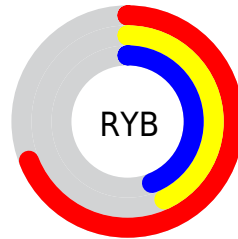
# Distribution



Red (69%)

Green (43%)

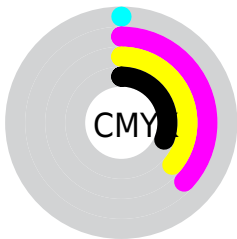
Blue (44%)



Red (69%)

Yellow (43%)

Blue (44%)

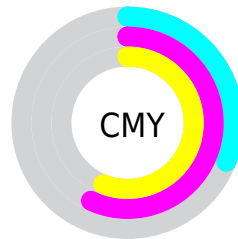


Cyan (0%)

Magenta (37%)

Yellow (36%)

Black (31%)



Cyan (31%)

Magenta (57%)

Yellow (56%)

# Brightness & Saturation Gradients

These gradients show how the YIQ color 129.6630, 38.0980, 14.4020 changes by changing the brightness by 10 percent. The first figure shows a shift by +10% for each color and the second figure -10%.

Similar to the brightness gradients but the following saturation gradients show a change of the YIQ color 129.6630, 38.0980, 14.4020 by changing the saturation by 10% instead.



■ 129.6630, 38.0980,  
14.4020

■ 129.6630, 38.0980,  
14.4020

■ 255.0000, -0.0000,  
-0.0000

■ 103.8800, 35.9890,  
14.0770

■ 183.1580, 41.0780,  
15.4620

■ 78.9830, 34.2010,  
13.4410

■ 209.5490, 38.4190,  
14.0910

■ 55.2000, 32.0920,  
13.1160

■ 229.1770, 21.7310,  
8.1550

■ 31.6450, 29.3410,  
13.4130

■ 248.8050, 5.0430,  
2.2190

■ 13.7540, 27.4160,  
9.7520

■ 0.0000, 0.0000,  
0.0000

129.6630, 38.0980,  
14.4020

129.6630, 38.0980,  
14.4020

117.1590, 48.5050,  
18.5290

141.5800, 27.9660,  
10.7980

105.2420, 58.6370,  
22.1330

154.0840, 17.5590,  
6.6710

92.7380, 69.0440,  
26.2600

166.0010, 7.4270,  
3.0670

80.8210, 79.1760,  
29.8640

178.5050, -2.9800,  
-1.0600

68.3170, 89.5830,  
33.9910

190.4220,  
-13.1120, -4.6640

56.4000, 99.7150,  
37.5950


202.9260,  
-23.5190, -8.7910

53.0090, 102.3740,  
38.9660

215.4300,  
-33.9260, -12.9180

227.3470,

-44.0580, -16.5220

 231.0800,  
-47.6800, -16.9600

# Harmonies

## Analogous

The Analogous color harmony consists of three colors that are next to each other on the color wheel.



130.9040, 27.4140, 20.8060



129.6630, 38.0980, 14.4020



128.2250, 38.9710, 4.0830

# Triad

The Triadic color harmony groups three colors that are evenly spaced from another and form a triangle on the color wheel.



129.6630, 38.0980, 14.4020



121.2630, -8.8910, -20.5950



121.8380, -43.2820, 2.4620

# Complementary

The Complementary color scheme is a pair of colors which are on the opposite of each other on the color wheel.



129.6630, 38.0980, 14.4020



155.3370, -38.0980, -14.4020

# Split Complementary

Split-complementary colors differ from the complementary color scheme. The scheme consists of three colors, the original color and two neighbors of the complement color.



114.0540, -61.9860, -10.9940



129.6630, 38.0980, 14.4020



116.6760, -34.9790, -21.3710

# Square

The Square scheme is like the rectangle color scheme, but the four colors are evenly spaced on the color wheel.



129.6630, 38.0980, 14.4020



124.2180, 13.3450, -16.0870



111.7520, -58.5000, -19.1080



128.2760, -17.7920, 14.0800



# Rectangle

The Rectangle color scheme consists of four colors that form a rectangle on the color wheel.



129.6630, 38.0980, 14.4020



127.4320, 33.6540, -4.1860



111.7520, -58.5000, -19.1080



118.8970, -50.9380, -1.9620

# Sweetspot

The Sweet Spot groups the original color and five complimentary colors.



129.6630, 38.0980, 14.4020



209.5890, 14.5790, 5.6110



136.2470, 16.6830, 33.5710



104.4850, 8.9400, 3.1800



242.0000, -0.0000, 0.0000



115.0000, -0.0000, 0.0000



# Same Dimension

The Same Dimension uses a secret algorithm to generate beautiful new colors.



129.6630, 38.0980, 14.4020



155.8400, 59.8290, 22.5570



147.0450, 30.4900, -1.9100



80.6910, 5.3640, 1.9080



45.4200, 87.7950, 33.3550



6.9910, 13.3870, 5.1870



# Inverse Universe

The Inverse Universe completely reimagines the original color for something new.



129.6630, 38.0980, 14.4020



155.8400, 59.8290, 22.5570



137.9550, -30.4900, 1.9100



80.6910, 5.3640, 1.9080



45.4200, 87.7950, 33.3550

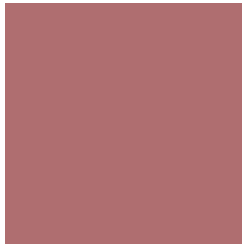


6.9910, 13.3870, 5.1870



# Previews

## White Background



This preview shows how the YIQ color 129.6630, 38.0980, 14.4020 looks on a white background.

## Color Contrast Check

Large Text (above 18pt) WCAG AA ✓ Pass

Any Text WCAG AA × Fail

Large Text (above 18pt) WCAG AAA × Fail

Any Text WCAG AAA × Fail



# Black Background



This preview shows how the YIQ color 129.6630, 38.0980, 14.4020 looks on a black background.

## Color Contrast Check

Large Text (above 18pt) WCAG AA ✓ Pass

Any Text WCAG AA ✓ Pass

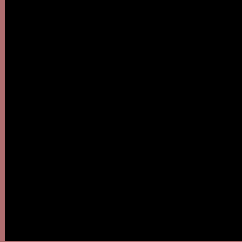
Large Text (above 18pt) WCAG AAA ✓ Pass

Any Text WCAG AAA × Fail

If you want to check with other color combinations, try the [Color Contrast Checker](#).

# YIQ 129.6630, 38.0980, 14.4020

## Background



This preview shows how black text looks on a background with the YIQ color 129.6630, 38.0980, 14.4020.



This preview shows how white text looks on a background with the YIQ color 129.6630, 38.0980,



# Color Blindness Simulation

Color vision deficiency is a very complex topic, and I could not describe the different causes any better than Wikipedia does, so if you want to learn more, you should check out their [article about color blindness](#).

## Dichromacy



### Original Color

129.6630, 38.0980, 14.4020

### Protanopia

128.3980, 4.6310, -1.3290

### Deuteranopia

128.6940, 18.4770, 1.0450



## Tritanopia

129.9450, 37.3640, 16.6920

# Trichromacy



## Original Color

129.6630, 38.0980, 14.4020

## Protanomaly

128.7310, 17.0550, 4.7910

## Deuteranomaly

128.8630, 25.4910, 6.0910

## Tritanomaly

129.7170, 38.0060, 16.0700

# Monochromacy



## Original Color

129.6630, 38.0980, 14.4020

## Achromatopsia

130.0000, -0.0000, -0.0000

## Achromatomaly

129.8770, 13.7080, 4.8760

# CSS Examples

## Text

The CSS property to change the color of the text to YIQ 129.6630, 38.0980, 14.4020 is called "color". The color property can be set on classes, ids or directly on the HTML element.

This example shows how text in the color `rgb(175, 110, 112)` looks like.

```
.text, #text, p{  
    color:rgb(175, 110, 112)  
}
```

If you want to add a text shadow in that color use the text-shadow property, you can generate a text shadow directly with our [CSS Text Shadow Generator](#).

Here you see how black text with a 4 pixel rgb(175, 110, 112) colored shadow looks like.

```
.shadow{ text-shadow: 4px 4px 2px rgb(175, 110, 112) }
```

## Border

The CSS property to change the border of an element to YIQ 129.6630, 38.0980, 14.4020 is called "border". The border property can be set on classes, ids or directly on the HTML element.

This example shows the color as border, it can be applied via the CSS property "border" or "border-color".

```
.border, #border, table{ border:4px solid rgb(175, 110, 112) }
```



If only the border color should be changed use the property `border-color`.

```
.border{ border-color:rgb(175, 110, 112) }
```

If you want to add a box shadow in that color use:

Here you see how a box with a 4 pixel `rgb(175, 110, 112)` colored shadow looks like.

```
.boxshadow{ -moz-box-shadow:4px 4px 4px  
4px rgb(175, 110, 112); -webkit-box-  
shadow:4px 4px 4px 4px rgb(175, 110, 112);  
box-shadow:4px 4px 4px 4px rgb(175, 110,  
112) }
```

# Background

The CSS property to change the background color of an element to YIQ 129.6630, 38.0980, 14.4020 is called "background". The background property can be set on classes, ids or directly on the HTML element.

```
.background, #background, body{  
background: rgb(175, 110, 112) }
```

If only the background color should be changed can be used:

```
.background{ background-color: rgb(175,  
110, 112) }
```

This example shows the color as background, it is applied via the CSS property "background".

To optimize and compress your CSS code, you can use our [online CSS compressor and optimizer](#) based on csstidy. If you want to create a linear or radial gradient as background or border, check our [CSS Gradient Generator](#).

Hey! You found this booklet interesting? Support Converting Colors with the new Membership Option!

The pro membership hides all ads, plus gives you double the colors in the color bucket, and more awesome pro features!

**[Learn more, Memberships starting at \\$2.50/m!](#)**

**Follow me  
on Twitter!**

@ConvertingColor