

Converting Colors

YIQ(129.6890, 43.2360, -1.6280)

Have a look what the booklet for
YIQ(129.6890, 43.2360, -1.6280)
contains.

YIQ(129.6890, 43.2360, -1.6280)	3
<i>Conversions</i>	4
<i>Details</i>	6
<i>Harmonies</i>	12
<i>Previews</i>	24
<i>Color Blindness Simulation</i>	28
<i>CSS Examples</i>	31

Color

**YIQ(129.6890, 43.2360,
-1.6280)**

Conversions

Conversions Part 1

Format	Color
Hex	AA774F
RGB	170, 119, 79
RGB Percent	67%, 47%, 31%
CMY	0.3332, 0.5334, 0.6900
CMYK	0.00, 0.30, 0.54, 0.33
HSL	26°, 37%, 49%
HSV	26°, 54%, 67%
XYZ	24.5903, 22.3026, 10.4158
YIQ	129.6890, 43.2360, -1.6280

Conversions

Conversions Part 2

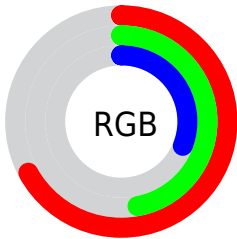
Format	Color
R_{YB}	170, 150, 79
Decimal	11171663
CIE _{Lab}	54.35, 15.38, 29.82
CIE _{LCh}	54, 33.552, 62.713
Yxy	22.3026, 0.4291, 0.3892
Android (android.graphics.Color)	4289361743 (0xFFAA774F)
YUV	129.6890, -24.9897, 35.3527
Hunter-Lab	47.2256, 10.2999, 19.9813

Details

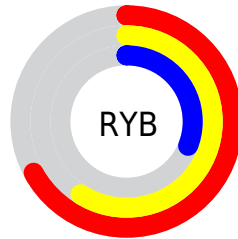
The YIQ color **129.6890, 43.2360, -1.6280** is a dark color, and the websafe version is hex **996633**. A complement of this color would be **119.3110, -43.2360, 1.6280**, and the grayscale version is **130.0000, -0.0000, -0.0000**.

A 20% lighter version of the original color is **183.2550, 47.4540, -0.9780**, and **79.2370, 38.6970, -1.9670** is the 20% darker color. If you saturate the color by 10%, you get **121.8810, 51.4430, -1.6850**, and if you desaturate by 10%, it is **137.4970, 35.0290, -1.5710**.

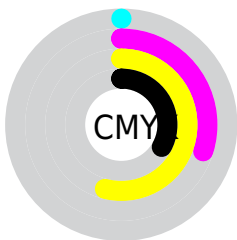
Distribution



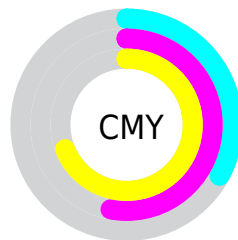
- Red (67%)
- Green (47%)
- Blue (31%)



- Red (67%)
- Yellow (59%)
- Blue (31%)



- Cyan (0%)
- Magenta (30%)
- Yellow (54%)
- Black (33%)



- Cyan (33%)
- Magenta (53%)
- Yellow (69%)

Brightness & Saturation Gradients

These gradients show how the YIQ color 129.6890, 43.2360, -1.6280 changes by changing the brightness by 10 percent. The first figure shows a shift by +10% for each color and the second figure -10%.

Similar to the brightness gradients but the following saturation gradients show a change of the YIQ color 129.6890, 43.2360, -1.6280 by changing the saturation by 10% instead.

129.6890, 43.2360,
-1.6280

129.6890, 43.2360,
-1.6280

255.0000, -0.0000,
-0.0000

104.0200, 40.8060,
-1.6420

183.2550, 47.4540,
-0.9780

79.2370, 38.6970,
-1.9670

210.7280, 47.5000,
-1.8120

55.7420, 35.7170,
-3.0270

230.2420, 31.1330,
-8.0590

34.0990, 30.3980,
-0.2420

249.8700, 14.4450,
-13.9950

13.1230, 21.8230,
6.4870

253.0620, 5.4570,
-5.2870

0.0000, 0.0000,
0.0000

■ 129.6890, 43.2360,
-1.6280

■ 129.6890, 43.2360,
-1.6280

■ 121.8810, 51.4430,
-1.6850

■ 137.4970, 35.0290,
-1.5710

■ 114.6600, 59.3750,
-2.2650

■ 144.7180, 27.0970,
-0.9910

■ 106.8520, 67.5820,
-2.3220

■ 152.5260, 18.8900,
-0.9340

■ 99.6310, 75.5140,
-2.9020

■ 159.7470, 10.9580,
-0.3540

■ 94.8550, 80.6950,
-3.1850

■ 167.5550, 2.7510,
-0.2970

■ 174.7760, -5.1810,
0.2830

■ 182.5840,
-13.3880, 0.3400

■ 189.8050,

-21.3200, 0.9200

■ 197.6130,
-29.5270, 0.9770

Harmonies

Analogous

The Analogous color harmony consists of three colors that are next to each other on the color wheel.



130.9860, 47.3140, 12.5780



129.6890, 43.2360, -1.6280



127.4710, 28.7500, -14.4340

Triad

The Triadic color harmony groups three colors that are evenly spaced from another and form a triangle on the color wheel.



129.6890, 43.2360, -1.6280



109.7310, -63.1750, -27.9990



132.0970, -9.6780, 21.2180

Complementary

The Complementary color scheme is a pair of colors which are on the opposite of each other on the color wheel.



129.6890, 43.2360, -1.6280



119.3110, -43.2360, 1.6280

Split Complementary

Split-complementary colors differ from the complementary color scheme. The scheme consists of three colors, the original color and two neighbors of the complement color.



125.8260, -43.0080, 8.5120



129.6890, 43.2360, -1.6280



102.7680, -90.9600, -25.5520

Square

The Square scheme is like the rectangle color scheme, but the four colors are evenly spaced on the color wheel.



129.6890, 43.2360, -1.6280



119.4890, -24.3870, -26.1070



110.8870, -80.5090, -11.2050



133.8740, 18.9310, 25.8670

Rectangle

The Rectangle color scheme consists of four colors that form a rectangle on the color wheel.



129.6890, 43.2360, -1.6280



125.4690, 13.8960, -20.5680



110.8870, -80.5090, -11.2050



131.0140, -19.8100, 17.6140

Sweetspot

The Sweet Spot groups the original color and five complimentary colors.



129.6890, 43.2360, -1.6280



206.1560, 17.0560, -0.7360



112.1370, 37.5440, 35.4640



102.5620, 10.0410, -0.2550



240.0000, -0.0000, -0.0000



112.0000, -0.0000, 0.0000

Same Dimension

The Same Dimension uses a secret algorithm to generate beautiful new colors.



129.6890, 43.2360, -1.6280



158.8520, 67.5820, -2.3220



156.1040, 30.8610, -25.1630



80.1530, 3.9430, 0.1270



82.4070, 70.3330, -2.6190



11.2630, 9.4450, -0.4670

Inverse Universe

The Inverse Universe completely reimagines the original color for something new.



119.3110, -43.2360, 1.6280



143.1480, -67.5820, 2.3220



92.8960, -30.8610, 25.1630



79.2600, -3.6680, 0.3960



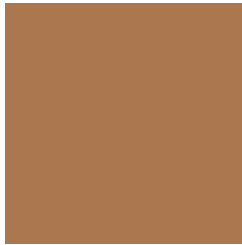
65.5930, -70.3330, 2.6190



8.7370, -9.4450, 0.4670

Previews

White Background



This preview shows how the YIQ color 129.6890, 43.2360, -1.6280 looks on a white background.

Color Contrast Check

Large Text (above 18pt) WCAG AA ✓ Pass

Any Text WCAG AA × Fail

Large Text (above 18pt) WCAG AAA × Fail

Any Text WCAG AAA × Fail

Black Background



This preview shows how the YIQ color 129.6890, 43.2360, -1.6280 looks on a black background.

Color Contrast Check

Large Text (above 18pt) WCAG AA ✓ Pass

Any Text WCAG AA ✓ Pass

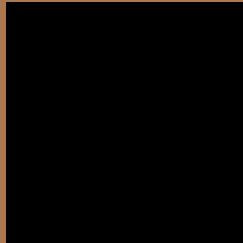
Large Text (above 18pt) WCAG AAA ✓ Pass

Any Text WCAG AAA × Fail

If you want to check with other color combinations, try the [Color Contrast Checker](#).

YIQ 129.6890, 43.2360, -1.6280

Background



This preview shows how black text looks on a background with the YIQ color 129.6890, 43.2360, -1.6280.



This preview shows how white text looks on a background with the YIQ color 129.6890, 43.2360, -1.6280.

-1.6280.

Color Blindness Simulation

Color vision deficiency is a very complex topic, and I could not describe the different causes any better than Wikipedia does, so if you want to learn more, you should check out their [article about color blindness](#).

Dichromacy



Original Color

129.6890, 43.2360, -1.6280

Protanopia

128.2300, 22.2390, -12.0730

Deuteranopia

128.9220, 35.0300, -7.0980



Tritanopia

132.5530, 32.5960, 14.9960

Trichromacy



Original Color

129.6890, 43.2360, -1.6280

Protanomaly

128.7580, 29.6200, -8.1720

Deuteranomaly

128.9440, 37.9640, -5.2040

Tritanomaly

131.6040, 36.5860, 8.7620

Monochromacy



Original Color

129.6890, 43.2360, -1.6280

Achromatopsia

130.0000, -0.0000, -0.0000

Achromatomaly

129.9710, 16.1390, -0.6370

CSS Examples

Text

The CSS property to change the color of the text to YIQ 129.6890, 43.2360, -1.6280 is called "color". The color property can be set on classes, ids or directly on the HTML element.

This example shows how text in the color `rgb(170, 119, 79)` looks like.

```
.text, #text, p{  
    color:rgb(170, 119, 79)  
}
```

If you want to add a text shadow in that color use the text-shadow property, you can generate a text shadow directly with our [CSS Text Shadow Generator](#).

Here you see how black text with a 4 pixel rgb(170, 119, 79) colored shadow looks like.

```
.shadow{ text-shadow: 4px 4px 2px rgb(170, 119, 79) }
```

Border

The CSS property to change the border of an element to YIQ 129.6890, 43.2360, -1.6280 is called "border". The border property can be set on classes, ids or directly on the HTML element.

This example shows the color as border, it can be applied via the CSS property "border" or "border-color".

```
.border, #border, table{ border:4px solid rgb(170, 119, 79) }
```


If only the border color should be changed use the property border-color.

```
.border{ border-color:rgb(170, 119, 79) }
```

If you want to add a box shadow in that color use:

Here you see how a box with a 4 pixel rgb(170, 119, 79) colored shadow looks like.

```
.boxshadow{ -moz-box-shadow:4px 4px 4px  
4px rgb(170, 119, 79); -webkit-box-  
shadow:4px 4px 4px 4px rgb(170, 119, 79);  
box-shadow:4px 4px 4px 4px rgb(170, 119,  
79) }
```

Background

The CSS property to change the background color of an element to YIQ 129.6890, 43.2360, -1.6280 is called "background". The background property can be set on classes, ids or directly on the HTML element.

```
.background, #background, body{  
background: rgb(170, 119, 79) }
```

If only the background color should be changed can be used:

```
.background{ background-color: rgb(170,  
119, 79) }
```

This example shows the color as background, it is applied via the CSS property "background".

To optimize and compress your CSS code, you can use our [online CSS compressor and optimizer](#) based on csstidy. If you want to create a linear or radial gradient as background or border, check our [CSS Gradient Generator](#).

Hey! You found this booklet interesting? Support Converting Colors with the new Membership Option!

The pro membership hides all ads, plus gives you double the colors in the color bucket, and more awesome pro features!

[Learn more, Memberships starting at \\$2.50/m!](#)

**Follow me
on Twitter!**

@ConvertingColor