

Converting Colors

YIQ(129.8700, 49.9760, -2.6320)

Have a look what the booklet for
YIQ(129.8700, 49.9760, -2.6320)
contains.

YIQ(129.8700, 49.9760, -2.6320)	3
<i>Conversions</i>	4
<i>Details</i>	6
<i>Harmonies</i>	12
<i>Previews</i>	24
<i>Color Blindness Simulation</i>	28
<i>CSS Examples</i>	31

Color

**YIQ(129.8700, 49.9760,
-2.6320)**

Conversions

Conversions Part 1

Format	Color
Hex	B07646
RGB	176, 118, 70
RGB Percent	69%, 46%, 27%
CMY	0.3097, 0.5373, 0.7252
CMYK	0.00, 0.33, 0.60, 0.31
HSL	27°, 43%, 48%
HSV	27°, 60%, 69%
XYZ	25.4937, 22.6274, 8.8282
YIQ	129.8700, 49.9760, -2.6320

Conversions

Conversions Part 2

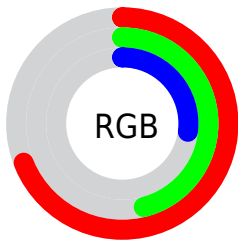
Format	Color
RYB	176, 158, 70
Decimal	11564614
CIELab	54.69, 17.77, 35.31
CIElCh	55, 39.530, 63.284
Yxy	22.6274, 0.4477, 0.3973
Android (android.graphics.Color)	4289754694 (0xFFB07646)
YUV	129.8700, -29.5159, 40.4560
Hunter-Lab	47.5682, 12.4207, 22.2942

Details

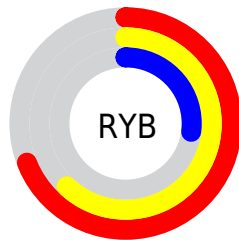
The YIQ color **129.8700, 49.9760, -2.6320** is a dark color, and the websafe version is hex **996633**. A complement of this color would be **116.1300, -49.9760, 2.6320**, and the grayscale version is **130.0000, -0.0000, -0.0000**.

A 20% lighter version of the original color is **183.4360, 54.1940, -1.9820**, and **79.1190, 44.8410, -3.1830** is the 20% darker color. If you saturate the color by 10%, you get **121.9480, 58.5040, -3.0000**, and if you desaturate by 10%, it is **137.7920, 41.4480, -2.2640**.

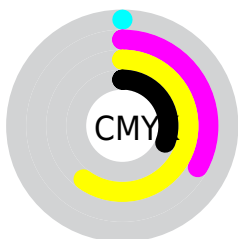
Distribution



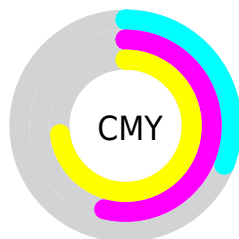
- Red (69%)
- Green (46%)
- Blue (27%)



- Red (69%)
- Yellow (62%)
- Blue (27%)



- Cyan (0%)
- Magenta (33%)
- Yellow (60%)
- Black (31%)



- Cyan (31%)
- Magenta (54%)
- Yellow (73%)

Brightness & Saturation Gradients

These gradients show how the YIQ color 129.8700, 49.9760, -2.6320 changes by changing the brightness by 10 percent. The first figure shows a shift by +10% for each color and the second figure -10%.

Similar to the brightness gradients but the following saturation gradients show a change of the YIQ color 129.8700, 49.9760, -2.6320 by changing the saturation by 10% instead.

■ 129.8700, 49.9760,
-2.6320

■ 129.8700, 49.9760,
-2.6320

■ 255.0000, -0.0000,
-0.0000

■ 104.2010, 47.5460,
-2.6460

■ 183.7350, 54.7900,
-1.7700

■ 79.1190, 44.8410,
-3.1830

■ 209.1150, 50.6640,
-4.0880

■ 55.3960, 42.5030,
-4.8650

■ 228.6290, 34.2970,
-10.3350

■ 34.4090, 32.4610,
0.9170

■ 248.1430, 17.9300,
-16.5820

■ 13.4330, 23.8860,
7.6460

■ 251.9220, 8.6670,
-8.3970

■ 0.0000, 0.0000,
0.0000

■ 129.8700, 49.9760,
-2.6320

■ 129.8700, 49.9760,
-2.6320

■ 121.9480, 58.5040,
-3.0000

■ 137.7920, 41.4480,
-2.2640

■ 114.7270, 66.4360,
-3.5800

■ 145.0130, 33.5160,
-1.6840

■ 106.8050, 74.9640,
-3.9480

■ 152.9350, 24.9880,
-1.3160

■ 99.5840, 82.8960,
-4.5280

■ 160.7430, 16.7810,
-1.2590

■ 168.0780, 8.5280,
-0.3680

■ 176.0000, -0.0000,
-0.0000

■ 183.2210, -7.9320,
0.5800

■ 191.1430,

-16.4600, 0.9480

■ 198.9510,
-24.6670, 1.0050

Harmonies

Analogous

The Analogous color harmony consists of three colors that are next to each other on the color wheel.



131.3460, 55.1080, 14.5000



129.8700, 49.9760, -2.6320



127.5160, 32.8770, -17.6430

Triad

The Triadic color harmony groups three colors that are evenly spaced from another and form a triangle on the color wheel.



129.8700, 49.9760, -2.6320



102.1520, -83.7140, -35.7300



133.4330, -10.5040, 25.1760

Complementary

The Complementary color scheme is a pair of colors which are on the opposite of each other on the color wheel.



129.8700, 49.9760, -2.6320



116.1300, -49.9760, 2.6320

Split Complementary

Split-complementary colors differ from the complementary color scheme. The scheme consists of three colors, the original color and two neighbors of the complement color.



124.6770, -52.7740, 9.2900



129.8700, 49.9760, -2.6320



105.3270, -94.0320, -24.9440

Square

The Square scheme is like the rectangle color scheme, but the four colors are evenly spaced on the color wheel.



129.8700, 49.9760, -2.6320



117.3200, -31.4010, -31.1530



105.1280, -100.3610, -14.8650



134.4880, 23.1940, 31.2100

Rectangle

The Rectangle color scheme consists of four colors that form a rectangle on the color wheel.



129.8700, 49.9760, -2.6320



125.3180, 15.6390, -24.6250



105.1280, -100.3610, -14.8650



131.9690, -23.9370, 20.8230

Sweetspot

The Sweet Spot groups the original color and five complimentary colors.



129.8700, 49.9760, -2.6320



211.7110, 19.8070, -1.0330



108.3060, 44.5580, 40.5100



103.9320, 11.8750, -0.4530



242.0000, -0.0000, 0.0000



115.0000, -0.0000, 0.0000

Same Dimension

The Same Dimension uses a secret algorithm to generate beautiful new colors.



129.8700, 49.9760, -2.6320



157.6590, 78.3110, -4.0330



160.9810, 35.4010, -30.3510



85.0390, 4.2640, -0.1840



86.2500, 72.2130, -3.6510



14.8180, 12.1960, -0.7640

Inverse Universe

The Inverse Universe completely reimagines the original color for something new.



116.1300, -49.9760, 2.6320



136.3410, -78.3110, 4.0330



85.0190, -35.4010, 30.3510



83.9610, -4.2640, 0.1840



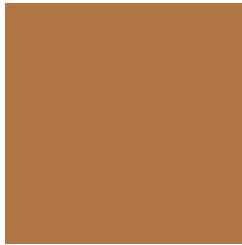
66.7500, -72.2130, 3.6510



11.1820, -12.1960, 0.7640

Previews

White Background



This preview shows how the YIQ color 129.8700, 49.9760, -2.6320 looks on a white background.

Color Contrast Check

Large Text (above 18pt) WCAG AA ✓ Pass

Any Text WCAG AA × Fail

Large Text (above 18pt) WCAG AAA × Fail

Any Text WCAG AAA × Fail

Black Background



This preview shows how the YIQ color 129.8700, 49.9760, -2.6320 looks on a black background.

Color Contrast Check

Large Text (above 18pt) WCAG AA ✓ Pass

Any Text WCAG AA ✓ Pass

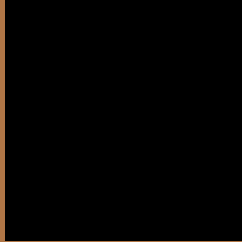
Large Text (above 18pt) WCAG AAA ✓ Pass

Any Text WCAG AAA × Fail

If you want to check with other color combinations, try the [Color Contrast Checker](#).

YIQ 129.8700, 49.9760, -2.6320

Background



This preview shows how black text looks on a background with the YIQ color 129.8700, 49.9760, -2.6320.



This preview shows how white text looks on a background with the YIQ color 129.8700, 49.9760,

-2.6320.

Color Blindness Simulation

Color vision deficiency is a very complex topic, and I could not describe the different causes any better than Wikipedia does, so if you want to learn more, you should check out their [article about color blindness](#).

Dichromacy



Original Color

129.8700, 49.9760, -2.6320

Protanopia

128.5030, 25.7240, -14.6600

Deuteranopia

129.2660, 39.7530, -10.0950



Tritanopia

133.2440, 37.9600, 16.9040

Trichromacy



Original Color

129.8700, 49.9760, -2.6320

Protanomaly

128.9280, 34.8930, -10.1230

Deuteranomaly

129.1140, 43.2370, -7.1550

Tritanomaly

132.0670, 42.5920, 10.0480

Monochromacy



Original Color

129.8700, 49.9760, -2.6320

Achromatopsia

130.0000, -0.0000, -0.0000

Achromatomaly

130.2270, 18.2940, -1.1460

CSS Examples

Text

The CSS property to change the color of the text to YIQ 129.8700, 49.9760, -2.6320 is called "color". The color property can be set on classes, ids or directly on the HTML element.

This example shows how text in the color `rgb(176, 118, 70)` looks like.

```
.text, #text, p{  
    color:rgb(176, 118, 70)  
}
```

If you want to add a text shadow in that color use the text-shadow property, you can generate a text shadow directly with our [CSS Text Shadow Generator](#).

Here you see how black text with a 4 pixel rgb(176, 118, 70) colored shadow looks like.

```
.shadow{ text-shadow: 4px 4px 2px rgb(176, 118, 70) }
```

Border

The CSS property to change the border of an element to YIQ 129.8700, 49.9760, -2.6320 is called "border". The border property can be set on classes, ids or directly on the HTML element.

This example shows the color as border, it can be applied via the CSS property "border" or "border-color".

```
.border, #border, table{ border:4px solid rgb(176, 118, 70) }
```


If only the border color should be changed use the property `border-color`.

```
.border{ border-color:rgb(176, 118, 70) }
```

If you want to add a box shadow in that color use:

Here you see how a box with a 4 pixel `rgb(176, 118, 70)` colored shadow looks like.

```
.boxshadow{ -moz-box-shadow:4px 4px 4px  
4px rgb(176, 118, 70); -webkit-box-  
shadow:4px 4px 4px 4px rgb(176, 118, 70);  
box-shadow:4px 4px 4px 4px rgb(176, 118,  
70) }
```

Background

The CSS property to change the background color of an element to YIQ 129.8700, 49.9760, -2.6320 is called "background". The background property can be set on classes, ids or directly on the HTML element.

```
.background, #background, body{  
background: rgb(176, 118, 70) }
```

If only the background color should be changed can be used:

```
.background{ background-color: rgb(176,  
118, 70) }
```

This example shows the color as background, it is applied via the CSS property "background".

To optimize and compress your CSS code, you can use our [online CSS compressor and optimizer](#) based on csstidy. If you want to create a linear or radial gradient as background or border, check our [CSS Gradient Generator](#).

Hey! You found this booklet interesting? Support Converting Colors with the new Membership Option!

The pro membership hides all ads, plus gives you double the colors in the color bucket, and more awesome pro features!

[Learn more, Memberships starting at \\$2.50/m!](#)

**Follow me
on Twitter!**

@ConvertingColor