

Converting Colors

YIQ(130.1820, 49.6980, 13.4260)

Have a look what the booklet for
YIQ(130.1820, 49.6980, 13.4260)
contains.

YIQ(130.1820, 49.6980, 13.4260)	3
<i>Conversions</i>	4
<i>Details</i>	6
<i>Harmonies</i>	12
<i>Previews</i>	24
<i>Color Blindness Simulation</i>	28
<i>CSS Examples</i>	31

Color

**YIQ(130.1820, 49.6980,
13.4260)**

Conversions

Conversions Part 1

Format	Color
Hex	BA6C62
RGB	186, 108, 98
RGB Percent	73%, 42%, 38%
CMY	0.2704, 0.5766, 0.6155
CMYK	0.00, 0.42, 0.47, 0.27
HSL	7°, 39%, 56%
HSV	7°, 47%, 73%
XYZ	27.8270, 22.0459, 14.3569
YIQ	130.1820, 49.6980, 13.4260

Conversions

Conversions Part 2

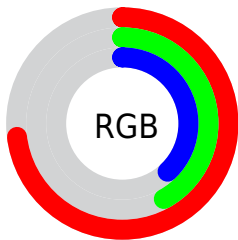
Format	Color
R_{YB}	186, 109, 98
Decimal	12217442
CIE Lab	54.08, 29.96, 19.02
CIE LCh	54, 35.486, 32.419
Yxy	22.0459, 0.4332, 0.3432
Android (android.graphics.Color)	4290407522 (0xFFBA6C62)
YUV	130.1820, -15.8657, 48.9524
Hunter-Lab	46.9530, 23.6213, 14.7380

Details

The YIQ color **130.1820, 49.6980, 13.4260** is a dark color, and the websafe version is hex **CC6666**. A complement of this color would be **153.8180, -49.6980, -13.4260**, and the grayscale version is **130.0000, -0.0000, -0.0000**.

A 20% lighter version of the original color is **184.1610, 54.1910, 14.5990**, and **79.3170, 44.8840, 12.5640** is the 20% darker color. If you saturate the color by 10%, you get **118.0370, 60.4720, 16.4080**, and if you desaturate by 10%, it is **141.7400, 39.1990, 10.9670**.

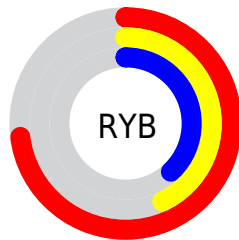
Distribution



Red (73%)

Green (42%)

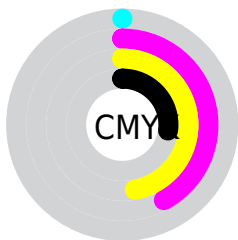
Blue (38%)



Red (73%)

Yellow (43%)

Blue (38%)

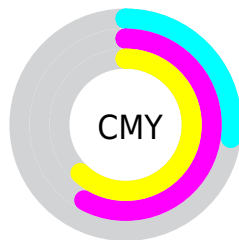


Cyan (0%)

Magenta (42%)

Yellow (47%)

Black (27%)



Cyan (27%)

Magenta (58%)

Yellow (62%)

Brightness & Saturation Gradients

These gradients show how the YIQ color 130.1820, 49.6980, 13.4260 changes by changing the brightness by 10 percent. The first figure shows a shift by +10% for each color and the second figure -10%.

Similar to the brightness gradients but the following saturation gradients show a change of the YIQ color 130.1820, 49.6980, 13.4260 by changing the saturation by 10% instead.

■ 130.1820, 49.6980,
13.4260

■ 130.1820, 49.6980,
13.4260

■ 255.0000, -0.0000,
-0.0000

■ 104.3990, 47.5890,
13.1010

■ 184.1610, 54.1910,
14.5990

■ 79.4310, 44.5630,
12.8750

■ 206.5510, 44.1050,
10.1610

■ 54.4630, 41.5370,
12.6490

■ 226.1790, 27.4170,
4.2250

■ 29.3920, 40.2990,
13.0590

■ 245.8070, 10.7290,
-1.7110

■ 14.9500, 29.8000,
10.6000

■ 3.2890, 6.5560,
2.3320

■ 0.0000, 0.0000,

0.0000

■ 130.1820, 49.6980,
13.4260

■ 130.1820, 49.6980,
13.4260

■ 118.0370, 60.4720,
16.4080

■ 141.7400, 39.1990,
10.9670

■ 106.5930, 70.6500,
19.1780

■ 153.7710, 28.7460,
7.6740

■ 94.4480, 81.4240,
22.1600

■ 165.3290, 18.2470,
5.2150

■ 83.0040, 91.6020,
24.9300

■ 177.3600, 7.7940,
1.9220

■ 70.8590, 102.3760,
27.9120

■ 189.5050, -2.9800,
-1.0600

■ 67.9410, 105.0810,
28.4490

■ 201.0630,
-13.4790, -3.5190

■ 213.0940,
-23.9320, -6.8120

■ 224.6520,
-34.4310, -9.2710

■ 234.3690,
-41.1240, -14.6280

Harmonies

Analogous

The Analogous color harmony consists of three colors that are next to each other on the color wheel.



131.8410, 40.8930, 24.3250



130.1820, 49.6980, 13.4260



129.0590, 45.0700, -1.8260

Triad

The Triadic color harmony groups three colors that are evenly spaced from another and form a triangle on the color wheel.



130.1820, 49.6980, 13.4260



118.0650, -26.1290, -27.5770



124.5590, -46.6300, 8.0740

Complementary

The Complementary color scheme is a pair of colors which are on the opposite of each other on the color wheel.



130.1820, 49.6980, 13.4260



153.8180, -49.6980, -13.4260

Split Complementary

Split-complementary colors differ from the complementary color scheme. The scheme consists of three colors, the original color and two neighbors of the complement color.



103.0420, -97.2430, -16.3070



130.1820, 49.6980, 13.4260



103.6370, -74.7740, -32.5500

Square

The Square scheme is like the rectangle color scheme, but the four colors are evenly spaced on the color wheel.



130.1820, 49.6980, 13.4260



123.1690, 5.8730, -23.8470



102.8820, -91.2810, -25.2410



131.4390, -10.6410, 22.1510

Rectangle

The Rectangle color scheme consists of four colors that form a rectangle on the color wheel.



130.1820, 49.6980, 13.4260



127.4720, 36.1770, -11.3670



102.8820, -91.2810, -25.2410



120.0410, -59.9710, 2.0530

Sweetspot

The Sweet Spot groups the original color and five complimentary colors.



130.1820, 49.6980, 13.4260



220.5140, 19.1640, 5.1160



133.3180, 27.0890, 43.2250



109.1540, 11.3700, 3.1940



250.0000, 0.0000, 0.0000



122.0000, 0.0000, -0.0000

Same Dimension

The Same Dimension uses a secret algorithm to generate beautiful new colors.



130.1820, 49.6980, 13.4260



154.6540, 77.8480, 20.8880



155.4230, 37.8730, -9.0630



86.2780, 5.0890, 1.3850



57.2100, 88.0260, 23.6580



10.1330, 15.8630, 4.3670

Inverse Universe

The Inverse Universe completely reimagines the original color for something new.



153.8180, -49.6980, -13.4260



191.9330, -78.1230, -21.4110



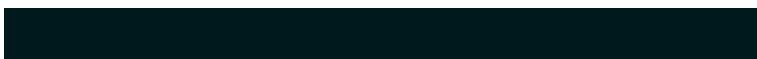
128.5770, -37.8730, 9.0630



88.7220, -5.0890, -1.3850



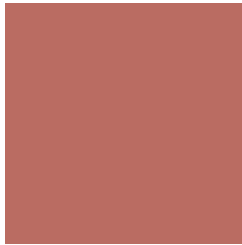
98.7900, -88.0260, -23.6580



17.8670, -15.8630, -4.3670

Previews

White Background



This preview shows how the YIQ color 130.1820, 49.6980, 13.4260 looks on a white background.

Color Contrast Check

Large Text (above 18pt) WCAG AA ✓ Pass

Any Text WCAG AA × Fail

Large Text (above 18pt) WCAG AAA × Fail

Any Text WCAG AAA × Fail

Black Background



This preview shows how the YIQ color 130.1820, 49.6980, 13.4260 looks on a black background.

Color Contrast Check

Large Text (above 18pt) WCAG AA ✓ Pass

Any Text WCAG AA ✓ Pass

Large Text (above 18pt) WCAG AAA ✓ Pass

Any Text WCAG AAA × Fail

If you want to check with other color combinations, try the [Color Contrast Checker](#).

YIQ 130.1820, 49.6980, 13.4260

Background



This preview shows how black text looks on a background with the YIQ color 130.1820, 49.6980, 13.4260.



This preview shows how white text looks on a background with the YIQ color 130.1820, 49.6980,

13.4260.

Color Blindness Simulation

Color vision deficiency is a very complex topic, and I could not describe the different causes any better than Wikipedia does, so if you want to learn more, you should check out their [article about color blindness](#).

Dichromacy



Original Color

130.1820, 49.6980, 13.4260

Protanopia

128.9980, 11.5090, -4.8350

Deuteranopia

129.6640, 27.1890, -2.6590



Tritanopia

131.0170, 46.0290, 19.3490

Trichromacy



Original Color

130.1820, 49.6980, 13.4260

Protanomaly

129.2280, 25.7210, 1.9210

Deuteranomaly

129.8440, 35.6700, 3.3340

Tritanomaly

131.0340, 47.3590, 17.2710

Monochromacy



Original Color

130.1820, 49.6980, 13.4260

Achromatopsia

130.0000, -0.0000, -0.0000

Achromatomaly

129.9160, 17.9720, 4.6920

CSS Examples

Text

The CSS property to change the color of the text to YIQ 130.1820, 49.6980, 13.4260 is called "color". The color property can be set on classes, ids or directly on the HTML element.

This example shows how text in the color `rgb(186, 108, 98)` looks like.

```
.text, #text, p{  
    color:rgb(186, 108, 98)  
}
```

If you want to add a text shadow in that color use the text-shadow property, you can generate a text shadow directly with our [CSS Text Shadow Generator](#).

Here you see how black text with a 4 pixel rgb(186, 108, 98) colored shadow looks like.

```
.shadow{ text-shadow: 4px 4px 2px rgb(186, 108, 98) }
```

Border

The CSS property to change the border of an element to YIQ 130.1820, 49.6980, 13.4260 is called "border". The border property can be set on classes, ids or directly on the HTML element.

This example shows the color as border, it can be applied via the CSS property "border" or "border-color".

```
.border, #border, table{ border:4px solid rgb(186, 108, 98) }
```


If only the border color should be changed use the property border-color.

```
.border{ border-color:rgb(186, 108, 98) }
```

If you want to add a box shadow in that color use:

Here you see how a box with a 4 pixel rgb(186, 108, 98) colored shadow looks like.

```
.boxshadow{ -moz-box-shadow:4px 4px 4px  
4px rgb(186, 108, 98); -webkit-box-  
shadow:4px 4px 4px 4px rgb(186, 108, 98);  
box-shadow:4px 4px 4px 4px rgb(186, 108,  
98) }
```

Background

The CSS property to change the background color of an element to YIQ 130.1820, 49.6980, 13.4260 is called "background". The background property can be set on classes, ids or directly on the HTML element.

```
.background, #background, body{  
background: rgb(186, 108, 98) }
```

If only the background color should be changed can be used:

```
.background{ background-color: rgb(186,  
108, 98) }
```

This example shows the color as background, it is applied via the CSS property "background".

To optimize and compress your CSS code, you can use our [online CSS compressor and optimizer](#) based on csstidy. If you want to create a linear or radial gradient as background or border, check our [CSS Gradient Generator](#).

Hey! You found this booklet interesting? Support Converting Colors with the new Membership Option!

The pro membership hides all ads, plus gives you double the colors in the color bucket, and more awesome pro features!

[Learn more, Memberships starting at \\$2.50/m!](#)

**Follow me
on Twitter!**

@ConvertingColor