

Converting Colors

YIQ(130.4510, 23.4750, -1.4290)

Have a look what the booklet for
YIQ(130.4510, 23.4750, -1.4290)
contains.

YIQ(130.4510, 23.4750, -1.4290)	3
<i>Conversions</i>	4
<i>Details</i>	6
<i>Harmonies</i>	12
<i>Previews</i>	24
<i>Color Blindness Simulation</i>	28
<i>CSS Examples</i>	31

Color

**YIQ(130.4510, 23.4750,
-1.4290)**

Conversions

Conversions Part 1

Format	Color
Hex	987D66
RGB	152, 125, 102
RGB Percent	60%, 49%, 40%
CMY	0.4039, 0.5098, 0.5999
CMYK	0.00, 0.18, 0.33, 0.40
HSL	28°, 20%, 50%
HSV	28°, 33%, 60%
XYZ	22.6831, 22.3008, 15.6867
YIQ	130.4510, 23.4750, -1.4290

Conversions

Conversions Part 2

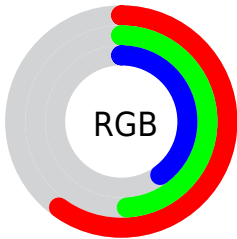
Format	Color
R_{YB}	152, 145, 102
Decimal	9993574
CIE _{Lab}	54.34, 6.93, 16.44
CIE _{LCh}	54, 17.839, 67.140
Yxy	22.3008, 0.3739, 0.3676
Android (android.graphics.Color)	4288183654 (0xFF987D66)
YUV	130.4510, -14.0263, 18.8985
Hunter-Lab	47.2238, 3.0978, 13.3618

Details

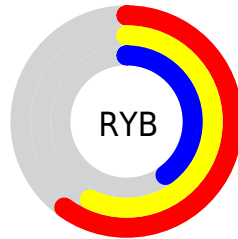
The YIQ color $130.4510, 23.4750, -1.4290$ is a dark color, and the websafe version is hex 996666 . A complement of this color would be $123.5490, -23.4750, 1.4290$, and the grayscale version is $131.0000, -0.0000, -0.0000$.

A 20% lighter version of the original color is $183.8210, 25.3090, -1.6270$, and $80.7820, 21.0450, -1.4430$ is the 20% darker color. If you saturate the color by 10%, you get $124.0450, 30.4900, -1.9100$, and if you desaturate by 10%, it is $136.8570, 16.4600, -0.9480$.

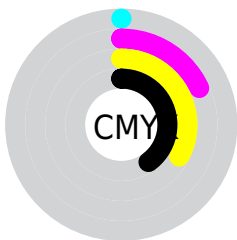
Distribution



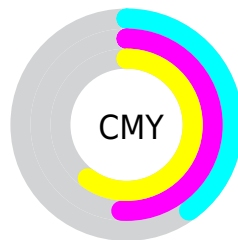
- Red (60%)
- Green (49%)
- Blue (40%)



- Red (60%)
- Yellow (57%)
- Blue (40%)



- Cyan (0%)
- Magenta (18%)
- Yellow (33%)
- Black (40%)



- Cyan (40%)
- Magenta (51%)
- Yellow (60%)

Brightness & Saturation Gradients

These gradients show how the YIQ color 130.4510, 23.4750, -1.4290 changes by changing the brightness by 10 percent. The first figure shows a shift by +10% for each color and the second figure -10%.

Similar to the brightness gradients but the following saturation gradients show a change of the YIQ color 130.4510, 23.4750, -1.4290 by changing the saturation by 10% instead.

■ 130.4510, 23.4750,
-1.4290

■ 130.4510, 23.4750,
-1.4290

■ 255.0000, -0.0000,
-0.0000

■ 105.2660, 22.5580,
-1.3300

■ 183.8210, 25.3090,
-1.6270

■ 80.7820, 21.0450,
-1.4430

■ 211.4190, 26.5010,
-1.2030

■ 57.2980, 19.5320,
-1.5560

■ 236.7280, 21.1370,
-3.1110

■ 35.7000, 18.3400,
-1.9800

■ 252.8340, 6.0990,
-5.9090

■ 14.8400, 15.1300,
1.1300

■ 0.0000, 0.0000,
0.0000

■ 130.4510, 23.4750,
-1.4290

■ 130.4510, 23.4750,
-1.4290

■ 124.0450, 30.4900,
-1.9100

■ 136.8570, 16.4600,
-0.9480

■ 117.6390, 37.5050,
-2.3910

■ 143.2630, 9.4450,
-0.4670

■ 110.5320, 45.1160,
-2.6600

■ 150.3700, 1.8340,
-0.1980

■ 104.1260, 52.1310,
-3.1410

■ 156.7760, -5.1810,
0.2830

■ 97.7200, 59.1460,
-3.6220

■ 163.1820,
-12.1960, 0.7640

■ 91.3140, 66.1610,
-4.1030

■ 169.5880,
-19.2110, 1.2450

■ 86.5380, 71.3420,
-4.3860

■ 176.5810,
-26.5010, 1.2030

■ 183.1010,

-33.8370, 1.9950

■ 189.5070,
-40.8520, 2.4760

Harmonies

Analogous

The Analogous color harmony consists of three colors that are next to each other on the color wheel.



131.6350, 26.1330, 5.4690



130.4510, 23.4750, -1.4290



128.8580, 14.7190, -7.9450

Triad

The Triadic color harmony groups three colors that are evenly spaced from another and form a triangle on the color wheel.



130.4510, 23.4750, -1.4290



123.6650, -27.2780, -12.2540



132.0080, -2.4780, 11.8740

Complementary

The Complementary color scheme is a pair of colors which are on the opposite of each other on the color wheel.



130.4510, 23.4750, -1.4290



123.5490, -23.4750, 1.4290

Split Complementary

Split-complementary colors differ from the complementary color scheme. The scheme consists of three colors, the original color and two neighbors of the complement color.



129.5330, -17.3780, 6.5740



130.4510, 23.4750, -1.4290



123.8910, -33.6060, -7.7020

Square

The Square scheme is like the rectangle color scheme, but the four colors are evenly spaced on the color wheel.



130.4510, 23.4750, -1.4290



125.2550, -14.4400, -13.6400



126.2600, -30.0310, -0.9030



132.9620, 12.3310, 13.3150

Rectangle

The Rectangle color scheme consists of four colors that form a rectangle on the color wheel.



130.4510, 23.4750, -1.4290



127.6720, 6.3750, -10.9130



126.2600, -30.0310, -0.9030



131.6160, -7.2460, 10.1780

Sweetspot

The Sweet Spot groups the original color and five complimentary colors.



130.4510, 23.4750, -1.4290



187.9640, 8.8490, -0.6790



120.1420, 20.8120, 19.3080



94.2240, 5.1810, -0.2830



227.0000, -0.0000, -0.0000



99.0000, -0.0000, 0.0000

Same Dimension

The Same Dimension uses a secret algorithm to generate beautiful new colors.



130.4510, 23.4750, -1.4290



163.2690, 35.6710, -2.1930



145.1260, 16.6000, -14.5040



73.1530, 3.9430, 0.1270



79.4280, 65.8400, -3.7920



7.4090, 6.0980, -0.3820

Inverse Universe

The Inverse Universe completely reimagines the original color for something new.



123.5490, -23.4750, 1.4290



152.7310, -35.6710, 2.1930



109.4610, -16.8750, 13.9810



72.2600, -3.6680, 0.3960



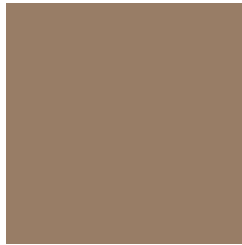
60.5720, -65.8400, 3.7920



5.5910, -6.0980, 0.3820

Previews

White Background



This preview shows how the YIQ color 130.4510, 23.4750, -1.4290 looks on a white background.

Color Contrast Check

Large Text (above 18pt) WCAG AA ✓ Pass

Any Text WCAG AA × Fail

Large Text (above 18pt) WCAG AAA × Fail

Any Text WCAG AAA × Fail

Black Background



This preview shows how the YIQ color 130.4510, 23.4750, -1.4290 looks on a black background.

Color Contrast Check

Large Text (above 18pt) WCAG AA ✓ Pass

Any Text WCAG AA ✓ Pass

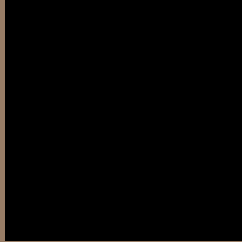
Large Text (above 18pt) WCAG AAA ✓ Pass

Any Text WCAG AAA × Fail

If you want to check with other color combinations, try the [Color Contrast Checker](#).

YIQ 130.4510, 23.4750, -1.4290

Background



This preview shows how black text looks on a background with the YIQ color 130.4510, 23.4750, -1.4290.



This preview shows how white text looks on a background with the YIQ color 130.4510, 23.4750,

-1.4290.

Color Blindness Simulation

Color vision deficiency is a very complex topic, and I could not describe the different causes any better than Wikipedia does, so if you want to learn more, you should check out their [article about color blindness](#).

Dichromacy



Original Color

130.4510, 23.4750, -1.4290

Protanopia

129.4280, 13.1140, -6.3900

Deuteranopia

130.4510, 23.4750, -1.4290



Tritanopia

132.1920, 17.3750, 10.0070

Trichromacy



Original Color

130.4510, 23.4750, -1.4290

Protanomaly

129.6350, 16.9650, -4.5950

Deuteranomaly

130.4510, 23.4750, -1.4290

Tritanomaly

131.3400, 19.7140, 6.1620

Monochromacy



Original Color

130.4510, 23.4750, -1.4290

Achromatopsia

130.0000, -0.0000, -0.0000

Achromatomaly

130.0780, 8.5280, -0.3680

CSS Examples

Text

The CSS property to change the color of the text to YIQ 130.4510, 23.4750, -1.4290 is called "color". The color property can be set on classes, ids or directly on the HTML element.

This example shows how text in the color `rgb(152, 125, 102)` looks like.

```
.text, #text, p{  
    color:rgb(152, 125, 102)  
}
```

If you want to add a text shadow in that color use the text-shadow property, you can generate a text shadow directly with our [CSS Text Shadow Generator](#).

Here you see how black text with a 4 pixel rgb(152, 125, 102) colored shadow looks like.

```
.shadow{ text-shadow: 4px 4px 2px rgb(152, 125, 102) }
```

Border

The CSS property to change the border of an element to YIQ 130.4510, 23.4750, -1.4290 is called "border". The border property can be set on classes, ids or directly on the HTML element.

This example shows the color as border, it can be applied via the CSS property "border" or "border-color".

```
.border, #border, table{ border:4px solid rgb(152, 125, 102) }
```


If only the border color should be changed use the property `border-color`.

```
.border{ border-color:rgb(152, 125, 102) }
```

If you want to add a box shadow in that color use:

Here you see how a box with a 4 pixel `rgb(152, 125, 102)` colored shadow looks like.

```
.boxshadow{ -moz-box-shadow:4px 4px 4px  
4px rgb(152, 125, 102); -webkit-box-  
shadow:4px 4px 4px 4px rgb(152, 125, 102);  
box-shadow:4px 4px 4px 4px rgb(152, 125,  
102) }
```

Background

The CSS property to change the background color of an element to YIQ 130.4510, 23.4750, -1.4290 is called "background". The background property can be set on classes, ids or directly on the HTML element.

```
.background, #background, body{  
background: rgb(152, 125, 102) }
```

If only the background color should be changed can be used:

```
.background{ background-color: rgb(152,  
125, 102) }
```

This example shows the color as background, it is applied via the CSS property "background".

To optimize and compress your CSS code, you can use our [online CSS compressor and optimizer](#) based on csstidy. If you want to create a linear or radial gradient as background or border, check our [CSS Gradient Generator](#).

Hey! You found this booklet interesting? Support Converting Colors with the new Membership Option!

The pro membership hides all ads, plus gives you double the colors in the color bucket, and more awesome pro features!

[Learn more, Memberships starting at \\$2.50/m!](#)

**Follow me
on Twitter!**

@ConvertingColor