

Converting Colors

YIQ(131.2340, 25.5840, -1.1040)

Have a look what the booklet for
YIQ(131.2340, 25.5840, -1.1040)
contains.

YIQ(131.2340, 25.5840, -1.1040)	3
<i>Conversions</i>	4
<i>Details</i>	6
<i>Harmonies</i>	12
<i>Previews</i>	24
<i>Color Blindness Simulation</i>	28
<i>CSS Examples</i>	31

Color

**YIQ(131.2340, 25.5840,
-1.1040)**

Conversions

Conversions Part 1

Format	Color
Hex	9B7D65
RGB	155, 125, 101
RGB Percent	61%, 49%, 40%
CMY	0.3921, 0.5098, 0.6038
CMYK	0.00, 0.19, 0.35, 0.39
HSL	27°, 21%, 50%
HSV	27°, 35%, 61%
XYZ	23.2028, 22.5742, 15.4541
YIQ	131.2340, 25.5840, -1.1040

Conversions

Conversions Part 2

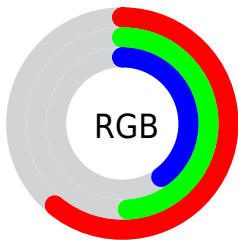
Format	Color
R_{YB}	155, 144, 101
Decimal	10190181
CIE _{Lab}	54.63, 8.05, 17.45
CIE _{LCh}	55, 19.218, 65.246
Yxy	22.5742, 0.3789, 0.3687
Android (android.graphics.Color)	4288380261 (0xFF9B7D65)
YUV	131.2340, -14.9054, 20.8428
Hunter-Lab	47.5123, 4.0246, 13.9736

Details

The YIQ color **131.2340, 25.5840, -1.1040** is a dark color, and the websafe version is hex **996666**. A complement of this color would be **124.7660, -25.5840, 1.1040**, and the grayscale version is **131.0000, -0.0000, -0.0000**.

A 20% lighter version of the original color is **184.6040, 27.4180, -1.3020**, and **81.5650, 23.1540, -1.1180** is the 20% darker color. If you saturate the color by 10%, you get **124.2410, 32.8740, -1.0620**, and if you desaturate by 10%, it is **138.3410, 17.9730, -0.8350**.

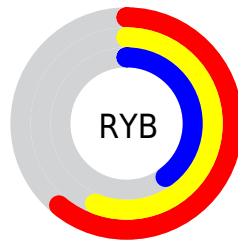
Distribution



Red (61%)

Green (49%)

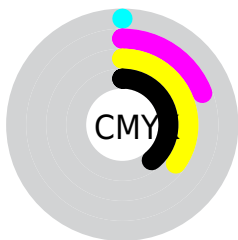
Blue (40%)



Red (61%)

Yellow (56%)

Blue (40%)

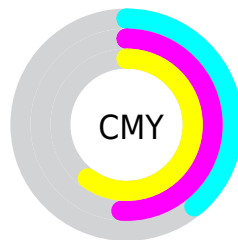


Cyan (0%)

Magenta (19%)

Yellow (35%)

Black (39%)



Cyan (39%)

Magenta (51%)

Yellow (60%)

Brightness & Saturation Gradients

These gradients show how the YIQ color 131.2340, 25.5840, -1.1040 changes by changing the brightness by 10 percent. The first figure shows a shift by +10% for each color and the second figure -10%.

Similar to the brightness gradients but the following saturation gradients show a change of the YIQ color 131.2340, 25.5840, -1.1040 by changing the saturation by 10% instead.

■ 131.2340, 25.5840,
-1.1040

■ 131.2340, 25.5840,
-1.1040

■ 255.0000, -0.0000,
-0.0000

■ 105.7500, 24.0710,
-1.2170

■ 184.6040, 27.4180,
-1.3020

■ 81.5650, 23.1540,
-1.1180

■ 212.2020, 28.6100,
-0.8780

■ 58.0810, 21.6410,
-1.2310

■ 236.5000, 21.7790,
-3.7330

■ 36.0700, 20.1740,
-2.1780

■ 252.7200, 6.4200,
-6.2200

■ 15.4380, 16.3220,
1.5540

■ 0.0000, 0.0000,
0.0000

■ 131.2340, 25.5840,
-1.1040

■ 131.2340, 25.5840,
-1.1040

■ 124.2410, 32.8740,
-1.0620

■ 138.3410, 17.9730,
-0.8350

■ 117.7210, 40.2100,
-1.8540

■ 144.7470, 10.9580,
-0.3540

■ 110.7280, 47.5000,
-1.8120

■ 151.8540, 3.3470,
-0.0850

■ 104.2080, 54.8360,
-2.6040

■ 158.2600, -3.6680,
0.3960

■ 97.2150, 62.1260,
-2.5620

■ 165.3670,
-11.2790, 0.6650

■ 90.1080, 69.7370,
-2.8310

■ 172.3600,
-18.5690, 0.6230

■ 86.8480, 73.4050,
-3.2270

■ 178.8800,
-25.9050, 1.4150

■ 185.8730,

-33.1950, 1.3730

■ 192.9800,
-40.8060, 1.6420

Harmonies

Analogous

The Analogous color harmony consists of three colors that are next to each other on the color wheel.



132.2440, 28.7920, 6.8400



131.2340, 25.5840, -1.1040



129.9290, 15.9570, -8.3550

Triad

The Triadic color harmony groups three colors that are evenly spaced from another and form a triangle on the color wheel.



131.2340, 25.5840, -1.1040



123.6540, -28.7450, -13.2010



132.3500, -3.4410, 12.8070

Complementary

The Complementary color scheme is a pair of colors which are on the opposite of each other on the color wheel.



131.2340, 25.5840, -1.1040



124.7660, -25.5840, 1.1040

Split Complementary

Split-complementary colors differ from the complementary color scheme. The scheme consists of three colors, the original color and two neighbors of the complement color.



129.8640, -19.8080, 6.5600



131.2340, 25.5840, -1.1040



123.3960, -36.5860, -8.7620

Square

The Square scheme is like the rectangle color scheme, but the four colors are evenly spaced on the color wheel.



131.2340, 25.5840, -1.1040



125.6140, -14.0730, -14.7850



126.1780, -32.7360, -1.4400



133.9020, 12.5600, 14.6720

Rectangle

The Rectangle color scheme consists of four colors that form a rectangle on the color wheel.



131.2340, 25.5840, -1.1040



128.3300, 7.3380, -11.8460



126.1780, -32.7360, -1.4400



131.7730, -9.1260, 11.2100

Sweetspot

The Sweet Spot groups the original color and five complimentary colors.



131.2340, 25.5840, -1.1040



192.2630, 9.4450, -0.4670



120.6800, 22.2330, 21.0890



96.5230, 5.7770, -0.0710



230.0000, -0.0000, 0.0000



102.0000, -0.0000, -0.0000

Same Dimension

The Same Dimension uses a secret algorithm to generate beautiful new colors.



131.2340, 25.5840, -1.1040



163.8350, 39.8890, -1.5430



146.4960, 18.4340, -14.7020



73.1530, 3.9430, 0.1270



78.2540, 66.3900, -2.7460



7.4090, 6.0980, -0.3820

Inverse Universe

The Inverse Universe completely reimagines the original color for something new.



124.7660, -25.5840, 1.1040



154.1650, -39.8890, 1.5430



109.5040, -18.4340, 14.7020



72.2600, -3.6680, 0.3960



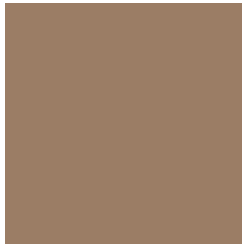
61.7460, -66.3900, 2.7460



5.5910, -6.0980, 0.3820

Previews

White Background



This preview shows how the YIQ color 131.2340, 25.5840, -1.1040 looks on a white background.

Color Contrast Check

Large Text (above 18pt) WCAG AA ✓ Pass

Any Text WCAG AA × Fail

Large Text (above 18pt) WCAG AAA × Fail

Any Text WCAG AAA × Fail

Black Background



This preview shows how the YIQ color 131.2340, 25.5840, -1.1040 looks on a black background.

Color Contrast Check

Large Text (above 18pt) WCAG AA ✓ Pass

Any Text WCAG AA ✓ Pass

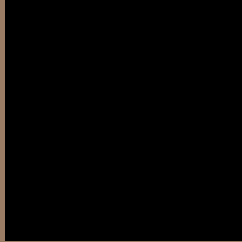
Large Text (above 18pt) WCAG AAA ✓ Pass

Any Text WCAG AAA × Fail

If you want to check with other color combinations, try the [Color Contrast Checker](#).

YIQ 131.2340, 25.5840, -1.1040

Background



This preview shows how black text looks on a background with the YIQ color 131.2340, 25.5840, -1.1040.



This preview shows how white text looks on a background with the YIQ color 131.2340, 25.5840,

-1.1040.

Color Blindness Simulation

Color vision deficiency is a very complex topic, and I could not describe the different causes any better than Wikipedia does, so if you want to learn more, you should check out their [article about color blindness](#).

Dichromacy



Original Color

131.2340, 25.5840, -1.1040

Protanopia

130.3140, 13.4350, -6.7010

Deuteranopia

131.5220, 24.7130, -1.8390



Tritanopia

133.0890, 19.1630, 10.6430

Trichromacy



Original Color

131.2340, 25.5840, -1.1040

Protanomaly

130.8200, 17.8820, -4.6940

Deuteranomaly

131.5220, 24.7130, -1.8390

Tritanomaly

132.1230, 21.8230, 6.4870

Monochromacy



Original Color

131.2340, 25.5840, -1.1040

Achromatopsia

131.0000, -0.0000, -0.0000

Achromatomaly

131.2630, 9.4450, -0.4670

CSS Examples

Text

The CSS property to change the color of the text to YIQ 131.2340, 25.5840, -1.1040 is called "color". The color property can be set on classes, ids or directly on the HTML element.

This example shows how text in the color `rgb(155, 125, 101)` looks like.

```
.text, #text, p{  
    color:rgb(155, 125, 101)  
}
```

If you want to add a text shadow in that color use the text-shadow property, you can generate a text shadow directly with our [CSS Text Shadow Generator](#).

Here you see how black text with a 4 pixel rgb(155, 125, 101) colored shadow looks like.

```
.shadow{ text-shadow: 4px 4px 2px rgb(155, 125, 101) }
```

Border

The CSS property to change the border of an element to YIQ 131.2340, 25.5840, -1.1040 is called "border". The border property can be set on classes, ids or directly on the HTML element.

This example shows the color as border, it can be applied via the CSS property "border" or "border-color".

```
.border, #border, table{ border:4px solid rgb(155, 125, 101) }
```


If only the border color should be changed use the property `border-color`.

```
.border{ border-color:rgb(155, 125, 101) }
```

If you want to add a box shadow in that color use:

Here you see how a box with a 4 pixel `rgb(155, 125, 101)` colored shadow looks like.

```
.boxshadow{ -moz-box-shadow:4px 4px 4px  
4px rgb(155, 125, 101); -webkit-box-  
shadow:4px 4px 4px 4px rgb(155, 125, 101);  
box-shadow:4px 4px 4px 4px rgb(155, 125,  
101) }
```

Background

The CSS property to change the background color of an element to YIQ 131.2340, 25.5840, -1.1040 is called "background". The background property can be set on classes, ids or directly on the HTML element.

```
.background, #background, body{  
background: rgb(155, 125, 101) }
```

If only the background color should be changed can be used:

```
.background{ background-color: rgb(155,  
125, 101) }
```

This example shows the color as background, it is applied via the CSS property "background".

To optimize and compress your CSS code, you can use our [online CSS compressor and optimizer](#) based on csstidy. If you want to create a linear or radial gradient as background or border, check our [CSS Gradient Generator](#).

Hey! You found this booklet interesting? Support Converting Colors with the new Membership Option!

The pro membership hides all ads, plus gives you double the colors in the color bucket, and more awesome pro features!

[Learn more, Memberships starting at \\$2.50/m!](#)

**Follow me
on Twitter!**

@ConvertingColor