

Converting Colors

YIQ(131.3290, 53.7780, 16.5780)

Have a look what the booklet for
YIQ(131.3290, 53.7780, 16.5780)
contains.

YIQ(131.3290, 53.7780, 16.5780)	3
<i>Conversions</i>	4
<i>Details</i>	6
<i>Harmonies</i>	12
<i>Previews</i>	24
<i>Color Blindness Simulation</i>	28
<i>CSS Examples</i>	31

Color

**YIQ(131.3290, 53.7780,
16.5780)**

Conversions

Conversions Part 1

Format	Color
Hex	C16A64
RGB	193, 106, 100
RGB Percent	76%, 42%, 39%
CMY	0.2429, 0.5844, 0.6076
CMYK	0.00, 0.45, 0.48, 0.24
HSL	4°, 43%, 57%
HSV	4°, 48%, 76%
XYZ	29.4587, 22.5660, 14.8737
YIQ	131.3290, 53.7780, 16.5780

Conversions

Conversions Part 2

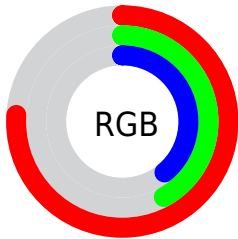
Format	Color
RYB	193, 106, 100
Decimal	12675684
CIELab	54.62, 33.97, 18.76
CIELCh	55, 38.802, 28.913
Yxy	22.5660, 0.4404, 0.3373
Android (android.graphics.Color)	4290865764 (0xFFC16A64)
YUV	131.3290, -15.4452, 54.0855
Hunter-Lab	47.5037, 27.5629, 14.6884

Details

The YIQ color **131.3290, 53.7780, 16.5780** is a dark color, and the websafe version is hex **CC6666**. A complement of this color would be **161.6710, -53.7780, -16.5780**, and the grayscale version is **131.0000, -0.0000, -0.0000**.

A 20% lighter version of the original color is **185.8950, 57.9960, 17.2280**, and **79.5780, 48.6430, 16.0270** is the 20% darker color. If you saturate the color by 10%, you get **118.5970, 64.8270, 20.0830**, and if you desaturate by 10%, it is **144.0610, 42.7290, 13.0730**.

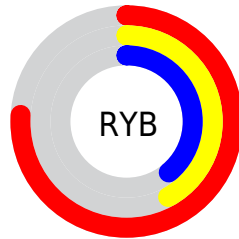
Distribution



Red (76%)

Green (42%)

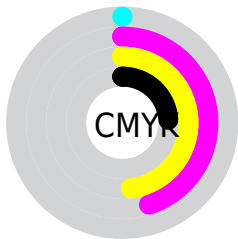
Blue (39%)



Red (76%)

Yellow (42%)

Blue (39%)

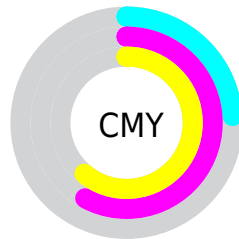


Cyan (0%)

Magenta (45%)

Yellow (48%)

Black (24%)



Cyan (24%)

Magenta (58%)

Yellow (61%)

Brightness & Saturation Gradients

These gradients show how the YIQ color 131.3290, 53.7780, 16.5780 changes by changing the brightness by 10 percent. The first figure shows a shift by +10% for each color and the second figure -10%.

Similar to the brightness gradients but the following saturation gradients show a change of the YIQ color 131.3290, 53.7780, 16.5780 by changing the saturation by 10% instead.

■ 131.3290, 53.7780,
16.5780

■ 131.3290, 53.7780,
16.5780

■ 255.0000, -0.0000,
-0.0000

■ 105.2470, 51.0730,
16.0410

■ 185.8950, 57.9960,
17.2280

■ 79.5780, 48.6430,
16.0270

■ 205.7190, 43.6920,
12.1400

■ 54.1370, 45.5710,
16.6350

■ 225.2330, 27.3250,
5.8930

■ 27.1200, 44.2410,
18.7130

■ 245.4480, 10.3620,
-0.5660

■ 16.4450, 32.7800,
11.6600

■ 6.8770, 13.7080,
4.8760

■ 0.0000, 0.0000,

0.0000

■ 131.3290, 53.7780,
16.5780

■ 131.3290, 53.7780,
16.5780

■ 118.5970, 64.8270,
20.0830

■ 144.0610, 42.7290,
13.0730

■ 105.7510, 76.1970,
23.2770

■ 156.9070, 31.3590,
9.8790

■ 93.0190, 87.2460,
26.7820

■ 169.6390, 20.3100,
6.3740

■ 80.2870, 98.2950,
30.2870

■ 182.3710, 9.2610,
2.8690

■ 67.5550, 109.3440,
33.7920

■ 195.2170, -2.1090,
-0.3250

■ 64.7510, 111.7280,
34.6400

■ 207.9490,
-13.1580, -3.8300

■ 221.2680,
-24.4820, -7.8580

■ 234.0000,
-35.5310, -11.3630

■ 236.4620,
-36.9520, -13.1440

Harmonies

Analogous

The Analogous color harmony consists of three colors that are next to each other on the color wheel.



133.0310, 43.4140, 28.1980



131.3290, 53.7780, 16.5780



129.7500, 50.4340, 0.0820

Triad

The Triadic color harmony groups three colors that are evenly spaced from another and form a triangle on the color wheel.



131.3290, 53.7780, 16.5780



118.6690, -25.0740, -30.1780



122.9320, -58.0460, 5.7140

Complementary

The Complementary color scheme is a pair of colors which are on the opposite of each other on the color wheel.



131.3290, 53.7780, 16.5780



161.6710, -53.7780, -16.5780

Split Complementary

Split-complementary colors differ from the complementary color scheme. The scheme consists of three colors, the original color and two neighbors of the complement color.



105.2590, -99.3520, -16.6320



131.3290, 53.7780, 16.5780



101.4680, -81.7880, -37.5960

Square

The Square scheme is like the rectangle color scheme, but the four colors are evenly spaced on the color wheel.



131.3290, 53.7780, 16.5780



124.2680, 9.9080, -25.3880



104.7570, -92.4270, -26.4990



132.3290, -16.1430, 22.7450

Rectangle

The Rectangle color scheme consists of four colors that form a rectangle on the color wheel.



131.3290, 53.7780, 16.5780



128.5220, 41.9080, -10.6040



104.7570, -92.4270, -26.4990



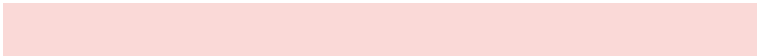
115.3100, -77.0260, -2.7380

Sweetspot

The Sweet Spot groups the original color and five complimentary colors.



131.3290, 53.7780, 16.5780



226.6390, 20.3100, 6.3740



137.8390, 27.1800, 47.0840



110.8660, 12.2410, 3.9290



252.0000, 0.0000, 0.0000



125.0000, 0.0000, 0.0000

Same Dimension

The Same Dimension uses a secret algorithm to generate beautiful new colors.



131.3290, 53.7780, 16.5780



153.6380, 83.9450, 26.0330



157.7440, 41.4030, -6.9570



90.5770, 5.6850, 1.5970



54.0090, 93.2060, 28.9020



11.0410, 19.1180, 5.9500

Inverse Universe

The Inverse Universe completely reimagines the original color for something new.



161.6710, -53.7780, -16.5780



201.3620, -83.9450, -26.0330



135.2560, -41.4030, 6.9570



93.4230, -5.6850, -1.5970



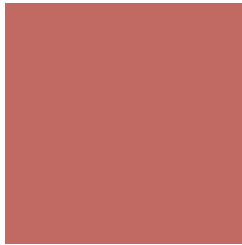
106.4040, -92.9310, -28.3790



21.9590, -19.1180, -5.9500

Previews

White Background



This preview shows how the YIQ color 131.3290, 53.7780, 16.5780 looks on a white background.

Color Contrast Check

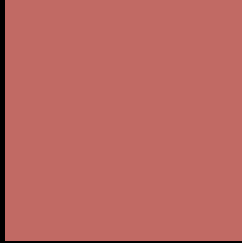
Large Text (above 18pt) WCAG AA ✓ Pass

Any Text WCAG AA × Fail

Large Text (above 18pt) WCAG AAA × Fail

Any Text WCAG AAA × Fail

Black Background



This preview shows how the YIQ color 131.3290, 53.7780, 16.5780 looks on a black background.

Color Contrast Check

Large Text (above 18pt) WCAG AA ✓ Pass

Any Text WCAG AA ✓ Pass

Large Text (above 18pt) WCAG AAA ✓ Pass

Any Text WCAG AAA × Fail

If you want to check with other color combinations, try the [Color Contrast Checker](#).

YIQ 131.3290, 53.7780, 16.5780

Background



This preview shows how black text looks on a background with the YIQ color 131.3290, 53.7780, 16.5780.



This preview shows how white text looks on a background with the YIQ color 131.3290, 53.7780,

Color Blindness Simulation

Color vision deficiency is a very complex topic, and I could not describe the different causes any better than Wikipedia does, so if you want to learn more, you should check out their [article about color blindness](#).

Dichromacy



Original Color

131.3290, 53.7780, 16.5780

Protanopia

130.9270, 10.2710, -4.4250

Deuteranopia

131.3650, 26.5930, -2.8710



Tritanopia

131.8220, 51.0720, 21.5680

Trichromacy



Original Color

131.3290, 53.7780, 16.5780

Protanomaly

131.1680, 25.9500, 3.2780

Deuteranomaly

131.5560, 36.5410, 4.0690

Tritanomaly

131.9530, 52.0810, 19.8010

Monochromacy



Original Color

131.3290, 53.7780, 16.5780

Achromatopsia

131.0000, -0.0000, -0.0000

Achromatomaly

131.3400, 19.7140, 6.1620

CSS Examples

Text

The CSS property to change the color of the text to YIQ 131.3290, 53.7780, 16.5780 is called "color". The color property can be set on classes, ids or directly on the HTML element.

This example shows how text in the color `rgb(193, 106, 100)` looks like.

```
.text, #text, p{  
    color:rgb(193, 106, 100)  
}
```

If you want to add a text shadow in that color use the text-shadow property, you can generate a text shadow directly with our [CSS Text Shadow Generator](#).

Here you see how black text with a 4 pixel rgb(193, 106, 100) colored shadow looks like.

```
.shadow{ text-shadow: 4px 4px 2px rgb(193, 106, 100) }
```

Border

The CSS property to change the border of an element to YIQ 131.3290, 53.7780, 16.5780 is called "border". The border property can be set on classes, ids or directly on the HTML element.

This example shows the color as border, it can be applied via the CSS property "border" or "border-color".

```
.border, #border, table{ border:4px solid rgb(193, 106, 100) }
```


If only the border color should be changed use the property `border-color`.

```
.border{ border-color:rgb(193, 106, 100) }
```

If you want to add a box shadow in that color use:

Here you see how a box with a 4 pixel `rgb(193, 106, 100)` colored shadow looks like.

```
.boxshadow{ -moz-box-shadow:4px 4px 4px  
4px rgb(193, 106, 100); -webkit-box-  
shadow:4px 4px 4px 4px rgb(193, 106, 100);  
box-shadow:4px 4px 4px 4px rgb(193, 106,  
100) }
```

Background

The CSS property to change the background color of an element to YIQ 131.3290, 53.7780, 16.5780 is called "background". The background property can be set on classes, ids or directly on the HTML element.

```
.background, #background, body{  
background: rgb(193, 106, 100) }
```

If only the background color should be changed can be used:

```
.background{ background-color: rgb(193,  
106, 100) }
```

This example shows the color as background, it is applied via the CSS property "background".

To optimize and compress your CSS code, you can use our [online CSS compressor and optimizer](#) based on csstidy. If you want to create a linear or radial gradient as background or border, check our [CSS Gradient Generator](#).

Hey! You found this booklet interesting? Support Converting Colors with the new Membership Option!

The pro membership hides all ads, plus gives you double the colors in the color bucket, and more awesome pro features!

[Learn more, Memberships starting at \\$2.50/m!](#)

**Follow me
on Twitter!**

@ConvertingColor