

Converting Colors

YIQ(131.5660, 76.4210, 52.2690)

Have a look what the booklet for
YIQ(131.5660, 76.4210, 52.2690)
contains.

YIQ(131.5660, 76.4210, 52.2690)	3
<i>Conversions</i>	4
<i>Details</i>	6
<i>Harmonies</i>	12
<i>Previews</i>	24
<i>Color Blindness Simulation</i>	28
<i>CSS Examples</i>	31

Color

**YIQ(131.5660, 76.4210,
52.2690)**

Conversions

Conversions Part 1

Format	Color
Hex	ED4D88
RGB	237, 77, 136
RGB Percent	93%, 30%, 53%
CMY	0.0702, 0.6983, 0.4664
CMYK	0.00, 0.68, 0.43, 0.07
HSL	338°, 82%, 62%
HSV	338°, 68%, 93%
XYZ	42.0584, 25.1007, 25.9452
YIQ	131.5660, 76.4210, 52.2690

Conversions

Conversions Part 2

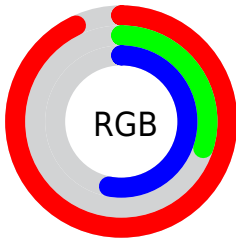
Format	Color
R_{YB}	237, 77, 136
Decimal	15551880
CIE _{Lab}	57.17, 65.61, 2.17
CIE _{LCh}	57, 65.648, 1.893
Yxy	25.1007, 0.4517, 0.2696
Android (android.graphics.Color)	4293741960 (0xFFED4D88)
YUV	131.5660, 2.1860, 92.4656
Hunter-Lab	50.1006, 62.1711, 4.3663

Details

The YIQ color **131.5660, 76.4210, 52.2690** is a dark color, and the websafe version is hex **FF6699**. The color can be described as middle muted rose. A complement of this color would be **182.4340, -76.4210, -52.2690**, and the grayscale version is **131.0000, -0.0000, -0.0000**.

A 20% lighter version of the original color is **177.0360, 54.1860, 42.2340**, and **62.5420, 76.9690, 64.3690** is the 20% darker color. If you saturate the color by 10%, you get **115.7680, 87.8360, 60.1560**, and if you desaturate by 10%, it is **147.3640, 65.0060, 44.3820**.

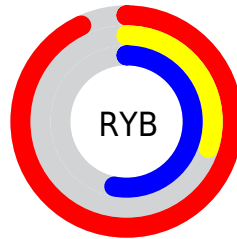
Distribution



Red (93%)

Green (30%)

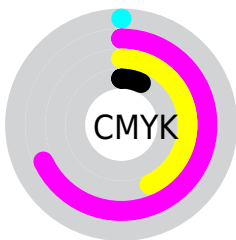
Blue (53%)



Red (93%)

Yellow (30%)

Blue (53%)

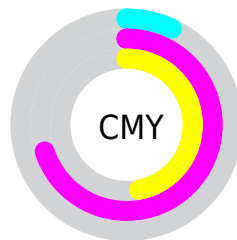


Cyan (0%)

Magenta (68%)

Yellow (43%)

Black (7%)



Cyan (7%)

Magenta (70%)

Yellow (47%)

Brightness & Saturation Gradients

These gradients show how the YIQ color 131.5660, 76.4210, 52.2690 changes by changing the brightness by 10 percent. The first figure shows a shift by +10% for each color and the second figure -10%.

Similar to the brightness gradients but the following saturation gradients show a change of the YIQ color 131.5660, 76.4210, 52.2690 by changing the saturation by 10% instead.

131.5660, 76.4210,
52.2690

131.5660, 76.4210,
52.2690

255.0000, -0.0000,
-0.0000

100.0760, 75.0450,
55.1810

177.0360, 54.1860,
42.2340

62.5420, 76.9690,
64.3690

197.2510, 37.2230,
35.7750

50.9500, 66.4720,
50.8560

217.4660, 20.2600,
29.3160

39.7710, 56.2500,
37.8660

236.2160, 8.8000,
16.7360

28.5210, 44.7900,
25.2860

253.2390, 0.8250,
1.5690

18.2820, 34.7970,
13.6530

6.5780, 13.1120,

4.6640

■ 0.0000, 0.0000,
0.0000

■ 131.5660, 76.4210,
52.2690

■ 131.5660, 76.4210,
52.2690

■ 115.7680, 87.8360,
60.1560

■ 147.3640, 65.0060,
44.3820

■ 100.5570, 98.9760,
67.5200

■ 162.5750, 53.8660,
37.0180

■ 84.7590, 110.3910,
75.4070

■ 178.3730, 42.4510,
29.1310

■ 80.8950, 113.0040,
77.6120

■ 194.1710, 31.0360,
21.2440

■ 209.3820, 19.8960,
13.8800

■ 225.1800, 8.4810,
5.9930

■ 240.9780, -2.9340,
-1.8940

■ 249.6180,
-10.7280, -3.8160

Harmonies

Analogous

The Analogous color harmony consists of three colors that are next to each other on the color wheel.



138.6710, 36.7610, 55.1690



131.5660, 76.4210, 52.2690



130.7420, 89.5840, 28.4640

Triad

The Triadic color harmony groups three colors that are evenly spaced from another and form a triangle on the color wheel.



131.5660, 76.4210, 52.2690



122.0560, 12.4800, -49.9840



119.2910, -119.5730, -8.0930

Complementary

The Complementary color scheme is a pair of colors which are on the opposite of each other on the color wheel.



131.5660, 76.4210, 52.2690



182.4340, -76.4210, -52.2690

Split Complementary

Split-complementary colors differ from the complementary color scheme. The scheme consists of three colors, the original color and two neighbors of the complement color.



118.0250, -107.7410, -24.2930



131.5660, 76.4210, 52.2690



103.0400, -69.6800, -58.8000

Square

The Square scheme is like the rectangle color scheme, but the four colors are evenly spaced on the color wheel.



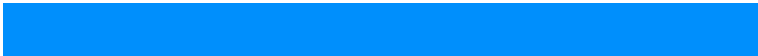
131.5660, 76.4210, 52.2690



127.9710, 58.5560, -36.9960



111.5270, -89.4440, -42.0200



112.6690, -120.2170, 3.5830

Rectangle

The Rectangle color scheme consists of four colors that form a rectangle on the color wheel.



131.5660, 76.4210, 52.2690



131.7620, 85.6910, 5.3950



111.5270, -89.4440, -42.0200



119.7980, -116.8670, -13.0830

Sweetspot

The Sweet Spot groups the original color and five complimentary colors.



131.5660, 76.4210, 52.2690



221.4150, 24.2970, 16.7210



124.8410, 7.6440, 70.7480



107.5230, 14.9450, 9.9930



0.0000, 0.0000, 0.0000



128.0000, -0.0000, -0.0000

Same Dimension

The Same Dimension uses a secret algorithm to generate beautiful new colors.



131.5660, 76.4210, 52.2690



118.6710, 98.6550, 67.8310



135.9930, 90.1350, 23.9830



109.7450, 5.2720, 3.5760



61.7570, 86.3690, 59.2090



18.4260, 25.7640, 17.6680

Inverse Universe

The Inverse Universe completely reimagines the original color for something new.



131.5660, 76.4210, 52.2690



118.6710, 98.6550, 67.8310



178.0070, -90.1350, -23.9830



109.7450, 5.2720, 3.5760



61.7570, 86.3690, 59.2090



18.4260, 25.7640, 17.6680

Previews

White Background



This preview shows how the YIQ color 131.5660, 76.4210, 52.2690 looks on a white background.

Color Contrast Check

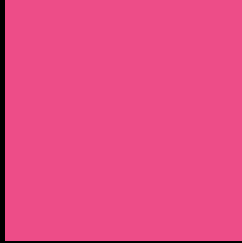
Large Text (above 18pt) WCAG AA ✓ Pass

Any Text WCAG AA × Fail

Large Text (above 18pt) WCAG AAA × Fail

Any Text WCAG AAA × Fail

Black Background



This preview shows how the YIQ color 131.5660, 76.4210, 52.2690 looks on a black background.

Color Contrast Check

Large Text (above 18pt) WCAG AA ✓ Pass

Any Text WCAG AA ✓ Pass

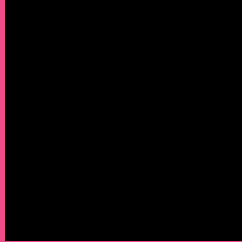
Large Text (above 18pt) WCAG AAA ✓ Pass

Any Text WCAG AAA × Fail

If you want to check with other color combinations, try the [Color Contrast Checker](#).

YIQ 131.5660, 76.4210, 52.2690

Background



This preview shows how black text looks on a background with the YIQ color 131.5660, 76.4210, 52.2690.



This preview shows how white text looks on a background with the YIQ color 131.5660, 76.4210,

Color Blindness Simulation

Color vision deficiency is a very complex topic, and I could not describe the different causes any better than Wikipedia does, so if you want to learn more, you should check out their [article about color blindness](#).

Dichromacy



Original Color

131.5660, 76.4210, 52.2690

Protanopia

138.0110, -15.7280, 9.7120

Deuteranopia

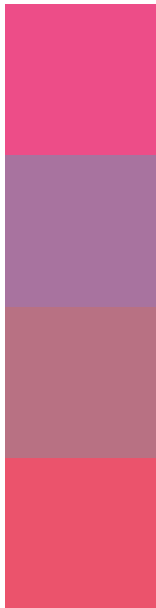
138.7090, 14.1210, 2.8970



Tritanopia

131.5230, 86.0070, 32.7190

Trichromacy



Original Color

131.5660, 76.4210, 52.2690

Protanomaly

135.8630, 17.4640, 24.9200

Deuteranomaly

136.2810, 36.5380, 20.6500

Tritanomaly

131.2980, 82.5670, 39.9990

Monochromacy



Original Color

131.5660, 76.4210, 52.2690

Achromatopsia

132.0000, -0.0000, -0.0000

Achromatomaly

131.7360, 27.8270, 18.8270

CSS Examples

Text

The CSS property to change the color of the text to YIQ 131.5660, 76.4210, 52.2690 is called "color". The color property can be set on classes, ids or directly on the HTML element.

This example shows how text in the color `rgb(237, 77, 136)` looks like.

```
.text, #text, p{  
    color:rgb(237, 77, 136)  
}
```

If you want to add a text shadow in that color use the text-shadow property, you can generate a text shadow directly with our [CSS Text Shadow Generator](#).

Here you see how black text with a 4 pixel rgb(237, 77, 136) colored shadow looks like.

```
.shadow{ text-shadow: 4px 4px 2px rgb(237, 77, 136) }
```

Border

The CSS property to change the border of an element to YIQ 131.5660, 76.4210, 52.2690 is called "border". The border property can be set on classes, ids or directly on the HTML element.

This example shows the color as border, it can be applied via the CSS property "border" or "border-color".

```
.border, #border, table{ border:4px solid rgb(237, 77, 136) }
```


If only the border color should be changed use the property border-color.

```
.border{ border-color:rgb(237, 77, 136) }
```

If you want to add a box shadow in that color use:

Here you see how a box with a 4 pixel rgb(237, 77, 136) colored shadow looks like.

```
.boxshadow{ -moz-box-shadow:4px 4px 4px  
4px rgb(237, 77, 136); -webkit-box-  
shadow:4px 4px 4px 4px rgb(237, 77, 136);  
box-shadow:4px 4px 4px 4px rgb(237, 77,  
136) }
```

Background

The CSS property to change the background color of an element to YIQ 131.5660, 76.4210, 52.2690 is called "background". The background property can be set on classes, ids or directly on the HTML element.

```
.background, #background, body{  
background: rgb(237, 77, 136) }
```

If only the background color should be changed can be used:

```
.background{ background-color: rgb(237, 77,  
136) }
```

This example shows the color as background, it is applied via the CSS property "background".

To optimize and compress your CSS code, you can use our [online CSS compressor and optimizer](#) based on csstidy. If you want to create a linear or radial gradient as background or border, check our [CSS Gradient Generator](#).

Hey! You found this booklet interesting? Support Converting Colors with the new Membership Option!

The pro membership hides all ads, plus gives you double the colors in the color bucket, and more awesome pro features!

[Learn more, Memberships starting at \\$2.50/m!](#)

**Follow me
on Twitter!**

@ConvertingColor