

Converting Colors

YIQ(134.2180, 48.8760, -4.7240)

Have a look what the booklet for
YIQ(134.2180, 48.8760, -4.7240)
contains.

YIQ(134.2180, 48.8760, -4.7240)	3
<i>Conversions</i>	4
<i>Details</i>	6
<i>Harmonies</i>	12
<i>Previews</i>	24
<i>Color Blindness Simulation</i>	28
<i>CSS Examples</i>	31

Color

**YIQ(134.2180, 48.8760,
-4.7240)**

Conversions

Conversions Part 1

Format	Color
Hex	B27C48
RGB	178, 124, 72
RGB Percent	70%, 49%, 28%
CMY	0.3019, 0.5138, 0.7174
CMYK	0.00, 0.30, 0.60, 0.30
HSL	29°, 42%, 49%
HSV	29°, 60%, 70%
XYZ	26.7422, 24.3461, 9.4309
YIQ	134.2180, 48.8760, -4.7240

Conversions

Conversions Part 2

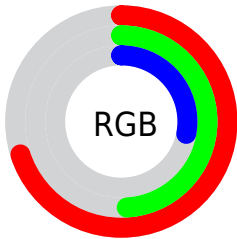
Format	Color
R_{YB}	178, 174, 72
Decimal	11697224
CIE _{Lab}	56.43, 15.42, 36.39
CIE _{LCh}	56, 39.528, 67.032
Yxy	24.3461, 0.4419, 0.4023
Android (android.graphics.Color)	4289887304 (0xFFB27C48)
YUV	134.2180, -30.6735, 38.3968
Hunter-Lab	49.3418, 10.3950, 23.2069

Details

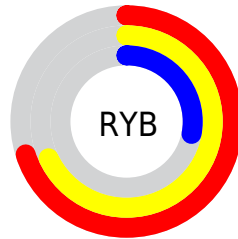
The YIQ color **134.2180, 48.8760, -4.7240** is a dark color, and the websafe version is hex **996633**. A complement of this color would be **115.7820, -48.8760, 4.7240**, and the grayscale version is **134.0000, -0.0000, -0.0000**.

A 20% lighter version of the original color is **188.3710, 52.8190, -4.5970**, and **83.3530, 44.0620, -5.5860** is the 20% darker color. If you saturate the color by 10%, you get **126.8830, 57.1290, -5.6150**, and if you desaturate by 10%, it is **141.5530, 40.6230, -3.8330**.

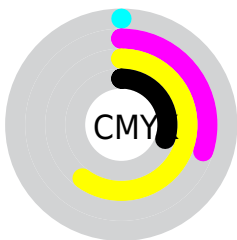
Distribution



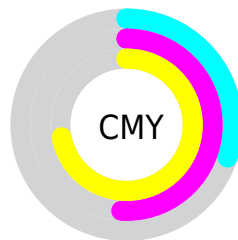
- Red (70%)
- Green (49%)
- Blue (28%)



- Red (70%)
- Yellow (68%)
- Blue (28%)



- Cyan (0%)
- Magenta (30%)
- Yellow (60%)
- Black (30%)



- Cyan (30%)
- Magenta (51%)
- Yellow (72%)

Brightness & Saturation Gradients

These gradients show how the YIQ color 134.2180, 48.8760, -4.7240 changes by changing the brightness by 10 percent. The first figure shows a shift by +10% for each color and the second figure -10%.

Similar to the brightness gradients but the following saturation gradients show a change of the YIQ color 134.2180, 48.8760, -4.7240 by changing the saturation by 10% instead.

■ 134.2180, 48.8760,
-4.7240

■ 134.2180, 48.8760,
-4.7240

■ 255.0000, -0.0000,
-0.0000

■ 108.4350, 46.7670,
-5.0490

■ 188.3710, 52.8190,
-4.5970

■ 83.3530, 44.0620,
-5.5860

■ 212.8650, 48.3720,
-6.6040

■ 58.9290, 42.3200,
-7.0560

■ 232.3790, 32.0050,
-12.8510

■ 38.5290, 32.0030,
-1.7970

■ 249.0720, 16.6920,
-16.1720

■ 18.7270, 22.8780,
3.8860

■ 252.2640, 7.7040,
-7.4640

■ 0.0000, 0.0000,
0.0000

■ 134.2180, 48.8760,
-4.7240

■ 134.2180, 48.8760,
-4.7240

■ 126.8830, 57.1290,
-5.6150

■ 141.5530, 40.6230,
-3.8330

■ 119.5480, 65.3820,
-6.5060

■ 148.8880, 32.3700,
-2.9420

■ 112.3270, 73.3140,
-7.0860

■ 156.1090, 24.4380,
-2.3620

■ 104.9920, 81.5670,
-7.9770

■ 163.4440, 16.1850,
-1.4710

■ 104.2910, 82.1630,
-7.7650

■ 170.7790, 7.9320,
-0.5800

■ 178.1140, -0.3210,
0.3110

■ 186.0360, -8.8490,
0.6790

■ 193.2570,

-16.7810, 1.2590

■ 200.5920,
-25.0340, 2.1500

Harmonies

Analogous

The Analogous color harmony consists of three colors that are next to each other on the color wheel.



135.5910, 55.7960, 13.0440



134.2180, 48.8760, -4.7240



131.7930, 30.5390, -19.3250

Triad

The Triadic color harmony groups three colors that are evenly spaced from another and form a triangle on the color wheel.



134.2180, 48.8760, -4.7240



106.1130, -87.9780, -35.5460



138.4120, -6.0110, 26.3490

Complementary

The Complementary color scheme is a pair of colors which are on the opposite of each other on the color wheel.



134.2180, 48.8760, -4.7240



115.7820, -48.8760, 4.7240

Split Complementary

Split-complementary colors differ from the complementary color scheme. The scheme consists of three colors, the original color and two neighbors of the complement color.



131.0800, -46.5390, 11.9330



134.2180, 48.8760, -4.7240



109.2880, -98.2960, -24.7600

Square

The Square scheme is like the rectangle color scheme, but the four colors are evenly spaced on the color wheel.



134.2180, 48.8760, -4.7240



120.5690, -36.5360, -31.7040



108.2740, -103.7080, -14.7800



138.7550, 26.8160, 31.6480

Rectangle

The Rectangle color scheme consists of four colors that form a rectangle on the color wheel.



134.2180, 48.8760, -4.7240



129.5240, 12.0630, -25.8970



108.2740, -103.7080, -14.7800



137.3610, -19.1690, 22.5190

Sweetspot

The Sweet Spot groups the original color and five complimentary colors.



134.2180, 48.8760, -4.7240



214.8850, 19.2570, -2.0790



109.9640, 45.5210, 39.5770



106.4050, 11.9210, -1.2870



245.0000, -0.0000, 0.0000



117.0000, -0.0000, 0.0000

Same Dimension

The Same Dimension uses a secret algorithm to generate beautiful new colors.



134.2180, 48.8760, -4.7240



163.8820, 76.0650, -7.3830



164.7420, 34.5760, -31.9200



85.6260, 3.9890, -0.7070



89.7720, 70.5630, -6.7890



14.8180, 12.1960, -0.7640

Inverse Universe

The Inverse Universe completely reimagines the original color for something new.



115.7820, -48.8760, 4.7240



135.1180, -76.0650, 7.3830



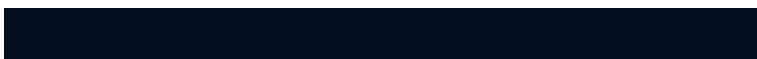
85.2580, -34.5760, 31.9200



83.9610, -4.2640, 0.1840



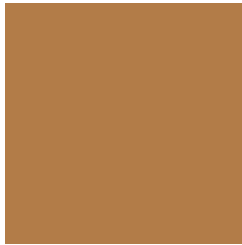
63.2280, -70.5630, 6.7890



10.5950, -11.9210, 1.2870

Previews

White Background



This preview shows how the YIQ color 134.2180, 48.8760, -4.7240 looks on a white background.

Color Contrast Check

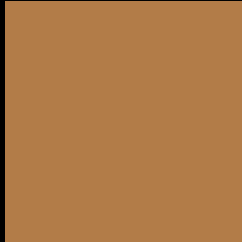
Large Text (above 18pt) WCAG AA ✓ Pass

Any Text WCAG AA × Fail

Large Text (above 18pt) WCAG AAA × Fail

Any Text WCAG AAA × Fail

Black Background



This preview shows how the YIQ color 134.2180, 48.8760, -4.7240 looks on a black background.

Color Contrast Check

Large Text (above 18pt) WCAG AA ✓ Pass

Any Text WCAG AA ✓ Pass

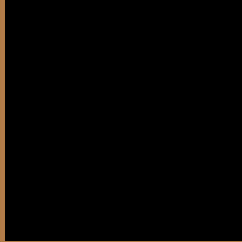
Large Text (above 18pt) WCAG AAA ✓ Pass

Any Text WCAG AAA × Fail

If you want to check with other color combinations, try the [Color Contrast Checker](#).

YIQ 134.2180, 48.8760, -4.7240

Background



This preview shows how black text looks on a background with the YIQ color 134.2180, 48.8760, -4.7240.



This preview shows how white text looks on a background with the YIQ color 134.2180, 48.8760,

-4.7240.

Color Blindness Simulation

Color vision deficiency is a very complex topic, and I could not describe the different causes any better than Wikipedia does, so if you want to learn more, you should check out their [article about color blindness](#).

Dichromacy



Original Color

134.2180, 48.8760, -4.7240

Protanopia

133.0470, 27.0080, -15.9040

Deuteranopia

133.4510, 40.6700, -10.1940



Tritanopia

138.0480, 35.5760, 16.0560

Trichromacy



Original Color

134.2180, 48.8760, -4.7240

Protanomaly

133.8740, 34.9850, -11.7910

Deuteranomaly

133.4730, 43.6040, -8.3000

Tritanomaly

136.6430, 40.8500, 8.5780

Monochromacy



Original Color

134.2180, 48.8760, -4.7240

Achromatopsia

134.0000, -0.0000, -0.0000

Achromatomaly

133.8140, 18.0190, -1.6690

CSS Examples

Text

The CSS property to change the color of the text to YIQ 134.2180, 48.8760, -4.7240 is called "color". The color property can be set on classes, ids or directly on the HTML element.

This example shows how text in the color `rgb(178, 124, 72)` looks like.

```
.text, #text, p{  
    color:rgb(178, 124, 72)  
}
```

If you want to add a text shadow in that color use the text-shadow property, you can generate a text shadow directly with our [CSS Text Shadow Generator](#).

Here you see how black text with a 4 pixel rgb(178, 124, 72) colored shadow looks like.

```
.shadow{ text-shadow: 4px 4px 2px rgb(178, 124, 72) }
```

Border

The CSS property to change the border of an element to YIQ 134.2180, 48.8760, -4.7240 is called "border". The border property can be set on classes, ids or directly on the HTML element.

This example shows the color as border, it can be applied via the CSS property "border" or "border-color".

```
.border, #border, table{ border:4px solid rgb(178, 124, 72) }
```


If only the border color should be changed use the property border-color.

```
.border{ border-color:rgb(178, 124, 72) }
```

If you want to add a box shadow in that color use:

Here you see how a box with a 4 pixel rgb(178, 124, 72) colored shadow looks like.

```
.boxshadow{ -moz-box-shadow:4px 4px 4px  
4px rgb(178, 124, 72); -webkit-box-  
shadow:4px 4px 4px 4px rgb(178, 124, 72);  
box-shadow:4px 4px 4px 4px rgb(178, 124,  
72) }
```

Background

The CSS property to change the background color of an element to YIQ 134.2180, 48.8760, -4.7240 is called "background". The background property can be set on classes, ids or directly on the HTML element.

```
.background, #background, body{  
background: rgb(178, 124, 72) }
```

If only the background color should be changed can be used:

```
.background{ background-color: rgb(178,  
124, 72) }
```

This example shows the color as background, it is applied via the CSS property "background".

To optimize and compress your CSS code, you can use our [online CSS compressor and optimizer](#) based on csstidy. If you want to create a linear or radial gradient as background or border, check our [CSS Gradient Generator](#).

Hey! You found this booklet interesting? Support Converting Colors with the new Membership Option!

The pro membership hides all ads, plus gives you double the colors in the color bucket, and more awesome pro features!

[Learn more, Memberships starting at \\$2.50/m!](#)

**Follow me
on Twitter!**

@ConvertingColor