

Converting Colors

YIQ(134.2300, 31.4070, -2.0090)

Have a look what the booklet for
YIQ(134.2300, 31.4070, -2.0090)
contains.

YIQ(134.2300, 31.4070, -2.0090)	3
<i>Conversions</i>	4
<i>Details</i>	6
<i>Harmonies</i>	12
<i>Previews</i>	24
<i>Color Blindness Simulation</i>	28
<i>CSS Examples</i>	31

Color

**YIQ(134.2300, 31.4070,
-2.0090)**

Conversions

Conversions Part 1

Format	Color
Hex	A37F60
RGB	163, 127, 96
RGB Percent	64%, 50%, 38%
CMY	0.3607, 0.5020, 0.6234
CMYK	0.00, 0.22, 0.41, 0.36
HSL	28°, 27%, 51%
HSV	28°, 41%, 64%
XYZ	24.8082, 23.8084, 14.3634
YIQ	134.2300, 31.4070, -2.0090

Conversions

Conversions Part 2

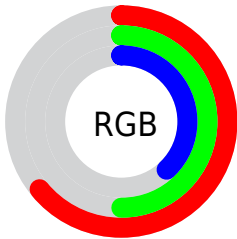
Format	Color
R_{YB}	163, 154, 96
Decimal	10714976
CIE _{Lab}	55.90, 9.64, 22.15
CIE _{LCh}	56, 24.155, 66.469
Yxy	23.8084, 0.3939, 0.3780
Android (android.graphics.Color)	4288905056 (0xFFA37F60)
YUV	134.2300, -18.8474, 25.2313
Hunter-Lab	48.7938, 5.3654, 16.7025

Details

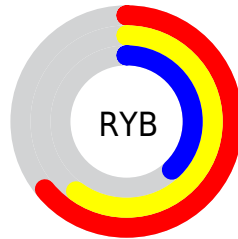
The YIQ color **134.2300, 31.4070, -2.0090** is a dark color, and the websafe version is hex **CC9966**. A complement of this color would be **124.7700, -31.4070, 2.0090**, and the grayscale version is **134.0000, -0.0000, -0.0000**.

A 20% lighter version of the original color is **187.8990, 33.8370, -1.9950**, and **84.2620, 28.3810, -2.2350** is the 20% darker color. If you saturate the color by 10%, you get **127.1230, 39.0180, -2.2780**, and if you desaturate by 10%, it is **141.3370, 23.7960, -1.7400**.

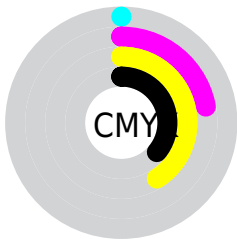
Distribution



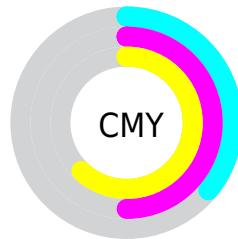
- Red (64%)
- Green (50%)
- Blue (38%)



- Red (64%)
- Yellow (60%)
- Blue (38%)



- Cyan (0%)
- Magenta (22%)
- Yellow (41%)
- Black (36%)



- Cyan (36%)
- Magenta (50%)
- Yellow (62%)

Brightness & Saturation Gradients

These gradients show how the YIQ color 134.2300, 31.4070, -2.0090 changes by changing the brightness by 10 percent. The first figure shows a shift by +10% for each color and the second figure -10%.

Similar to the brightness gradients but the following saturation gradients show a change of the YIQ color 134.2300, 31.4070, -2.0090 by changing the saturation by 10% instead.

■ 134.2300, 31.4070,
-2.0090

■ 134.2300, 31.4070,
-2.0090

■ 255.0000, -0.0000,
-0.0000

■ 108.7460, 29.8940,
-2.1220

■ 187.8990, 33.8370,
-1.9950

■ 84.2620, 28.3810,
-2.2350

■ 215.4970, 35.0290,
-1.5710

■ 60.5930, 25.9510,
-2.2490

■ 237.1040, 22.8340,
-6.3340

■ 38.2400, 25.4470,
-4.1290

■ 252.0360, 8.3460,
-8.0860

■ 18.3950, 17.8810,
0.8330

■ 0.0000, 0.0000,
0.0000

■ 134.2300, 31.4070,
-2.0090

■ 134.2300, 31.4070,
-2.0090

■ 127.1230, 39.0180,
-2.2780

■ 141.3370, 23.7960,
-1.7400

■ 119.9020, 46.9500,
-2.8580

■ 148.5580, 15.8640,
-1.1600

■ 113.3820, 54.2860,
-3.6500

■ 155.0780, 8.5280,
-0.3680

■ 106.2750, 61.8970,
-3.9190

■ 162.1850, 0.9170,
-0.0990

■ 99.1680, 69.5080,
-4.1880

■ 169.4060, -7.0150,
0.4810

■ 92.7620, 76.5230,
-4.6690

■ 176.5130,
-14.6260, 0.7500

■ 183.0330,
-21.9620, 1.5420

■ 190.1400,

-29.5730, 1.8110

■ 197.3610,
-37.5050, 2.3910

Harmonies

Analogous

The Analogous color harmony consists of three colors that are next to each other on the color wheel.



135.5930, 35.1190, 7.8150



134.2300, 31.4070, -2.0090



132.2020, 19.4420, -10.9420

Triad

The Triadic color harmony groups three colors that are evenly spaced from another and form a triangle on the color wheel.



134.2300, 31.4070, -2.0090



124.1580, -39.1520, -17.3280



136.4580, -3.6250, 16.1430

Complementary

The Complementary color scheme is a pair of colors which are on the opposite of each other on the color wheel.



134.2300, 31.4070, -2.0090



124.7700, -31.4070, 2.0090

Split Complementary

Split-complementary colors differ from the complementary color scheme. The scheme consists of three colors, the original color and two neighbors of the complement color.



132.6940, -25.0810, 8.5110



134.2300, 31.4070, -2.0090



122.8720, -49.7900, -11.7580

Square

The Square scheme is like the rectangle color scheme, but the four colors are evenly spaced on the color wheel.



134.2300, 31.4070, -2.0090



126.8690, -19.3450, -18.3610



127.4910, -43.9230, -2.4430



137.5760, 16.5940, 18.6580

Rectangle

The Rectangle color scheme consists of four colors that form a rectangle on the color wheel.



134.2300, 31.4070, -2.0090



130.5210, 8.1180, -14.9700



127.4910, -43.9230, -2.4430



135.2830, -10.5020, 14.1220

Sweetspot

The Sweet Spot groups the original color and five complimentary colors.



134.2300, 31.4070, -2.0090



200.8180, 12.1960, -0.7640



120.2510, 28.0550, 25.7110



100.5940, 7.0150, -0.4810



235.0000, 0.0000, -0.0000



107.0000, -0.0000, 0.0000

Same Dimension

The Same Dimension uses a secret algorithm to generate beautiful new colors.



134.2300, 31.4070, -2.0090



167.2720, 48.7840, -3.0560



153.6010, 22.3320, -19.2680



78.0390, 4.2640, -0.1840



82.6840, 67.9950, -4.3010



10.0780, 8.5280, -0.3680

Inverse Universe

The Inverse Universe completely reimagines the original color for something new.



124.7700, -31.4070, 2.0090



152.7280, -48.7840, 3.0560



105.3990, -22.3320, 19.2680



76.9610, -4.2640, 0.1840



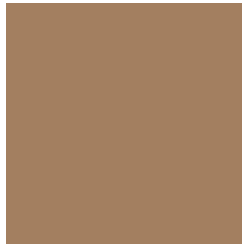
62.3160, -67.9950, 4.3010



7.9220, -8.5280, 0.3680

Previews

White Background



This preview shows how the YIQ color 134.2300, 31.4070, -2.0090 looks on a white background.

Color Contrast Check

Large Text (above 18pt) WCAG AA ✓ Pass

Any Text WCAG AA × Fail

Large Text (above 18pt) WCAG AAA × Fail

Any Text WCAG AAA × Fail

Black Background



This preview shows how the YIQ color 134.2300, 31.4070, -2.0090 looks on a black background.

Color Contrast Check

Large Text (above 18pt) WCAG AA ✓ Pass

Any Text WCAG AA ✓ Pass

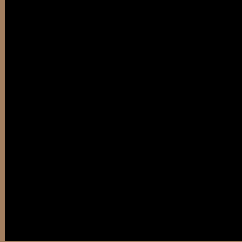
Large Text (above 18pt) WCAG AAA ✓ Pass

Any Text WCAG AAA × Fail

If you want to check with other color combinations, try the [Color Contrast Checker](#).

YIQ 134.2300, 31.4070, -2.0090

Background



This preview shows how black text looks on a background with the YIQ color 134.2300, 31.4070, -2.0090.



This preview shows how white text looks on a background with the YIQ color 134.2300, 31.4070, -2.0090.

-2.0090.

Color Blindness Simulation

Color vision deficiency is a very complex topic, and I could not describe the different causes any better than Wikipedia does, so if you want to learn more, you should check out their [article about color blindness](#).

Dichromacy



Original Color

134.2300, 31.4070, -2.0090

Protanopia

133.0000, 17.1950, -8.7650

Deuteranopia

134.2080, 28.4730, -3.9030



Tritanopia

136.2960, 23.0140, 12.4380

Trichromacy



Original Color

134.2300, 31.4070, -2.0090

Protanomaly

133.2180, 22.5130, -6.0230

Deuteranomaly

133.9200, 29.3440, -3.1680

Tritanomaly

135.6890, 26.0410, 7.1370

Monochromacy



Original Color

134.2300, 31.4070, -2.0090

Achromatopsia

134.0000, -0.0000, -0.0000

Achromatomaly

133.9320, 11.8750, -0.4530

CSS Examples

Text

The CSS property to change the color of the text to YIQ 134.2300, 31.4070, -2.0090 is called "color". The color property can be set on classes, ids or directly on the HTML element.

This example shows how text in the color `rgb(163, 127, 96)` looks like.

```
.text, #text, p{  
    color:rgb(163, 127, 96)  
}
```

If you want to add a text shadow in that color use the text-shadow property, you can generate a text shadow directly with our [CSS Text Shadow Generator](#).

Here you see how black text with a 4 pixel rgb(163, 127, 96) colored shadow looks like.

```
.shadow{ text-shadow: 4px 4px 2px rgb(163, 127, 96) }
```

Border

The CSS property to change the border of an element to YIQ 134.2300, 31.4070, -2.0090 is called "border". The border property can be set on classes, ids or directly on the HTML element.

This example shows the color as border, it can be applied via the CSS property "border" or "border-color".

```
.border, #border, table{ border:4px solid rgb(163, 127, 96) }
```


If only the border color should be changed use the property `border-color`.

```
.border{ border-color:rgb(163, 127, 96) }
```

If you want to add a box shadow in that color use:

Here you see how a box with a 4 pixel `rgb(163, 127, 96)` colored shadow looks like.

```
.boxshadow{ -moz-box-shadow:4px 4px 4px  
4px rgb(163, 127, 96); -webkit-box-  
shadow:4px 4px 4px 4px rgb(163, 127, 96);  
box-shadow:4px 4px 4px 4px rgb(163, 127,  
96) }
```

Background

The CSS property to change the background color of an element to YIQ 134.2300, 31.4070, -2.0090 is called "background". The background property can be set on classes, ids or directly on the HTML element.

```
.background, #background, body{  
background: rgb(163, 127, 96) }
```

If only the background color should be changed can be used:

```
.background{ background-color: rgb(163,  
127, 96) }
```

This example shows the color as background, it is applied via the CSS property "background".

To optimize and compress your CSS code, you can use our [online CSS compressor and optimizer](#) based on csstidy. If you want to create a linear or radial gradient as background or border, check our [CSS Gradient Generator](#).

Hey! You found this booklet interesting? Support Converting Colors with the new Membership Option!

The pro membership hides all ads, plus gives you double the colors in the color bucket, and more awesome pro features!

[Learn more, Memberships starting at \\$2.50/m!](#)

**Follow me
on Twitter!**

@ConvertingColor