

# Converting Colors

YIQ(134.7270, 59.5500, 44.1420)

Have a look what the booklet for  
YIQ(134.7270, 59.5500, 44.1420)  
contains.

<b>YIQ(134.7270, 59.5500, 44.1420)</b> .....	3
<b><i>Conversions</i></b> .....	4
<b><i>Details</i></b> .....	6
<b><i>Harmonies</i></b> .....	12
<b><i>Previews</i></b> .....	24
<b><i>Color Blindness Simulation</i></b> .....	28
<b><i>CSS Examples</i></b> .....	31

# Color

**YIQ(134.7270, 59.5500,  
44.1420)**

# Conversions

## Conversions Part 1

<b>Format</b>	<b>Color</b>
Hex	DB5A90
RGB	219, 90, 144
RGB Percent	86%, 35%, 56%
CMY	0.1408, 0.6472, 0.4351
CMYK	0.00, 0.59, 0.34, 0.14
HSL	335°, 64%, 61%
HSV	335°, 59%, 86%
XYZ	37.9290, 24.3919, 29.1145
YIQ	134.7270, 59.5500, 44.1420

# Conversions

## Conversions Part 2

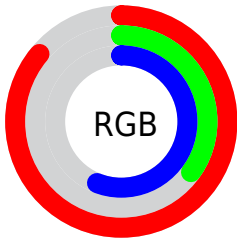
Format	Color
R <sub>YB</sub>	219, 90, 144
Decimal	14375568
CIE Lab	56.48, 55.71, -3.89
CIE LCh	56, 55.843, 356.009
Yxy	24.3919, 0.4148, 0.2668
Android (android.graphics.Color)	4292565648 (0xFFDB5A90)
YUV	134.7270, 4.5716, 73.9074
Hunter-Lab	49.3881, 50.6548, -0.3799

# Details

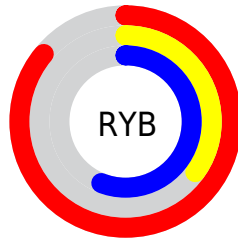
The YIQ color **134.7270, 59.5500, 44.1420** is a light color, and the websafe version is hex **CC6699**. The color can be described as light muted rose. A complement of this color would be **174.2730, -59.5500, -44.1420**, and the grayscale version is **135.0000, -0.0000, -0.0000**.

A 20% lighter version of the original color is **183.9320, 48.5470, 39.8030**, and **76.7530, 56.6610, 46.9410** is the 20% darker color. If you saturate the color by 10%, you get **120.3310, 69.7730, 51.6050**, and if you desaturate by 10%, it is **149.1230, 49.3270, 36.6790**.

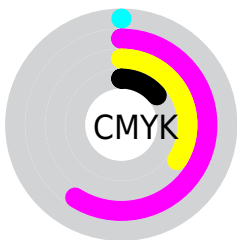
# Distribution



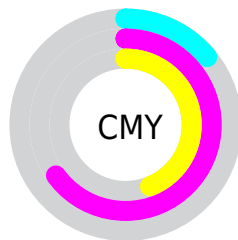
- Red (86%)
- Green (35%)
- Blue (56%)



- Red (86%)
- Yellow (35%)
- Blue (56%)



- Cyan (0%)
- Magenta (59%)
- Yellow (34%)
- Black (14%)



- Cyan (14%)
- Magenta (65%)
- Yellow (44%)

# Brightness & Saturation Gradients

These gradients show how the YIQ color 134.7270, 59.5500, 44.1420 changes by changing the brightness by 10 percent. The first figure shows a shift by +10% for each color and the second figure -10%.

Similar to the brightness gradients but the following saturation gradients show a change of the YIQ color 134.7270, 59.5500, 44.1420 by changing the saturation by 10% instead.



134.7270, 59.5500,  
44.1420

134.7270, 59.5500,  
44.1420

255.0000, -0.0000,  
-0.0000

106.3570, 57.7160,  
44.3400

183.9320, 48.5470,  
39.8030

76.7530, 56.6610,  
46.9410

203.5600, 31.8590,  
33.8670

47.4480, 56.2020,  
49.7540

223.7750, 14.8960,  
27.4080

36.2690, 45.9800,  
36.7640

240.9120, 6.6000,  
12.5520

25.5030, 36.0330,  
24.2970

15.1780, 29.1580,  
11.2220

0.0000, 0.0000,

0.0000

■ 134.7270, 59.5500,  
44.1420

■ 134.7270, 59.5500,  
44.1420

■ 120.3310, 69.7730,  
51.6050

■ 149.1230, 49.3270,  
36.6790

■ 106.0490, 79.6750,  
59.3790

■ 163.5190, 39.1040,  
29.2160

■ 91.6530, 89.8980,  
66.8420

■ 177.8010, 29.2020,  
21.4420

■ 77.2570, 100.1210,  
74.3050

■ 192.1970, 18.9790,  
13.9790

■ 75.9690, 100.9920,  
75.0400

■ 206.0060, 9.0310,  
7.0390

■ 220.2880, -0.8710,  
-0.7350

■ 234.6840,  
-11.0940, -8.1980

■ 243.2100,  
-18.5670, -10.4310

■ 244.2360,  
-21.4560, -7.6320

# Harmonies

## Analogous

The Analogous color harmony consists of three colors that are next to each other on the color wheel.



138.9200, 22.4580, 44.5540



134.7270, 59.5500, 44.1420



132.5000, 75.6460, 27.7580

# Triad

The Triadic color harmony groups three colors that are evenly spaced from another and form a triangle on the color wheel.



134.7270, 59.5500, 44.1420



125.1420, 18.5300, -38.4780



114.9080, -111.3650, -13.6770

# Complementary

The Complementary color scheme is a pair of colors which are on the opposite of each other on the color wheel.



134.7270, 59.5500, 44.1420



174.2730, -59.5500, -44.1420

# Split Complementary

Split-complementary colors differ from the complementary color scheme. The scheme consists of three colors, the original color and two neighbors of the complement color.



112.9240, -100.2670, -27.5870



134.7270, 59.5500, 44.1420



114.5390, -36.9920, -45.4720

# Square

The Square scheme is like the rectangle color scheme, but the four colors are evenly spaced on the color wheel.



134.7270, 59.5500, 44.1420



129.7230, 53.9230, -24.6130



107.2240, -84.2170, -43.1370



110.5030, -114.1180, -2.3260



# Rectangle

The Rectangle color scheme consists of four colors that form a rectangle on the color wheel.



134.7270, 59.5500, 44.1420



132.3620, 75.3740, 10.6540



107.2240, -84.2170, -43.1370



114.8280, -108.3840, -18.1440

# Sweetspot

The Sweet Spot groups the original color and five complimentary colors.



134.7270, 59.5500, 44.1420



224.9200, 21.3170, 15.6610



126.5330, 2.0990, 55.5950



109.0390, 13.4320, 9.8800



0.0000, 0.0000, 0.0000



128.0000, -0.0000, -0.0000



# Same Dimension

The Same Dimension uses a secret algorithm to generate beautiful new colors.



134.7270, 59.5500, 44.1420



136.7830, 83.4800, 62.0080



133.8540, 74.4090, 22.6410



102.7450, 5.2720, 3.5760



60.0490, 79.6750, 59.3790



15.9200, 21.3170, 15.6610



# Inverse Universe

The Inverse Universe completely reimagines the original color for something new.



134.7270, 59.5500, 44.1420



136.7830, 83.4800, 62.0080



175.1460, -74.4090, -22.6410



102.7450, 5.2720, 3.5760



60.0490, 79.6750, 59.3790



15.9200, 21.3170, 15.6610



# Previews

## White Background



This preview shows how the YIQ color 134.7270, 59.5500, 44.1420 looks on a white background.

## Color Contrast Check

Large Text (above 18pt) WCAG AA ✓ Pass

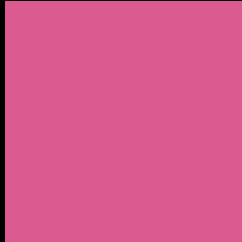
Any Text WCAG AA × Fail

Large Text (above 18pt) WCAG AAA × Fail

Any Text WCAG AAA × Fail



# Black Background



This preview shows how the YIQ color 134.7270, 59.5500, 44.1420 looks on a black background.

## Color Contrast Check

Large Text (above 18pt) WCAG AA ✓ Pass

Any Text WCAG AA ✓ Pass

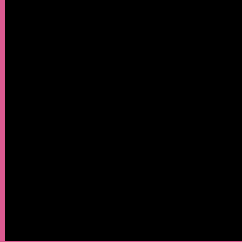
Large Text (above 18pt) WCAG AAA ✓ Pass

Any Text WCAG AAA × Fail

If you want to check with other color combinations, try the [Color Contrast Checker](#).

# YIQ 134.7270, 59.5500, 44.1420

## Background



This preview shows how black text looks on a background with the YIQ color 134.7270, 59.5500, 44.1420.



This preview shows how white text looks on a background with the YIQ color 134.7270, 59.5500,



# Color Blindness Simulation

Color vision deficiency is a very complex topic, and I could not describe the different causes any better than Wikipedia does, so if you want to learn more, you should check out their [article about color blindness](#).

## Dichromacy



### Original Color

134.7270, 59.5500, 44.1420

### Protanopia

136.6410, -17.5620, 9.9100

### Deuteranopia

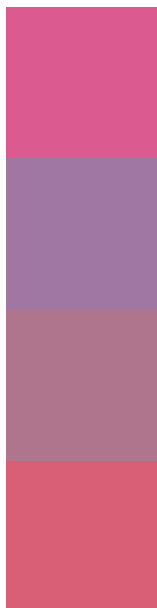
137.4680, 7.6100, 5.2580



## Tritanopia

134.0800, 68.0810, 27.1930

# Trichromacy



## Original Color

134.7270, 59.5500, 44.1420

## Protanomaly

136.1610, 10.6330, 22.0650

## Deuteranomaly

136.6650, 26.5890, 19.2370

## Tritanomaly

134.2140, 65.0080, 33.3280

# Monochromacy



## Original Color

134.7270, 59.5500, 44.1420

## Achromatopsia

135.0000, -0.0000, -0.0000

## Achromatomaly

135.2190, 21.9130, 15.8730

# CSS Examples

## Text

The CSS property to change the color of the text to YIQ 134.7270, 59.5500, 44.1420 is called "color". The color property can be set on classes, ids or directly on the HTML element.

This example shows how text in the color `rgb(219, 90, 144)` looks like.

```
.text, #text, p{  
    color:rgb(219, 90, 144)  
}
```

If you want to add a text shadow in that color use the text-shadow property, you can generate a text shadow directly with our [CSS Text Shadow Generator](#).

Here you see how black text with a 4 pixel rgb(219, 90, 144) colored shadow looks like.

```
.shadow{ text-shadow: 4px 4px 2px rgb(219, 90, 144) }
```

## Border

The CSS property to change the border of an element to YIQ 134.7270, 59.5500, 44.1420 is called "border". The border property can be set on classes, ids or directly on the HTML element.

This example shows the color as border, it can be applied via the CSS property "border" or "border-color".

```
.border, #border, table{ border:4px solid rgb(219, 90, 144) }
```



If only the border color should be changed use the property `border-color`.

```
.border{ border-color:rgb(219, 90, 144) }
```

If you want to add a box shadow in that color use:

Here you see how a box with a 4 pixel `rgb(219, 90, 144)` colored shadow looks like.

```
.boxshadow{ -moz-box-shadow:4px 4px 4px  
4px rgb(219, 90, 144); -webkit-box-  
shadow:4px 4px 4px 4px rgb(219, 90, 144);  
box-shadow:4px 4px 4px 4px rgb(219, 90,  
144) }
```

# Background

The CSS property to change the background color of an element to YIQ 134.7270, 59.5500, 44.1420 is called "background". The background property can be set on classes, ids or directly on the HTML element.

```
.background, #background, body{  
background: rgb(219, 90, 144) }
```

If only the background color should be changed can be used:

```
.background{ background-color: rgb(219, 90,  
144) }
```

This example shows the color as background, it is applied via the CSS property "background".

To optimize and compress your CSS code, you can use our [online CSS compressor and optimizer](#) based on csstidy. If you want to create a linear or radial gradient as background or border, check our [CSS Gradient Generator](#).

Hey! You found this booklet interesting? Support Converting Colors with the new Membership Option!

The pro membership hides all ads, plus gives you double the colors in the color bucket, and more awesome pro features!

**[Learn more, Memberships starting at \\$2.50/m!](#)**

**Follow me  
on Twitter!**

@ConvertingColor