

Converting Colors

YIQ(134.9680, 29.3890, 1.5250)

Have a look what the booklet for
YIQ(134.9680, 29.3890, 1.5250)
contains.

YIQ(134.9680, 29.3890, 1.5250)	3
<i>Conversions</i>	4
<i>Details</i>	6
<i>Harmonies</i>	12
<i>Previews</i>	24
<i>Color Blindness Simulation</i>	28
<i>CSS Examples</i>	31

Color

**YIQ(134.9680, 29.3890,
1.5250)**

Conversions

Conversions Part 1

Format	Color
Hex	A47E69
RGB	164, 126, 105
RGB Percent	64%, 49%, 41%
CMY	0.3568, 0.5059, 0.5881
CMYK	0.00, 0.23, 0.36, 0.36
HSL	21°, 24%, 53%
HSV	21°, 36%, 64%
XYZ	25.3243, 23.8328, 16.6392
YIQ	134.9680, 29.3890, 1.5250

Conversions

Conversions Part 2

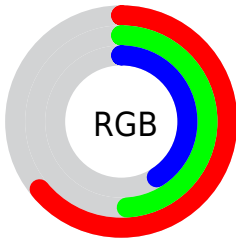
Format	Color
RYB	164, 138, 105
Decimal	10780265
CIELab	55.92, 11.74, 17.07
CIElCh	56, 20.719, 55.490
Yxy	23.8328, 0.3849, 0.3622
Android (android.graphics.Color)	4288970345 (0xFFA47E69)
YUV	134.9680, -14.7742, 25.4611
Hunter-Lab	48.8189, 7.1619, 13.9651

Details

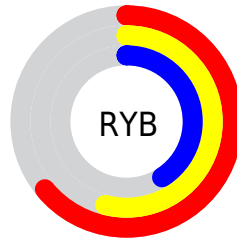
The YIQ color **134.9680, 29.3890, 1.5250** is a dark color, and the websafe version is hex **996666**. A complement of this color would be **134.0320, -29.3890, -1.5250**, and the grayscale version is **135.0000, -0.0000, -0.0000**.

A 20% lighter version of the original color is **188.6370, 31.8190, 1.5390**, and **85.0000, 26.3630, 1.2990** is the 20% darker color. If you saturate the color by 10%, you get **126.6870, 37.5500, 2.3020**, and if you desaturate by 10%, it is **143.2490, 21.2280, 0.7480**.

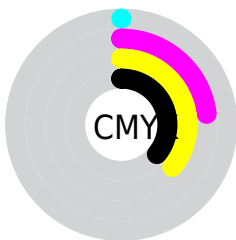
Distribution



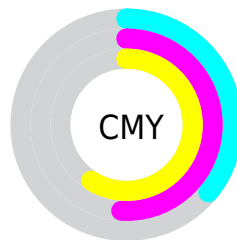
- Red (64%)
- Green (49%)
- Blue (41%)



- Red (64%)
- Yellow (54%)
- Blue (41%)



- Cyan (0%)
- Magenta (23%)
- Yellow (36%)
- Black (36%)



- Cyan (36%)
- Magenta (51%)
- Yellow (59%)

Brightness & Saturation Gradients

These gradients show how the YIQ color 134.9680, 29.3890, 1.5250 changes by changing the brightness by 10 percent. The first figure shows a shift by +10% for each color and the second figure -10%.

Similar to the brightness gradients but the following saturation gradients show a change of the YIQ color 134.9680, 29.3890, 1.5250 by changing the saturation by 10% instead.

■ 134.9680, 29.3890,
1.5250

■ 134.9680, 29.3890,
1.5250

■ 255.0000, -0.0000,
-0.0000

■ 109.4840, 27.8760,
1.4120

■ 188.6370, 31.8190,
1.5390

■ 85.0000, 26.3630,
1.2990

■ 216.2350, 33.0110,
1.9630

■ 61.2170, 24.2540,
0.9740

■ 237.6570, 19.8990,
-2.7010

■ 39.3200, 22.4660,
0.3380

■ 253.1760, 5.1360,
-4.9760

■ 17.8190, 19.6230,
2.3030

■ 0.0000, 0.0000,
0.0000

■ 134.9680, 29.3890,
1.5250

■ 134.9680, 29.3890,
1.5250

■ 126.6870, 37.5500,
2.3020

■ 143.2490, 21.2280,
0.7480

■ 118.8790, 45.7570,
2.2450

■ 151.0570, 13.0210,
0.8050

■ 110.5980, 53.9180,
3.0220

■ 159.3380, 4.8600,
0.0280

■ 102.7900, 62.1250,
2.9650

■ 167.1460, -3.3470,
0.0850

■ 94.5090, 70.2860,
3.7420

■ 175.4270,
-11.5080, -0.6920

■ 86.8150, 78.1720,
3.9960

■ 183.1210,
-19.3940, -0.9460

■ 83.0820, 81.7940,
4.4340

■ 191.5160,
-27.8760, -1.4120

■ 199.7970,

-36.0370, -2.1890

■ 207.6050,
-44.2440, -2.1320

Harmonies

Analogous

The Analogous color harmony consists of three colors that are next to each other on the color wheel.



136.3090, 30.1670, 9.4550



134.9680, 29.3890, 1.5250



133.5060, 21.6420, -6.7580

Triad

The Triadic color harmony groups three colors that are evenly spaced from another and form a triangle on the color wheel.



134.9680, 29.3890, 1.5250



126.9700, -26.8190, -15.0670



135.0010, -9.7680, 11.8320

Complementary

The Complementary color scheme is a pair of colors which are on the opposite of each other on the color wheel.



134.9680, 29.3890, 1.5250



134.0320, -29.3890, -1.5250

Split Complementary

Split-complementary colors differ from the complementary color scheme. The scheme consists of three colors, the original color and two neighbors of the complement color.



131.3900, -27.2810, 4.3270



134.9680, 29.3890, 1.5250



126.0320, -38.5570, -11.5890

Square

The Square scheme is like the rectangle color scheme, but the four colors are evenly spaced on the color wheel.



134.9680, 29.3890, 1.5250



129.1260, -9.7630, -15.8030



127.6610, -38.6500, -4.3940



137.3900, 8.2500, 15.6900

Rectangle

The Rectangle color scheme consists of four colors that form a rectangle on the color wheel.



134.9680, 29.3890, 1.5250



132.3800, 13.0690, -11.0830



127.6610, -38.6500, -4.3940



134.0110, -15.7280, 9.7120

Sweetspot

The Sweet Spot groups the original color and five complimentary colors.



134.9680, 29.3890, 1.5250



202.5730, 11.5080, 0.6920



126.9730, 22.9660, 24.3260



100.1210, 6.9690, 0.3530



235.0000, 0.0000, -0.0000



107.0000, -0.0000, 0.0000

Same Dimension

The Same Dimension uses a secret algorithm to generate beautiful new colors.



134.9680, 29.3890, 1.5250



168.8790, 45.7570, 2.2450



151.9910, 21.4140, -13.6420



77.4520, 4.5390, 0.3390



73.8790, 72.1200, 3.5440



8.9040, 9.0780, 0.6780

Inverse Universe

The Inverse Universe completely reimagines the original color for something new.



134.0320, -29.3890, -1.5250



167.1210, -45.7570, -2.2450



117.0090, -21.4140, 13.6420



77.5480, -4.5390, -0.3390



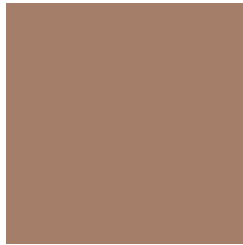
71.7080, -72.3950, -4.0670



9.0960, -9.0780, -0.6780

Previews

White Background



This preview shows how the YIQ color 134.9680, 29.3890, 1.5250 looks on a white background.

Color Contrast Check

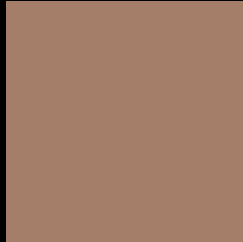
Large Text (above 18pt) WCAG AA ✓ Pass

Any Text WCAG AA × Fail

Large Text (above 18pt) WCAG AAA × Fail

Any Text WCAG AAA × Fail

Black Background



This preview shows how the YIQ color 134.9680, 29.3890, 1.5250 looks on a black background.

Color Contrast Check

Large Text (above 18pt) WCAG AA ✓ Pass

Any Text WCAG AA ✓ Pass

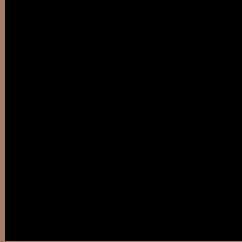
Large Text (above 18pt) WCAG AAA ✓ Pass

Any Text WCAG AAA × Fail

If you want to check with other color combinations, try the [Color Contrast Checker](#).

YIQ 134.9680, 29.3890, 1.5250

Background



This preview shows how black text looks on a background with the YIQ color 134.9680, 29.3890, 1.5250.



This preview shows how white text looks on a background with the YIQ color 134.9680, 29.3890,

1.5250.

Color Blindness Simulation

Color vision deficiency is a very complex topic, and I could not describe the different causes any better than Wikipedia does, so if you want to learn more, you should check out their [article about color blindness](#).

Dichromacy



Original Color

134.9680, 29.3890, 1.5250

Protanopia

133.5420, 12.7930, -6.0790

Deuteranopia

134.5220, 24.7130, -1.8390



Tritanopia

136.5950, 23.6100, 12.6500

Trichromacy



Original Color

134.9680, 29.3890, 1.5250

Protanomaly

134.0590, 18.7070, -3.1250

Deuteranomaly

134.8320, 26.7760, -0.6800

Tritanomaly

135.7430, 25.9490, 8.8050

Monochromacy



Original Color

134.9680, 29.3890, 1.5250

Achromatopsia

135.0000, -0.0000, -0.0000

Achromatomaly

135.2740, 10.9120, 0.4800

CSS Examples

Text

The CSS property to change the color of the text to YIQ 134.9680, 29.3890, 1.5250 is called "color". The color property can be set on classes, ids or directly on the HTML element.

This example shows how text in the color `rgb(164, 126, 105)` looks like.

```
.text, #text, p{  
    color:rgb(164, 126, 105)  
}
```

If you want to add a text shadow in that color use the text-shadow property, you can generate a text shadow directly with our [CSS Text Shadow Generator](#).

Here you see how black text with a 4 pixel rgb(164, 126, 105) colored shadow looks like.

```
.shadow{ text-shadow: 4px 4px 2px rgb(164, 126, 105) }
```

Border

The CSS property to change the border of an element to YIQ 134.9680, 29.3890, 1.5250 is called "border". The border property can be set on classes, ids or directly on the HTML element.

This example shows the color as border, it can be applied via the CSS property "border" or "border-color".

```
.border, #border, table{ border:4px solid rgb(164, 126, 105) }
```


If only the border color should be changed use the property `border-color`.

```
.border{ border-color:rgb(164, 126, 105) }
```

If you want to add a box shadow in that color use:

Here you see how a box with a 4 pixel `rgb(164, 126, 105)` colored shadow looks like.

```
.boxshadow{ -moz-box-shadow:4px 4px 4px  
4px rgb(164, 126, 105); -webkit-box-  
shadow:4px 4px 4px 4px rgb(164, 126, 105);  
box-shadow:4px 4px 4px 4px rgb(164, 126,  
105) }
```

Background

The CSS property to change the background color of an element to YIQ 134.9680, 29.3890, 1.5250 is called "background". The background property can be set on classes, ids or directly on the HTML element.

```
.background, #background, body{  
background: rgb(164, 126, 105) }
```

If only the background color should be changed can be used:

```
.background{ background-color: rgb(164,  
126, 105) }
```

This example shows the color as background, it is applied via the CSS property "background".

To optimize and compress your CSS code, you can use our [online CSS compressor and optimizer](#) based on csstidy. If you want to create a linear or radial gradient as background or border, check our [CSS Gradient Generator](#).

Hey! You found this booklet interesting? Support Converting Colors with the new Membership Option!

The pro membership hides all ads, plus gives you double the colors in the color bucket, and more awesome pro features!

[Learn more, Memberships starting at \\$2.50/m!](#)

**Follow me
on Twitter!**

@ConvertingColor