

Converting Colors

YIQ(135.3960, 42.5030, -4.8650)

Have a look what the booklet for
YIQ(135.3960, 42.5030, -4.8650)
contains.

YIQ(135.3960, 42.5030, -4.8650)	3
<i>Conversions</i>	4
<i>Details</i>	6
<i>Harmonies</i>	12
<i>Previews</i>	24
<i>Color Blindness Simulation</i>	28
<i>CSS Examples</i>	31

Color

**YIQ(135.3960, 42.5030,
-4.8650)**

Conversions

Conversions Part 1

Format	Color
Hex	AD7F50
RGB	173, 127, 80
RGB Percent	68%, 50%, 31%
CMY	0.3215, 0.5020, 0.6861
CMYK	0.00, 0.27, 0.54, 0.32
HSL	30°, 37%, 50%
HSV	30°, 54%, 68%
XYZ	26.2749, 24.6402, 10.9708
YIQ	135.3960, 42.5030, -4.8650

Conversions

Conversions Part 2

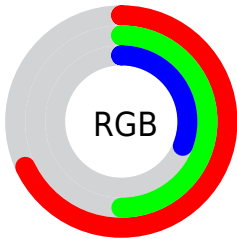
Format	Color
R_{YB}	171, 173, 80
Decimal	11370320
CIE Lab	56.72, 12.25, 32.32
CIE LCh	57, 34.564, 69.238
Yxy	24.6402, 0.4246, 0.3982
Android (android.graphics.Color)	4289560400 (0xFFAD7F50)
YUV	135.3960, -27.3102, 32.9787
Hunter-Lab	49.6389, 7.6154, 21.6435

Details

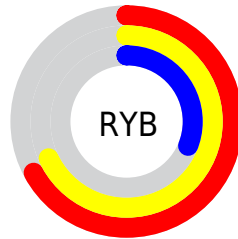
The YIQ color **135.3960, 42.5030, -4.8650** is a dark color, and the websafe version is hex **CC9966**. A complement of this color would be **117.6040, -42.5030, 4.8650**, and the grayscale version is **136.0000, -0.0000, 0.0000**.

A 20% lighter version of the original color is **189.5490, 46.4460, -4.7380**, and **84.8300, 38.2850, -5.5150** is the 20% darker color. If you saturate the color by 10%, you get **128.1750, 50.4350, -5.4450**, and if you desaturate by 10%, it is **142.6170, 34.5710, -4.2850**.

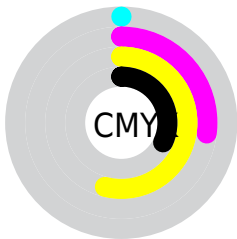
Distribution



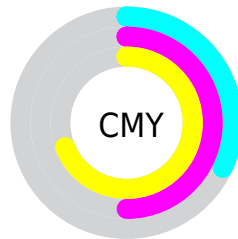
- Red (68%)
- Green (50%)
- Blue (31%)



- Red (67%)
- Yellow (68%)
- Blue (31%)



- Cyan (0%)
- Magenta (27%)
- Yellow (54%)
- Black (32%)



- Cyan (32%)
- Magenta (50%)
- Yellow (69%)

Brightness & Saturation Gradients

These gradients show how the YIQ color 135.3960, 42.5030, -4.8650 changes by changing the brightness by 10 percent. The first figure shows a shift by +10% for each color and the second figure -10%.

Similar to the brightness gradients but the following saturation gradients show a change of the YIQ color 135.3960, 42.5030, -4.8650 by changing the saturation by 10% instead.

■ 135.3960, 42.5030,
-4.8650

■ 135.3960, 42.5030,
-4.8650

■ 255.0000, -0.0000,
-0.0000

■ 109.6130, 40.3940,
-5.1900

■ 189.5490, 46.4460,
-4.7380

■ 84.8300, 38.2850,
-5.5150

■ 215.6520, 44.6580,
-5.3740

■ 60.6340, 35.9010,
-6.3630

■ 235.1660, 28.2910,
-11.6210

■ 39.1050, 30.2610,
-3.2670

■ 249.9840, 14.1240,
-13.6840

■ 19.5910, 20.2650,
1.6810

■ 253.2900, 4.8150,
-4.6650

■ 0.0000, 0.0000,
0.0000

■ 135.3960, 42.5030,
-4.8650

■ 135.3960, 42.5030,
-4.8650

■ 128.1750, 50.4350,
-5.4450

■ 142.6170, 34.5710,
-4.2850

■ 121.4270, 58.4130,
-6.8590

■ 149.3650, 26.5930,
-2.8710

■ 114.2060, 66.3450,
-7.4390

■ 156.5860, 18.6610,
-2.2910

■ 107.5720, 74.0020,
-8.5420

■ 163.2200, 11.0040,
-1.1880

■ 102.7960, 79.1830,
-8.8250

■ 170.5550, 2.7510,
-0.2970

■ 177.1890, -4.9060,
0.8060

■ 184.4100,
-12.8380, 1.3860

■ 191.6310,

-20.7700, 1.9660

■ 198.3790,
-28.7480, 3.3800

Harmonies

Analogous

The Analogous color harmony consists of three colors that are next to each other on the color wheel.



136.7750, 49.2860, 9.8780



135.3960, 42.5030, -4.8650



132.7370, 24.9450, -17.0630

Triad

The Triadic color harmony groups three colors that are evenly spaced from another and form a triangle on the color wheel.



135.3960, 42.5030, -4.8650



111.1360, -77.6170, -30.5850



139.3860, -3.1220, 23.5500

Complementary

The Complementary color scheme is a pair of colors which are on the opposite of each other on the color wheel.



135.3960, 42.5030, -4.8650



117.6040, -42.5030, 4.8650

Split Complementary

Split-complementary colors differ from the complementary color scheme. The scheme consists of three colors, the original color and two neighbors of the complement color.



134.0550, -36.2230, 12.2010



135.3960, 42.5030, -4.8650



107.7720, -96.7830, -24.6470

Square

The Square scheme is like the rectangle color scheme, but the four colors are evenly spaced on the color wheel.



135.3960, 42.5030, -4.8650



123.4710, -33.1440, -27.0960



121.0560, -73.4950, -6.1590



139.6360, 25.5330, 27.3650

Rectangle

The Rectangle color scheme consists of four colors that form a rectangle on the color wheel.



135.3960, 42.5030, -4.8650



130.6640, 8.8530, -22.7870



121.0560, -73.4950, -6.1590



138.5310, -13.8960, 20.5680

Sweetspot

The Sweet Spot groups the original color and five complimentary colors.



135.3960, 42.5030, -4.8650



209.9170, 16.2310, -2.3050



113.1650, 40.3410, 34.3330



103.7360, 9.4910, -1.3010



240.0000, -0.0000, -0.0000



112.0000, -0.0000, 0.0000

Same Dimension

The Same Dimension uses a secret algorithm to generate beautiful new colors.



135.3960, 42.5030, -4.8650



166.0210, 65.4280, -7.3400



162.3980, 29.8530, -28.9230



83.0390, 4.2640, -0.1840



89.4620, 68.5000, -7.9480



13.9210, 10.4080, -1.4000

Inverse Universe

The Inverse Universe completely reimagines the original color for something new.



117.6040, -42.5030, 4.8650



138.9790, -65.4280, 7.3400



90.6020, -29.8530, 28.9230



81.3740, -3.9890, 0.7070



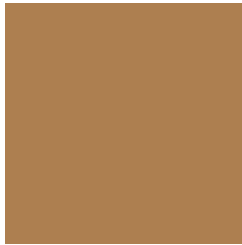
60.5380, -68.5000, 7.9480



9.0790, -10.4080, 1.4000

Previews

White Background



This preview shows how the YIQ color 135.3960, 42.5030, -4.8650 looks on a white background.

Color Contrast Check

Large Text (above 18pt) WCAG AA ✓ Pass

Any Text WCAG AA × Fail

Large Text (above 18pt) WCAG AAA × Fail

Any Text WCAG AAA × Fail

Black Background



This preview shows how the YIQ color 135.3960, 42.5030, -4.8650 looks on a black background.

Color Contrast Check

Large Text (above 18pt) WCAG AA ✓ Pass

Any Text WCAG AA ✓ Pass

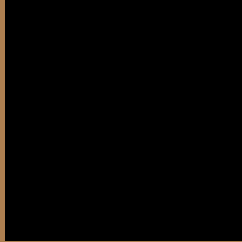
Large Text (above 18pt) WCAG AAA ✓ Pass

Any Text WCAG AAA × Fail

If you want to check with other color combinations, try the [Color Contrast Checker](#).

YIQ 135.3960, 42.5030, -4.8650

Background



This preview shows how black text looks on a background with the YIQ color 135.3960, 42.5030, -4.8650.



This preview shows how white text looks on a background with the YIQ color 135.3960, 42.5030,

-4.8650.

Color Blindness Simulation

Color vision deficiency is a very complex topic, and I could not describe the different causes any better than Wikipedia does, so if you want to learn more, you should check out their [article about color blindness](#).

Dichromacy



Original Color

135.3960, 42.5030, -4.8650

Protanopia

133.9590, 24.4400, -13.4160

Deuteranopia

134.9500, 37.8270, -8.2290



Tritanopia

138.7700, 30.4870, 14.6710

Trichromacy



Original Color

135.3960, 42.5030, -4.8650

Protanomaly

134.7750, 30.9500, -10.2500

Deuteranomaly

135.2600, 39.8900, -7.0700

Tritanomaly

137.5930, 35.1190, 7.8150

Monochromacy



Original Color

135.3960, 42.5030, -4.8650

Achromatopsia

135.0000, -0.0000, -0.0000

Achromatomaly

135.1450, 15.5890, -1.6830

CSS Examples

Text

The CSS property to change the color of the text to YIQ 135.3960, 42.5030, -4.8650 is called "color". The color property can be set on classes, ids or directly on the HTML element.

This example shows how text in the color `rgb(173, 127, 80)` looks like.

```
.text, #text, p{  
    color:rgb(173, 127, 80)  
}
```

If you want to add a text shadow in that color use the text-shadow property, you can generate a text shadow directly with our [CSS Text Shadow Generator](#).

Here you see how black text with a 4 pixel rgb(173, 127, 80) colored shadow looks like.

```
.shadow{ text-shadow: 4px 4px 2px rgb(173, 127, 80) }
```

Border

The CSS property to change the border of an element to YIQ 135.3960, 42.5030, -4.8650 is called "border". The border property can be set on classes, ids or directly on the HTML element.

This example shows the color as border, it can be applied via the CSS property "border" or "border-color".

```
.border, #border, table{ border:4px solid rgb(173, 127, 80) }
```


If only the border color should be changed use the property `border-color`.

```
.border{ border-color:rgb(173, 127, 80) }
```

If you want to add a box shadow in that color use:

Here you see how a box with a 4 pixel `rgb(173, 127, 80)` colored shadow looks like.

```
.boxshadow{ -moz-box-shadow:4px 4px 4px  
4px rgb(173, 127, 80); -webkit-box-  
shadow:4px 4px 4px 4px rgb(173, 127, 80);  
box-shadow:4px 4px 4px 4px rgb(173, 127,  
80) }
```

Background

The CSS property to change the background color of an element to YIQ 135.3960, 42.5030, -4.8650 is called "background". The background property can be set on classes, ids or directly on the HTML element.

```
.background, #background, body{  
background: rgb(173, 127, 80) }
```

If only the background color should be changed can be used:

```
.background{ background-color: rgb(173,  
127, 80) }
```

This example shows the color as background, it is applied via the CSS property "background".

To optimize and compress your CSS code, you can use our [online CSS compressor and optimizer](#) based on csstidy. If you want to create a linear or radial gradient as background or border, check our [CSS Gradient Generator](#).

Hey! You found this booklet interesting? Support Converting Colors with the new Membership Option!

The pro membership hides all ads, plus gives you double the colors in the color bucket, and more awesome pro features!

[Learn more, Memberships starting at \\$2.50/m!](#)

**Follow me
on Twitter!**

@ConvertingColor