

Converting Colors

YIQ(136.0700, 92.3770, 49.4410)

Have a look what the booklet for
YIQ(136.0700, 92.3770, 49.4410)
contains.

YIQ(136.0700, 92.3770, 49.4410)	3
<i>Conversions</i>	4
<i>Details</i>	6
<i>Harmonies</i>	12
<i>Previews</i>	24
<i>Color Blindness Simulation</i>	28
<i>CSS Examples</i>	31

Color

**YIQ(136.0700, 92.3770,
49.4410)**

Conversions

Conversions Part 1

Format	Color
Hex	FF4F76
RGB	255, 79, 118
RGB Percent	100%, 31%, 46%
CMY	0.0000, 0.6904, 0.5369
CMYK	0.00, 0.69, 0.54, 0.00
HSL	347°, 100%, 65%
HSV	347°, 69%, 100%
XYZ	47.3058, 28.1514, 20.1067
YIQ	136.0700, 92.3770, 49.4410

Conversions

Conversions Part 2

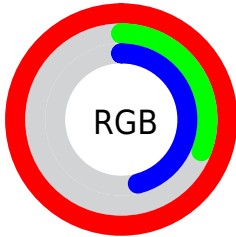
Format	Color
R_{YB}	255, 79, 118
Decimal	16732022
CIE _{Lab}	60.03, 68.55, 17.19
CIE _{LCh}	60, 70.670, 14.075
Yxy	28.1514, 0.4950, 0.2946
Android (android.graphics.Color)	4294922102 (0xFFFF4F76)
YUV	136.0700, -8.9085, 104.3016
Hunter-Lab	53.0579, 66.2973, 14.6720

Details

The YIQ color **136.0700, 92.3770, 49.4410** is a dark color, and the websafe version is hex **FF3366**. The color can be described as middle washed rose. A complement of this color would be **197.9300, -92.3770, -49.4410**, and the grayscale version is **136.0000, -0.0000, 0.0000**.

A 20% lighter version of the original color is **176.6310, 59.4600, 34.7560**, and **65.3880, 91.9620, 62.4740** is the 20% darker color. If you saturate the color by 10%, you get **118.5280, 105.9470, 56.8190**, and if you desaturate by 10%, it is **153.0250, 79.0820, 42.5860**.

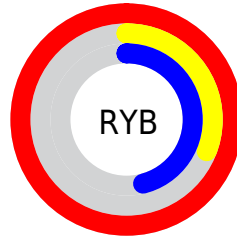
Distribution



Red (100%)

Green (31%)

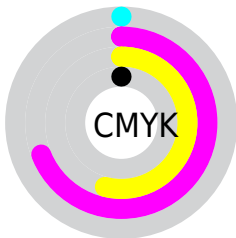
Blue (46%)



Red (100%)

Yellow (31%)

Blue (46%)

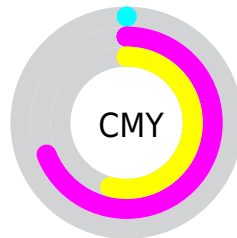


Cyan (0%)

Magenta (69%)

Yellow (54%)

Black (0%)



Cyan (0%)

Magenta (69%)

Yellow (54%)

Brightness & Saturation Gradients

These gradients show how the YIQ color 136.0700, 92.3770, 49.4410 changes by changing the brightness by 10 percent. The first figure shows a shift by +10% for each color and the second figure -10%.

Similar to the brightness gradients but the following saturation gradients show a change of the YIQ color 136.0700, 92.3770, 49.4410 by changing the saturation by 10% instead.

136.0700, 92.3770,
49.4410

136.0700, 92.3770,
49.4410

255.0000, -0.0000,
-0.0000

103.8080, 90.3590,
52.9750

176.6310, 59.4600,
34.7560

65.3880, 91.9620,
62.4740

196.7320, 42.8180,
27.9860

53.6110, 80.5480,
49.0600

217.5340, 25.5800,
21.0040

42.0620, 68.4920,
36.2680

237.8630, 8.2960,
14.8560

30.0140, 59.2790,
21.5110

21.9840, 41.6280,
16.5080

11.7750, 22.9230,

8.5790

■ 0.0000, 0.0000,
0.0000

■ 136.0700, 92.3770,
49.4410

■ 136.0700, 92.3770,
49.4410

■ 118.5280,
105.9470, 56.8190

■ 153.0250, 79.0820,
42.5860

■ 101.5730,
119.2420, 63.6740

■ 170.5670, 65.5120,
35.2080

■ 84.1450, 132.4910,
71.3630

■ 187.5220, 52.2170,
28.3530

■ 82.7430, 133.6830,
71.7870

■ 204.9500, 38.9680,
20.6640

■ 221.9050, 25.6730,
13.8090

239.4470, 12.1030,
6.4310

255.0000, -0.0000,
-0.0000

Harmonies

Analogous

The Analogous color harmony consists of three colors that are next to each other on the color wheel.



141.8760, 61.2890, 62.1930



136.0700, 92.3770, 49.4410



138.1750, 95.1340, 15.9820

Triad

The Triadic color harmony groups three colors that are evenly spaced from another and form a triangle on the color wheel.



136.0700, 92.3770, 49.4410



122.9260, -16.6330, -56.5130



123.5770, -126.1300, -4.8980

Complementary

The Complementary color scheme is a pair of colors which are on the opposite of each other on the color wheel.



136.0700, 92.3770, 49.4410



197.9300, -92.3770, -49.4410

Split Complementary

Split-complementary colors differ from the complementary color scheme. The scheme consists of three colors, the original color and two neighbors of the complement color.



126.5970, -120.8550, -17.9030



136.0700, 92.3770, 49.4410



112.6890, -81.6930, -55.8450

Square

The Square scheme is like the rectangle color scheme, but the four colors are evenly spaced on the color wheel.



136.0700, 92.3770, 49.4410



132.2910, 45.4910, -48.0210



121.2730, -103.1080, -36.6760



128.8690, -88.1250, 16.6990

Rectangle

The Rectangle color scheme consists of four colors that form a rectangle on the color wheel.



136.0700, 92.3770, 49.4410



137.4780, 88.7660, -11.7940



121.2730, -103.1080, -36.6760



125.9250, -127.2300, -6.9900

Sweetspot

The Sweet Spot groups the original color and five complimentary colors.



136.0700, 92.3770, 49.4410



218.5140, 28.3320, 15.1800



139.4290, 23.9640, 83.3560



106.3660, 16.8250, 8.9610



0.0000, 0.0000, 0.0000



128.0000, -0.0000, -0.0000

Same Dimension

The Same Dimension uses a secret algorithm to generate beautiful new colors.



136.0700, 92.3770, 49.4410



111.7460, 111.2650, 59.5610



159.2130, 91.9710, 12.7310



119.2290, 6.7850, 3.6890



62.0110, 100.0330, 53.8650



20.7320, 33.6500, 17.9220

Inverse Universe

The Inverse Universe completely reimagines the original color for something new.



136.0700, 92.3770, 49.4410



111.7460, 111.2650, 59.5610



174.7870, -91.9710, -12.7310



119.2290, 6.7850, 3.6890



62.0110, 100.0330, 53.8650



20.7320, 33.6500, 17.9220

Previews

White Background



This preview shows how the YIQ color 136.0700, 92.3770, 49.4410 looks on a white background.

Color Contrast Check

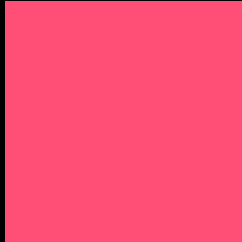
Large Text (above 18pt) WCAG AA ✓ Pass

Any Text WCAG AA × Fail

Large Text (above 18pt) WCAG AAA × Fail

Any Text WCAG AAA × Fail

Black Background



This preview shows how the YIQ color 136.0700, 92.3770, 49.4410 looks on a black background.

Color Contrast Check

Large Text (above 18pt) WCAG AA ✓ Pass

Any Text WCAG AA ✓ Pass

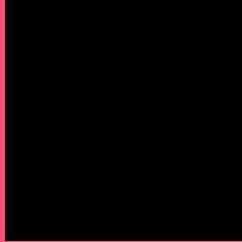
Large Text (above 18pt) WCAG AAA ✓ Pass

Any Text WCAG AAA × Fail

If you want to check with other color combinations, try the [Color Contrast Checker](#).

YIQ 136.0700, 92.3770, 49.4410

Background



This preview shows how black text looks on a background with the YIQ color 136.0700, 92.3770, 49.4410.

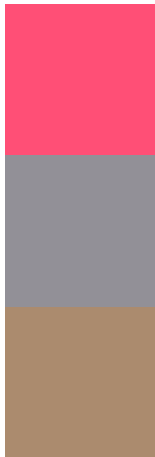


This preview shows how white text looks on a background with the YIQ color 136.0700, 92.3770,

Color Blindness Simulation

Color vision deficiency is a very complex topic, and I could not describe the different causes any better than Wikipedia does, so if you want to learn more, you should check out their [article about color blindness](#).

Dichromacy



Original Color

136.0700, 92.3770, 49.4410

Protanopia

145.3960, -1.0550, 2.6010

Deuteranopia

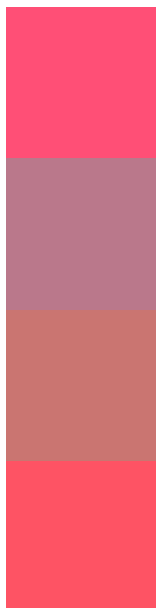
145.2620, 28.3810, -2.2350



Tritanopia

135.6880, 98.8440, 36.8600

Trichromacy



Original Color

136.0700, 92.3770, 49.4410

Protanomaly

141.9000, 33.2370, 19.9010

Deuteranomaly

141.9590, 51.9440, 16.7760

Tritanomaly

136.0670, 96.4590, 41.5390

Monochromacy



Original Color

136.0700, 92.3770, 49.4410

Achromatopsia

136.0000, -0.0000, 0.0000

Achromatomaly

135.7320, 33.6500, 17.9220

CSS Examples

Text

The CSS property to change the color of the text to YIQ 136.0700, 92.3770, 49.4410 is called "color". The color property can be set on classes, ids or directly on the HTML element.

This example shows how text in the color `rgb(255, 79, 118)` looks like.

```
.text, #text, p{  
    color:rgb(255, 79, 118)  
}
```

If you want to add a text shadow in that color use the text-shadow property, you can generate a text shadow directly with our [CSS Text Shadow Generator](#).

Here you see how black text with a 4 pixel rgb(255, 79, 118) colored shadow looks like.

```
.shadow{ text-shadow: 4px 4px 2px rgb(255, 79, 118) }
```

Border

The CSS property to change the border of an element to YIQ 136.0700, 92.3770, 49.4410 is called "border". The border property can be set on classes, ids or directly on the HTML element.

This example shows the color as border, it can be applied via the CSS property "border" or "border-color".

```
.border, #border, table{ border:4px solid rgb(255, 79, 118) }
```


If only the border color should be changed use the property `border-color`.

```
.border{ border-color:rgb(255, 79, 118) }
```

If you want to add a box shadow in that color use:

Here you see how a box with a 4 pixel `rgb(255, 79, 118)` colored shadow looks like.

```
.boxshadow{ -moz-box-shadow:4px 4px 4px  
4px rgb(255, 79, 118); -webkit-box-  
shadow:4px 4px 4px 4px rgb(255, 79, 118);  
box-shadow:4px 4px 4px 4px rgb(255, 79,  
118) }
```

Background

The CSS property to change the background color of an element to YIQ 136.0700, 92.3770, 49.4410 is called "background". The background property can be set on classes, ids or directly on the HTML element.

```
.background, #background, body{  
background: rgb(255, 79, 118) }
```

If only the background color should be changed can be used:

```
.background{ background-color: rgb(255, 79,  
118) }
```

This example shows the color as background, it is applied via the CSS property "background".

To optimize and compress your CSS code, you can use our [online CSS compressor and optimizer](#) based on csstidy. If you want to create a linear or radial gradient as background or border, check our [CSS Gradient Generator](#).

Hey! You found this booklet interesting? Support Converting Colors with the new Membership Option!

The pro membership hides all ads, plus gives you double the colors in the color bucket, and more awesome pro features!

[Learn more, Memberships starting at \\$2.50/m!](#)

**Follow me
on Twitter!**

@ConvertingColor